

2004 TRANSPORTATION BOND PROGRAM

PRECINCT 3 – Bobbie Mitchell

State Projects:

- 1.) IH 35E
- 2.) FM 1171

Local Projects:

- 1.) Spinks Road (Flower Mound)
- 2.) Garden Ridge Boulevard (Flower Mound)
- 3.) Dixon Lane
- 4.) Garden Ridge Boulevard (Lewisville)
- 5.) Spinks Road (Lewisville)
- 6.) Valley Ridge Boulevard
- 7.) Discretionary

IH 35E Corridor Improvements

Limits from: President George Bush Turnpike
Limits to: Just North of FM 407
Length: 11.7 miles
CSJ: 0196-02-068; 0196-02-073
Prc: 1, 2, and 3
City/Town: Carrollton, Dallas, Lewisville, Highland Village

Bond Program Project Type: Regionally Significant/Multi-Jurisdictional
 Congestion/Air Quality
 Safety

Project Cost: \$410,400,000

Description:

Widen existing 6 lane facility to 8 lane facility with an additional HOV/ Managed Lane facility in the center.

Partnership Potential:

The following is a potential break down of the cost participation on IH-35E Corridor. A portion of TxDOT's participation could be offset by the revenue generated by the managed lanes. Additionally, COG participation requires action by the Regional Transportation Council (RTC). That action would take place subsequent to the election on the 2004 County Bond Program.

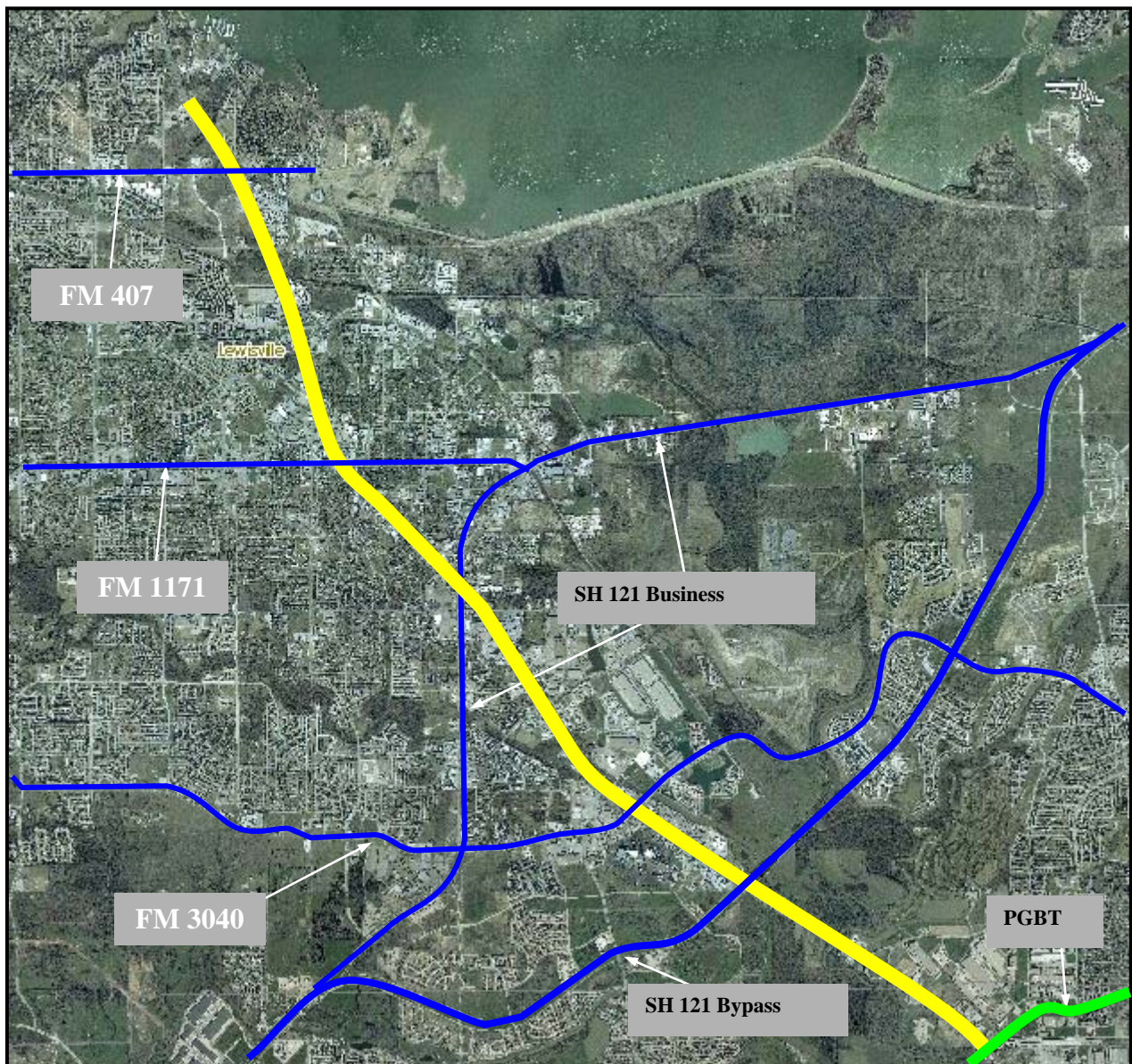
Description	Denton County	TxDOT	COG	Others
Design, Right-of-way Acquisition; and Construction	\$40,000,000 from County Judge Mary Horn; \$2,000,000 from Com. White; \$2,000,000 from Com. Jacobs; \$15,000,000 from Com. Mitchell	\$30,000,000 from reprogramming existing projects; \$100,000,000 from revenue generated by Managed Lanes; \$172,200,000	\$1,200,000 from reprogramming existing projects; \$40,000,000 in potential partnership	\$8,000,000 from City of Lewisville Bond program

Notes:

The Major Investment Study (MIS) for IH-35E has been completed. TxDOT is currently working on the environmental assessment (EA) and controlled schematic. Traffic projections for 2025 along this corridor on the main lanes range from 180,000 average daily traffic (ADT) just north of FM 407 to over 300,000 ADT between the PGBT and SH 121. The managed facility will allow HOV traffic and single occupant (SOV) traffic. The SOV traffic will be charged a toll based upon the time of day and level of congestion. The HOV traffic may or may not be tolled. Current revenue projections indicate that the managed lanes of IH-35E would generate \$10,000,000 in revenue each year. That would support an additional \$100,000,000 in state bonding authority.

IH-35E CORRIDOR IMPROVEMENTS

FROM JUST NORTH OF FM 407 TO PRESIDENT GEORGE BUSH TURNPIKE



FM 1171

Limits from: FM 2499
Limits to: IH-35W
Length: 11.0 miles
CSJ: 1311-01-031, 1311-01-034, 1311-01-035,
and 1311-01-038
Prct: 3 and 4
City/Town: Flower Mound, North Lake,
Unincorporated Denton County

Bond Program Project Type: Regionally Significant/Multi-Jurisdictional
Congestion/Air Quality
Safety
Economic Development

Project Cost: \$45,000,000

Description:

Widen the existing 2-lane farm to market road to a 6-lane divided urban roadway. Some portions of FM 1171 are to be rehabilitated and widened before the overall widening FM 1171 is complete.

Partnership Potential:

The following is a potential break down of the cost participation on FM 1171.

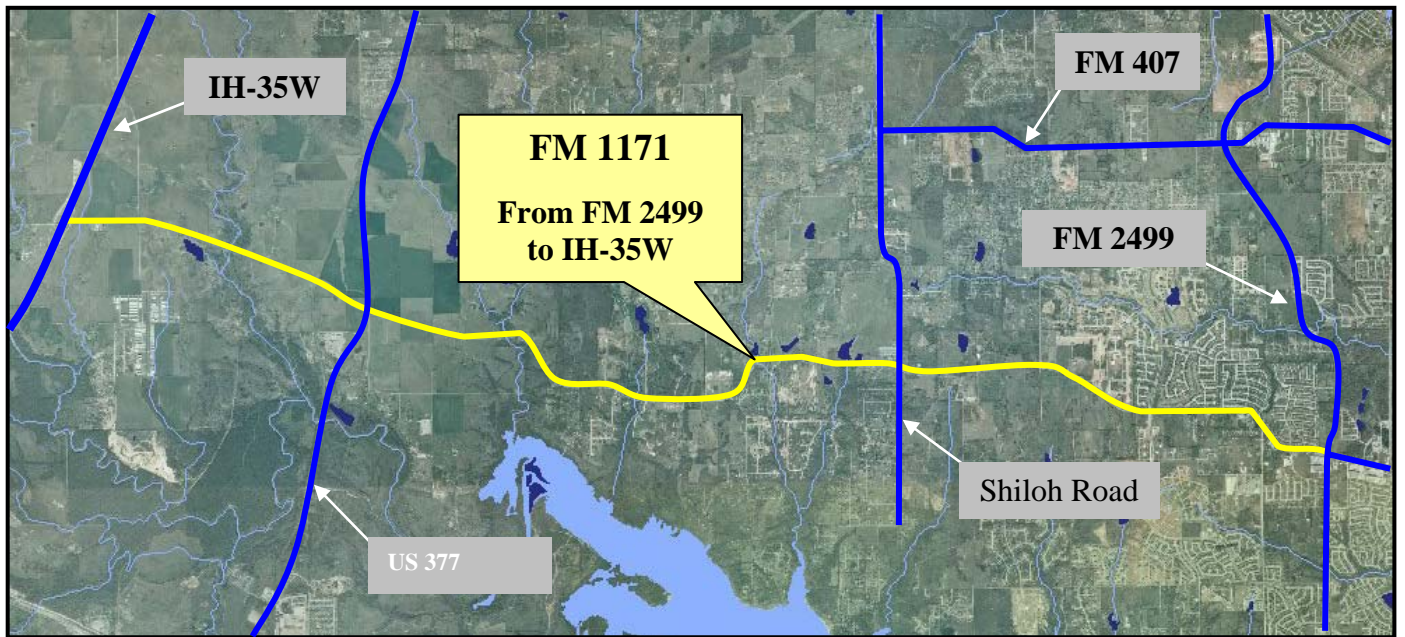
Description	Denton County	TxDOT	COG	Others
Design, Right-of-way Acquisition; and Construction	\$6,935,000 BSRP	\$34,165,000, needs additional \$900,000	\$0	\$3,000,000 Town of Flower Mound

Notes:

FM 1171 is a major east-west route that connects IH-35W, US 377, FM 2499, and IH-35E. Local Advanced Planning and Funding Agreements (LPAFAs) have been prepared and executed for the project section between US 377 and FM 2499. The LPAFA for the section between IH-25W and US 377 is complete and only needs to be executed. The County is looking at the possibility of modifying the LPAFAs to include a shadow toll option. A project update for FM 1171 is attached.

FM 1171

FROM FM 2499 TO IH-35W



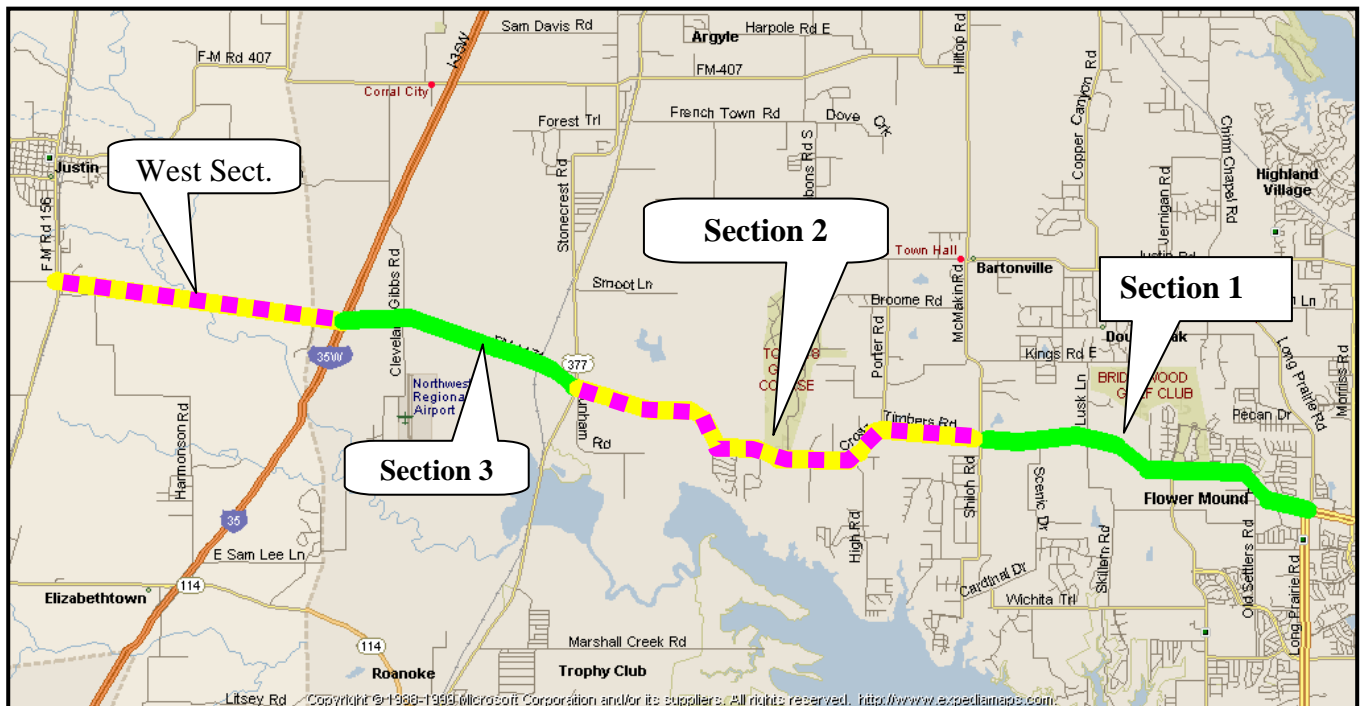
FM 1171

C-S-J:	1311-01-031 (Section 1)	1311-01-034 (Section 2)	1311-01-035 (Section 3)	1311-01-038 (West Ext.)
Limits: (From)	FM 2499	Shiloh	US 377	IH35W
(To)	Shiloh	US 377	IH 35W	FM 156
City/Town:	Flower Mound	Flower Mound	Northlake	Northlake
Length:	17.65 kilometers (10.97 miles)			
Est. Const. Cost:	\$7.181 mil	\$7.563 mil	\$6.750 mil	\$19.3675 mil
Description	This project will widen FM 1171 from 2 lanes to a 6-lane, divided, urban roadway and straighten undesirable curves.			
Contractor	AZB	AZB	TBD	TBD

Schedule

(Estimated schedule - subject to change without notice)

Time Line	Next Steps
09/20/01	EA was sent to Austin.
09/25/01	
12/2001	EA Approval/FONSI
04/2002	Sections 1 and 2 ROW map cleared.
09/2002	LPAFA for Section 1 executed by Denton County/TxDOT
04/2003	ICA with Flower Mound executed
09/2003	LPAFA for Section 2 executed
09/2003	Selection and Retention of ROW Agent for ROW Acquisition
02/2004	Begin ROW acquisition.
11/2003	PS&E 100%
04/2005	ROW Cleared
04/2006	Utilities Cleared
09/2007	Let Date (Current UTP update)



FM 1171

C-S-J:	1311-01-031 (Section 1)	1311-01-034 (Section 2)	1311-01-035 (Section 3)	1311-01-038 (West Ext.)
Limits: (From)	FM 2499	Shiloh	US 377	IH35W
(To)	Shiloh	US 377	IH 35W	FM 2499
Description	This project will widen FM 1171 from 2 lanes to a 6-lane, divided, urban roadway and straighten undesirable curves.			

History:

- TxDOT's rehab funds will construct 3 lanes and local match funds will be used for the other 3 lanes.
- Denton County Commissioners Court approved reallocation of Better Safer Roads Program funds from West Extension to Section 1.
- 09/25/01 – LPAFA approved by Commissioners Court.
- 12/20/01 – EA was approved with a FONSI (Finding Of No Significant Impact).
- 08/20/02 - LPAFA for Section 1 was approved.
- 4/15/02 - ITS met with Denton County Civil Attorney to discuss necessary agreements with Town of Flower Mound with respect to ROW acquisition and most qualified firm to begin ROW acquisition.
- 08/20/02 - LPAFA for Section 1 was re-approved.
- FM 1171 - Denton County voted to reallocate Better Safer Roads Program funds from FM 1171 from IH 35W to FM 156 to FM 1171 Section 1 from FM 2499 to Shiloh Road.
- This project is now in the 2002/2004 TIP. Wes McClure thinks we can let sections 1 and 2 at the same time.
- Section 2 ROW map has been cleared for acquisition.
- LPAFA for FM 1171 (1311-01-031) Section 1 approved. It has been approved through the construction phase.
- Section 1 ROW map cleared for acquisition.
- LPAFA for Section 2 approved by Denton County September 23, 2003.
- RFP for Right-of -Way services were received and closed on October 6, 2003.
- LPAFA for Section 2 has been approved by TxDOT, November 2003.
- Griffin & Jones was retained for ROW acquisition on FM 1171 November 2003.

Current Activities:

- Denton County to coordinate meeting between Griffin & Jones and TxDOT regarding the ROW process.
- A utility summary (similar to that of FM 3040) was requested, this will be prepared for a future meeting.