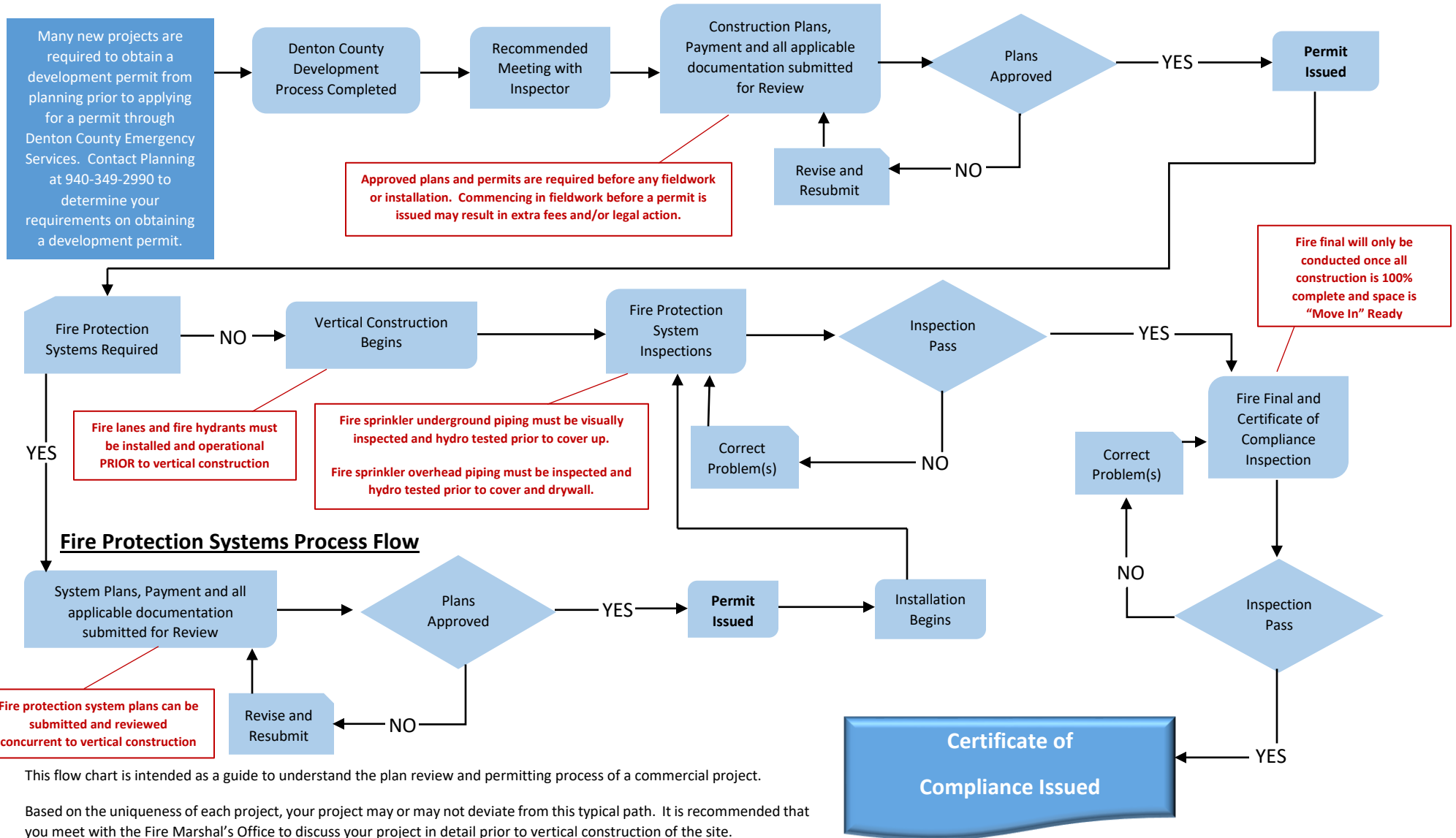




Permit and Plan Review Process for New Construction

Commercial Building Construction Process Flow



This flow chart is intended as a guide to understand the plan review and permitting process of a commercial project.

Based on the uniqueness of each project, your project may or may not deviate from this typical path. It is recommended that you meet with the Fire Marshal's Office to discuss your project in detail prior to vertical construction of the site.

It is the intent of the Denton County Emergency Services/Fire Marshal's Office to assist the contractor in the permit and inspection process in order to be successful.