

Regional Storm Water Program Highlights

The North Central Texas Council of Governments (NCTCOG) has worked with local governments in the Dallas-Fort Worth metroplex for over a decade to develop a cooperative regional storm water management program. The following examples are just a few of the many successful accomplishments achieved by the program. For more information, please visit our web site listed at the bottom.

Public Education



Our Water - Take It Personally is the slogan for our public education program to raise the level of understanding of storm water runoff. Key features of early efforts included articles, press releases, brochures, displays and promotional items. NCTCOG has since expanded the initial efforts under the guidance of a Storm Water Public Education Task Force. The Task Force seeks to promote municipal storm water education through the exchange of professional experience, and explores, develops and implements opportunities for mutual cooperation. Current efforts of the Task Force include a regional curb-marking program, and the *Texas SmartScape™* program described below. The overall goal of the Task Force is to create a unified storm water public education message for the region while maintaining the uniqueness of individual municipal programs.

Texas SmartScape™ CD and Website

Completed in May 2001, the award-winning *Texas SmartScape™* CD promotes the planting of native and adapted plants that typically require less water, pesticides, and fertilizers to grow. The CD contains a wealth of information on designing and caring for a landscape as well as an interactive database of over 200 native and adapted plants specifically selected for North Central Texas. *SmartScape™* is an effective new-development and public education BMP tool for municipal storm water management programs. But it goes beyond that by offering water conservation and water pollution prevention messages, as well as information on household hazardous waste reduction, composting, and recycling. *SmartScape™* is now available as an interactive web site for greater public access. Visit the site at www.txsmartscape.com.



Identifying Illicit Connections

The first part of the storm water Phase I permit application required field screening of storm drainage outfalls during dry weather to detect illicit connections to storm sewers. NCTCOG assisted cities with maps to identify field screening locations and worked with the permittees to develop a common scoring system to rate each outfall. NCTCOG received the scores digitally and incorporated them into a database that was used to develop color-coded maps indicating the ratings. Although monitoring is not required for Phase II, there is interest in developing a similar program for the Phase II cities.

Regional Monitoring Program

NCTCOG, in cooperation with seven Phase I cities and TxDOT, the U.S. Geological Survey, and regional consultants, designed a monitoring program for the Dallas/Fort Worth region. An initial network of 30 sites across the Metroplex was sampled for seven storm events each during the application phase. This provided a firm statistical base to evaluate storm water quality, improved the number of seasonal samples, and provided a stronger characterization of typical runoff within the Metroplex. During the permit phase, the network was streamlined to 15 non-redundant sites, with an additional seven mixed land use outfall or in-stream sites. The monitoring program is being re-evaluated to implement a watershed approach that uses only in-stream sites as part of the next five-year permit term.

Phase II Storm Water Management Video

NCTCOG produced a video to assist local governments in North Texas in their efforts to manage storm water runoff. The video explains the water quality problems of storm water runoff, recent federal and state storm water regulations, the benefits of regional cooperation and activities underway through the NCTCOG storm water program. The primary audience for the 20-minute video is city and county elected officials, administrators, and storm water professionals. However, the video is also appropriate for environmental organizations or civic groups and can be used as an environmental education piece for secondary students. EPA further adapted the video for use nation-wide for general educational purposes. Information on how to purchase a copy can be found at www.dfwstormwater.com.

Integrated Storm Water Management

The *integrated* Storm Water Management (iSWM) program has been developed by NCTCOG to provide guidance for all development and redevelopment related storm water activities in North Central Texas. The purpose of this program is to provide comprehensive guidance for *integrated* storm water management throughout each phase of development and redevelopment, including planning, design, construction, operation and maintenance. The iSWM series of manuals include:



The **iSWM Policy Guidebook** (Draft) is designed to provide guidance for the local jurisdictions and developers on the basic principles of effective urban storm water management. The **iSWM Design Manual for Development/Redevelopment** (Draft) is a detailed design document to guide developers, consultants, and government agencies on the preparation of an *integrated* Storm Water Management Site Plan including design techniques for the control and management of storm water quality and quantity for new developments and redevelopments. The **iSWM Design Manual for Construction** provides guidance on the control of sediment and other pollutants on construction sites. The Design Manual for Construction replaces NCTCOG's Storm Water Quality Best Management Practices for Construction Activities Manual.

The manuals may be downloaded and additional information is available at www.iswm.dfwinfo.com.

Best Management Practices Manuals

To assist local governments in meeting water quality regulations, NCTCOG worked with local public and private entities in the early 1990's to develop a series of three best management practices manuals addressing construction activities, post-development source and treatment controls, and industrial activities. After a decade of supporting BMP selection and installation in the region, the construction and post-development manuals have been updated and integrated into the iSWM comprehensive design manual, and the industrial manual has been updated to provide industry with a guide to preparing and implementing a storm

For more information about storm water management in North Central Texas please visit: WWW.DFWSTORMWATER.COM.

water pollution prevention plan compliant with the state's Multi-sector General Permit. The revised industrial manual serves as a tool for local governments to improve water quality by providing practical assistance to their local industries.

Environmentally Friendly Development Practices



The *Develop – Naturally!* brochure and the *Guide to Developing Naturally* are two documents that were prepared to provide tips on environmentally friendly development practices. Techniques for designing and constructing developments that have less impact on the environment are presented in the documents as “Ten Keys to Developing Naturally.” The keys encourage developers to limit grading as much as possible, build in the least environmentally sensitive part of the property, provide open space, preserve streams and floodplains in their natural state, and consider ways to reduce car travel, among others. Both the brochure and the guide can be found at

www.dfwstormwater.com.

BMP Guidance - The Menu of Options

This internet-based tool was created in 2002 to help operators of small MS4s develop a Storm Water Management Plan compliant with the EPA's Phase II regulation requirements. Titled *Storm Water BMPs: Menu of Management Plan Options*, the online menu was developed from a number of sources, including suggestions by participants at storm water workshops held in the North Central Texas region during 2001 and 2002. EPA guidance and local ordinances are also incorporated in the menu structure. The structure of the menu is based on the six minimum measures of EPA's Phase II general permit language, with applicable regulatory reference for each measure leading into a broad collection of BMPs that specifically address the minimum measure. Designed to support EPA's concept of municipal self evaluation and flexible plans that address local conditions, the menu offers multiple options, suggesting ideas for innovation as well as providing a basic list of the BMPs found in current sources. The Menu of Options is available at

www.dfwstormwater.com.

What is NCTCOG?

The North Central Texas Council of Governments (NCTCOG) is a voluntary association of local governments established in 1966 to assist local governments in planning for common needs, cooperating for mutual benefit, and coordinating for sound regional development. NCTCOG's purpose is to strengthen both the individual and collective power of local governments and to help them recognize regional opportunities, eliminate unnecessary duplication, and make joint decisions.

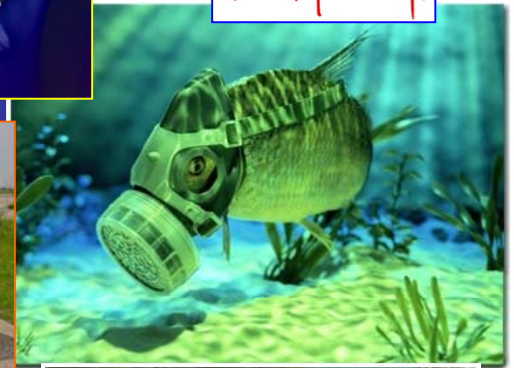
NCTCOG serves a 16-county region of North Central Texas centered around the two urban centers of Dallas and Fort Worth. Currently, NCTCOG has 232 member governments including all 16 counties, 164 cities, 26 school districts, and 26 special districts.



North Central Texas Council of Governments
Department of Environment & Development
Centerpoint Two
616 Six Flags Drive
P.O. Box 5888
Arlington, TX 76005-5888

Phone (817) 695-9210
Fax (817) 695-9191
Web site www.nctcog.org/envir
July 2004

Storm Water Management



in North Central Texas