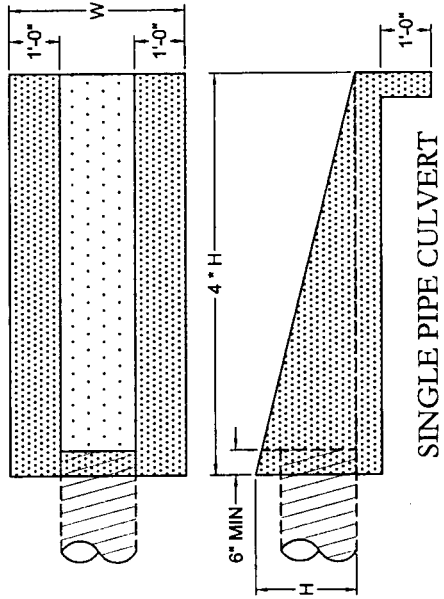
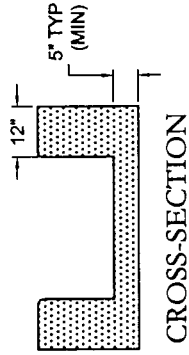


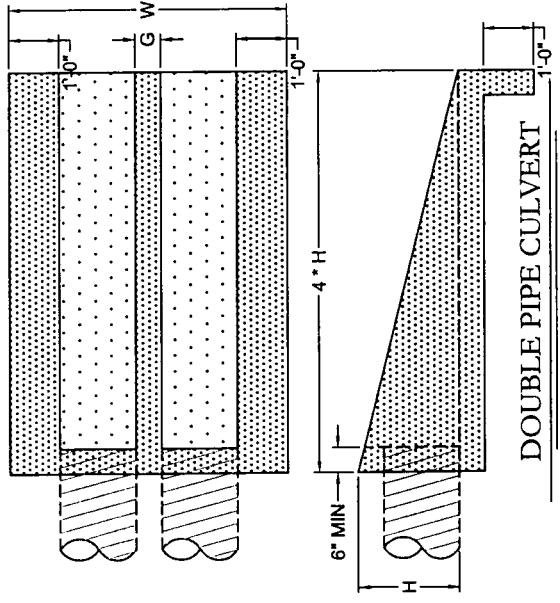
# SAFETY END TREATMENT WITHOUT SLOPED INSERTS



SINGLE PIPE CULVERT

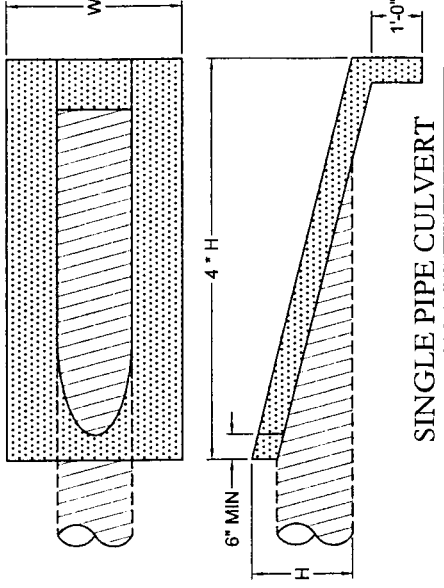


CROSS-SECTION

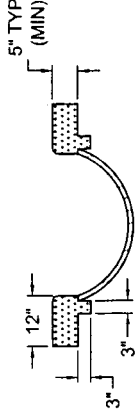


DOUBLE PIPE CULVERT

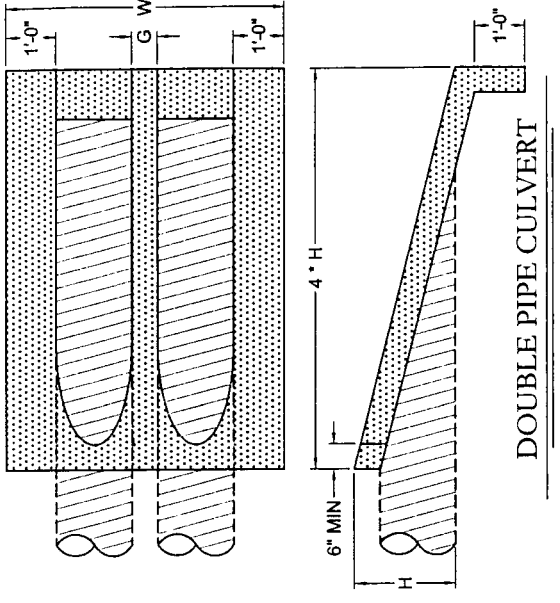
# SAFETY END TREATMENT WITH SLOPED INSERTS



SINGLE PIPE CULVERT



CROSS-SECTION



DOUBLE PIPE CULVERT



THIS DOCUMENT CONTAINS INFORMATION WHICH IS REGARDED AS STANDARD TYPICAL INFORMATION. ANY AND ALL SITUATIONS MAY BE SUBJECT TO CHANGE BY A DENTON COUNTY PUBLIC WORKS PROFESSIONAL. PLEASE CONSIDER THE INFORMATION CONTAINED WITHIN THIS DOCUMENT TO BE MINIMUM STANDARD VALUES.

SIZE OF PIPE (Dia.)	W	H
15"	3' - 3"	1' - 9"
18"	3' - 6"	2' - 0"
21"	3' - 9"	2' - 3"
24"	4' - 0"	2' - 6"
30"	4' - 6"	3' - 0"
36"	5' - 0"	3' - 6"

SIZE OF PIPE (Dia.)	W	H	G
2 - 15"	5' - 0"	1' - 9"	0' - 6"
2 - 18"	5' - 6"	2' - 0"	0' - 6"
2 - 21"	6' - 0"	2' - 3"	0' - 6"
2 - 24"	6' - 6"	2' - 6"	0' - 6"
2 - 30"	8' - 0"	3' - 0"	1' - 0"
2 - 36"	9' - 0"	3' - 6"	1' - 0"

SIZE OF PIPE (Dia)	CONDITION FOR USE OF CROSS PIPES	CROSS PIPE SIZE
12"		
15"		
18"	3 or more Pipe Culverts	3" Std (3.500" O.D.)
21"		
24"		
30"	2 or more Pipe Culverts	3 1/2" Std (4.000" O.D.)
36"	All Pipe Culverts	4" Std (4.500" O.D.)

\* Additional requirements as shown on the above-mentioned TXDOT detail sheet must be met to meet approval.

# TYPICAL DRIVEWAY CULVERT SAFETY END TREATMENT

NOT TO SCALE