

Denton County Public Health

2018 – 2019 Influenza Surveillance Program

CDC Week 44, Week Ending November 3, 2018



Epidemiologic Overview

Denton County

- Low influenza activity was reported in Denton County for week 44.
- 9 positive influenza tests (2 Flu A and 7 Flu B) and 4 hospitalizations were reported by Denton County sentinel providers for week 44.
- Syndromic surveillance for influenza-like illness (ILI) in Denton County increased for week 44 when compared to the previous week.
- 0.5% of the total reported school population was absent due to ILI in week 44.

Texas

- Influenza activity in the state of Texas moved to regional in week 44.
- The percentage of visits for ILI as reported by ILINet providers increased to 3.3% in week 44 compared to the previous week.
- The percentage of specimens testing positive for influenza in Texas decreased to 0.5% in week 44 compared to the previous week.

US

- The proportion of outpatient visits for influenza-like illness (ILI) was 1.8%, which is below the national baseline of 2.2%. 1 of 10 regions reported ILI at or above their region-specific baseline level.
- The geographic spread of influenza in 2 states was reported as regional; 6 states was reported as local; 40 states reported sporadic activity; and 2 states reported no activity.
- The percentage of specimens testing positive for influenza in the US was 0.9%.
- The proportion of deaths attributed to pneumonia and influenza (P&I) from the National Center for Health Statistics Mortality Surveillance System for week 43 was 5.4%. This percentage is below the epidemic threshold of 6.1% for week 43.

Figure 1. Influenza Surveillance Summary: Denton County Hospitals and Providers

Week Ending	9/22/18	9/29/18	10/6/18	10/13/18	10/20/18	10/27/18	11/3/18	9/22/18 - Present
CDC Week	38	39	40	41	42	43	44	
Influenza Tests Performed Weekly	183	195	196	242	248	307	271	1642
Total Positive Influenza Tests	1	4	3	2	9	8	9	36
Percent Positive Influenza Tests*	0.5%	2.1%	1.5%	0.8%	3.6%	2.6%	3.3%	
Positive A Influenza	1	2	1	1	4	3	2	14
Positive B Influenza	0	2	2	1	5	5	7	22
Non-differentiated Influenza	0	0	0	0	0	0	0	0
Influenza Hospitalizations	0	1	1	0	4	2	4	12
Influenza-associated Pediatric Deaths	0	0	0	0	0	0	0	0
Influenza-associated Adult Deaths	0	0	0	0	0	0	0	0

* Percent positive tests only includes positive tests from providers reporting number of tests performed weekly

Figure 2. Influenza Positive Tests and Percent Positive, Denton County Hospitals and Providers, 2018-2019 Season

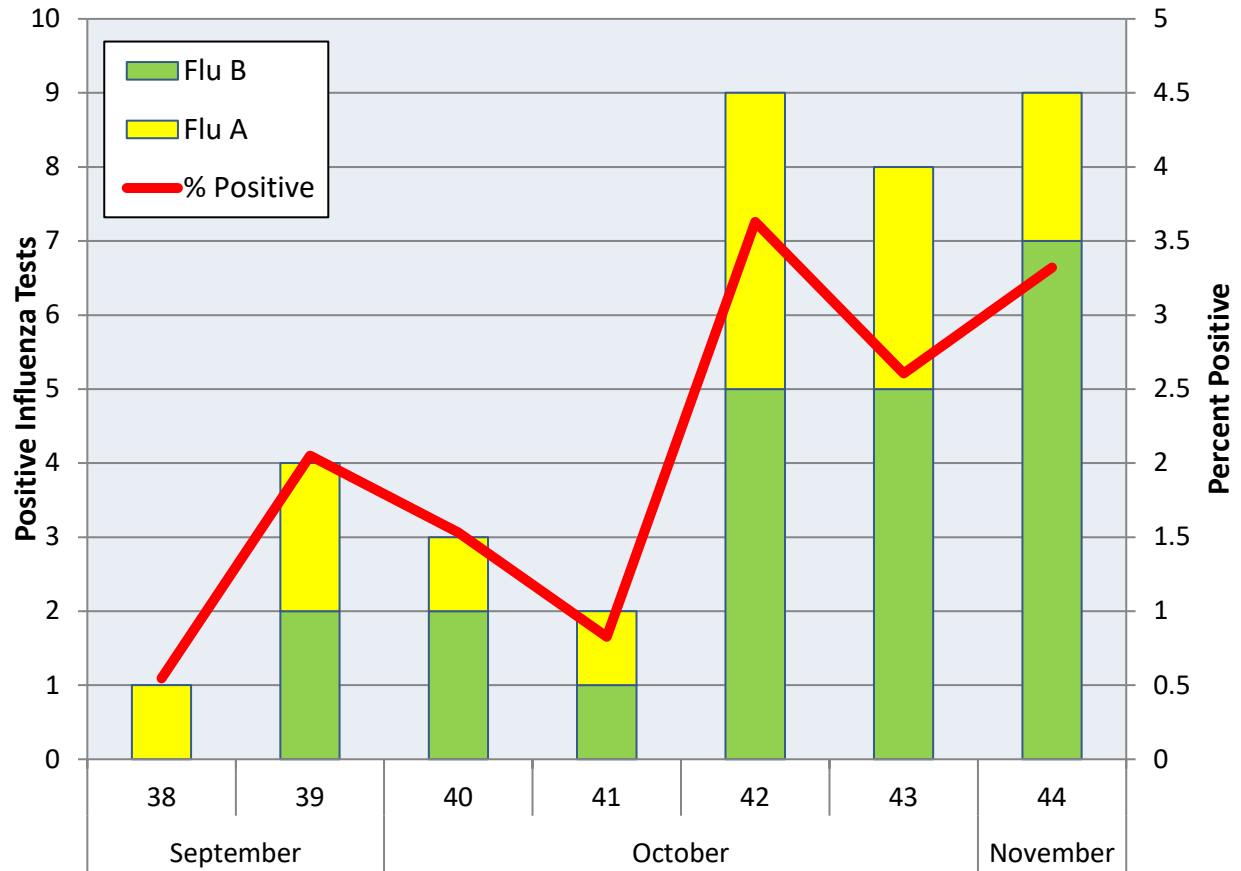
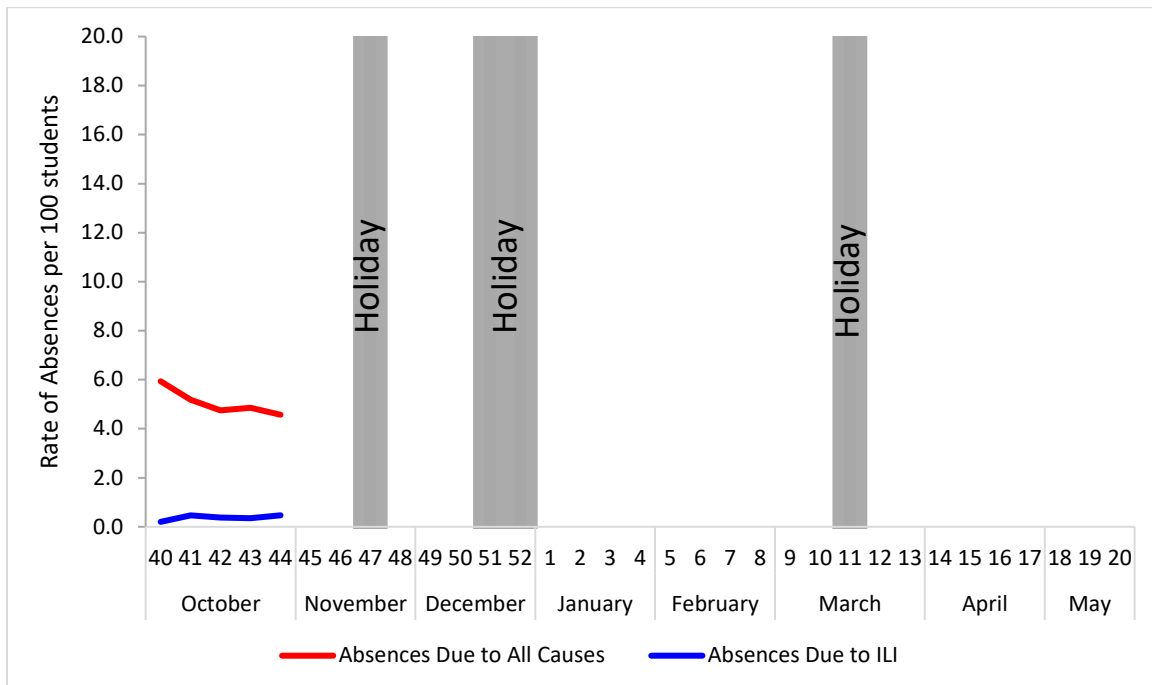


Figure 3. Percent of Absenteeism Due to All Causes and ILI, Denton County Schools*, 2018-2019 Season



*During week 44, a total of 3 Denton County Independent School Districts reported data to Denton County Public Health which included a total of 73,155 students.

Figure 4. Influenza Positive Tests Reported to CDC by U.S. Public Health Laboratories, National Summary, October 1, 2017 – November 3, 2018

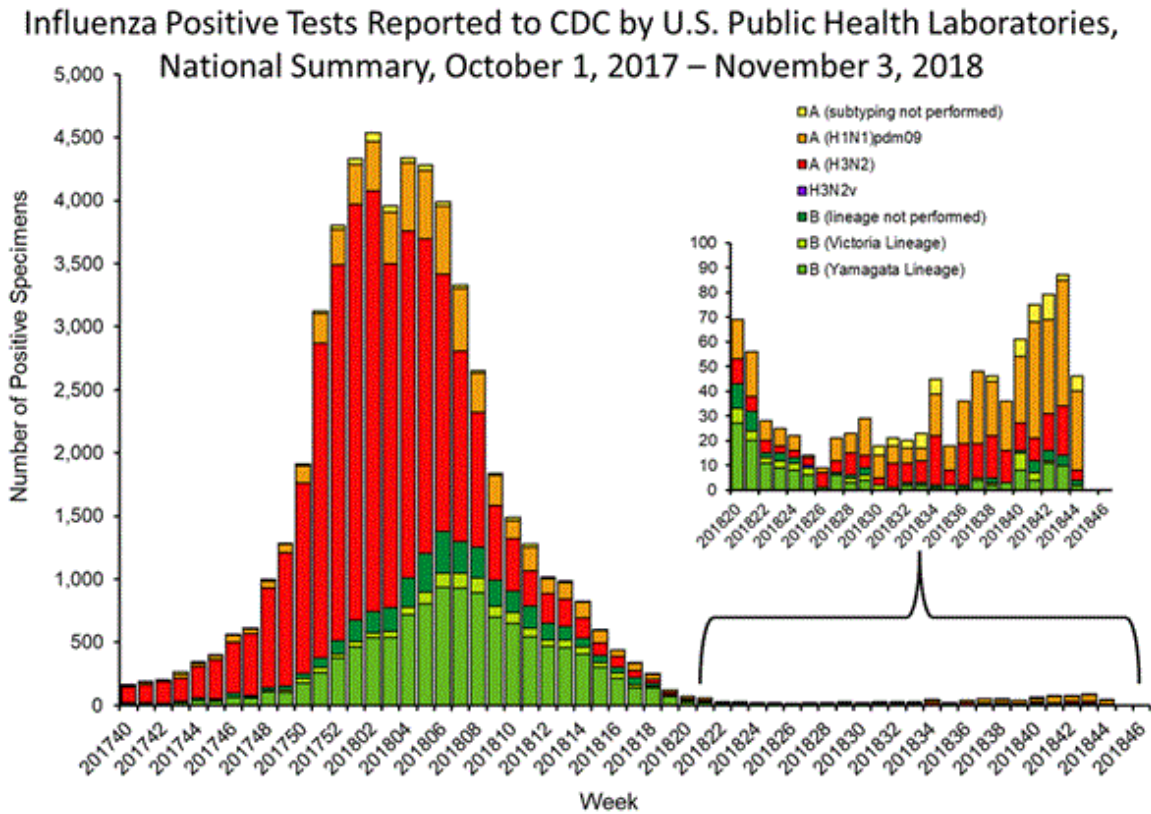


Figure 5. Influenza Positive Tests Reported to CDC by U.S. Clinical Laboratories, National Summary, October 1, 2017 – November 3, 2018

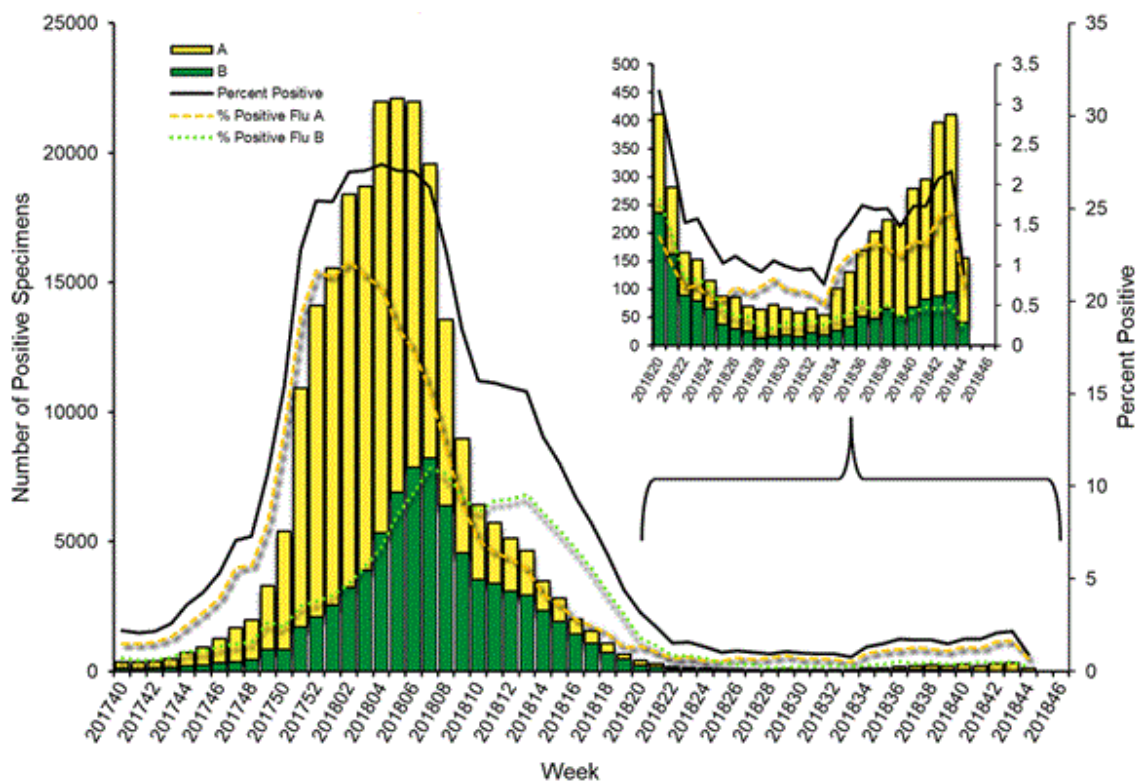


Figure 6. Antigenic Characterization of Influenza Isolates, Since November 3, 2018

Influenza A (H1N1)	70 of 70 (100%) – A/Michigan/45/2015 pdm09-like
Influenza A (H3N2)	49 of 54 (90.7%) – A/Singapore/INFIMH-16-0019/2016-like
Influenza B (Victoria Lineage)	9 of 10 (90%) – B/Colorado/06/2017-like
Influenza B (Yamagata Lineage)	39 of 39 (100%) – B/Phuket/3073/2013-like*

2018-2019 Influenza Vaccine Composition, Northern Hemisphere:

- A/Michigan/45/2015 pdm09-like
- A/Singapore/INFIMH-16-0019/2016-like
- B/Colorado/06/2017-like
- B/Phuket/3073/2013-like*

*2018-2019 Northern Hemisphere quadrivalent influenza vaccine influenza B component

Figure 7. U.S. Virologic Surveillance, Week 44

	Week 44	Data Cumulative since September 30, 2018 (Week 40)
No. of specimens tested	356	3,489
No. of positive specimens*	46	348
<i>Positive specimens by type/subtype</i>		
Influenza A	42 (91.3%)	256 (82.2%)
(H1N1)pdm09	32 (88.9%)	195 (76.8%)
H3N2	4 (11.1%)	59 (23.2%)
Subtyping not performed	6	32
Influenza B	4 (8.7%)	62 (17.8%)
Yamagata lineage	2 (100.0%)	35 (76.1%)
Victoria lineage	0 (0.0%)	11 (23.9%)
Lineage not performed	2	16

Figure 8. ESSENCE Syndromic Surveillance for Influenza-like Illness: Denton County, August 1, 2018- November 3, 2018

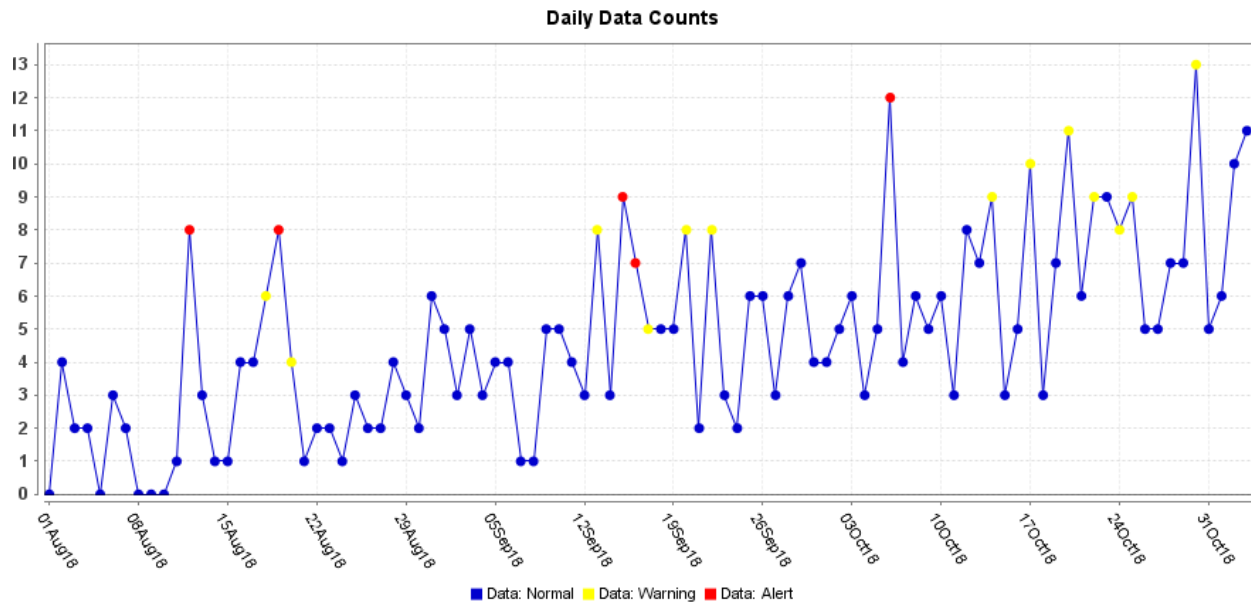


Figure 9. ESSENCE Syndromic Surveillance for Influenza-like Illness: Denton County, October 1, 2017 – November 3, 2018

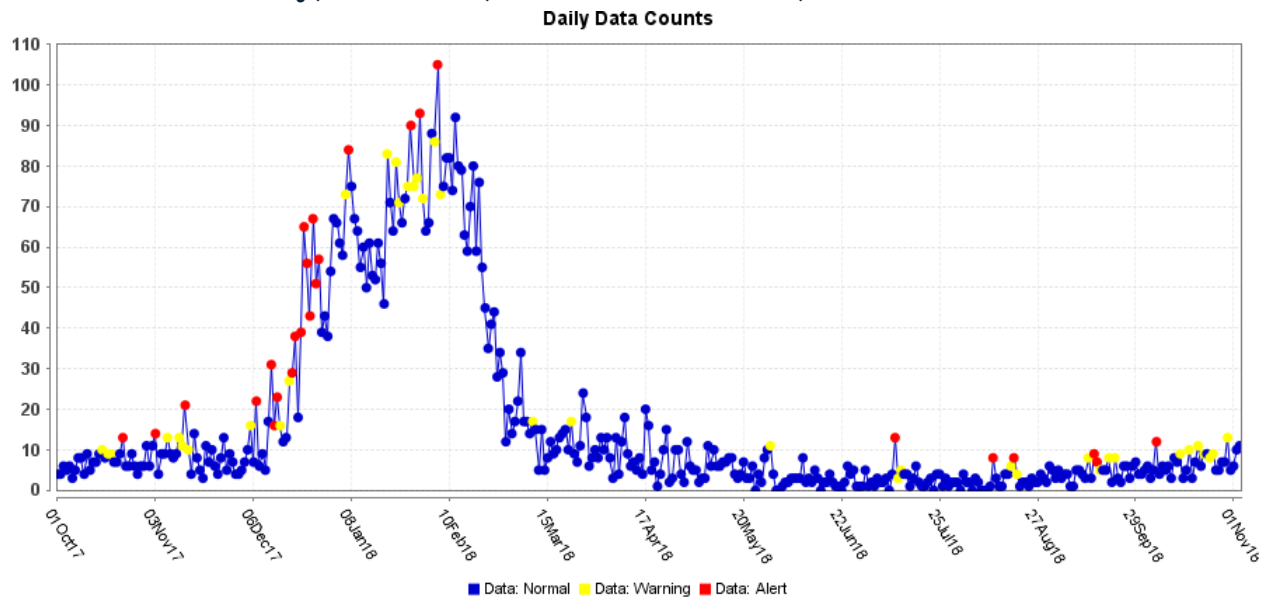


Figure 10. Pneumonia and Influenza Mortality from the National Center for Health Statistics Mortality Surveillance System: Week ending October 27, 2018

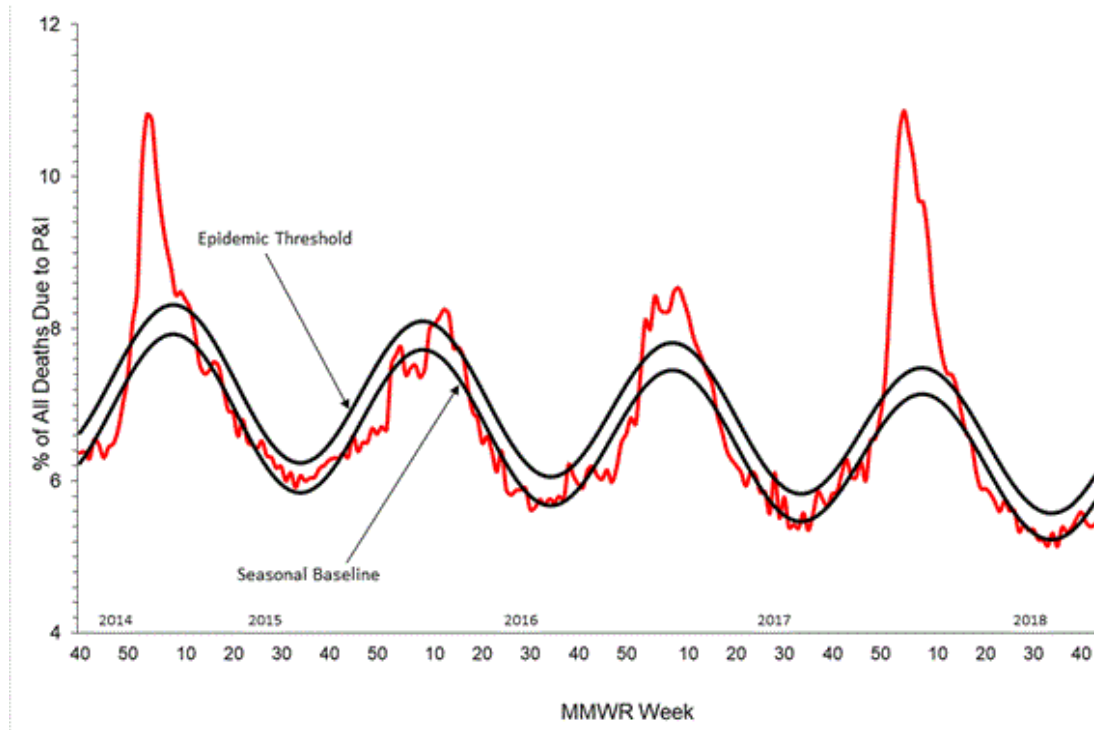


Figure 11. Weekly Influenza Activity Estimates Reported by State and Territorial Epidemiologists: Week 44 – Week Ending November 3, 2018

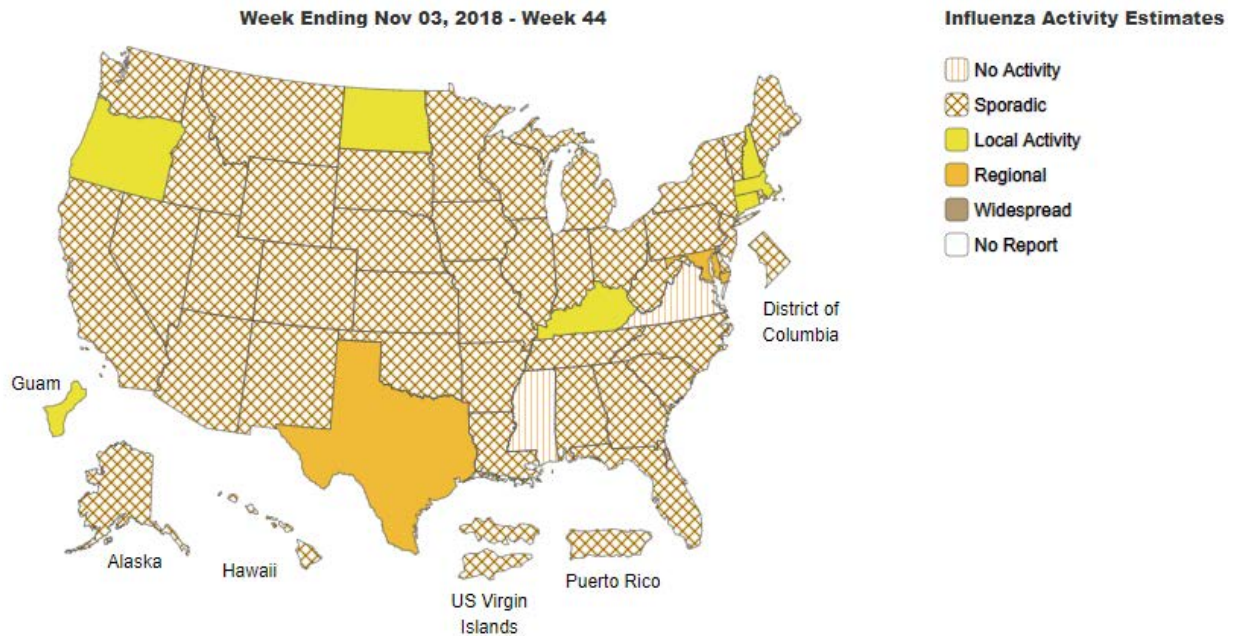
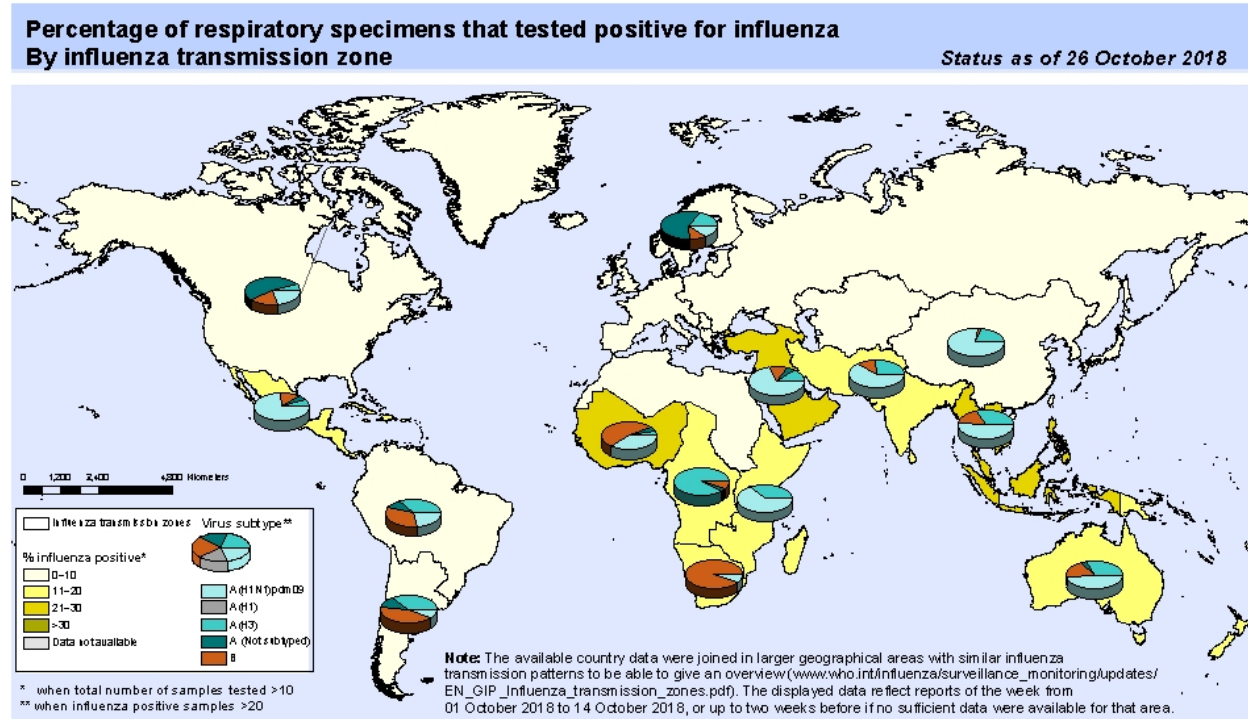


Figure 12. Percentage of Respiratory Specimens that Tested Positive for Influenza: WHO, based on data up to October 26, 2018



The boundaries and names shown and the designations used on this map do not imply the expression of any opinion whatsoever on the part of the World Health Organization concerning the legal status of any country, territory, city or area or of its authorities, or concerning the delimitation of its frontiers or boundaries. Dotted and dashed lines on maps represent approximate border lines for which there may not yet be full agreement.

Data Source:
Global Influenza Surveillance and Response System (GISRS),
FluNet (www.who.int/flu-net)



Please send inquiries to Lily Metzler, MPH – Epidemiologist
Denton County Public Health at Lily.Metzler@dentoncounty.com