

Denton County Public Health
2018 – 2019 Influenza Surveillance Program
CDC Week 38, Week Ending September 22, 2018



Epidemiologic Overview

Denton County

- Minimal influenza activity was reported in Denton County for week 38.
- 1 positive influenza tests (1 Flu A) and 0 hospitalizations were reported by Denton County sentinel providers for week 38.
- Syndromic surveillance for influenza-like illness (ILI) in Denton County increased for week 38 when compared to the previous week.

Texas

- Influenza activity in the state of Texas remains low for week 38.
- The percentage of visits for ILI as reported by ILINet providers decreased to 2.5% in week 38 compared to the previous week.
- The percentage of specimens testing positive for influenza in Texas decreased to 0.77% in week 38 compared to the previous week.

US

- The proportion of outpatient visits for influenza-like illness (ILI) was 1.2%, which is below the national baseline of 2.2%.
- The proportion of deaths attributed to pneumonia and influenza (P&I) from the National Center for Health Statistics Mortality Surveillance System for week 36 was 5.0%. This percentage is below the epidemic threshold of 5.8% for week 36.

Figure 1. Influenza Surveillance Summary: Denton County Hospitals and Providers

Week Ending	9/22/18
CDC Week	38
Influenza Tests Performed Weekly	183
Total Positive Influenza Tests	1
Percent Positive Influenza Tests*	0.5%
Positive A Influenza	1
Positive B Influenza	0
Non-differentiated Influenza	0
Influenza Hospitalizations	0
Influenza-associated Pediatric Deaths	0
Influenza-associated Adult Deaths	0

* Percent positive tests only includes positive tests from providers reporting number of tests performed weekly

Figure 2. Influenza Positive Tests and Percent Positive, Denton County Hospitals and Providers, 2018-2019 Season

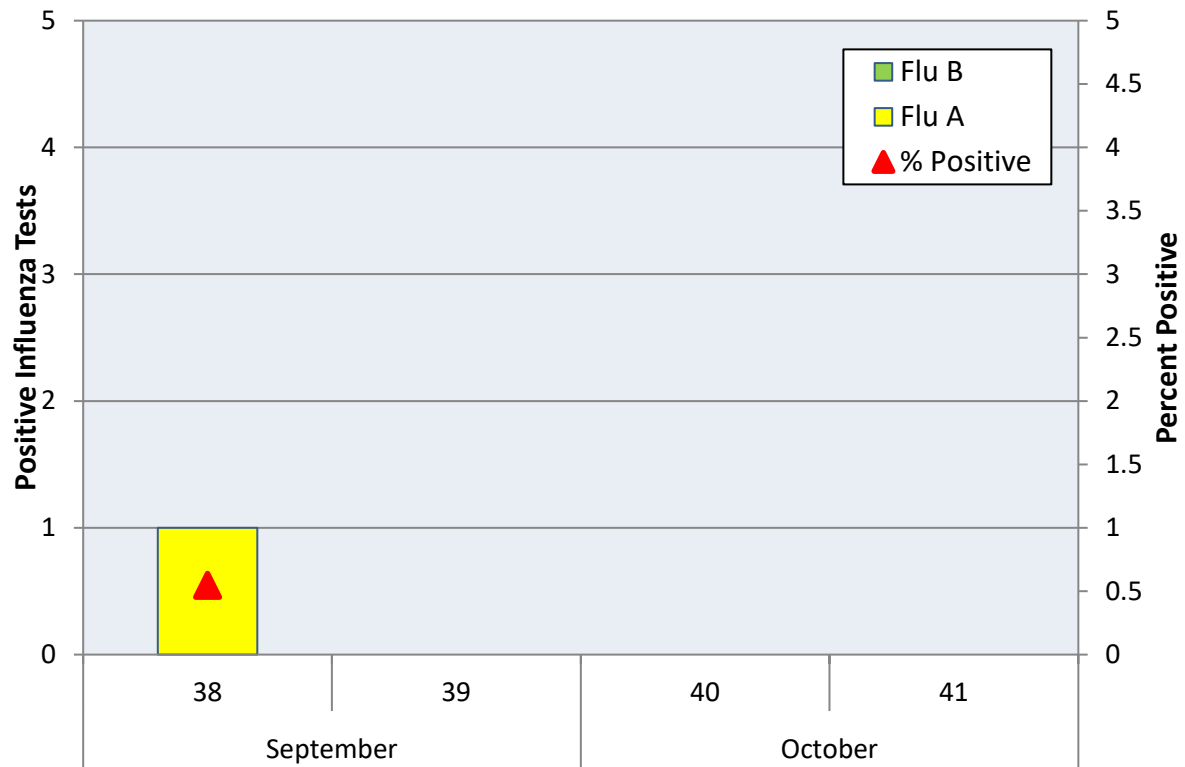


Figure 3. Influenza Positive Tests Reported to CDC by U.S. Public Health Laboratories, National Summary, 2017-2018 Season

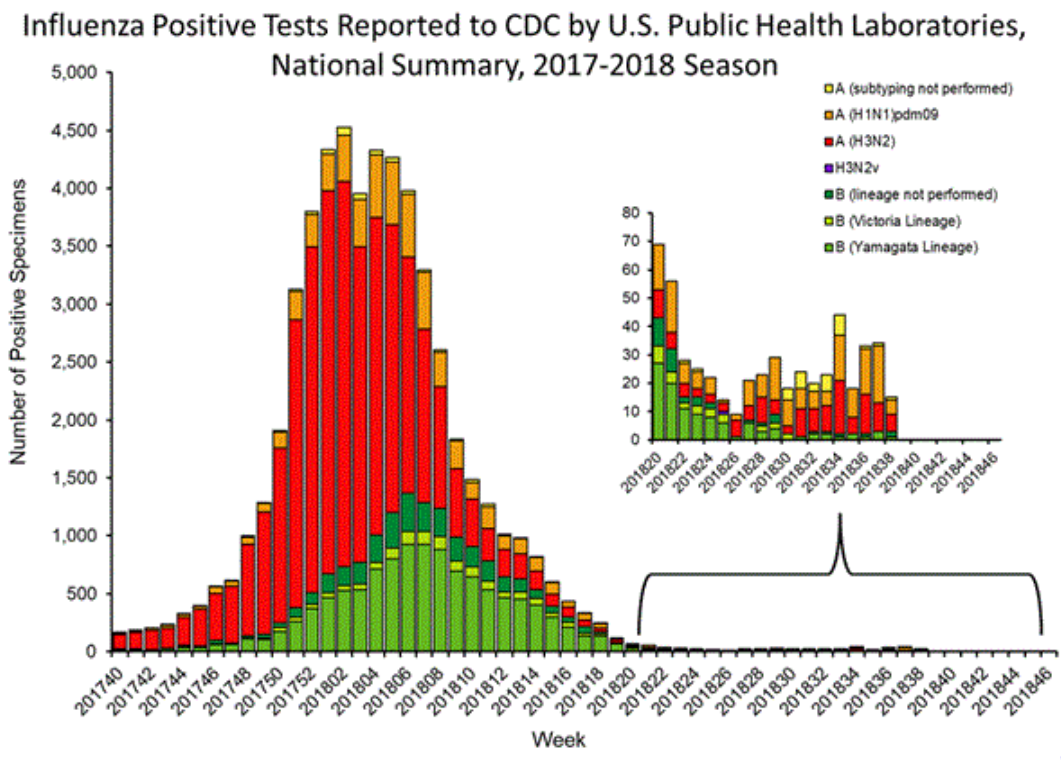


Figure 4. Influenza Positive Tests Reported to CDC by U.S. Clinical Laboratories, National Summary, 2017-2018 Season

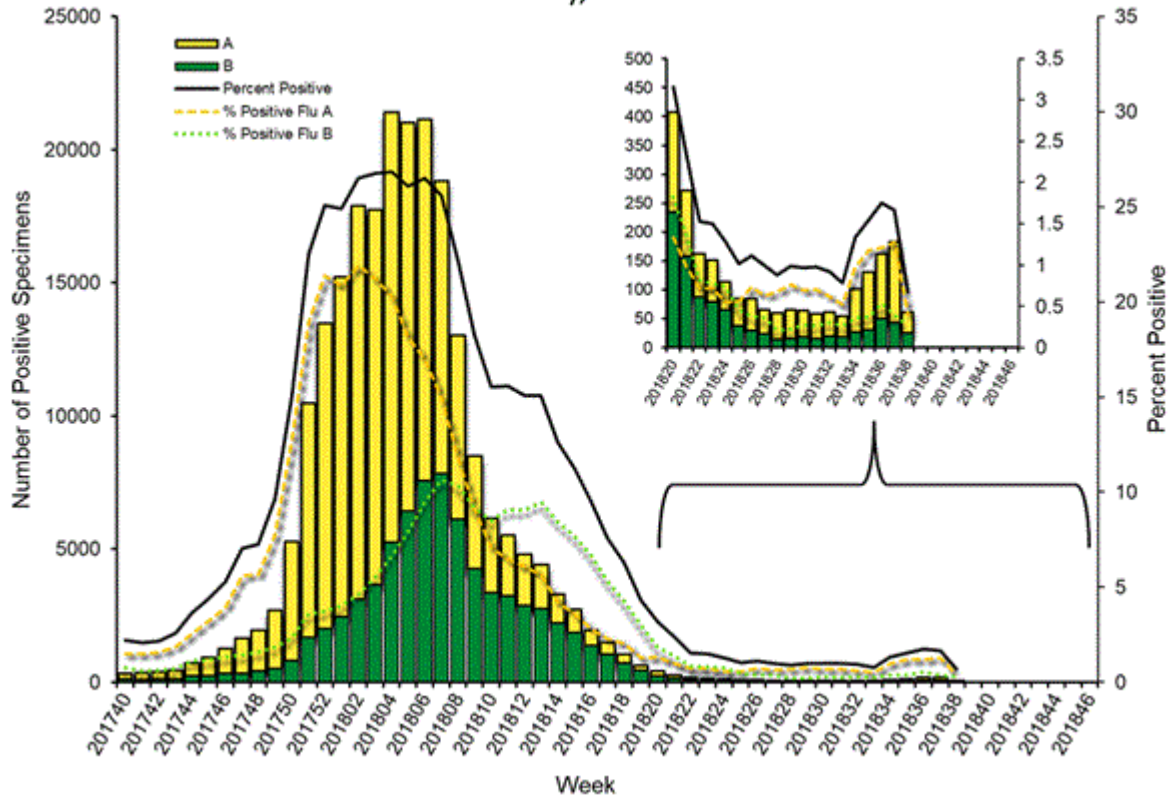


Figure 5. ESSENCE Syndromic Surveillance for Influenza-like Illness: Denton County, August 1, 2018- September 22, 2018

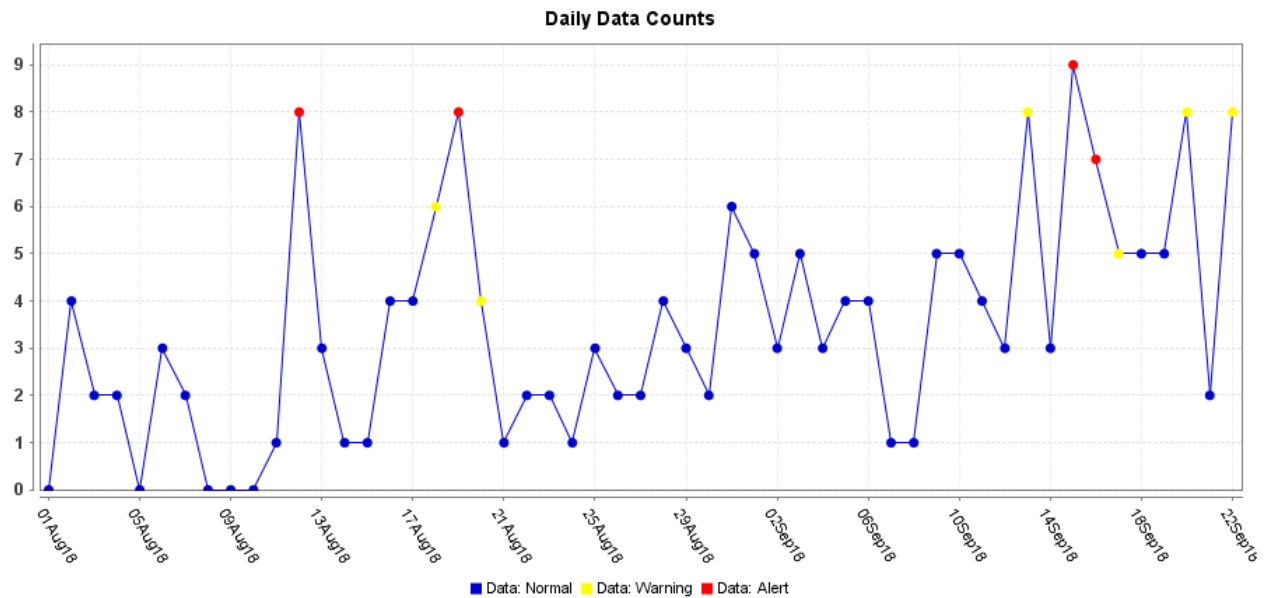
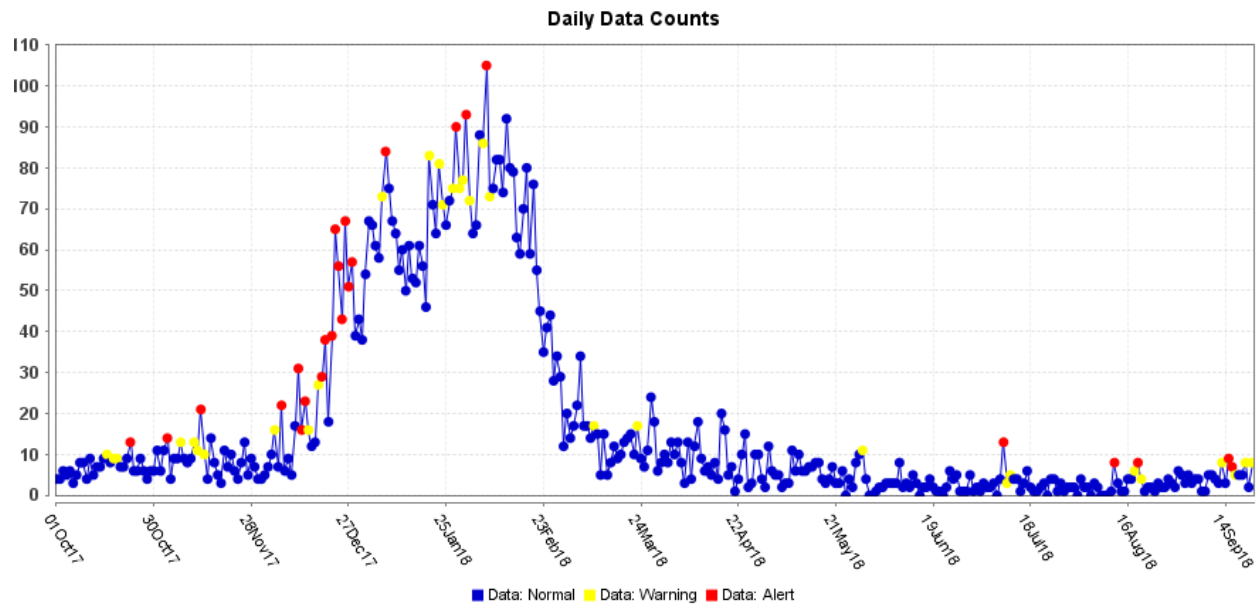


Figure 6. ESSENCE Syndromic Surveillance for Influenza-like Illness: Denton County, October 1, 2017 – September 22, 2018



Data obtained from hospitals participating in the Electronic Surveillance System for the Early Notification of Community-based Epidemics (ESSENCE) from October 2017 through the present. Depicted are the numbers of persons presenting to Emergency Departments according to patient location (Denton region) with self-reported chief complaints of influenza-like illness.

Figure 7. Pneumonia and Influenza Mortality from the National Center for Health Statistics Mortality Surveillance System: Week ending September 8, 2018

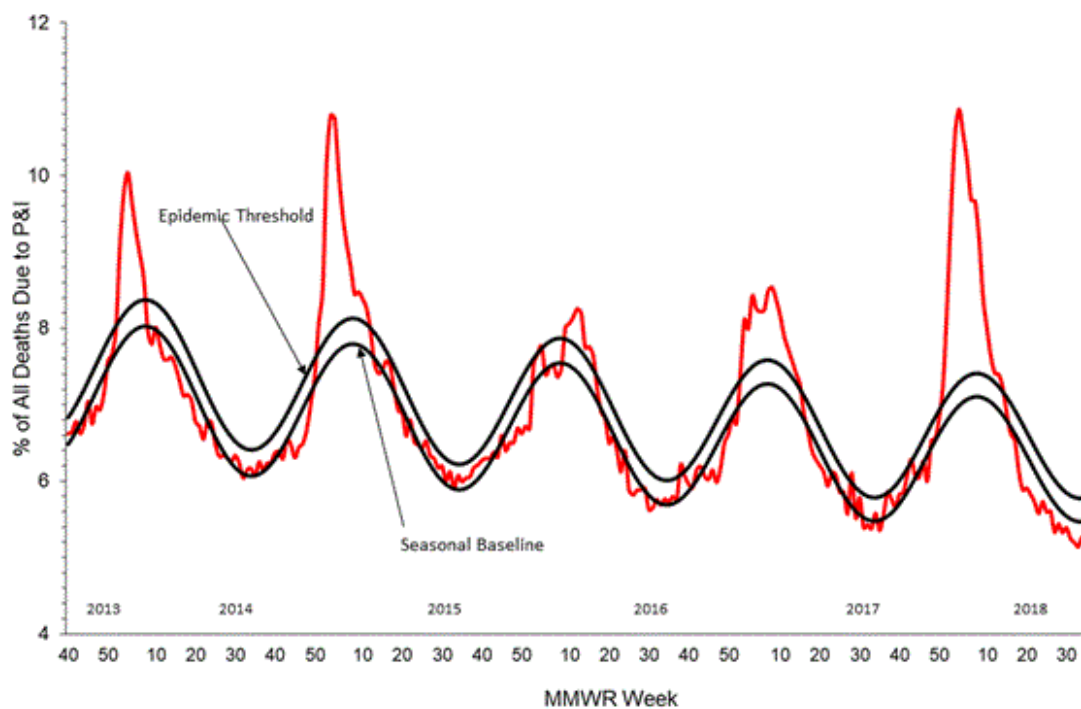
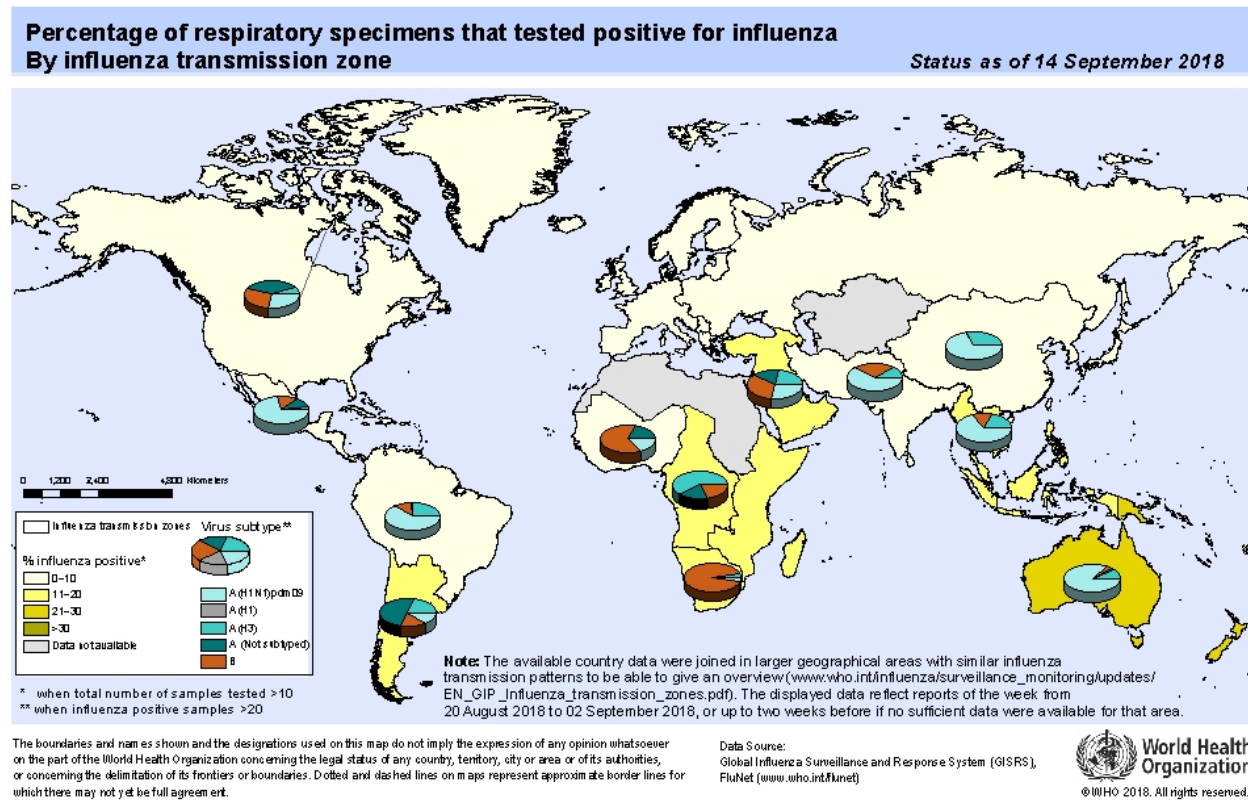


Figure 8. Percentage of Respiratory Specimens that Tested Positive for Influenza: WHO, based on data up to September 14, 2018



Please send inquiries to Lily Metzler, MPH – Epidemiology Investigator
Denton County Public Health at Lily.Metzler@dentoncounty.com