

**Denton County Public Health**  
**2018 – 2019 Influenza Surveillance Program**  
**CDC Week 39, Week Ending September 29, 2018**



**Epidemiologic Overview**

**Denton County**

- Minimal influenza activity was reported in Denton County for week 39.
- 4 positive influenza tests (2 Flu A and 2 Flu B) and 1 hospitalization was reported by Denton County sentinel providers for week 39.
- Syndromic surveillance for influenza-like illness (ILI) in Denton County decreased for week 39 when compared to the previous week.

**Texas**

- Influenza activity in the state of Texas remains low for week 39.
- The percentage of visits for ILI as reported by ILINet providers increased to 2.7% in week 39 compared to the previous week.
- The percentage of specimens testing positive for influenza in Texas decreased to 1.1% in week 39 compared to the previous week.

**US**

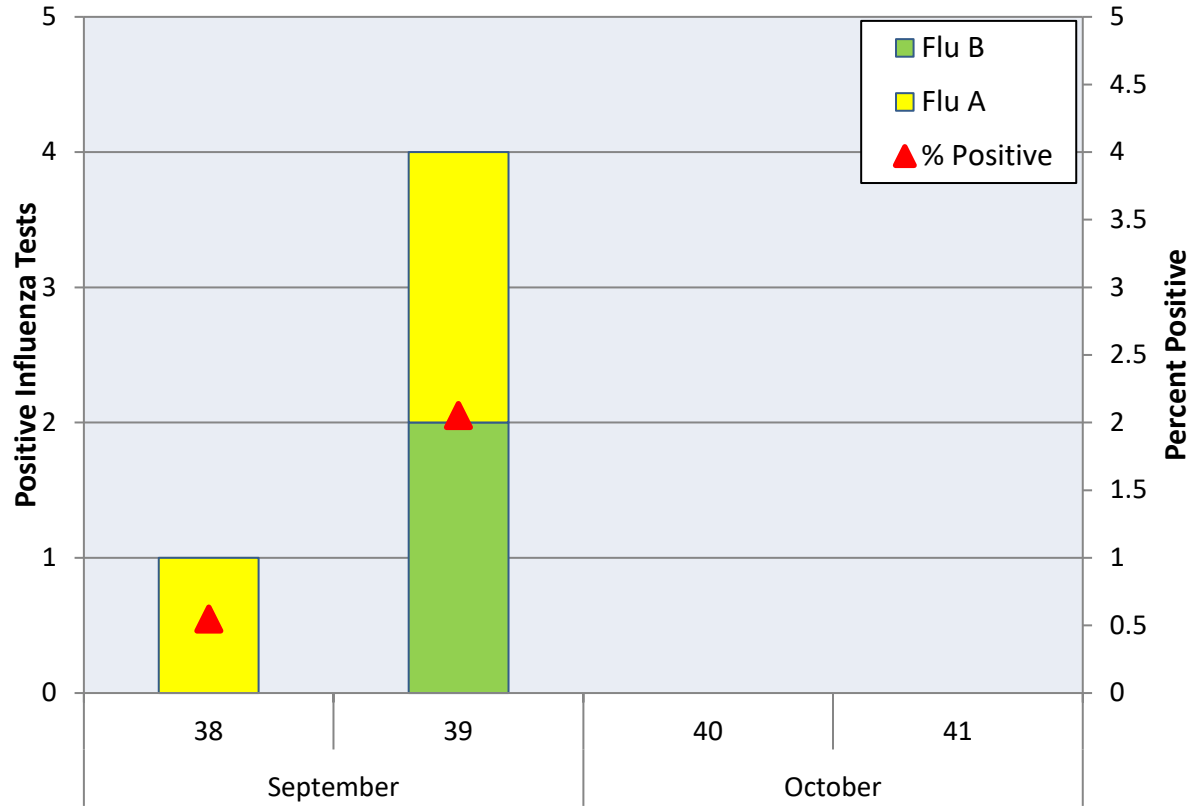
- The proportion of outpatient visits for influenza-like illness (ILI) was 1.2%, which is below the national baseline of 2.2%.
- The proportion of deaths attributed to pneumonia and influenza (P&I) from the National Center for Health Statistics Mortality Surveillance System for week 37 was 5.3%. This percentage is below the epidemic threshold of 5.8% for week 37.

**Figure 1. Influenza Surveillance Summary: Denton County Hospitals and Providers**

<b>Week Ending</b>	<b>9/29/18</b>
<b>CDC Week</b>	39
<b>Influenza Tests Performed Weekly</b>	195
<b>Total Positive Influenza Tests</b>	4
<b>Percent Positive Influenza Tests*</b>	2.1%
<b>Positive A Influenza</b>	2
<b>Positive B Influenza</b>	2
<b>Non-differentiated Influenza</b>	0
<b>Influenza Hospitalizations</b>	1
<b>Influenza-associated Pediatric Deaths</b>	0
<b>Influenza-associated Adult Deaths</b>	0

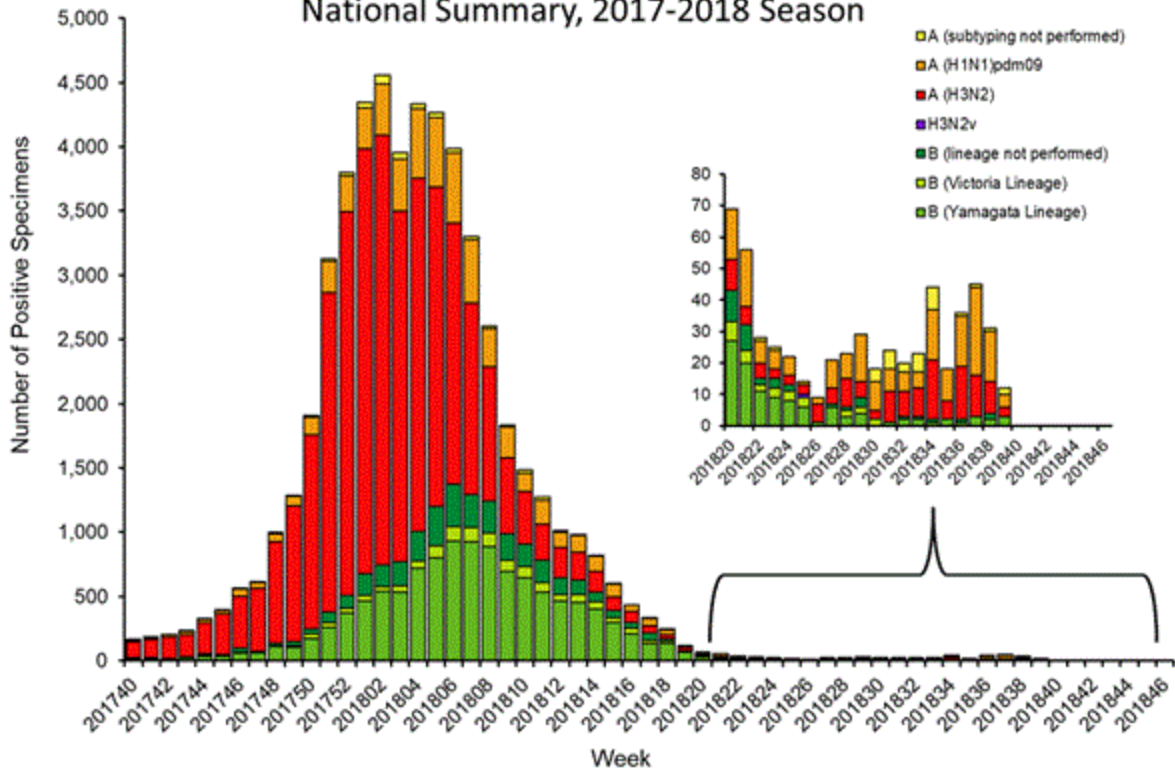
\* Percent positive tests only includes positive tests from providers reporting number of tests performed weekly

**Figure 2. Influenza Positive Tests and Percent Positive, Denton County Hospitals and Providers, 2018-2019 Season**

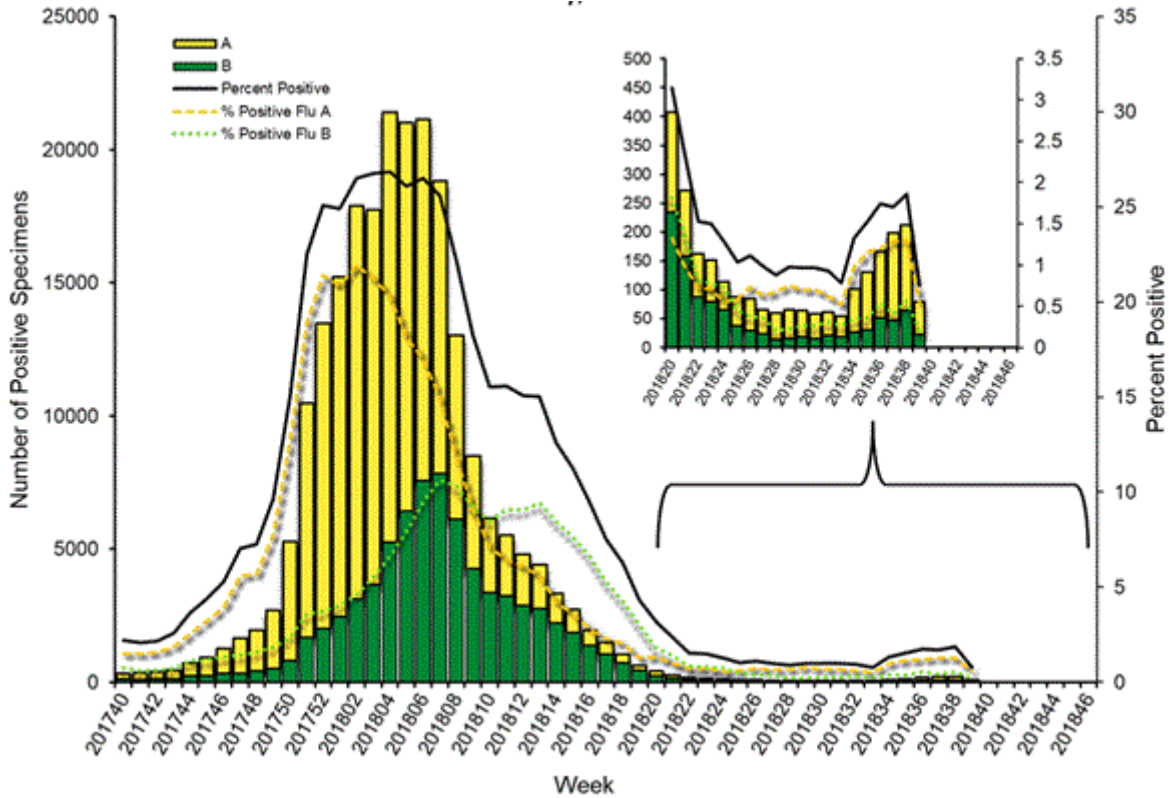


**Figure 3. Influenza Positive Tests Reported to CDC by U.S. Public Health Laboratories, National Summary, 2017-2018 Season**

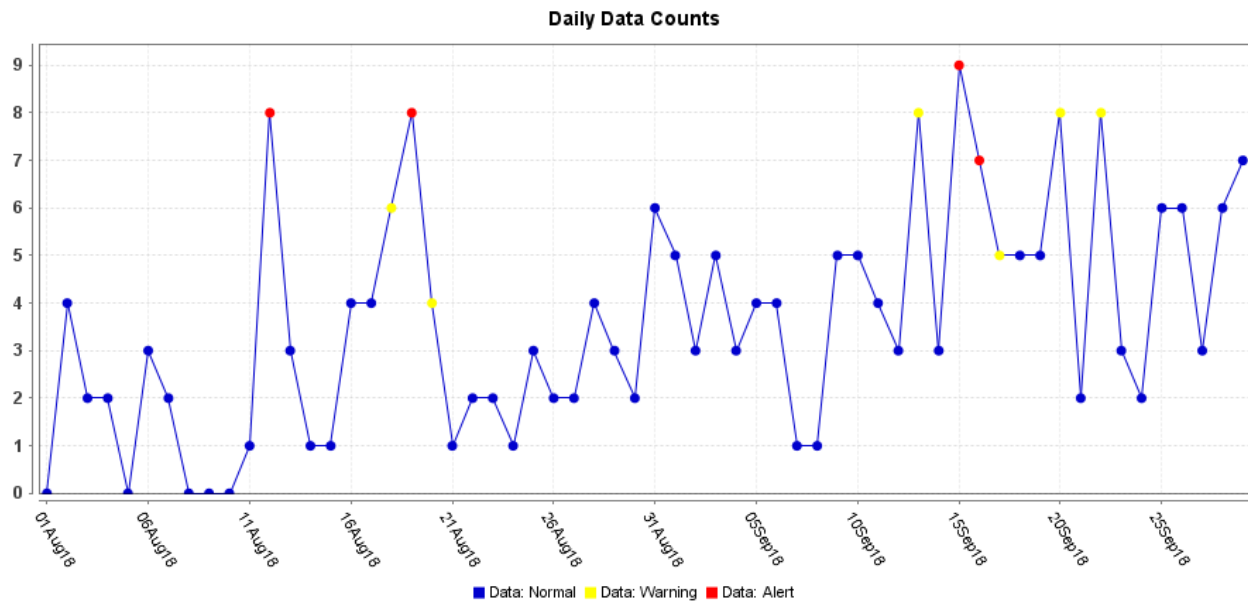
**Influenza Positive Tests Reported to CDC by U.S. Public Health Laboratories, National Summary, 2017-2018 Season**



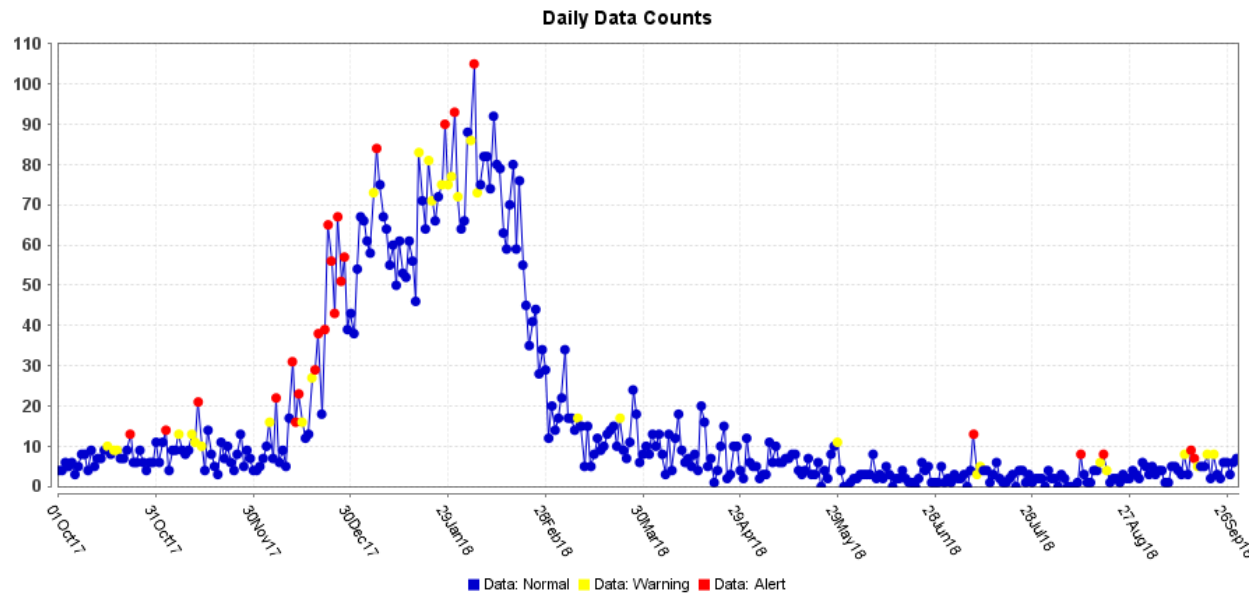
**Figure 4. Influenza Positive Tests Reported to CDC by U.S. Clinical Laboratories, National Summary, 2017-2018 Season**



**Figure 5. ESSENCE Syndromic Surveillance for Influenza-like Illness: Denton County, August 1, 2018- September 29, 2018**

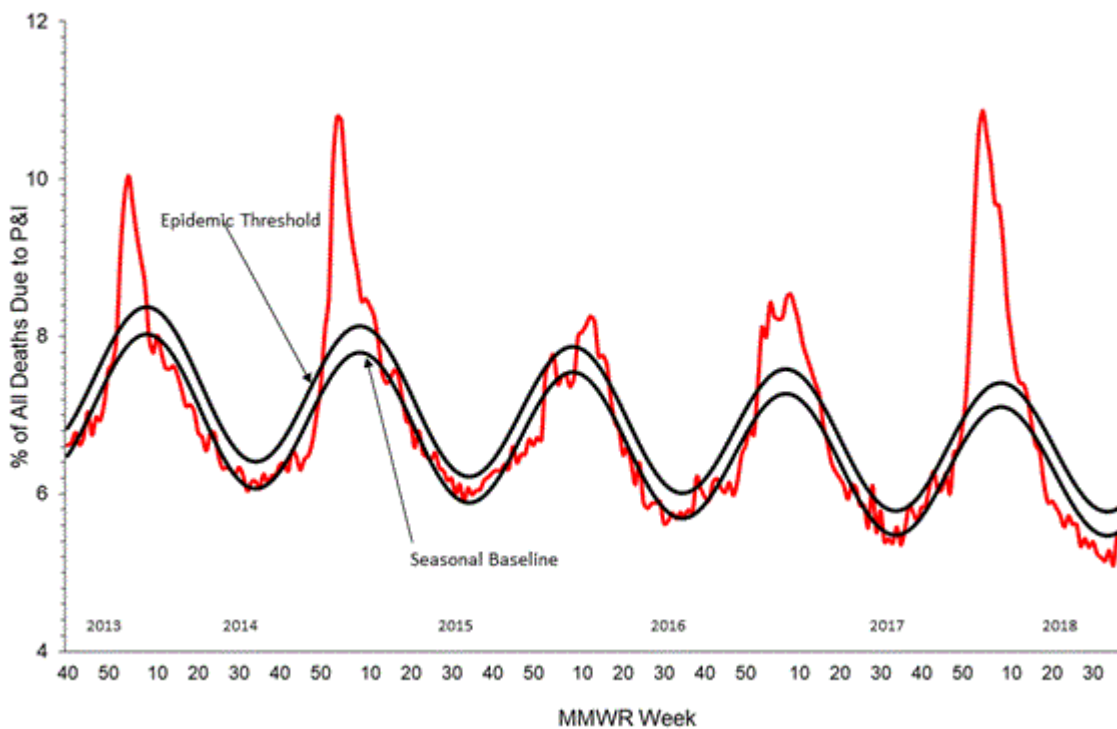


**Figure 6. ESSENCE Syndromic Surveillance for Influenza-like Illness: Denton County, October 1, 2017 – September 29, 2018**

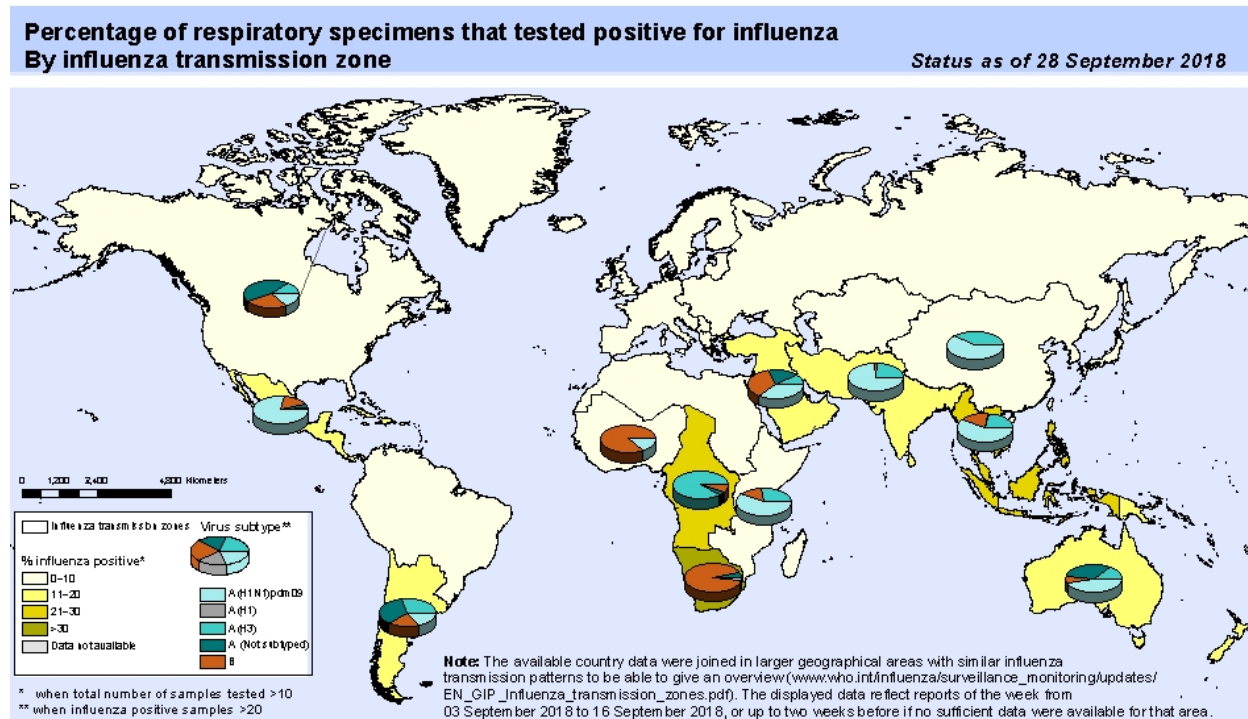


Data obtained from hospitals participating in the Electronic Surveillance System for the Early Notification of Community-based Epidemics (ESSENCE) from October 2017 through the present. Depicted are the numbers of persons presenting to Emergency Departments according to patient location (Denton region) with self-reported chief complaints of influenza-like illness.

**Figure 7. Pneumonia and Influenza Mortality from the National Center for Health Statistics Mortality Surveillance System: Week ending September 15, 2018**



**Figure 8. Percentage of Respiratory Specimens that Tested Positive for Influenza: WHO, based on data up to September 28, 2018**



The boundaries and names shown and the designations used on this map do not imply the expression of any opinion whatsoever on the part of the World Health Organization concerning the legal status of any country, territory, city or area or of its authorities, or concerning the delimitation of its frontiers or boundaries. Dotted and dashed lines on maps represent approximate border lines for which there may not yet be full agreement.

Data Source:  
 Global Influenza Surveillance and Response System (GISRS),  
 FluNet ([www.who.int/flu-net](http://www.who.int/flu-net))



Please send inquiries to Lily Metzler, MPH – Epidemiology Investigator  
 Denton County Public Health at [Lily.Metzler@dentoncounty.com](mailto:Lily.Metzler@dentoncounty.com)