

# Denton County Public Health

## 2019 – 2020 Influenza Surveillance Program

### CDC Week 43, Week Ending October 26, 2019



## Epidemiologic Overview

### Denton County

- Low influenza activity was reported in Denton County for week 43.
- 18 positive influenza tests (0 Flu A and 18 Flu B) and 4 hospitalizations were reported by Denton County sentinel providers for week 43.
- Syndromic surveillance for influenza-like illness (ILI) in Denton County decreased for week 43 when compared to the previous week.
- 0.5% of the total reported school population was absent due to ILI in week 43.

### Texas

- Influenza activity in the state of Texas remains low for week 43.
- The percentage of visits for ILI as reported by ILINet providers increased to 3.29% in week 43 compared to the previous week.
- The percentage of specimens testing positive for influenza in Texas decreased to 4.06% in week 43 compared to the previous week.

### US

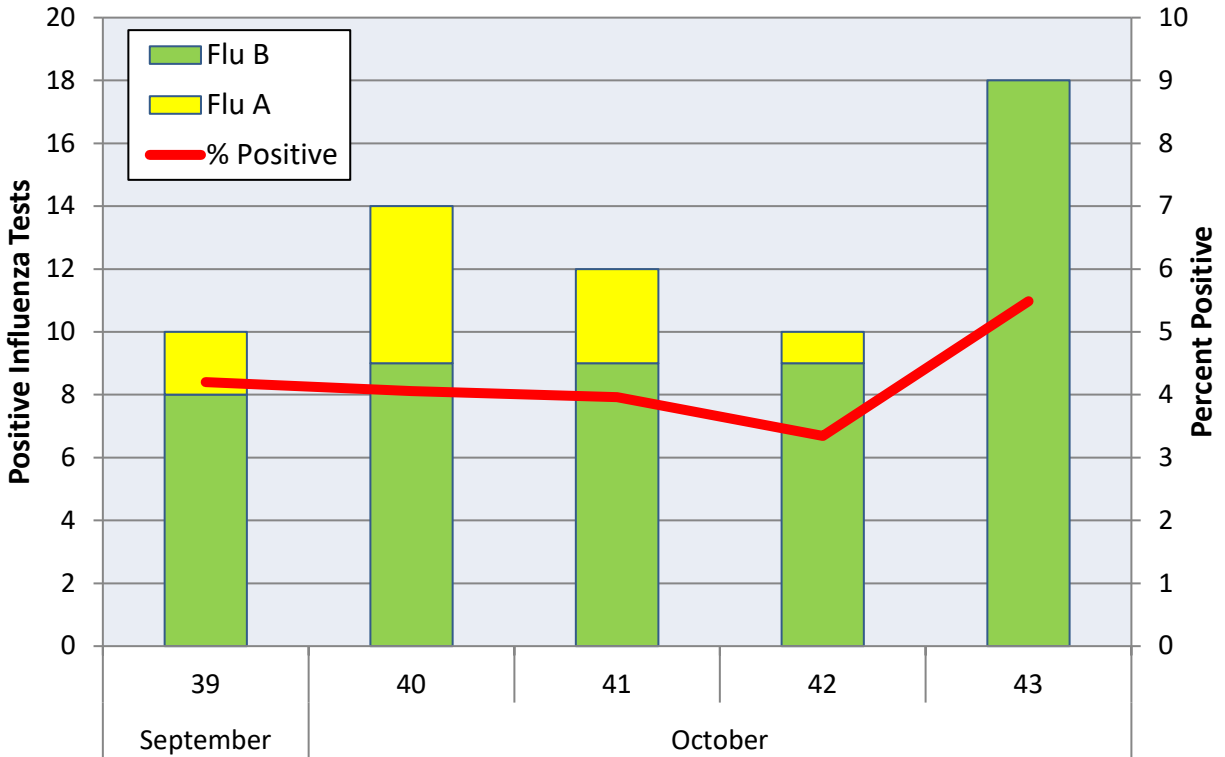
- The proportion of outpatient visits for influenza-like illness (ILI) was 1.9%, which is below the national baseline of 2.4%.
- The geographic spread of influenza in 1 state was reported as regional; 10 states was reported as local; 38 states was reported as sporadic; and 1 state reported no activity.
- The percentage of specimens testing positive for influenza in the US was 2.4%.
- The proportion of deaths attributed to pneumonia and influenza (P&I) from the National Center for Health Statistics Mortality Surveillance System for week 42 was 5.1%. This percentage is below the epidemic threshold of 5.8% for week 42.

**Figure 1. Influenza Surveillance Summary: Denton County Hospitals and Providers**

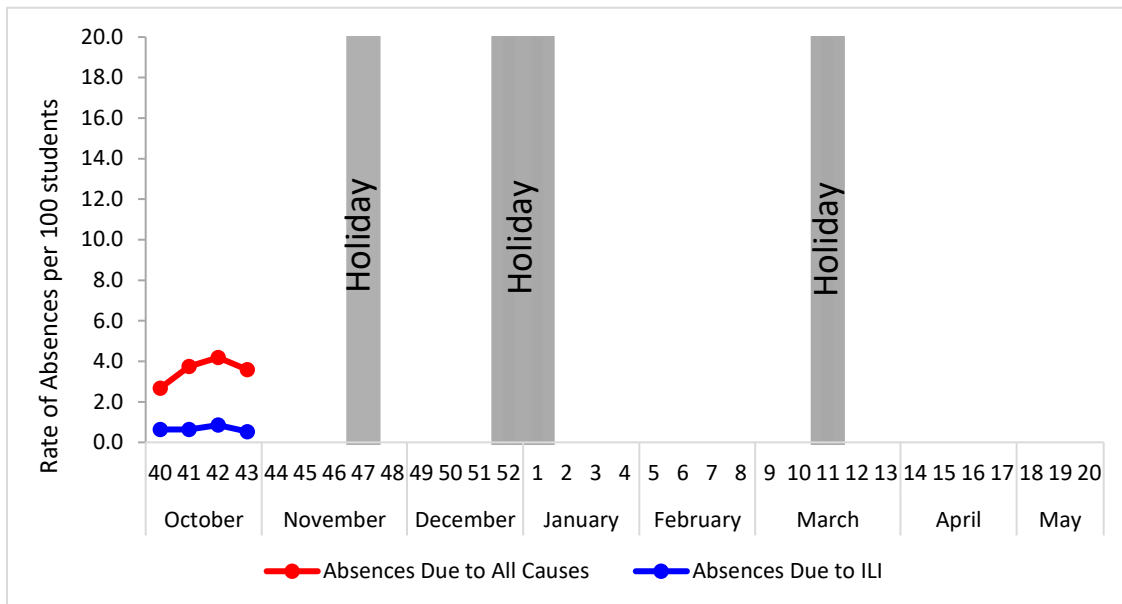
Week Ending	9/28/19	10/5/19	10/12/19	10/19/19	10/26/19	9/28/19 - Present
<b>CDC Week</b>	39	40	41	42	43	
<b>Influenza Tests Performed Weekly</b>	238	345	303	299	328	1513
<b>Total Positive Influenza Tests</b>	10	14	12	10	18	64
<b>Percent Positive Influenza Tests*</b>	4.2%	4.05%	3.96%	3.34%	5.49%	
<b>Positive A Influenza</b>	2	5	3	1	0	11
<b>Positive B Influenza</b>	8	9	9	9	18	53
<b>Non-differentiated Influenza</b>	0	0	0	0	0	0
<b>Influenza Hospitalizations</b>	1	5	4	0	4	14
<b>Influenza-associated Pediatric Deaths</b>	0	0	0	0	0	0
<b>Influenza-associated Adult Deaths</b>	0	0	0	0	0	0

\* Percent positive tests only includes positive tests from providers reporting number of tests performed weekly

**Figure 2. Influenza Positive Tests and Percent Positive, Denton County Hospitals and Providers, 2019-2020 Season**

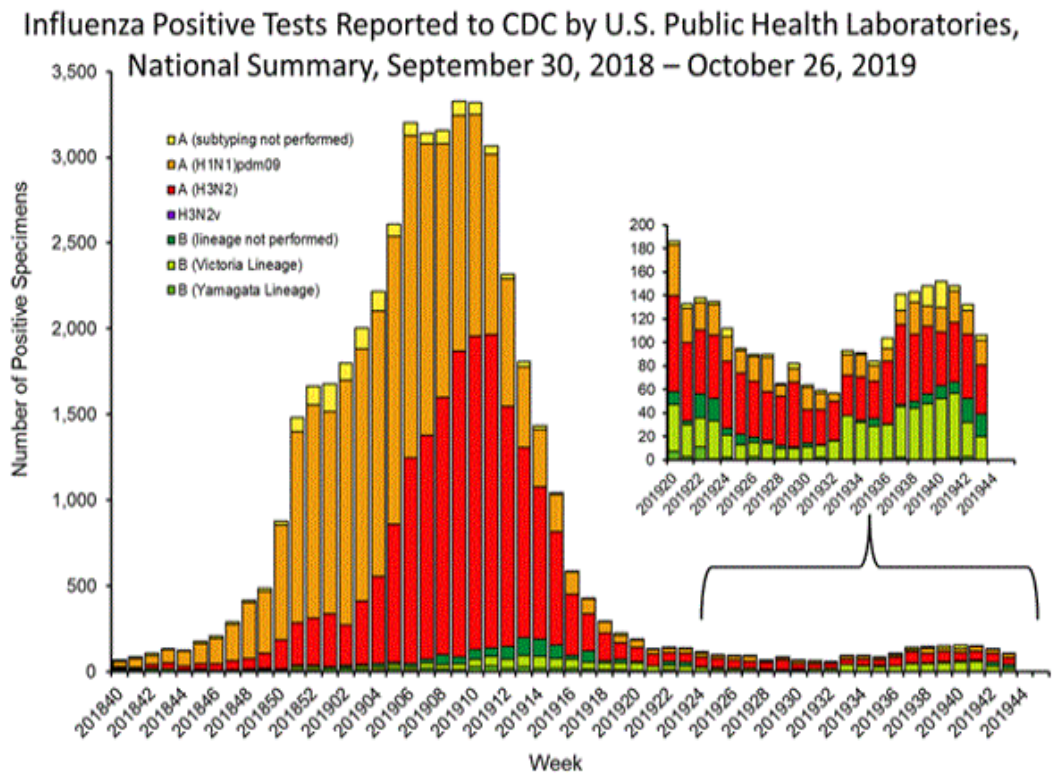


**Figure 3. Percent of Absenteeism Due to All Causes and ILI, Denton County Schools\*, 2019- 2020 Season**

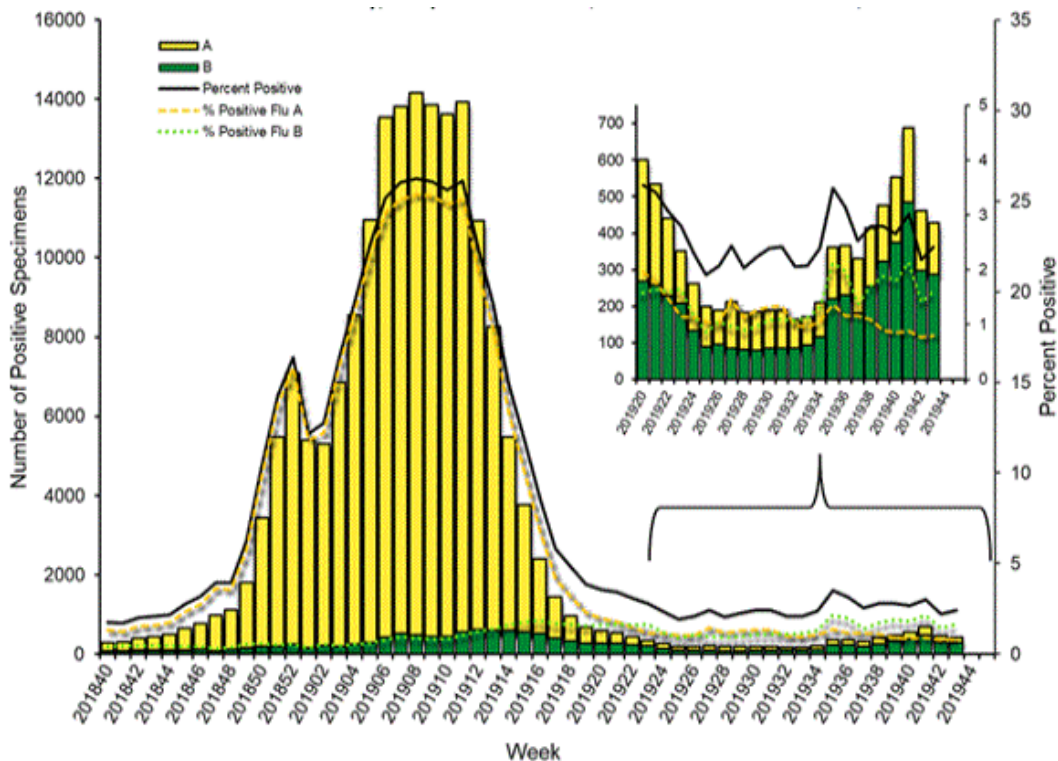


\*During week 43, 4 Denton County Independent School Districts reported data to Denton County Public Health, which included a total of 13,213 students.

**Figure 4. Influenza Positive Tests Reported to CDC by U.S. Public Health Laboratories, National Summary, September 30, 2018 - October 26, 2019**



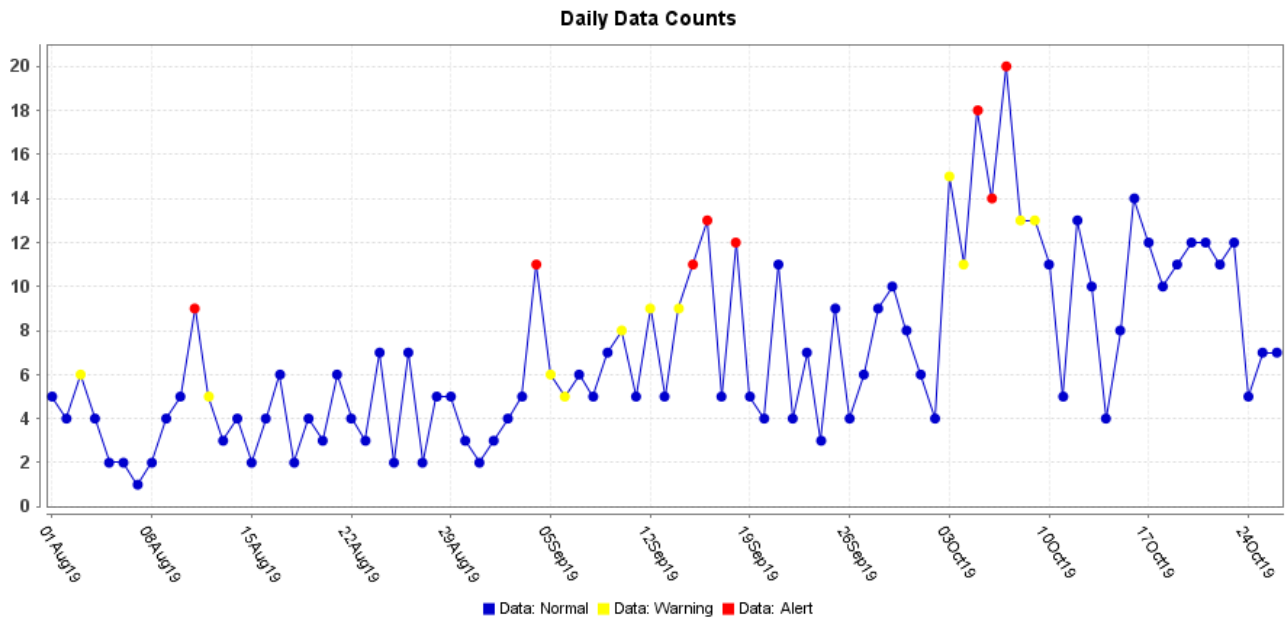
**Figure 5. Influenza Positive Tests Reported to CDC by U.S. Clinical Laboratories, National Summary, September 30, 2018 - October 26, 2019**



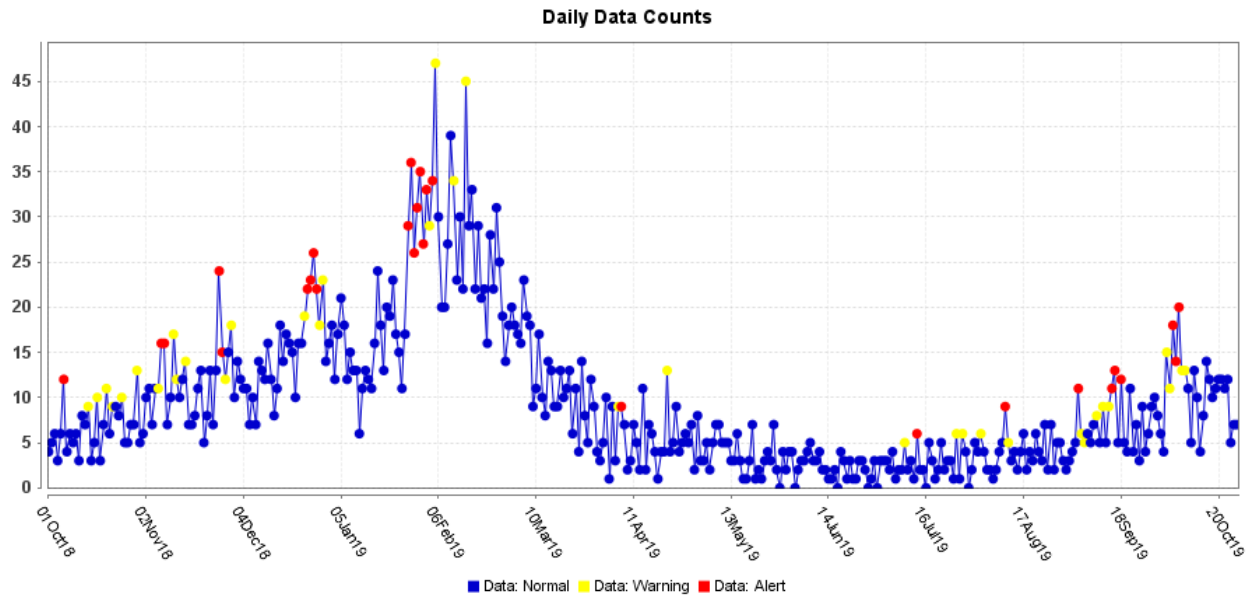
**Figure 6. U.S. Virologic Surveillance, Week 43**

	Week 43	Data Cumulative since September 29, 2019 (week 40)
No. of specimens tested	17,720	82,444
No. of positive specimens (%)	428 (2.4%)	2,130 (2.6%)
<i>Positive specimens by type</i>		
Influenza A	141 (32.9%)	685 (32.2%)
Influenza B	287 (67.1%)	1,445 (67.8%)

**Figure 7. ESSENCE Syndromic Surveillance for Influenza-like Illness: Denton County, August 1, 2019- October 26, 2019**

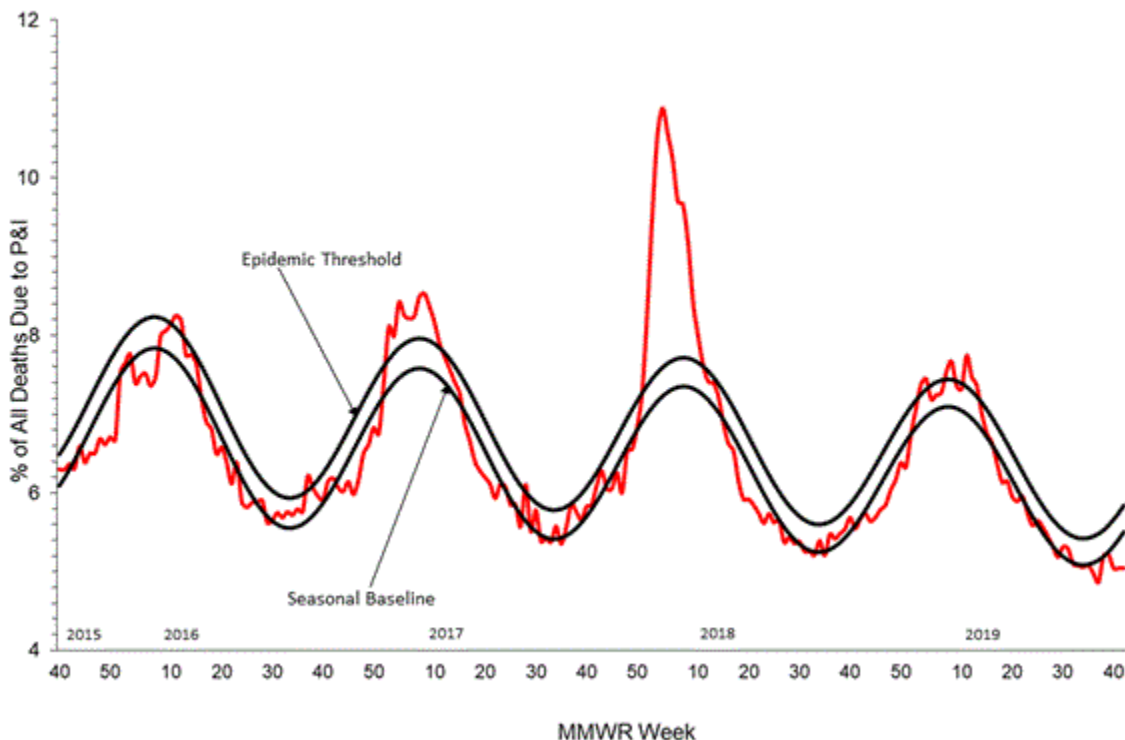


**Figure 8. ESSENCE Syndromic Surveillance for Influenza-like Illness: Denton County, October 1, 2018 – October 26, 2019**

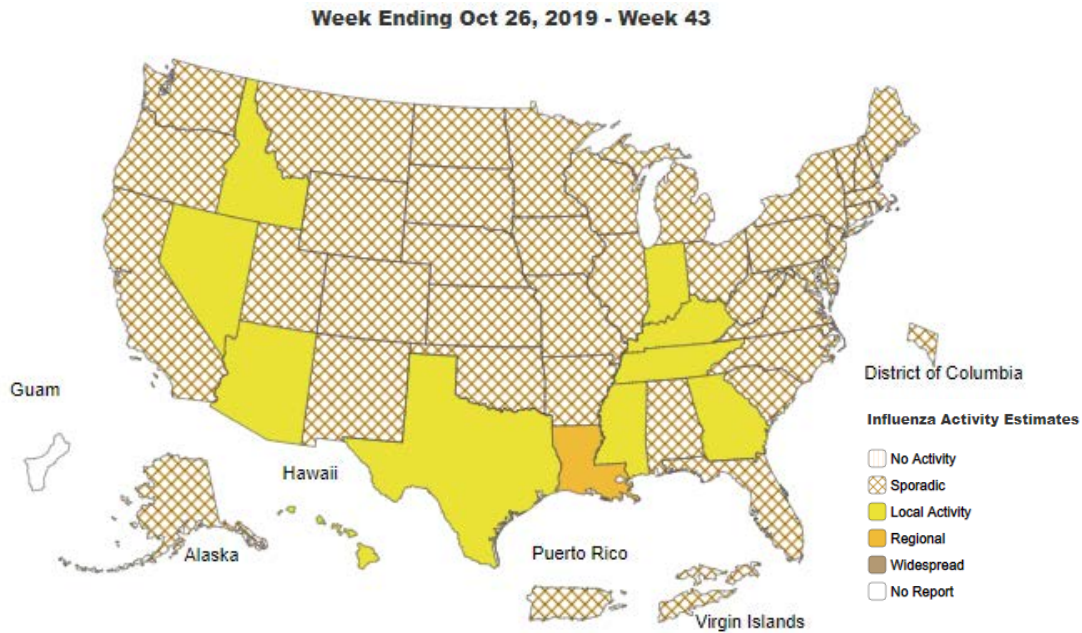


Data obtained from hospitals participating in the Electronic Surveillance System for the Early Notification of Community-based Epidemics (ESSENCE) from October 2017 through the present. Depicted are the numbers of persons presenting to Emergency Departments according to patient location (Denton region) with self-reported chief complaints of influenza-like illness.

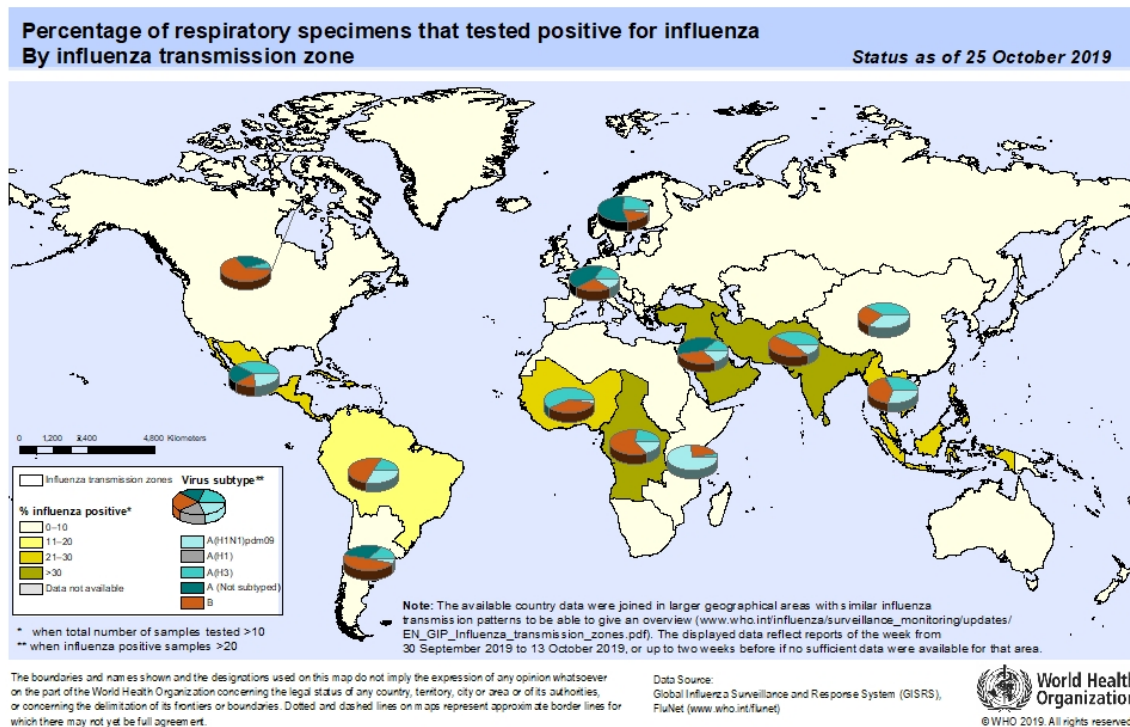
**Figure 9. Pneumonia and Influenza Mortality from the National Center for Health Statistics Mortality Surveillance System: Week ending October 19, 2019**



**Figure 10. Weekly Influenza Activity Estimates Reported by State and Territorial Epidemiologists: Week 43 – Week Ending October 26, 2019**



**Figure 11. Percentage of Respiratory Specimens that tested Positive for Influenza: WHO, based on data up to October 25, 2019**



**Please send inquiries to Lily Metzler, MPH – Epidemiologist  
Denton County Public Health at [Lily.Metzler@dentoncounty.com](mailto:Lily.Metzler@dentoncounty.com)**