

**Denton County Public Health**  
**2019 – 2020 Influenza Surveillance Program**  
**CDC Week 47, Week Ending November 23, 2019**



**Epidemiologic Overview**

**Denton County**

- High influenza activity was reported in Denton County for week 47.
- 173 positive influenza tests (11 Flu A and 162 Flu B) and 1 hospitalization was reported by Denton County sentinel providers for week 47.
- Syndromic surveillance for influenza-like illness (ILI) in Denton County increased for week 47 when compared to the previous week.
- 1.6% of the total reported school population was absent due to ILI in week 47.

**Texas**

- Influenza activity in the state of Texas was reported as high for week 47.
- The percentage of visits for ILI as reported by ILINet providers increased to 7.19% in week 47 compared to the previous week.
- The percentage of specimens testing positive for influenza in Texas increased to 18.75% in week 47 compared to the previous week.

**US**

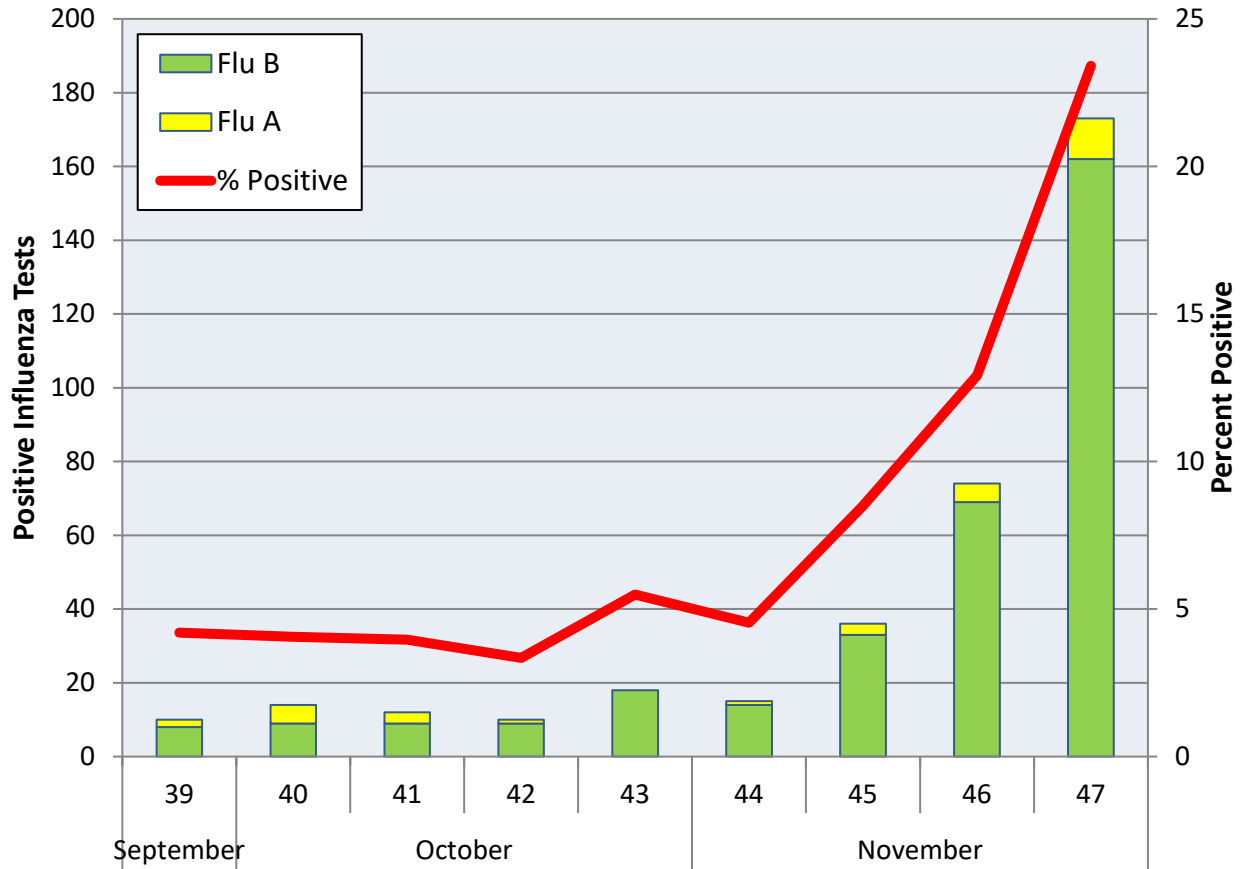
- The proportion of outpatient visits for influenza-like illness (ILI) was 2.9%, which is above the national baseline of 2.4%.
- The geographic spread of influenza in 10 states was reported as widespread; 14 states was reported as regional; 19 states was reported as local; and 7 states was reported as sporadic.
- The percentage of specimens testing positive for influenza in the US was 8.0%.
- The proportion of deaths attributed to pneumonia and influenza (P&I) from the National Center for Health Statistics Mortality Surveillance System for week 46 was 5.1%. This percentage is below the epidemic threshold of 6.3% for week 46.

**Figure 1. Influenza Surveillance Summary: Denton County Hospitals and Providers**

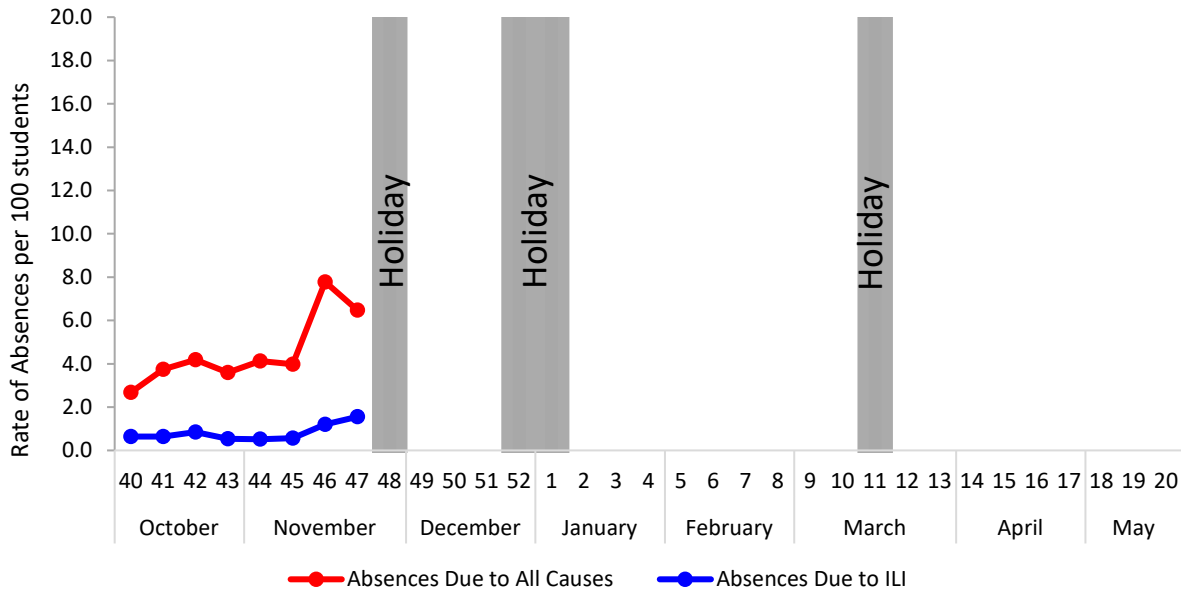
Week Ending	10/19/19	10/26/19	11/2/19	11/9/19	11/16/19	11/23/19	9/28/19 - Present
<b>CDC Week</b>	42	43	44	45	46	47	
<b>Influenza Tests Performed Weekly</b>	299	328	331	424	573	739	3580
<b>Total Positive Influenza Tests</b>	10	18	15	36	74	173	362
<b>Percent Positive Influenza Tests*</b>	3.34%	5.49%	4.53%	8.49%	12.91%	23.41%	
<b>Positive A Influenza</b>	1	0	1	3	5	11	31
<b>Positive B Influenza</b>	9	18	14	33	69	162	331
<b>Non-differentiated Influenza</b>	0	0	0	0	0	0	0
<b>Influenza Hospitalizations</b>	0	4	0	3	1	1	19
<b>Influenza-associated Pediatric Deaths</b>	0	0	0	0	0	0	0
<b>Influenza-associated Adult Deaths</b>	0	0	0	0	0	0	0

\* Percent positive tests only includes positive tests from providers reporting number of tests performed weekly

**Figure 2. Influenza Positive Tests and Percent Positive, Denton County Hospitals and Providers, 2019-2020 Season**

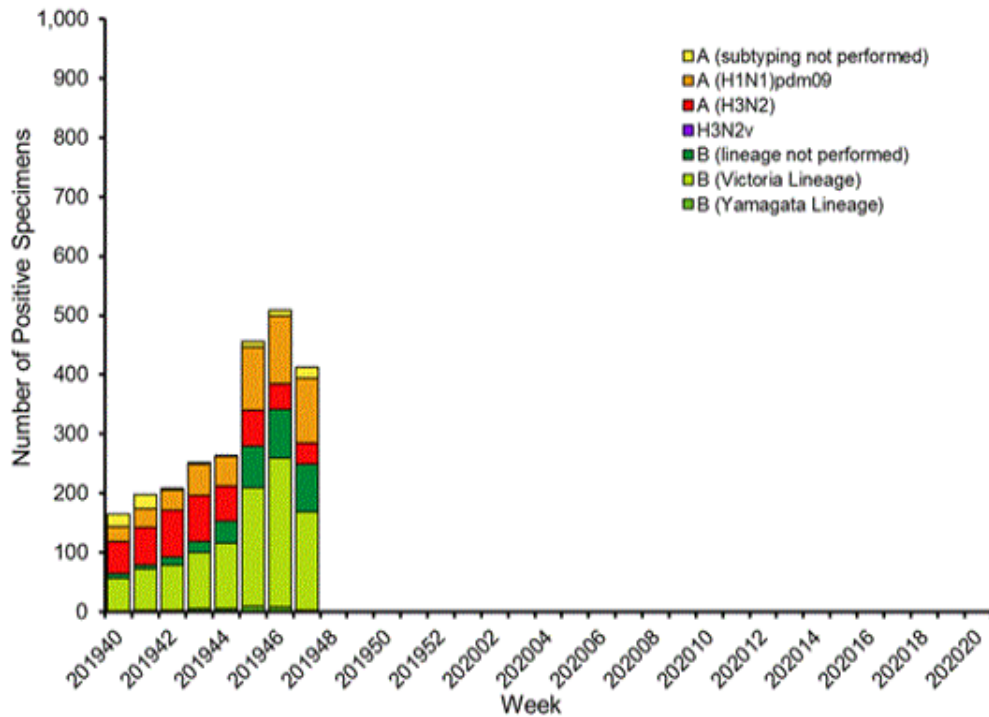


**Figure 3. Percent of Absenteeism Due to All Causes and ILI, Denton County Schools\*, 2019- 2020 Season**

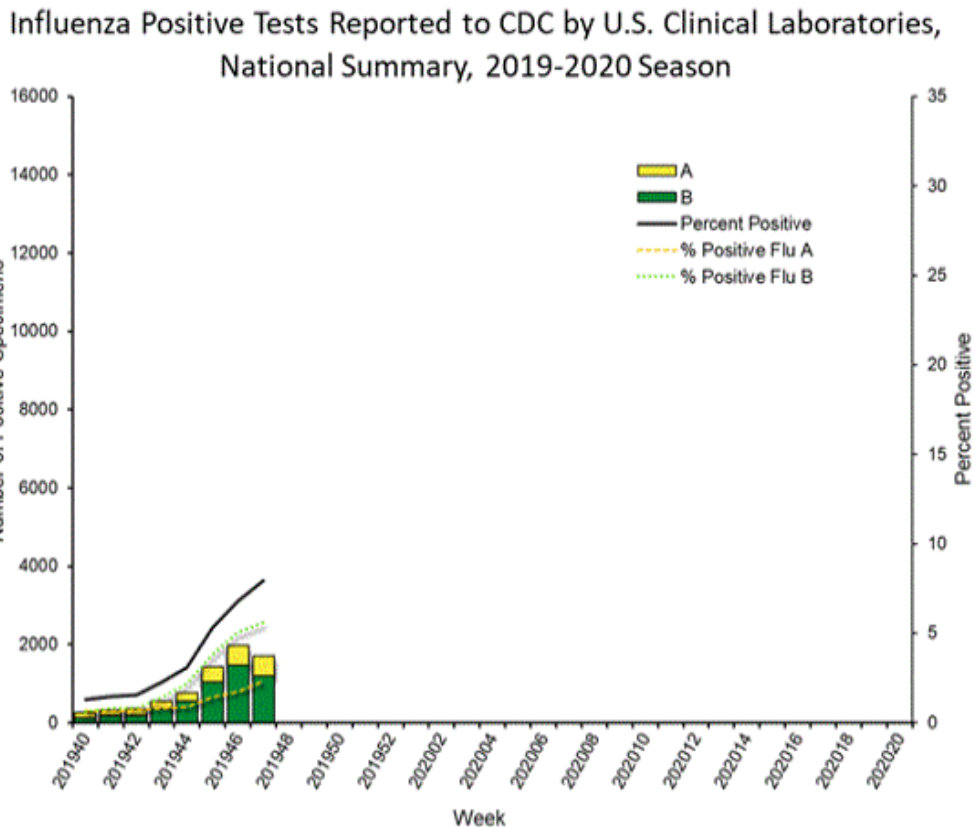


\*During week 47, 4 Denton County Independent School Districts reported data to Denton County Public Health, which included a total of 16,787 students.

**Figure 4. Influenza Positive Tests Reported to CDC by U.S. Public Health Laboratories, National Summary, September 29, 2019 – November 23, 2019**



**Figure 5. Influenza Positive Tests Reported to CDC by U.S. Clinical Laboratories, National Summary, September 29, 2019 – November 23, 2019**



**Figure 6. Antigenic Characterization of Influenza Isolates, Since September 29, 2019**

Influenza A (H1N1)	2 of 2 (100%) – A/Brisbane/02/2018 (H1N1)pdm09 -like
Influenza A (H3N2)	7 of 8 (87.5%) – A/Kansas/14/2017 (H3N2)-like
Influenza B (Victoria Lineage)	7 of 11 (63.6%) – B/Colorado/06/2017-like
Influenza B (Yamagata Lineage)	Antigenic Characterization is pending

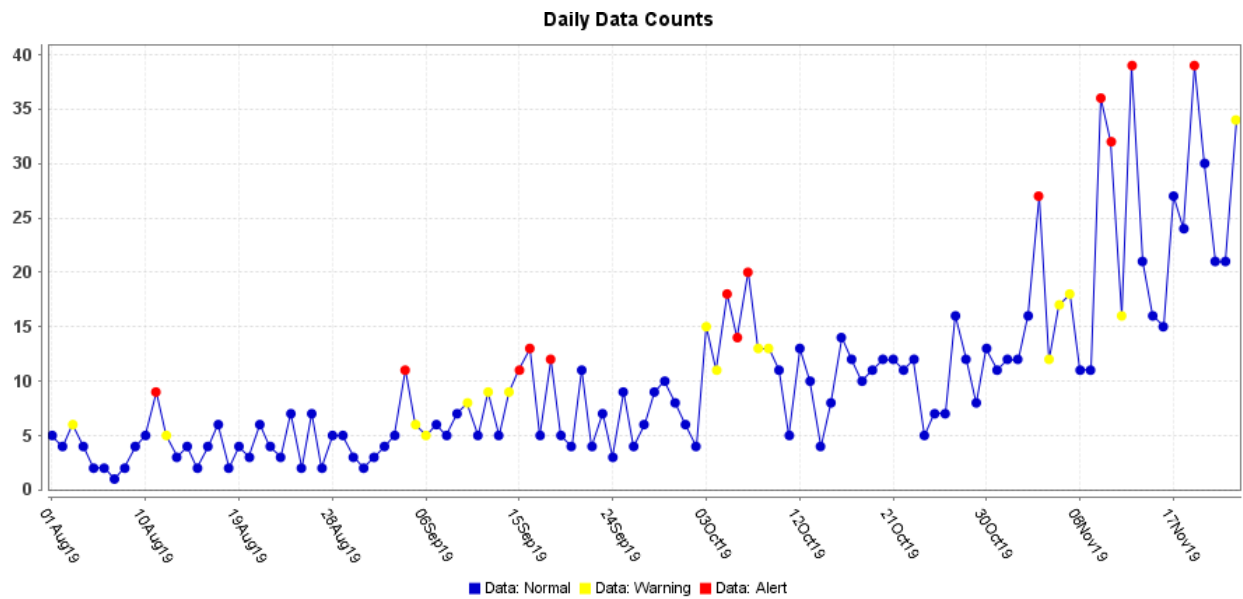
**2019-2020 Influenza Vaccine Composition, Northern Hemisphere:**

- A/Brisbane/02/2018 (H1N1)pdm09-like
- A/Kansas/14/2017(H3N2)-like
- B/Colorado/06/2017-like
- B/Phuket/3073/2013-like

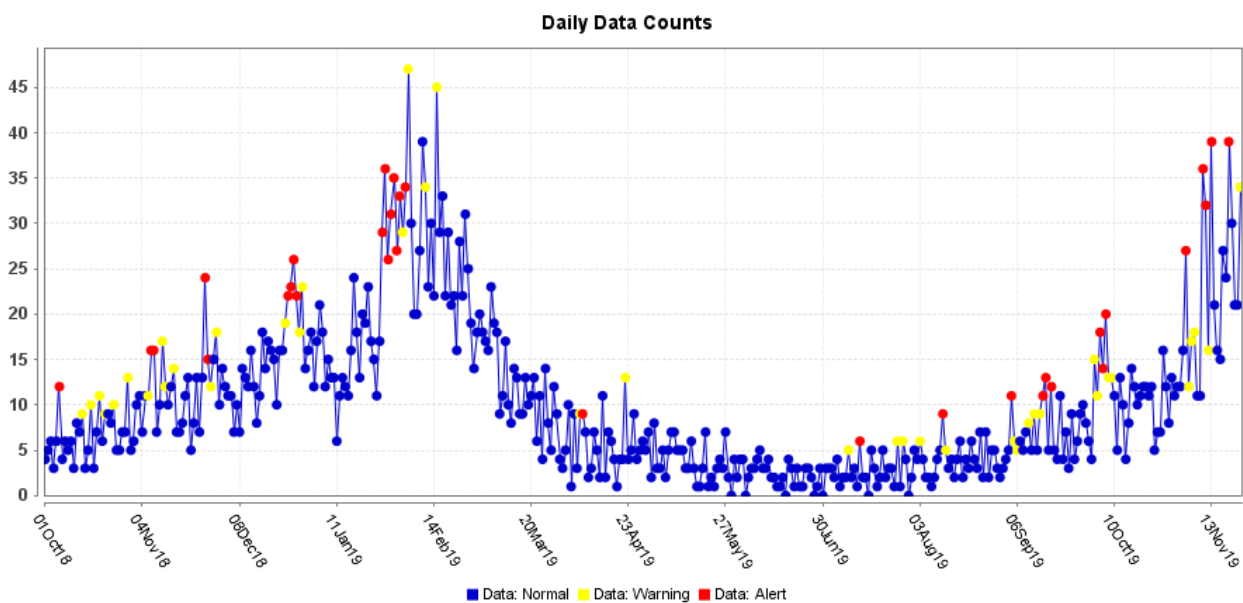
**Figure 7. U.S. Virologic Surveillance, Week 47**

	Week 47	Data Cumulative since September 29, 2019 (week 40)
No. of specimens tested	21,367	190,649
No. of positive specimens (%)	1,702 (8.0%)	7,361 (3.9%)
<i>Positive specimens by type</i>		
Influenza A	504 (29.6%)	2,261 (30.7%)
Influenza B	1,198 (70.4%)	5,100 (69.3%)

**Figure 8. ESSENCE Syndromic Surveillance for Influenza-like Illness: Denton County, August 1, 2019- November 23, 2019**

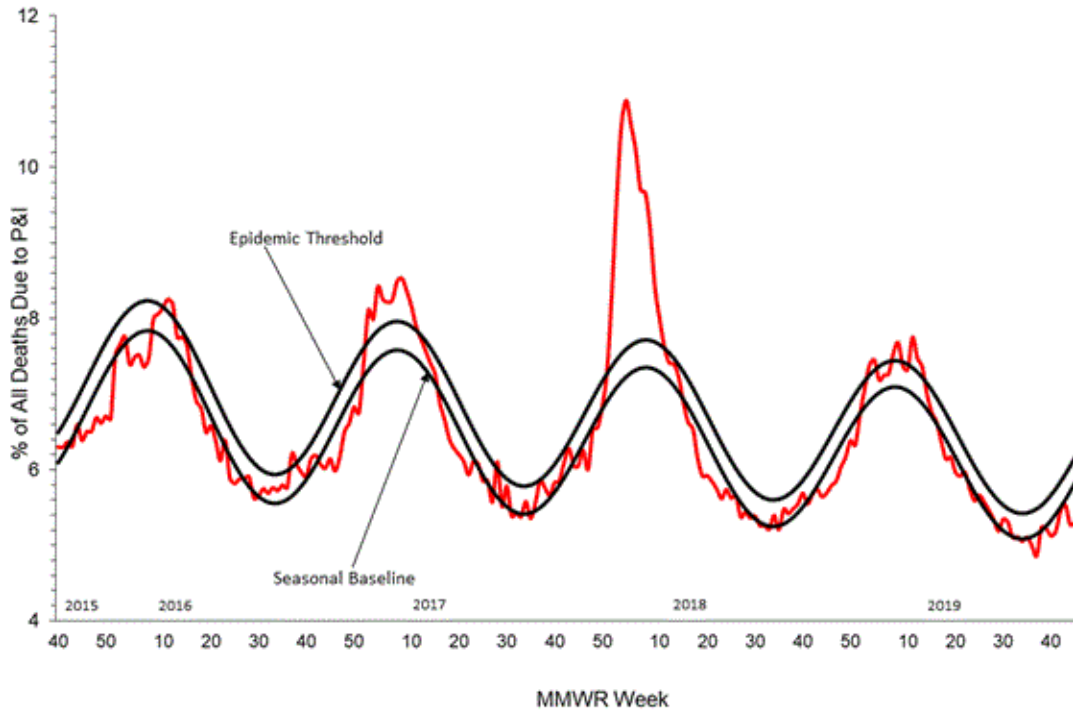


**Figure 9. ESSENCE Syndromic Surveillance for Influenza-like Illness: Denton County, October 1, 2018 – November 23, 2019**

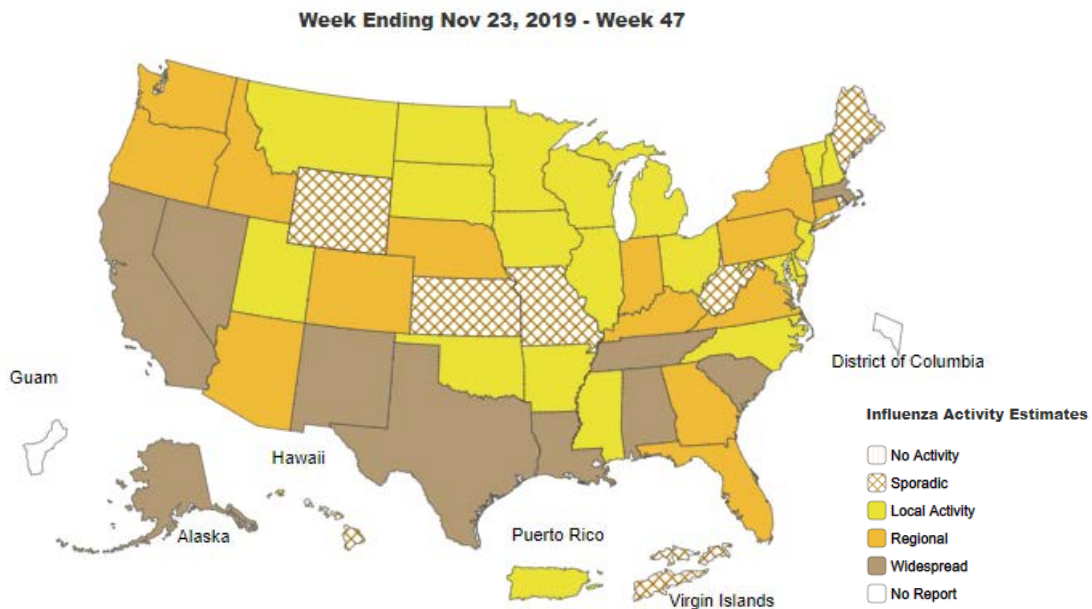


Data obtained from hospitals participating in the Electronic Surveillance System for the Early Notification of Community-based Epidemics (ESSENCE) from October 2018 through the present. Depicted are the numbers of persons presenting to Emergency Departments according to patient location (Denton region) with self-reported chief complaints of influenza-like illness.

**Figure 10. Pneumonia and Influenza Mortality from the National Center for Health Statistics Mortality Surveillance System: Week ending November 16, 2019**



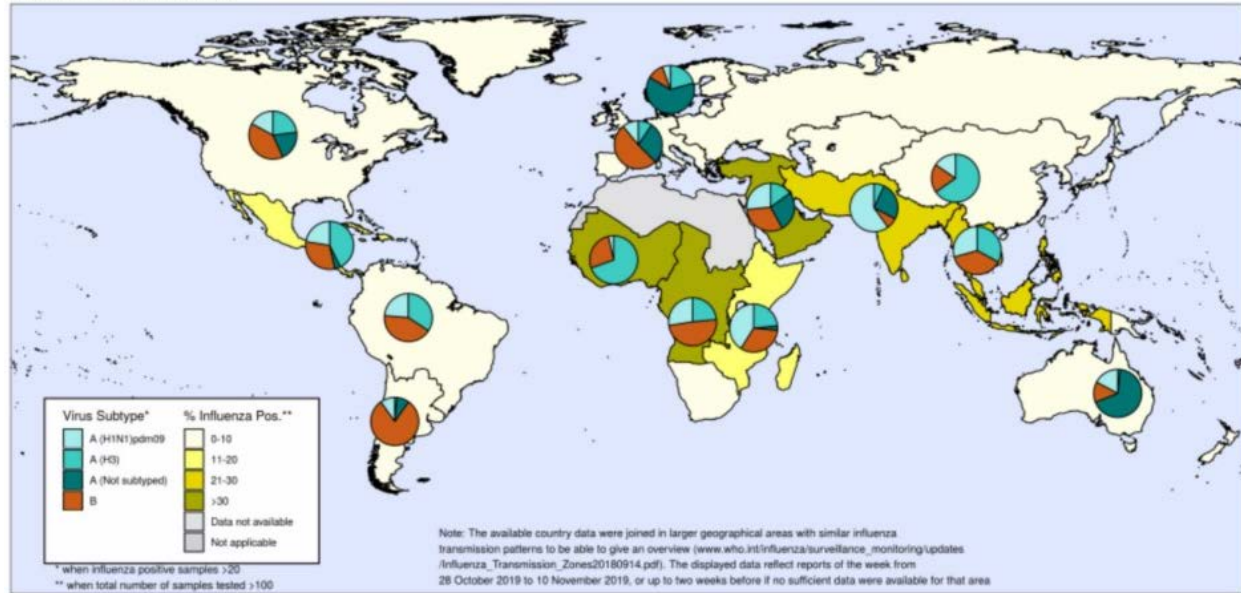
**Figure 11. Weekly Influenza Activity Estimates Reported by State and Territorial Epidemiologists: Week 47 – Week Ending November 23, 2019**



**Figure 12. Percentage of Respiratory Specimens that tested Positive for Influenza: WHO, based on data through November 22, 2019**

Percentage of respiratory specimens that tested positive for influenza  
By influenza transmission zone

Map generated on 22 November 2019



The boundaries and names shown and the designations used on this map do not imply the expression of any opinion whatsoever on the part of the World Health Organization concerning the legal status of any country, territory, city or area or of its authorities, or concerning the delimitation of its frontiers or boundaries. Dotted and dashed lines on maps represent approximate border lines for which there may not yet be full agreement.

Data source: Global Influenza Surveillance and Response System (GISRS), FluNet ([www.who.int/flu-net](http://www.who.int/flu-net))  
Copyright WHO 2019. All rights reserved.



Please send inquiries to Lily Metzler, MPH – Epidemiologist  
Denton County Public Health at [Lily.Metzler@dentoncounty.com](mailto:Lily.Metzler@dentoncounty.com)