

# Denton County Public Health

## 2019 – 2020 Influenza Surveillance Program

### CDC Week 46, Week Ending November 16, 2019



## Epidemiologic Overview

### Denton County

- Moderate influenza activity was reported in Denton County for week 46.
- 74 positive influenza tests (5 Flu A and 69 Flu B) and 1 hospitalization was reported by Denton County sentinel providers for week 46.
- Syndromic surveillance for influenza-like illness (ILI) in Denton County increased for week 46 when compared to the previous week.
- 1.2% of the total reported school population was absent due to ILI in week 46.

### Texas

- Influenza activity in the state of Texas increased to high for week 46.
- The percentage of visits for ILI as reported by ILINet providers decreased to 4.75% in week 46 compared to the previous week.
- The percentage of specimens testing positive for influenza in Texas decreased to 9.60% in week 46 compared to the previous week.

### US

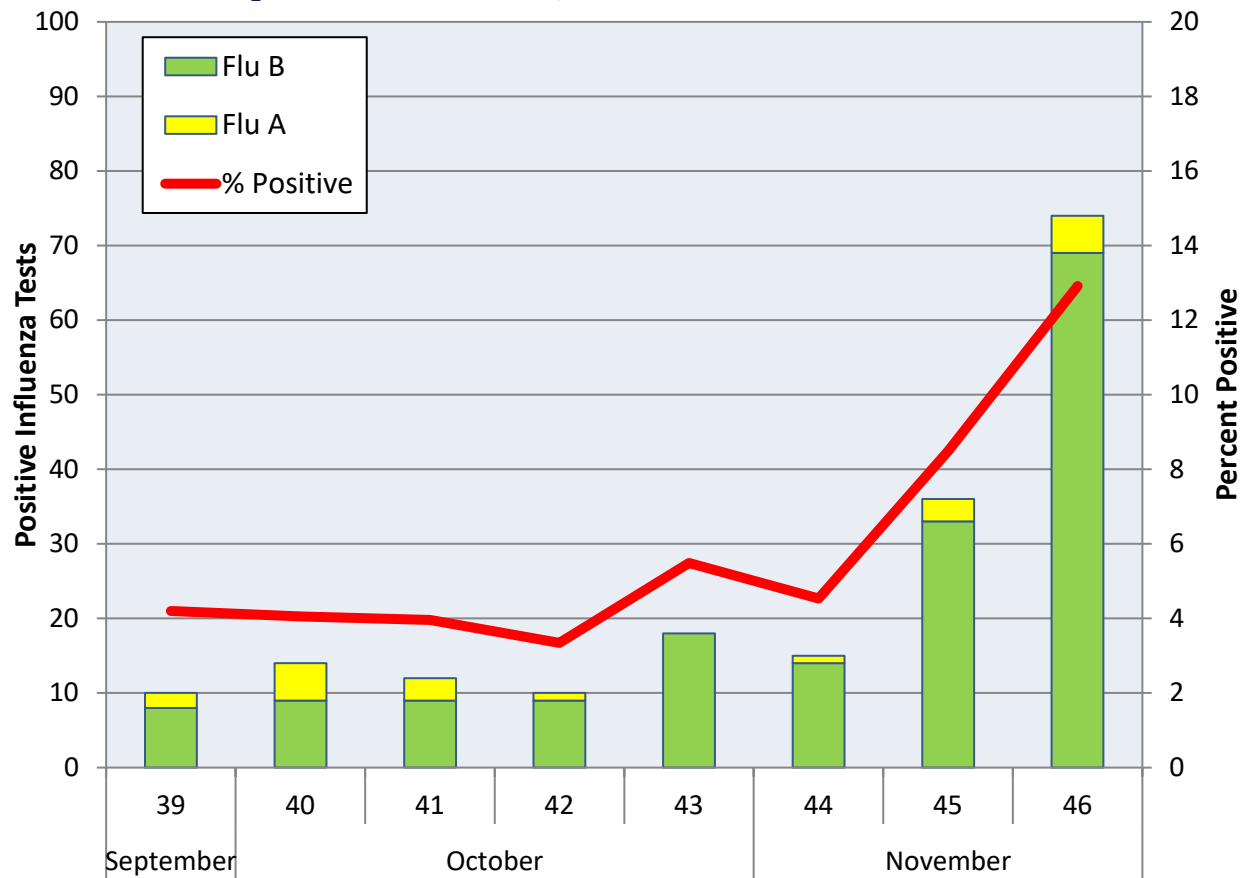
- The proportion of outpatient visits for influenza-like illness (ILI) was 2.5%, which is above the national baseline of 2.4%.
- The geographic spread of influenza in 6 states was reported as widespread; 9 states was reported as regional; 23 states was reported as local; 11 states was reported as sporadic; and 1 state reported no activity.
- The percentage of specimens testing positive for influenza in the US was 7.3%.
- The proportion of deaths attributed to pneumonia and influenza (P&I) from the National Center for Health Statistics Mortality Surveillance System for week 45 was 5.2%. This percentage is below the epidemic threshold of 6.2% for week 45.

**Figure 1. Influenza Surveillance Summary: Denton County Hospitals and Providers**

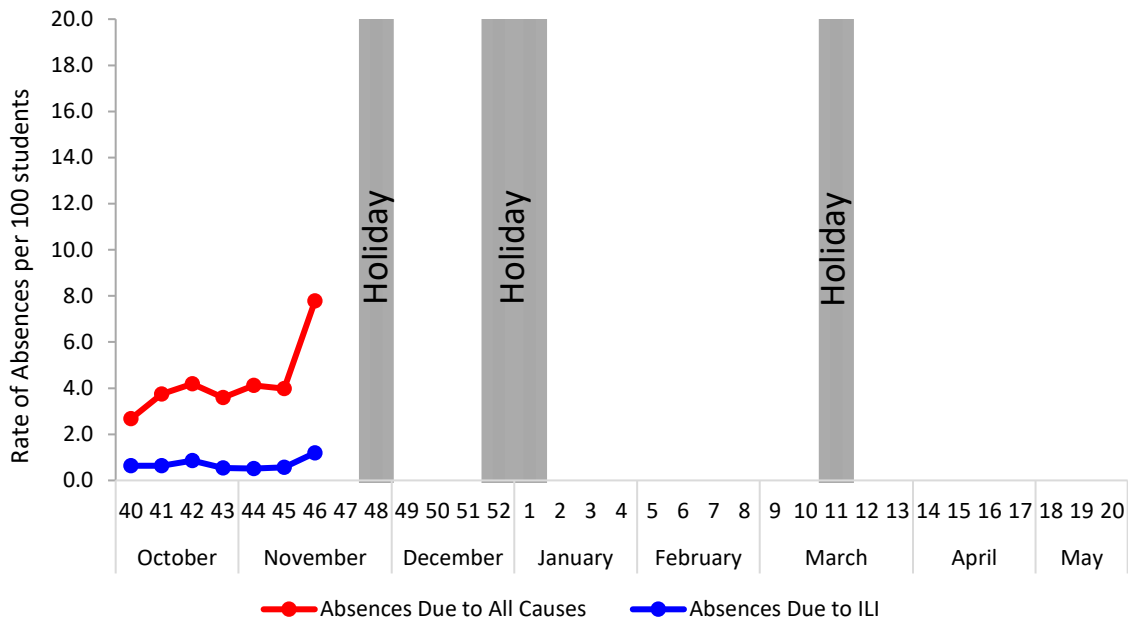
Week Ending	10/12/19	10/19/19	10/26/19	11/2/19	11/9/19	11/16/19	9/28/19 - Present
<b>CDC Week</b>	41	42	43	44	45	46	
<b>Influenza Tests Performed Weekly</b>	303	299	328	331	424	573	2841
<b>Total Positive Influenza Tests</b>	12	10	18	15	36	74	189
<b>Percent Positive Influenza Tests*</b>	3.96%	3.34%	5.49%	4.53%	8.49%	12.91%	
<b>Positive A Influenza</b>	3	1	0	1	3	5	20
<b>Positive B Influenza</b>	9	9	18	14	33	69	169
<b>Non-differentiated Influenza</b>	0	0	0	0	0	0	0
<b>Influenza Hospitalizations</b>	4	0	4	0	3	1	18
<b>Influenza-associated Pediatric Deaths</b>	0	0	0	0	0	0	0
<b>Influenza-associated Adult Deaths</b>	0	0	0	0	0	0	0

\* Percent positive tests only includes positive tests from providers reporting number of tests performed weekly

**Figure 2. Influenza Positive Tests and Percent Positive, Denton County Hospitals and Providers, 2019-2020 Season**

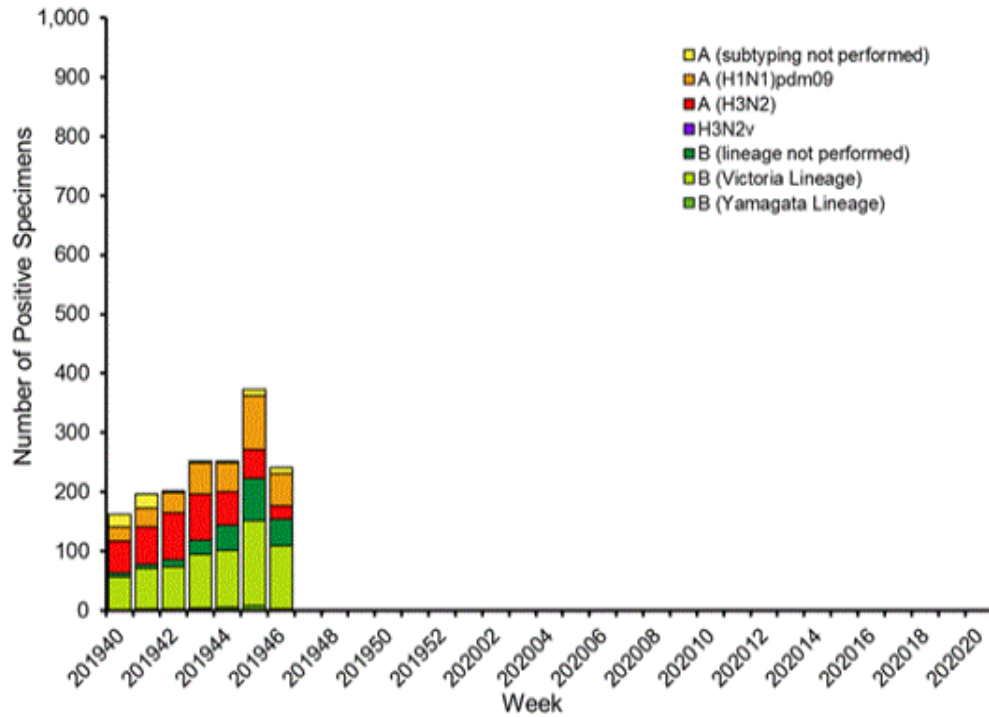


**Figure 3. Percent of Absenteeism Due to All Causes and ILI, Denton County Schools\*, 2019- 2020 Season**

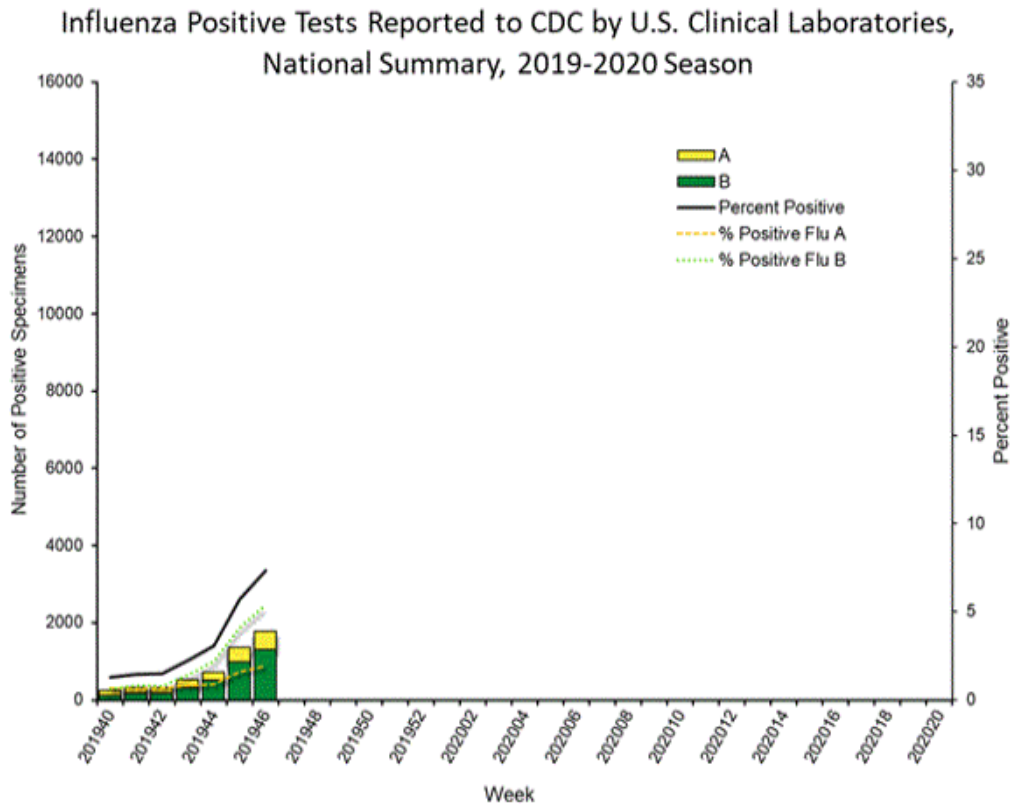


\*During week 46, 4 Denton County Independent School Districts reported data to Denton County Public Health, which included a total of 16,424 students.

**Figure 4. Influenza Positive Tests Reported to CDC by U.S. Public Health Laboratories, National Summary, September 29, 2019 – November 16, 2019**



**Figure 5. Influenza Positive Tests Reported to CDC by U.S. Clinical Laboratories, National Summary, September 29, 2019 – November 16, 2019**



**Figure 6. Antigenic Characterization of Influenza Isolates, Since September 29, 2019**

Influenza A (H1N1)	2 of 2 (100%) – A/Brisbane/02/2018 (H1N1)pdm09 -like
Influenza A (H3N2)	Antigenic Characterization is pending
Influenza B (Victoria Lineage)	7 of 11 (63.6%) – B/Colorado/06/2017-like
Influenza B (Yamagata Lineage)	Antigenic Characterization is pending

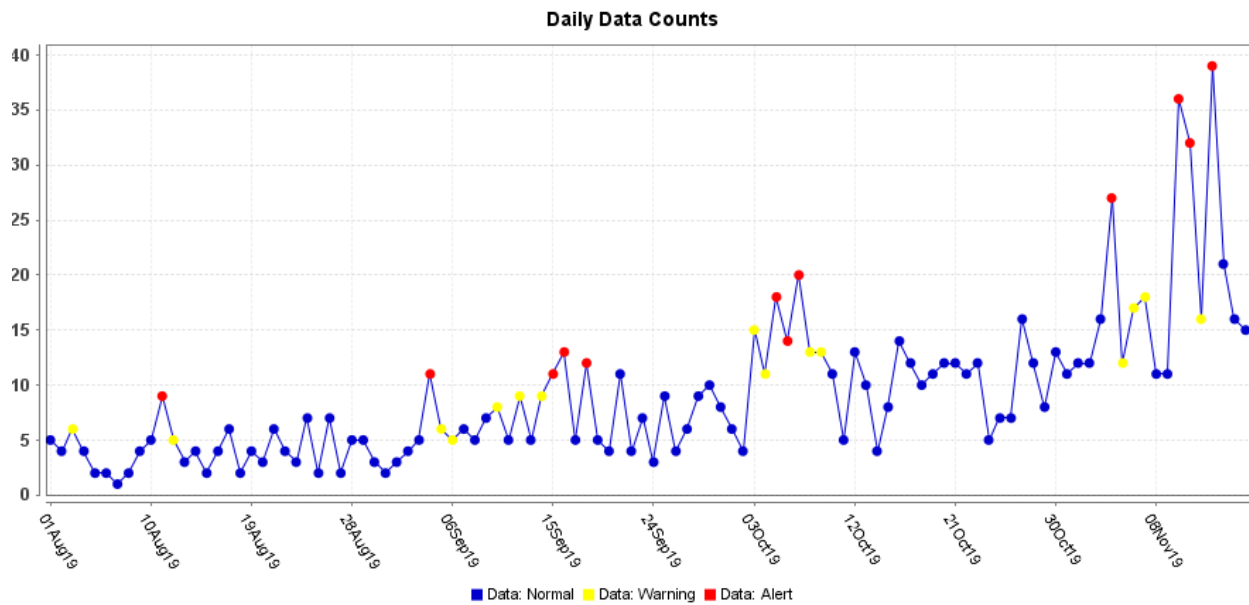
**2019-2020 Influenza Vaccine Composition, Northern Hemisphere:**

- A/Brisbane/02/2018 (H1N1)pdm09-like
- A/Kansas/14/2017(H3N2)-like
- B/Colorado/06/2017-like
- B/Phuket/3073/2013-like

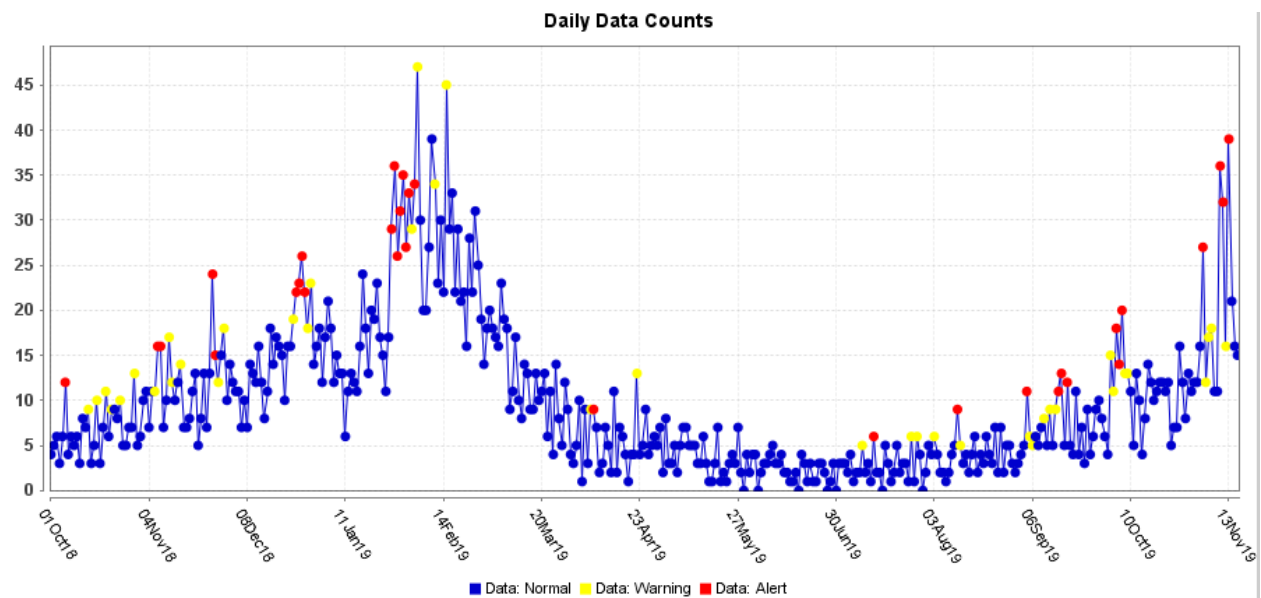
**Figure 7. U.S. Virologic Surveillance, Week 46**

	Week 46	Data Cumulative since September 29, 2019 (week 40)
No. of specimens tested	24,405	158,740
No. of positive specimens (%)	1,786 (7.3%)	5,299 (3.3%)
<i>Positive specimens by type</i>		
Influenza A	470 (26.3%)	1,681 (31.7%)
Influenza B	1,316 (73.7%)	3,618 (68.3%)

**Figure 8. ESSENCE Syndromic Surveillance for Influenza-like Illness: Denton County, August 1, 2019- November 16, 2019**

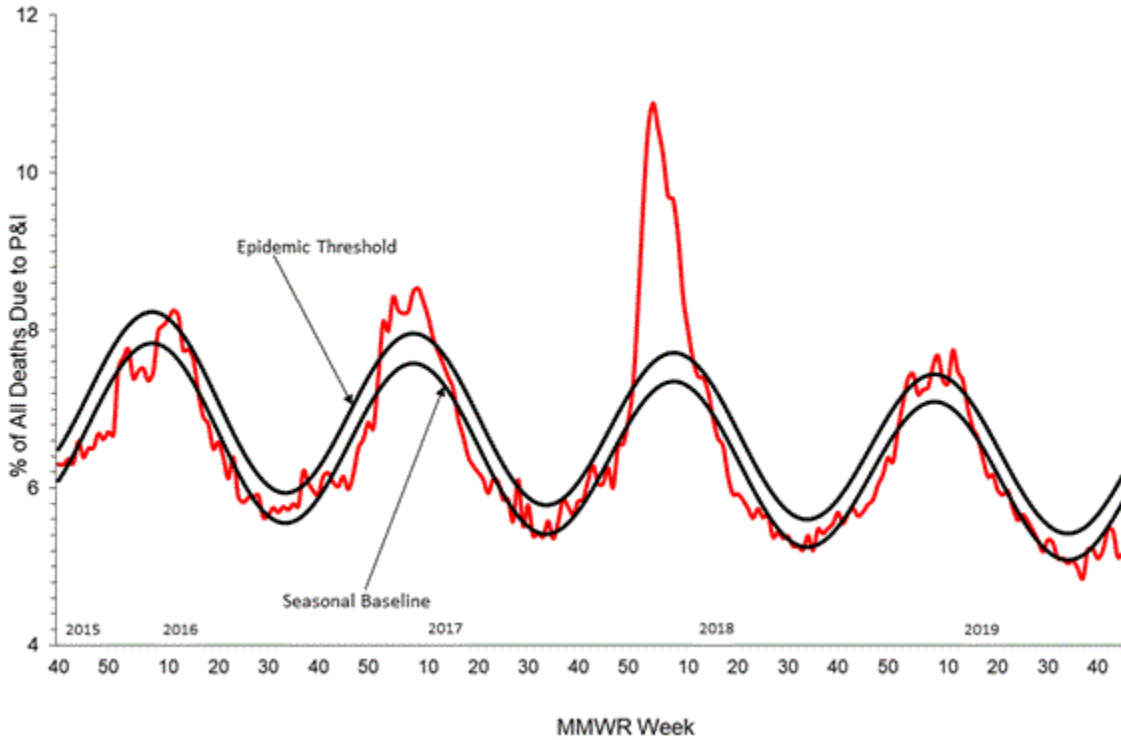


**Figure 9. ESSENCE Syndromic Surveillance for Influenza-like Illness: Denton County, October 1, 2018 – November 16, 2019**

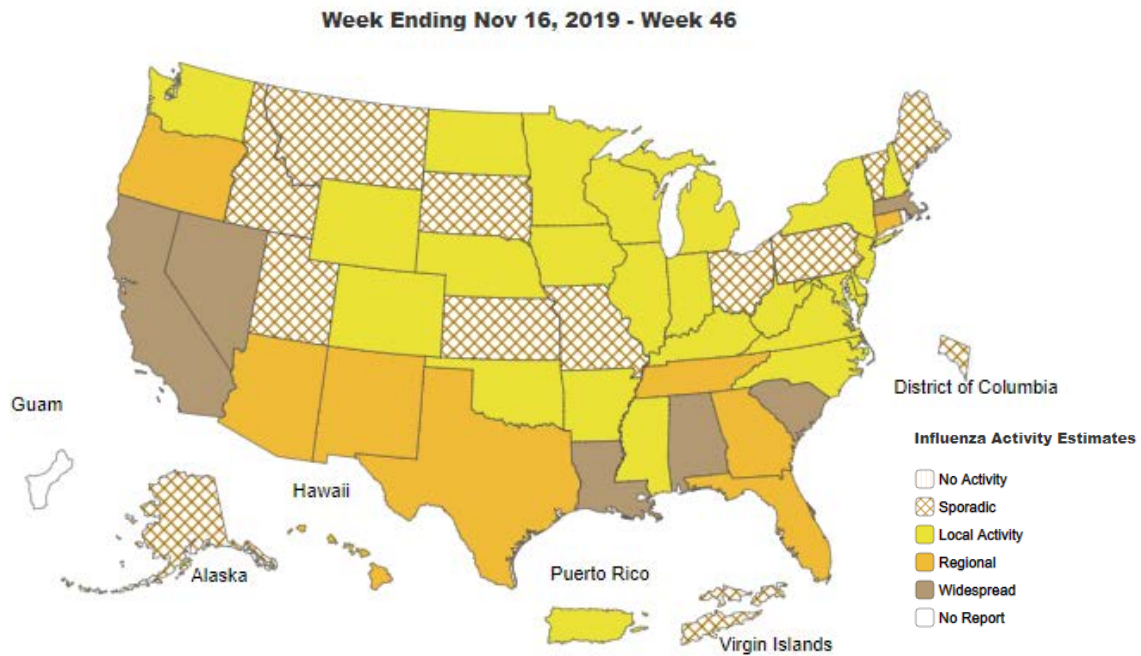


Data obtained from hospitals participating in the Electronic Surveillance System for the Early Notification of Community-based Epidemics (ESSENCE) from October 2018 through the present. Depicted are the numbers of persons presenting to Emergency Departments according to patient location (Denton region) with self-reported chief complaints of influenza-like illness.

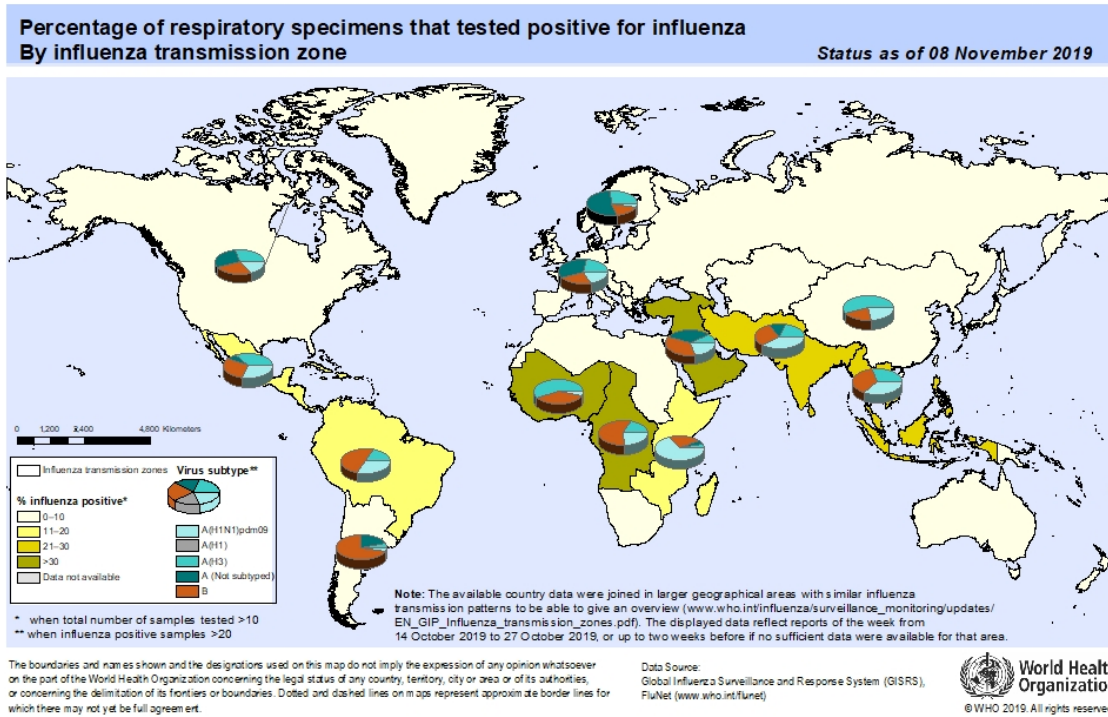
**Figure 10. Pneumonia and Influenza Mortality from the National Center for Health Statistics Mortality Surveillance System: Week ending November 9, 2019**



**Figure 11. Weekly Influenza Activity Estimates Reported by State and Territorial Epidemiologists: Week 46 – Week Ending November 16, 2019**



**Figure 12. Percentage of Respiratory Specimens that tested Positive for Influenza: WHO, based on data up to November 8, 2019**



Please send inquiries to Lily Metzler, MPH – Epidemiologist  
Denton County Public Health at [Lily.Metzler@dentoncounty.com](mailto:Lily.Metzler@dentoncounty.com)