

# Denton County Public Health

## 2019 – 2020 Influenza Surveillance Program

### CDC Week 45, Week Ending November 9, 2019



## Epidemiologic Overview

### Denton County

- Low influenza activity was reported in Denton County for week 45.
- 36 positive influenza tests (3 Flu A and 33 Flu B) and 3 hospitalizations were reported by Denton County sentinel providers for week 45.
- Syndromic surveillance for influenza-like illness (ILI) in Denton County increased for week 45 when compared to the previous week.
- 0.6% of the total reported school population was absent due to ILI in week 45.

### Texas

- Influenza activity in the state of Texas increased to moderate for week 45.
- The percentage of visits for ILI as reported by ILINet providers increased to 4.91% in week 45 compared to the previous week.
- Due to technical issues, data for the percentage of specimens testing positive for influenza in Texas during week 45 is not available.

### US

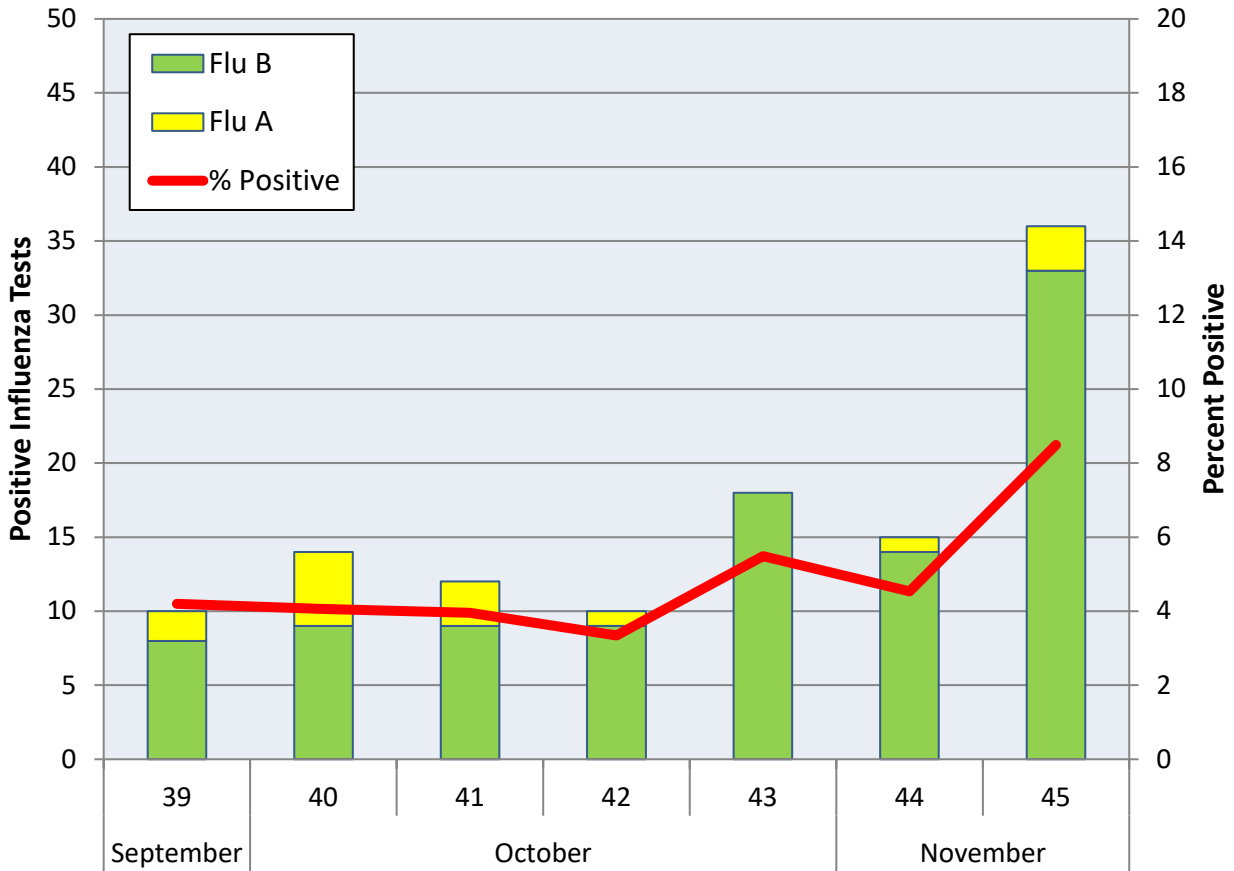
- The proportion of outpatient visits for influenza-like illness (ILI) was 2.3%, which is below the national baseline of 2.4%.
- The geographic spread of influenza in 3 states was reported as widespread; 7 states was reported as regional; 20 states was reported as local; 19 states was reported as sporadic; and 1 state reported no activity.
- Due to technical issues, data for the percentage of specimens testing positive for influenza in the US during week 45 is not available.
- The proportion of deaths attributed to pneumonia and influenza (P&I) from the National Center for Health Statistics Mortality Surveillance System for week 44 was 4.9%. This percentage is below the epidemic threshold of 6.0% for week 44.

**Figure 1. Influenza Surveillance Summary: Denton County Hospitals and Providers**

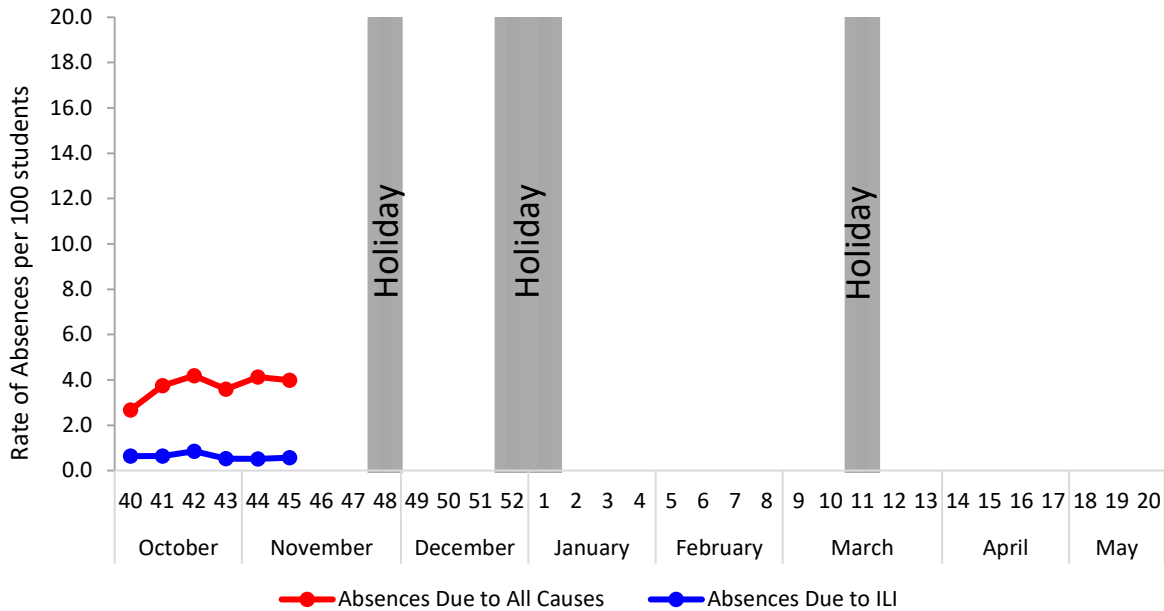
Week Ending	10/5/19	10/12/19	10/19/19	10/26/19	11/2/19	11/9/19	9/28/19 - Present
<b>CDC Week</b>	40	41	42	43	44	45	
<b>Influenza Tests Performed Weekly</b>	345	303	299	328	331	424	2268
<b>Total Positive Influenza Tests</b>	14	12	10	18	15	36	115
<b>Percent Positive Influenza Tests*</b>	4.05%	3.96%	3.34%	5.49%	4.53%	8.49%	
<b>Positive A Influenza</b>	5	3	1	0	1	3	15
<b>Positive B Influenza</b>	9	9	9	18	14	33	100
<b>Non-differentiated Influenza</b>	0	0	0	0	0	0	0
<b>Influenza Hospitalizations</b>	5	4	0	4	0	3	17
<b>Influenza-associated Pediatric Deaths</b>	0	0	0	0	0	0	0
<b>Influenza-associated Adult Deaths</b>	0	0	0	0	0	0	0

\* Percent positive tests only includes positive tests from providers reporting number of tests performed weekly

**Figure 2. Influenza Positive Tests and Percent Positive, Denton County Hospitals and Providers, 2019-2020 Season**

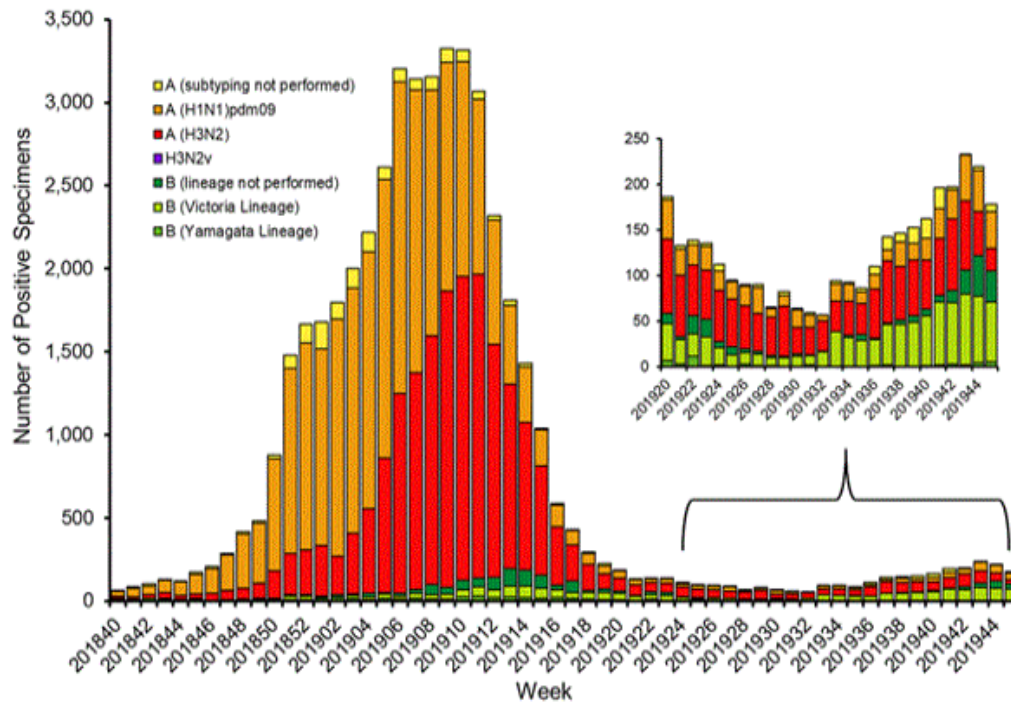


**Figure 3. Percent of Absenteeism Due to All Causes and ILI, Denton County Schools\*, 2019- 2020 Season**

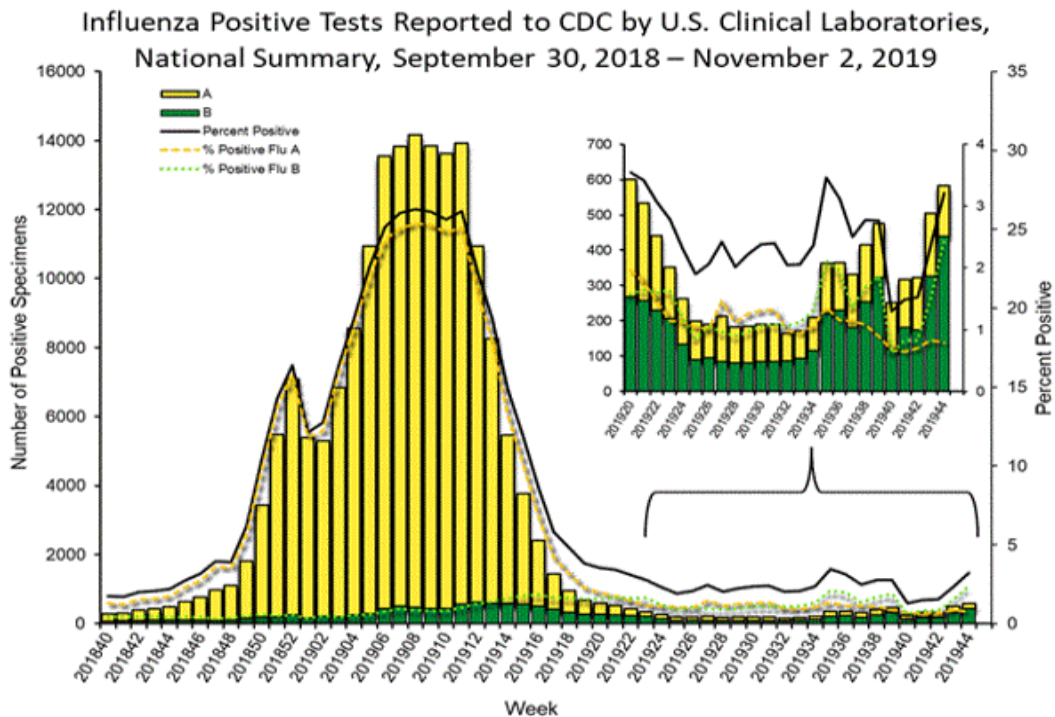


\*During week 45, 4 Denton County Independent School Districts reported data to Denton County Public Health, which included a total of 21,352 students.

**Figure 4. Influenza Positive Tests Reported to CDC by U.S. Public Health Laboratories, National Summary, September 30, 2018 – November 9, 2019**



**Figure 5. Influenza Positive Tests Reported to CDC by U.S. Clinical Laboratories, National Summary, September 30, 2018 – November 2, 2019\***



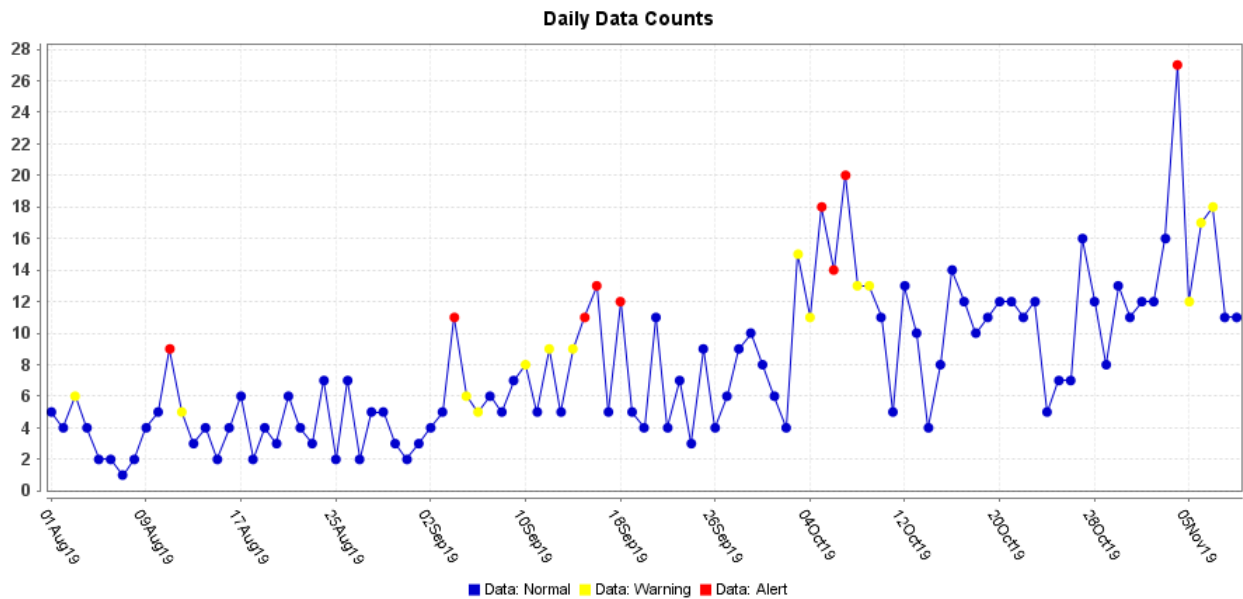
\*Due to technical issues with the National Respiratory and Enteric Virus Surveillance System (NREVSS) reporting platform, the clinical laboratory data are not available for week 45.

**Figure 6. U.S. Virologic Surveillance, Week 44\***

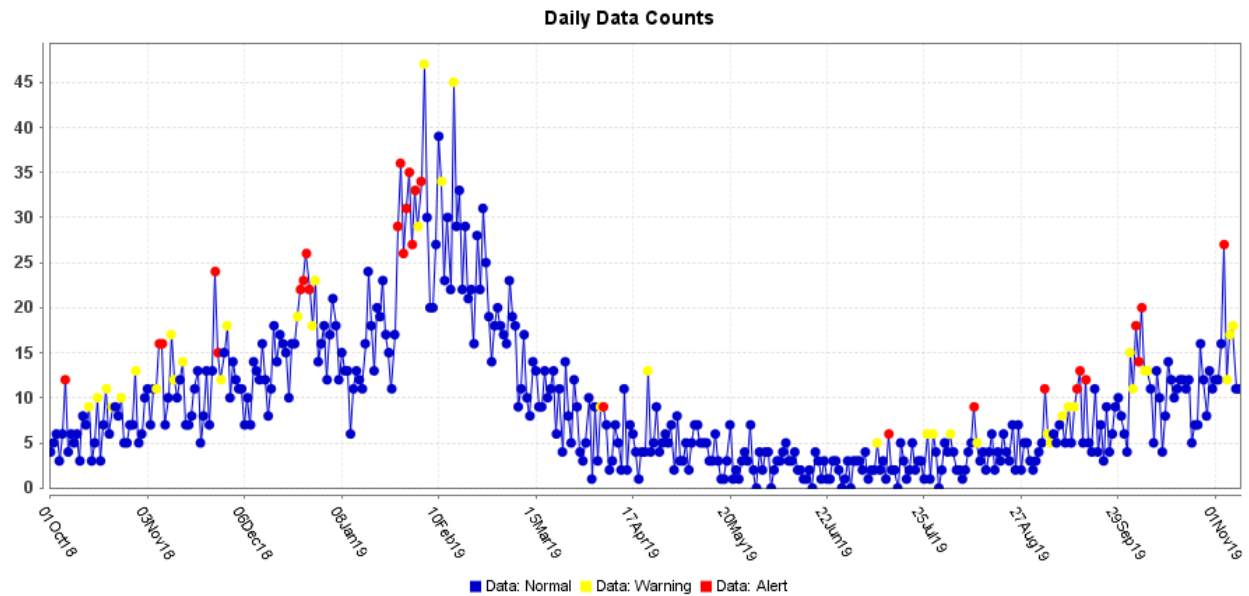
	Week 44	Data Cumulative since September 29, 2019 (week 40)
No. of specimens tested*	18,126	101,524
No. of positive specimens (%)	582 (3.2%)	1,978 (1.9%)
<i>Positive specimens by type</i>		
Influenza A	143 (24.6%)	738 (37.3%)
Influenza B	439 (75.4%)	1,240 (62.7%)

\*Due to technical issues with the National Respiratory and Enteric Virus Surveillance System (NREVSS) reporting platform, the clinical laboratory data are not available for week 45.

**Figure 7. ESSENCE Syndromic Surveillance for Influenza-like Illness: Denton County, August 1, 2019- November 9, 2019**

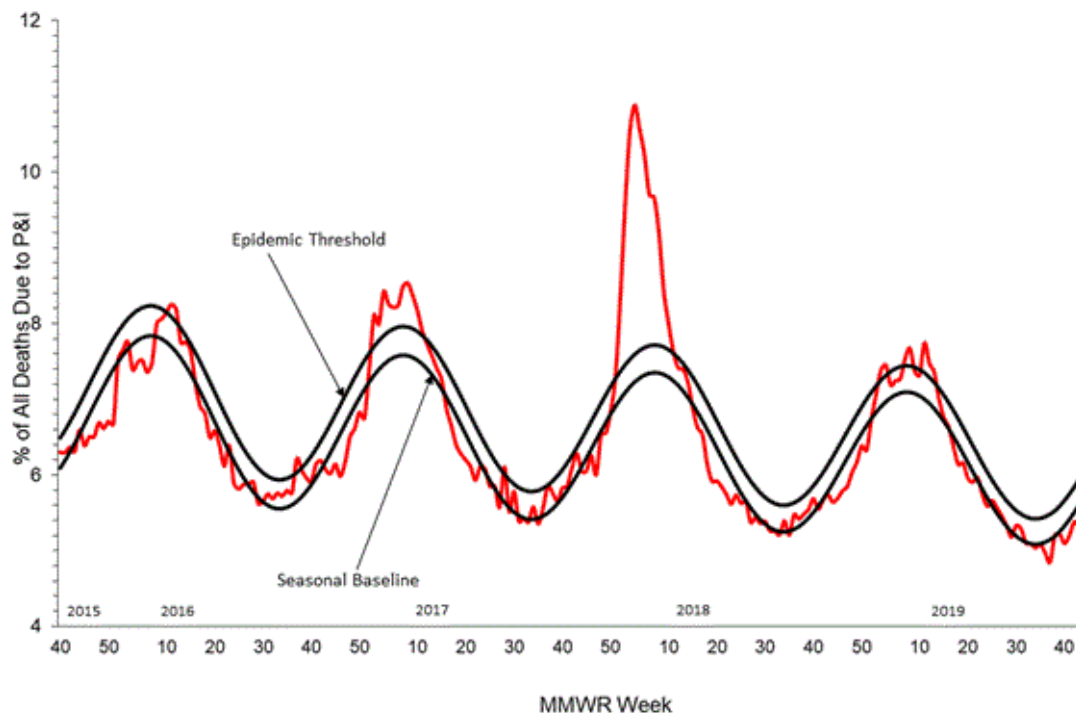


**Figure 8. ESSENCE Syndromic Surveillance for Influenza-like Illness: Denton County, October 1, 2018 – November 9, 2019**

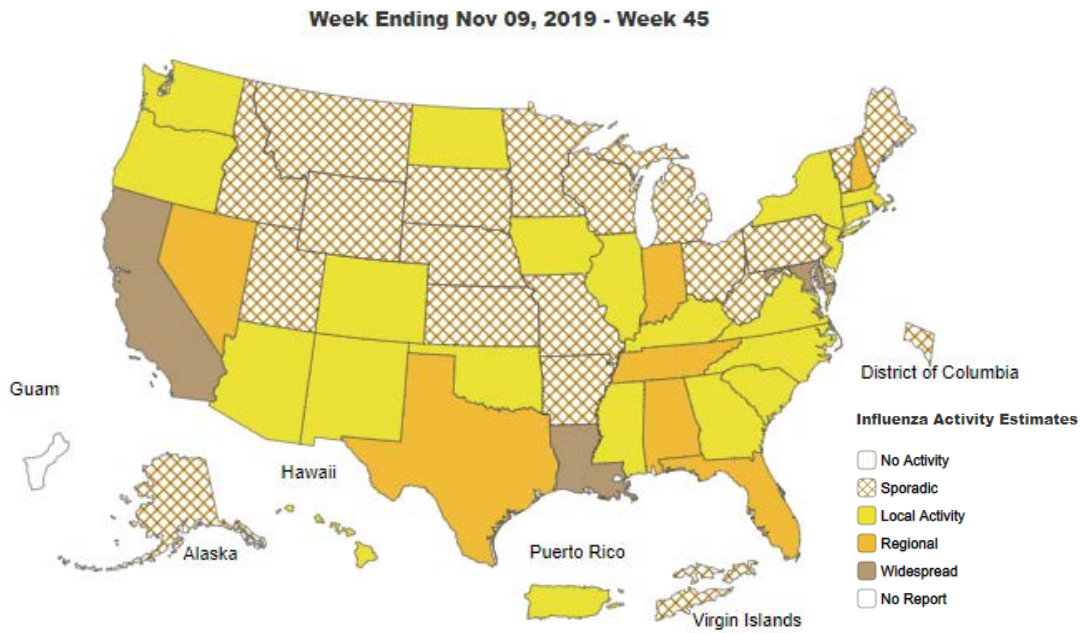


Data obtained from hospitals participating in the Electronic Surveillance System for the Early Notification of Community-based Epidemics (ESSENCE) from October 2018 through the present. Depicted are the numbers of persons presenting to Emergency Departments according to patient location (Denton region) with self-reported chief complaints of influenza-like illness.

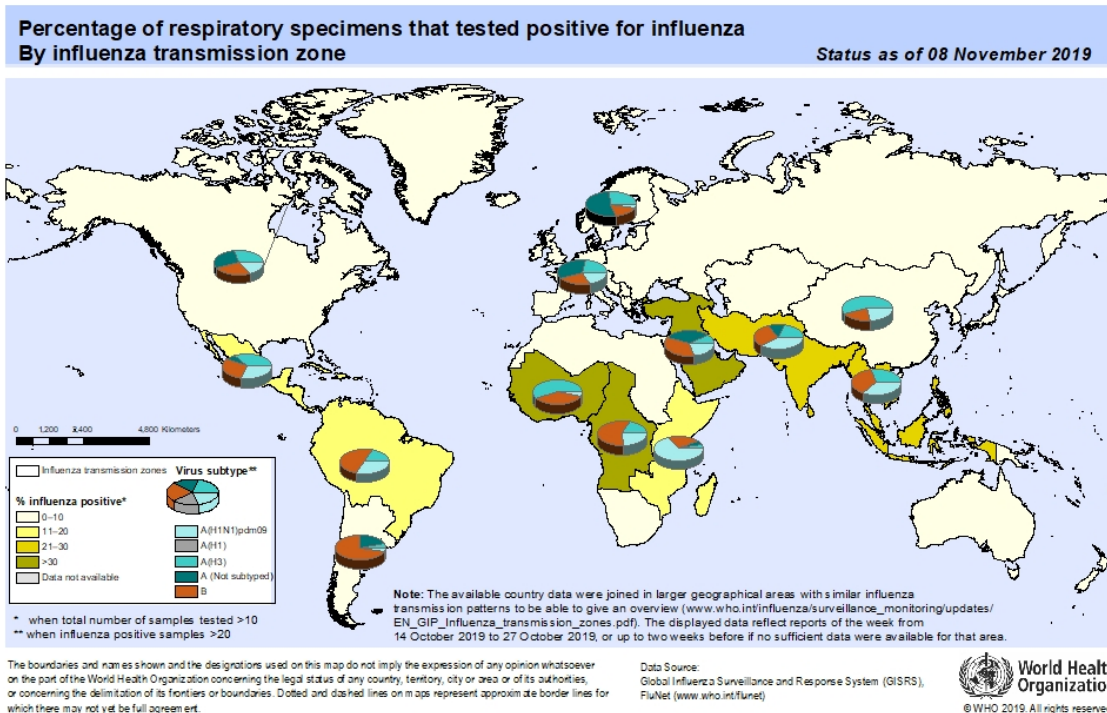
**Figure 9. Pneumonia and Influenza Mortality from the National Center for Health Statistics Mortality Surveillance System: Week ending November 2, 2019**



**Figure 10. Weekly Influenza Activity Estimates Reported by State and Territorial Epidemiologists: Week 45 – Week Ending November 9, 2019**



**Figure 11. Percentage of Respiratory Specimens that tested Positive for Influenza: WHO, based on data up to November 8, 2019**



**Please send inquiries to Lily Metzler, MPH – Epidemiologist  
Denton County Public Health at [Lily.Metzler@dentoncounty.com](mailto:Lily.Metzler@dentoncounty.com)**