

Denton County Public Health

2019 – 2020 Influenza Surveillance Program

CDC Week 44, Week Ending November 2, 2019



Epidemiologic Overview

Denton County

- Low influenza activity was reported in Denton County for week 44.
- 15 positive influenza tests (1 Flu A and 14 Flu B) and 0 hospitalizations were reported by Denton County sentinel providers for week 44.
- Syndromic surveillance for influenza-like illness (ILI) in Denton County increased for week 44 when compared to the previous week.
- 0.5% of the total reported school population was absent due to ILI in week 44.

Texas

- Influenza activity in the state of Texas remains low for week 44.
- The percentage of visits for ILI as reported by ILINet providers increased to 3.78% in week 44 compared to the previous week.
- The percentage of specimens testing positive for influenza in Texas increased to 4.49% in week 44 compared to the previous week.

US

- The proportion of outpatient visits for influenza-like illness (ILI) was 2.1%, which is below the national baseline of 2.4%.
- The geographic spread of influenza in 2 states was reported as widespread; 1 state was reported as regional; 15 states was reported as local; 31 states was reported as sporadic; and 1 state reported no activity.
- The percentage of specimens testing positive for influenza in the US was 3.2%.
- Due to technical issues, the National Center for Health Statistics mortality surveillance data for the week ending October 26, 2019 (Week 43) was not published this week.

Figure 1. Influenza Surveillance Summary: Denton County Hospitals and Providers

Week Ending	9/28/19	10/5/19	10/12/19	10/19/19	10/26/19	11/2/19	9/28/19 - Present
CDC Week	39	40	41	42	43	44	
Influenza Tests Performed Weekly	238	345	303	299	328	331	1844
Total Positive Influenza Tests	10	14	12	10	18	15	79
Percent Positive Influenza Tests*	4.2%	4.05%	3.96%	3.34%	5.49%	4.53%	
Positive A Influenza	2	5	3	1	0	1	12
Positive B Influenza	8	9	9	9	18	14	67
Non-differentiated Influenza	0	0	0	0	0	0	0
Influenza Hospitalizations	1	5	4	0	4	0	14
Influenza-associated Pediatric Deaths	0	0	0	0	0	0	0
Influenza-associated Adult Deaths	0	0	0	0	0	0	0

* Percent positive tests only includes positive tests from providers reporting number of tests performed weekly

Figure 2. Influenza Positive Tests and Percent Positive, Denton County Hospitals and Providers, 2019-2020 Season

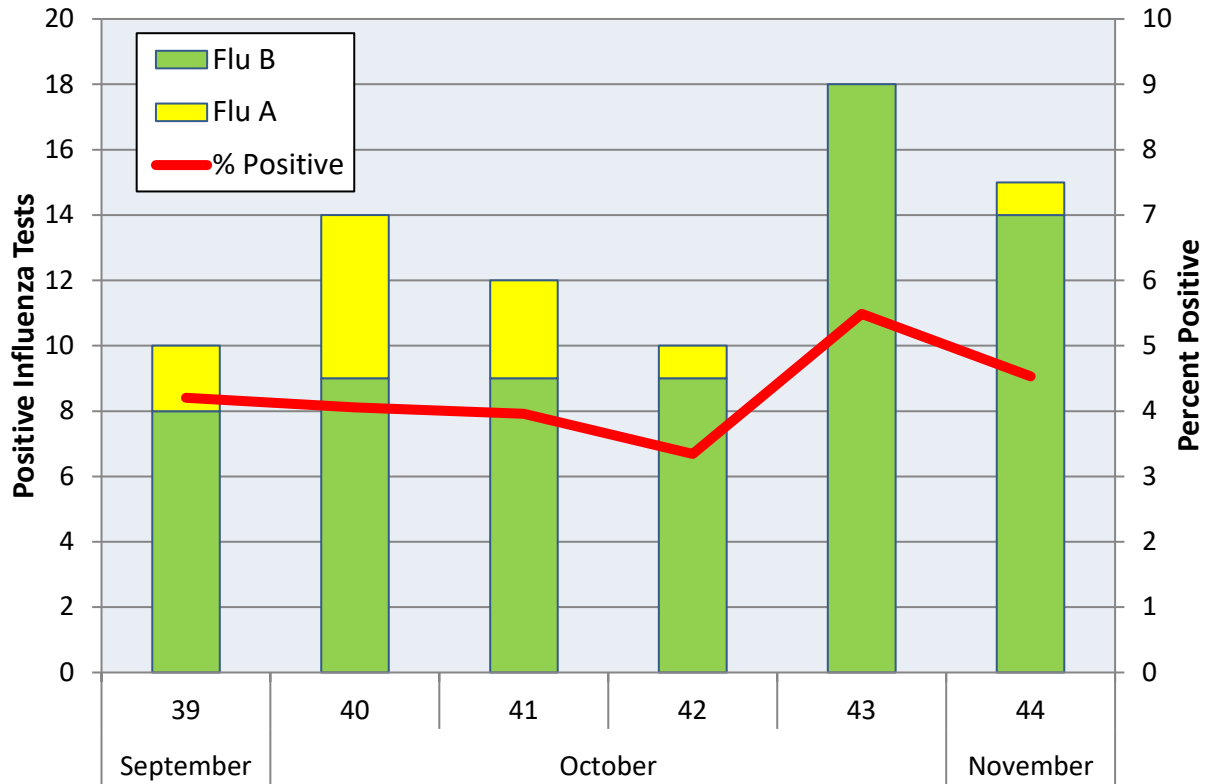
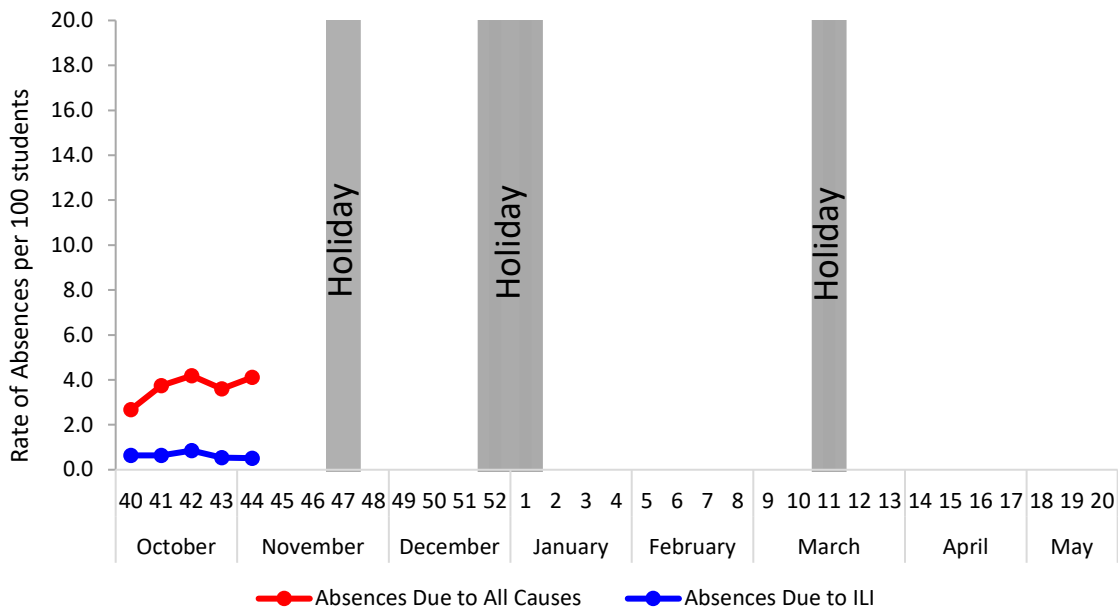


Figure 3. Percent of Absenteeism Due to All Causes and ILI, Denton County Schools*, 2019- 2020 Season



*During week 44, 4 Denton County Independent School Districts reported data to Denton County Public Health, which included a total of 22,326 students.

Figure 4. Influenza Positive Tests Reported to CDC by U.S. Public Health Laboratories, National Summary, September 30, 2018 – November 2, 2019

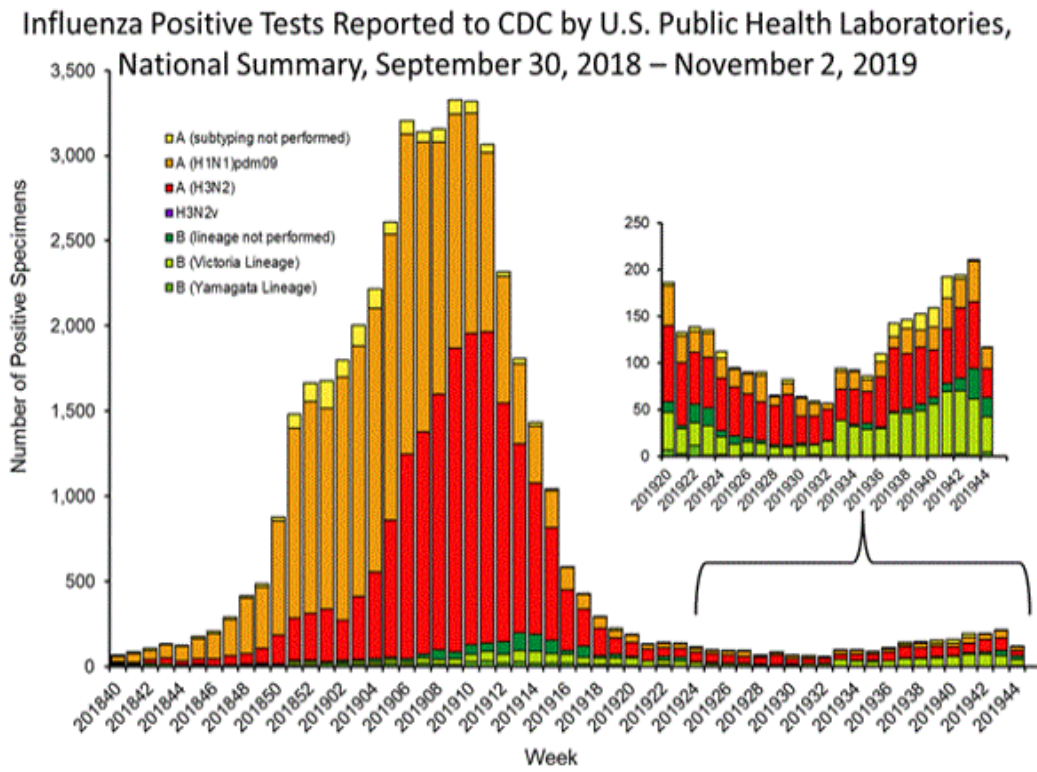


Figure 5. Influenza Positive Tests Reported to CDC by U.S. Clinical Laboratories, National Summary, September 30, 2018 – November 2, 2019

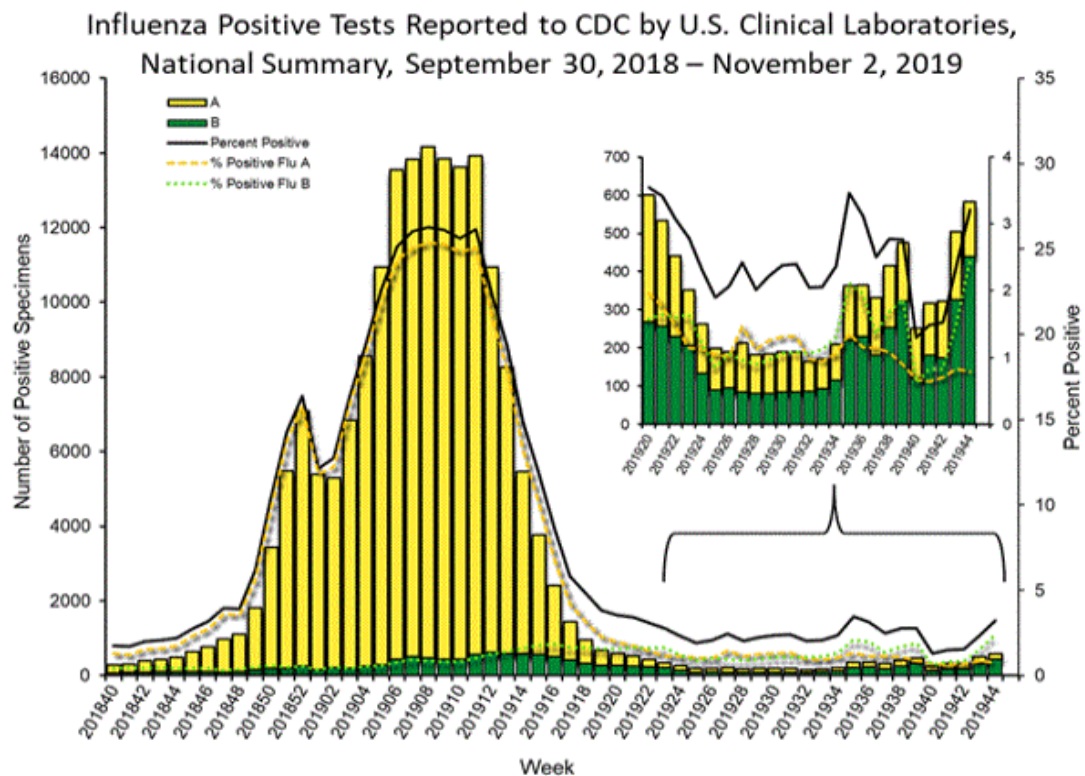


Figure 6. U.S. Virologic Surveillance, Week 44

	Week 44	Data Cumulative since September 29, 2019 (week 40)
No. of specimens tested*	18,126	101,524
No. of positive specimens (%)	582 (3.2%)	1,978 (1.9%)
<i>Positive specimens by type</i>		
Influenza A	143 (24.6%)	738 (37.3%)
Influenza B	439 (75.4%)	1,240 (62.7%)

Figure 7. ESSENCE Syndromic Surveillance for Influenza-like Illness: Denton County, August 1, 2019- November 2, 2019

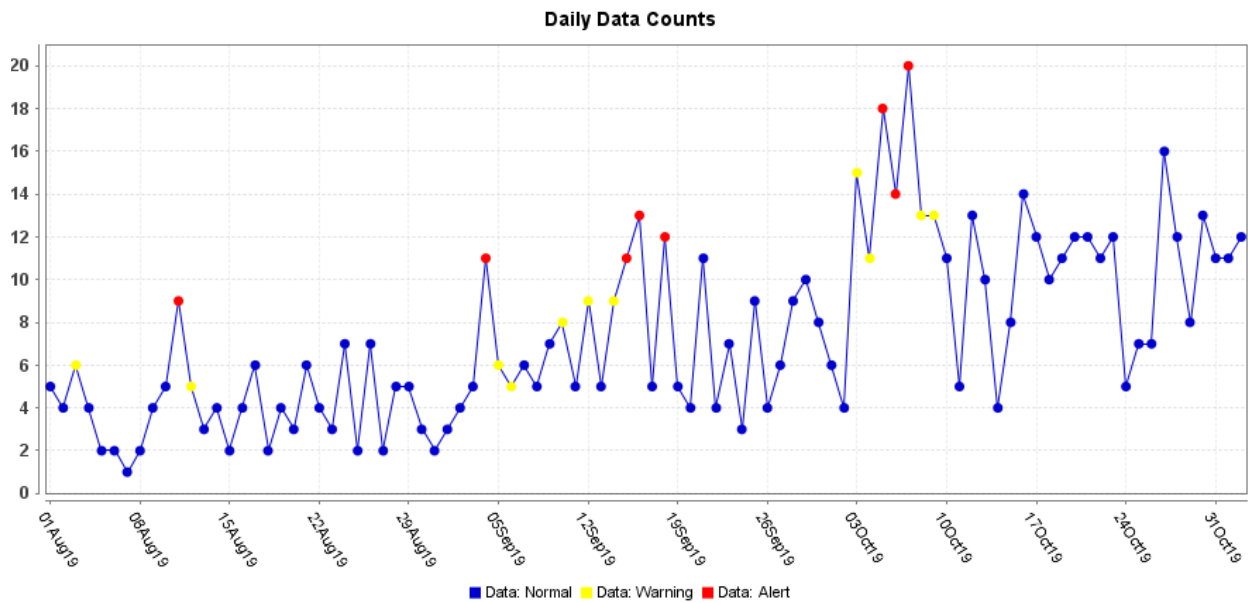
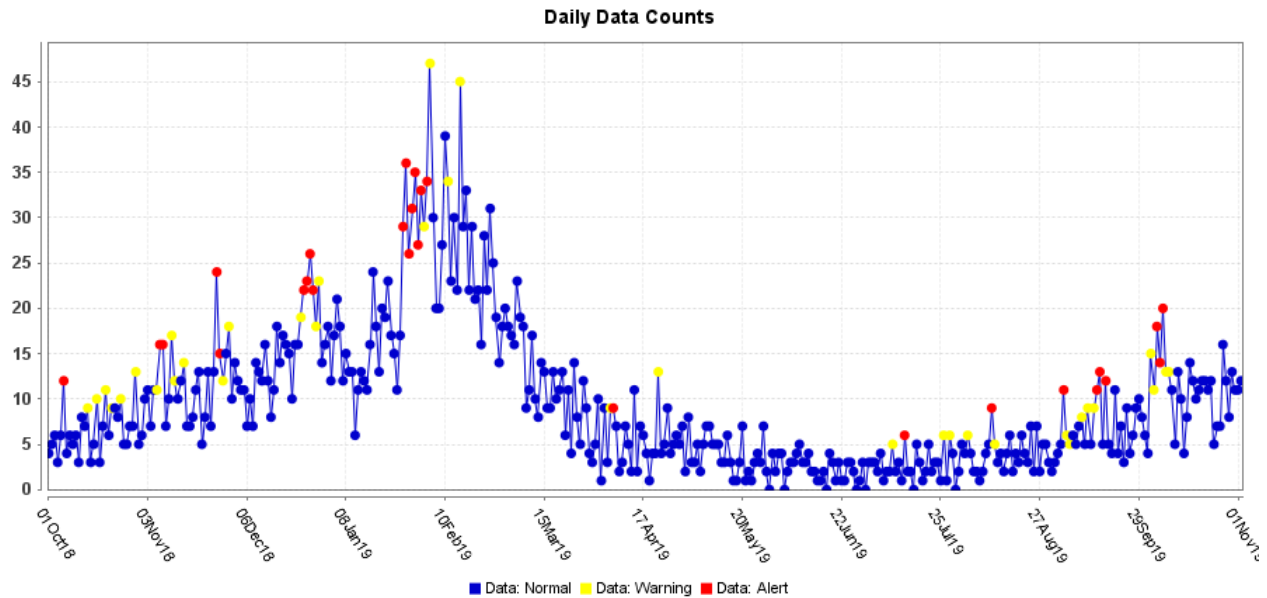


Figure 8. ESSENCE Syndromic Surveillance for Influenza-like Illness: Denton County, October 1, 2018 – November 2, 2019



Data obtained from hospitals participating in the Electronic Surveillance System for the Early Notification of Community-based Epidemics (ESSENCE) from October 2018 through the present. Depicted are the numbers of persons presenting to Emergency Departments according to patient location (Denton region) with self-reported chief complaints of influenza-like illness.

Figure 9. Pneumonia and Influenza Mortality from the National Center for Health Statistics Mortality Surveillance System: Week ending October 19, 2019

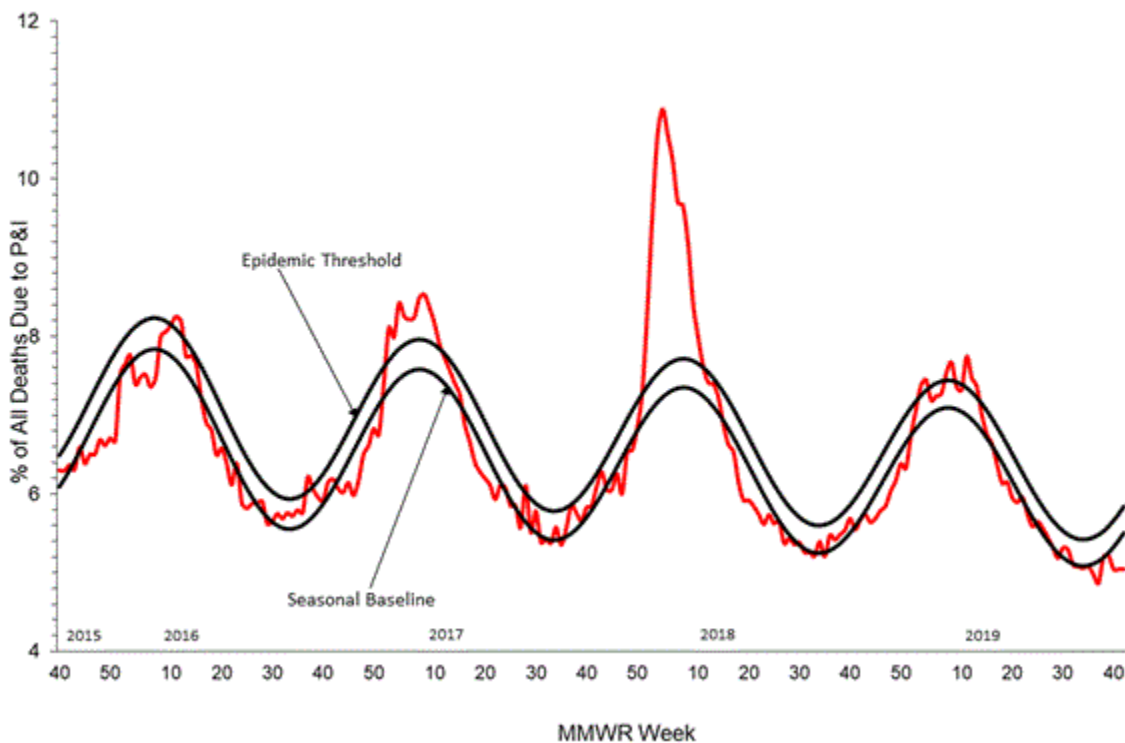


Figure 10. Weekly Influenza Activity Estimates Reported by State and Territorial Epidemiologists: Week 44 – Week Ending November 2, 2019

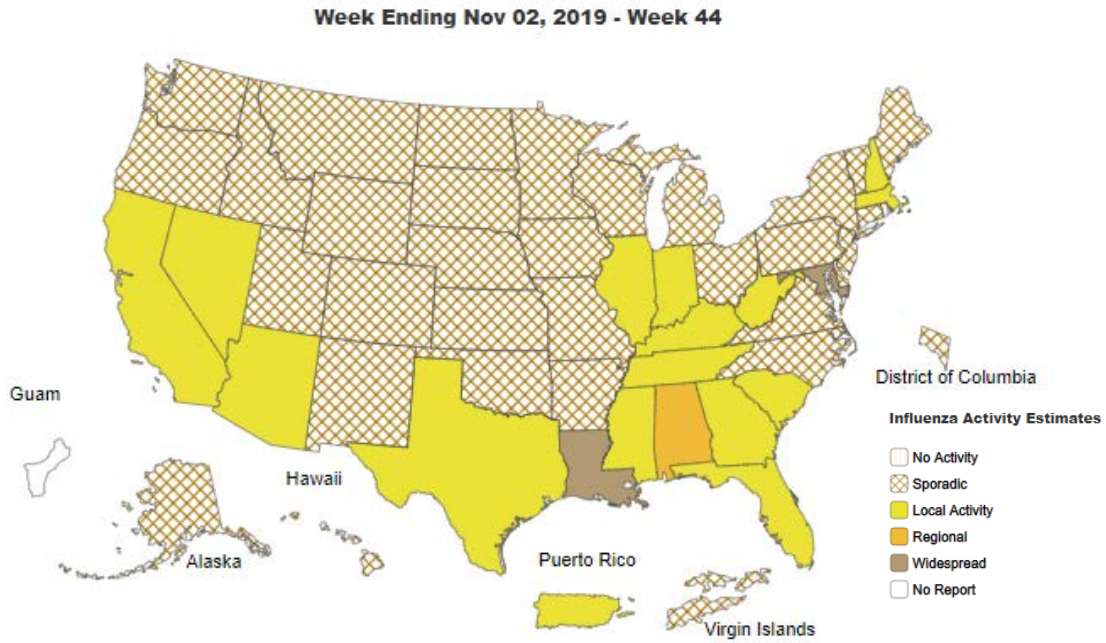
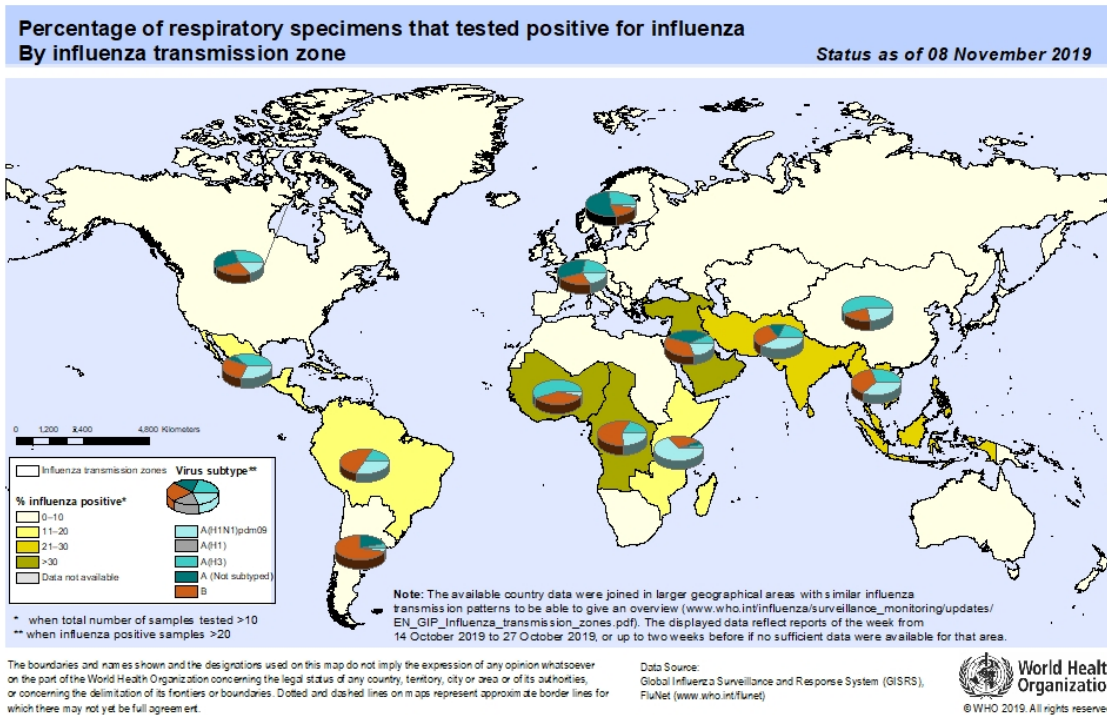


Figure 11. Percentage of Respiratory Specimens that tested Positive for Influenza: WHO, based on data up to November 8, 2019



**Please send inquiries to Lily Metzler, MPH – Epidemiologist
Denton County Public Health at Lily.Metzler@dentoncounty.com**