

Denton County Public Health

2019 – 2020 Influenza Surveillance Program

CDC Week 42, Week Ending October 19, 2019



Epidemiologic Overview

Denton County

- Minimal influenza activity was reported in Denton County for week 42.
- 10 positive influenza tests (1 Flu A and 9 Flu B) and 0 hospitalizations were reported by Denton County sentinel providers for week 42.
- Syndromic surveillance for influenza-like illness (ILI) in Denton County decreased for week 42 when compared to the previous week.
- 0.9% of the total reported school population was absent due to ILI in week 42.

Texas

- Influenza activity in the state of Texas remains low for week 41.
- The percentage of visits for ILI as reported by ILINet providers increased to 2.53% in week 41 compared to the previous week.
- The percentage of specimens testing positive for influenza in Texas decreased to 1.58% in week 41 compared to the previous week.

US

- The proportion of outpatient visits for influenza-like illness (ILI) was 1.7%, which is below the national baseline of 2.4%.
- The geographic spread of influenza in 1 state was reported as widespread; 1 state was reported as regional; 6 states was reported as local; 40 states was reported as sporadic; 1 state reported no activity; and 1 state did not report.
- The percentage of specimens testing positive for influenza in the US was 2.4%.
- The proportion of deaths attributed to pneumonia and influenza (P&I) from the National Center for Health Statistics Mortality Surveillance System for week 41 was 4.9%. This percentage is below the epidemic threshold of 5.7% for week 41.

Figure 1. Influenza Surveillance Summary: Denton County Hospitals and Providers

Week Ending	9/28/19	10/5/19	10/12/19	10/19/19	9/28/19 - Present
CDC Week	39	40	41	42	
Influenza Tests Performed Weekly	238	345	303	299	1185
Total Positive Influenza Tests	10	14	12	10	46
Percent Positive Influenza Tests*	4.2%	4.05%	3.96%	3.34%	
Positive A Influenza	2	5	3	1	11
Positive B Influenza	8	9	9	9	35
Non-differentiated Influenza	0	0	0	0	0
Influenza Hospitalizations	1	5	4	0	10
Influenza-associated Pediatric Deaths	0	0	0	0	0
Influenza-associated Adult Deaths	0	0	0	0	0

* Percent positive tests only includes positive tests from providers reporting number of tests performed weekly

Figure 2. Influenza Positive Tests and Percent Positive, Denton County Hospitals and Providers, 2019-2020 Season

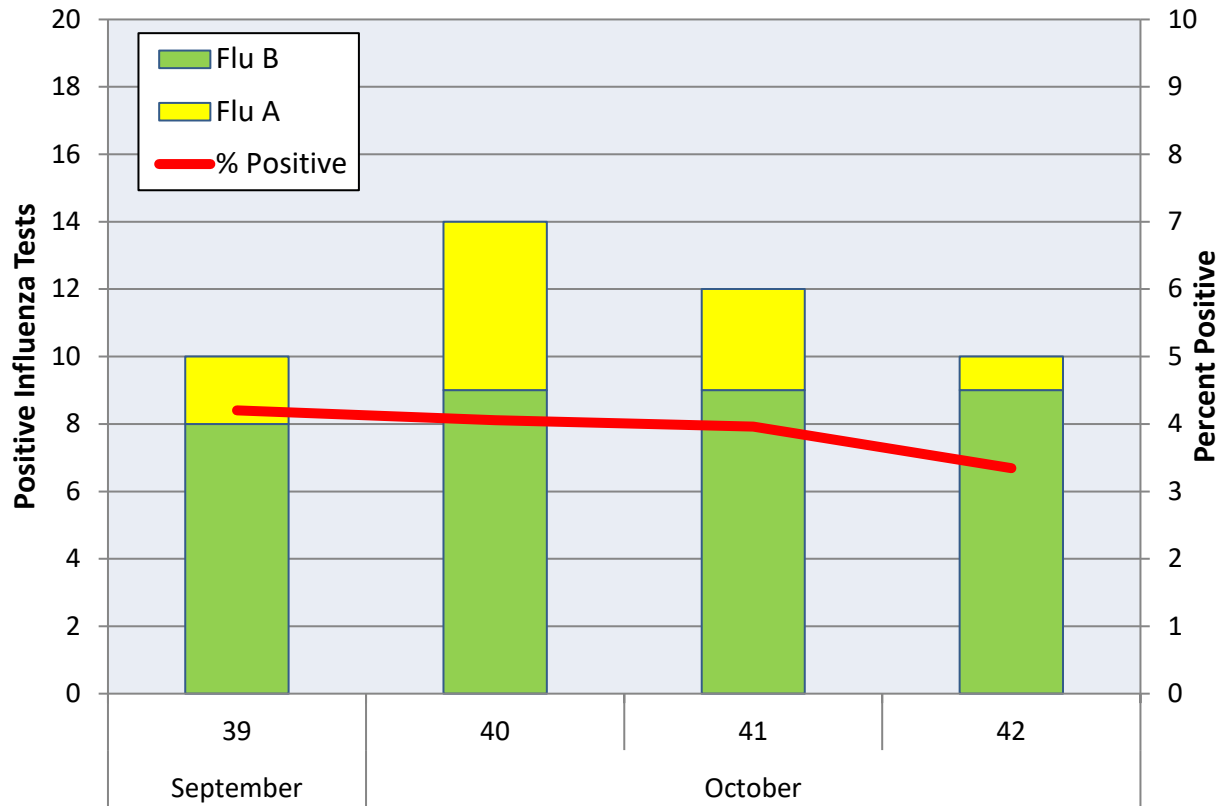
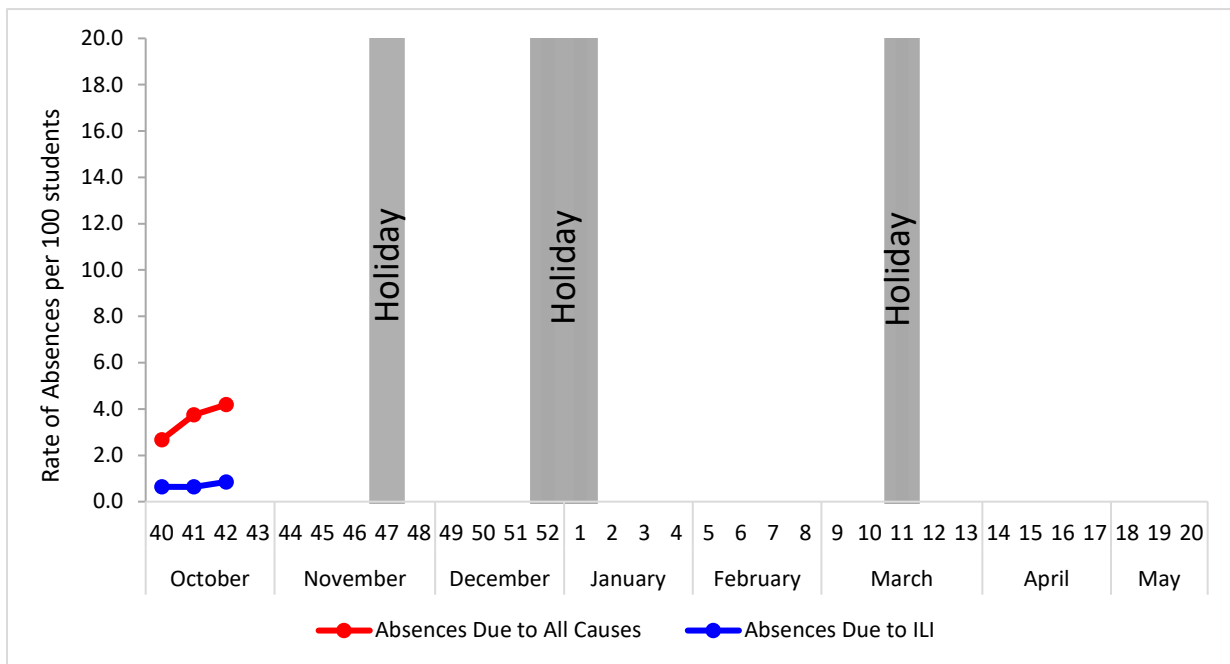


Figure 3. Percent of Absenteeism Due to All Causes and ILI, Denton County Schools*, 2019- 2020 Season



*During week 42, 3 Denton County Independent School Districts reported data to Denton County Public Health, which included a total of 8,683 students.

Figure 4. Influenza Positive Tests Reported to CDC by U.S. Public Health Laboratories, National Summary, September 30, 2018 - October 19, 2019

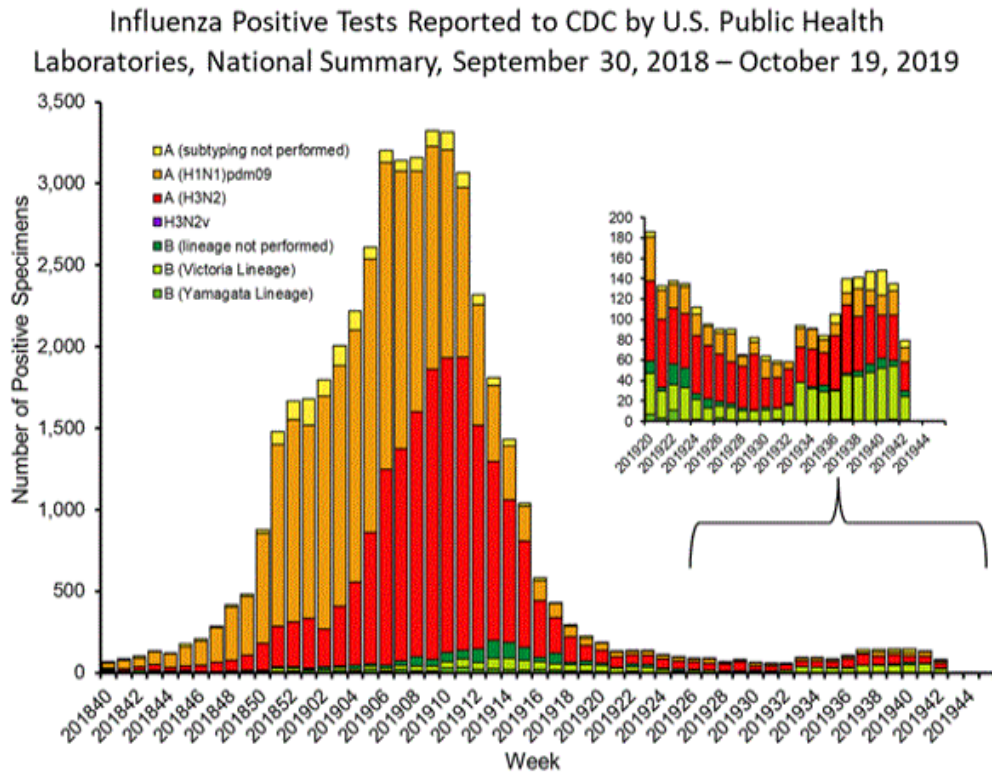


Figure 5. Influenza Positive Tests Reported to CDC by U.S. Clinical Laboratories, National Summary, September 30, 2018 - October 19, 2019

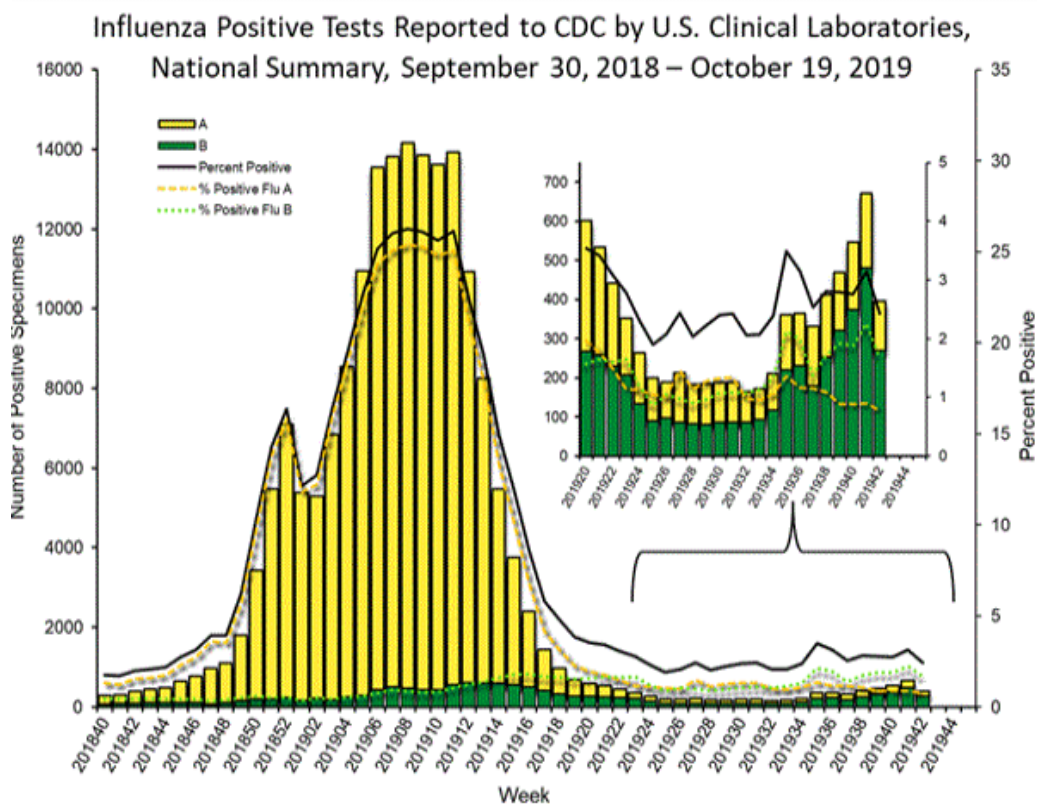


Figure 6. U.S. Virologic Surveillance, Week 42

	Week 42	Data Cumulative since September 29, 2019 (week 40)
No. of specimens tested	16,270	57,399
No. of positive specimens (%)	395 (2.4%)	1,613 (2.8%)
<i>Positive specimens by type</i>		
Influenza A	126 (31.9%)	491 (30.4%)
Influenza B	269 (68.1%)	1,122 (69.6%)

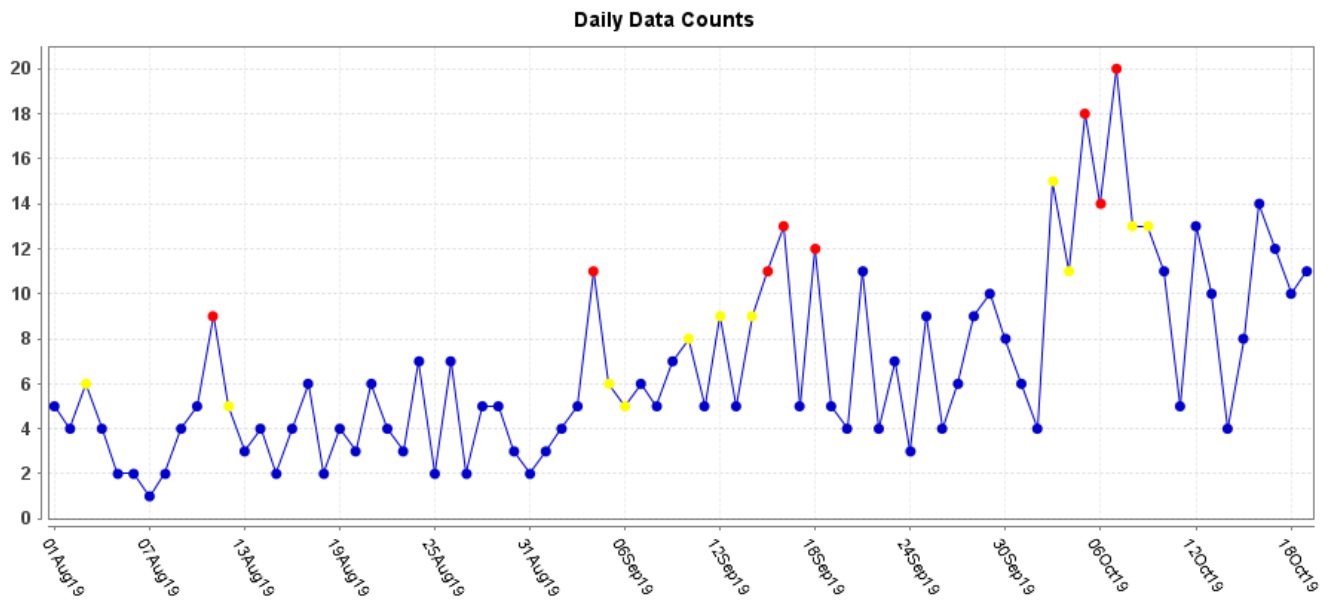
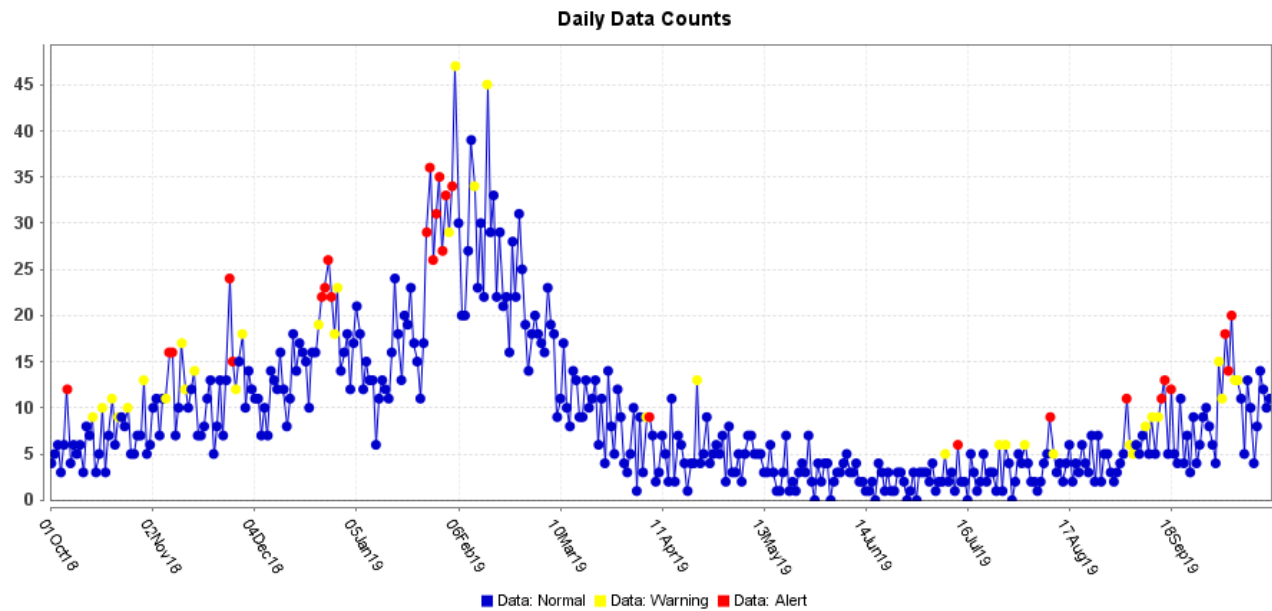
Figure 7. ESSENCE Syndromic Surveillance for Influenza-like Illness: Denton County, August 1, 2019- October 19, 2019

Figure 8. ESSENCE Syndromic Surveillance for Influenza-like Illness: Denton County, October 1, 2018 – October 19, 2019



Data obtained from hospitals participating in the Electronic Surveillance System for the Early Notification of Community-based Epidemics (ESSENCE) from October 2017 through the present. Depicted are the numbers of persons presenting to Emergency Departments according to patient location (Denton region) with self-reported chief complaints of influenza-like illness.

Figure 9. Pneumonia and Influenza Mortality from the National Center for Health Statistics Mortality Surveillance System: Week ending October 12, 2019

Pneumonia and Influenza Mortality from
the National Center for Health Statistics Mortality Surveillance System
Data through the week ending October 12, 2019, as of October 24, 2019

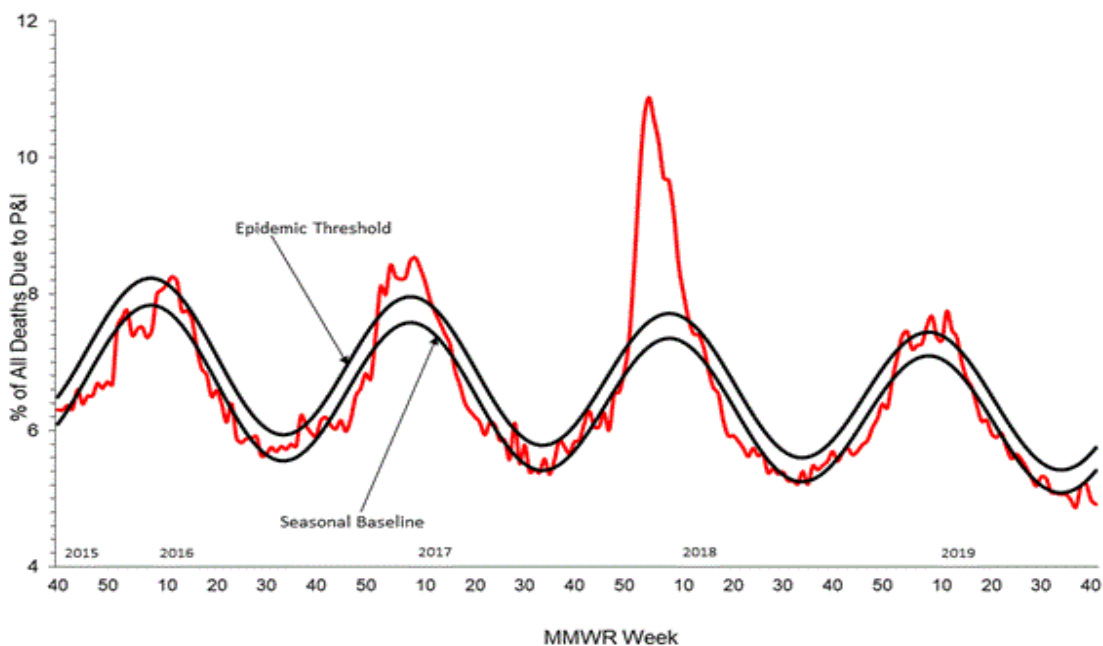


Figure 10. Weekly Influenza Activity Estimates Reported by State and Territorial Epidemiologists: Week 42 – Week Ending October 19, 2019

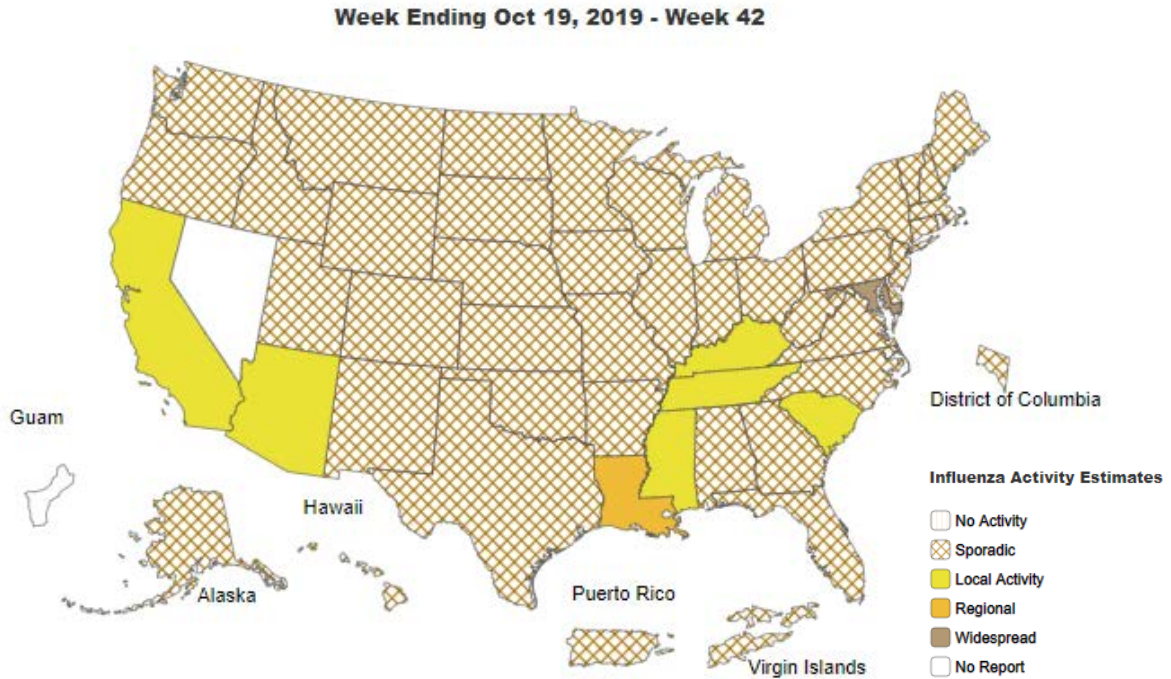
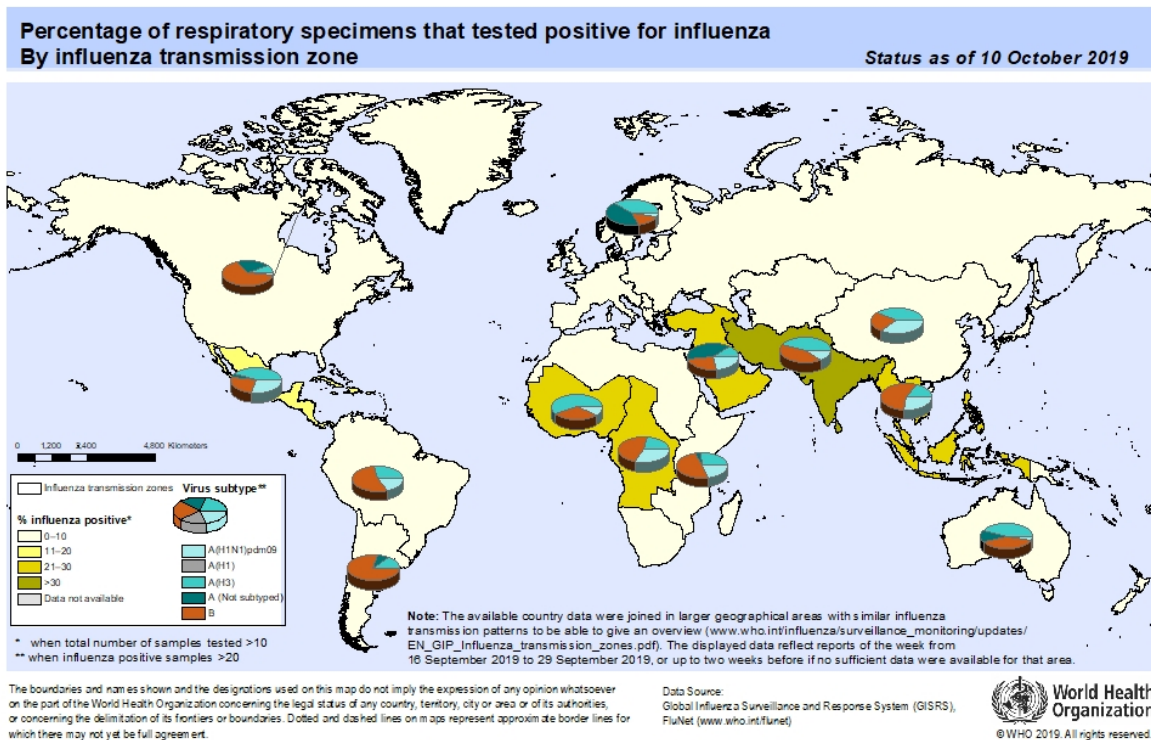


Figure 11. Percentage of Respiratory Specimens that tested Positive for Influenza: WHO, based on data up to October 10, 2019



**Please send inquiries to Lily Metzler, MPH – Epidemiologist
Denton County Public Health at Lily.Metzler@dentoncounty.com**