

# Denton County Public Health

## 2019 – 2020 Influenza Surveillance Program

### CDC Week 41, Week Ending October 12, 2019



## Epidemiologic Overview

### Denton County

- Minimal influenza activity was reported in Denton County for week 41.
- 12 positive influenza tests (3 Flu A and 9 Flu B) and 4 hospitalizations were reported by Denton County sentinel providers for week 41.
- Syndromic surveillance for influenza-like illness (ILI) in Denton County decreased for week 41 when compared to the previous week.

### Texas

- Influenza activity in the state of Texas remains low for week 39.
- The percentage of visits for ILI as reported by ILINet providers increased to 2.07% in week 39 compared to the previous week.
- The percentage of specimens testing positive for influenza in Texas increased to 1.67% in week 39 compared to the previous week.

### US

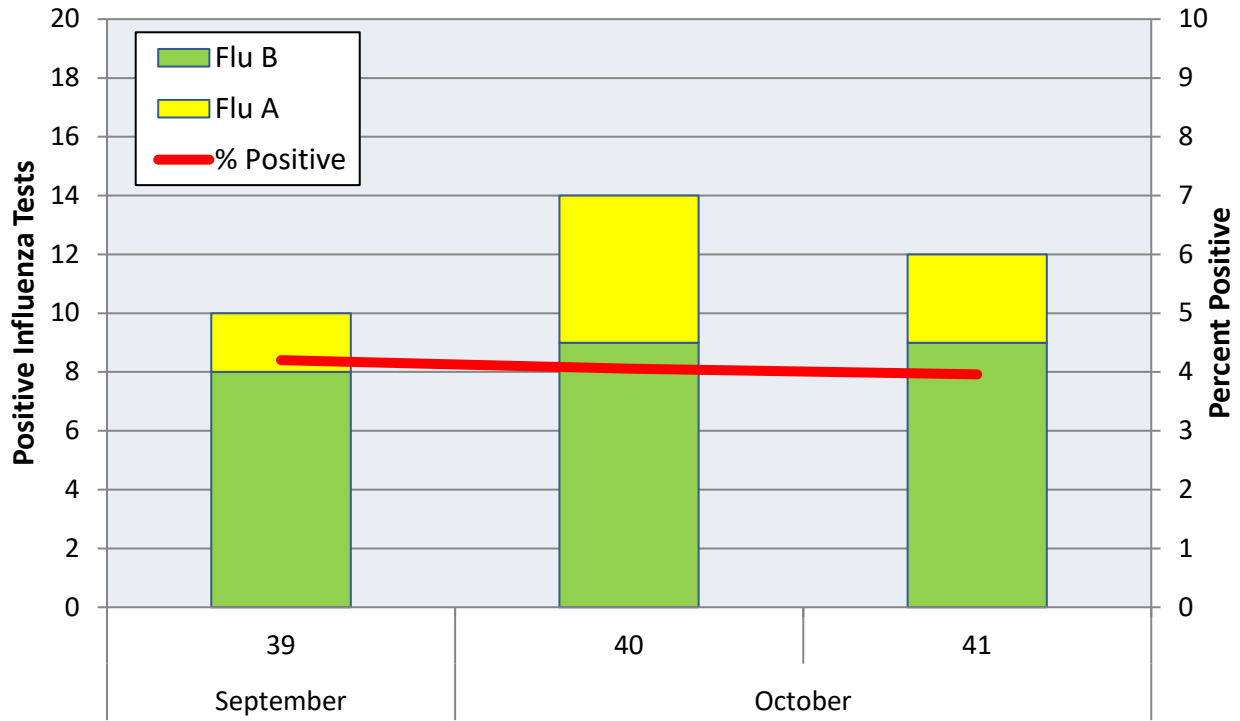
- The proportion of outpatient visits for influenza-like illness (ILI) was 1.5%, which is below the national baseline of 2.4%.
- The geographic spread of influenza in 1 state was reported as regional; 43 states was reported as sporadic; 3 states was reported as local; and 3 states reported no activity.
- The percentage of specimens testing positive for influenza in the US was 3.4%.
- The proportion of deaths attributed to pneumonia and influenza (P&I) from the National Center for Health Statistics Mortality Surveillance System for week 40 was 4.7%. This percentage is below the epidemic threshold of 5.7% for week 40.

**Figure 1. Influenza Surveillance Summary: Denton County Hospitals and Providers**

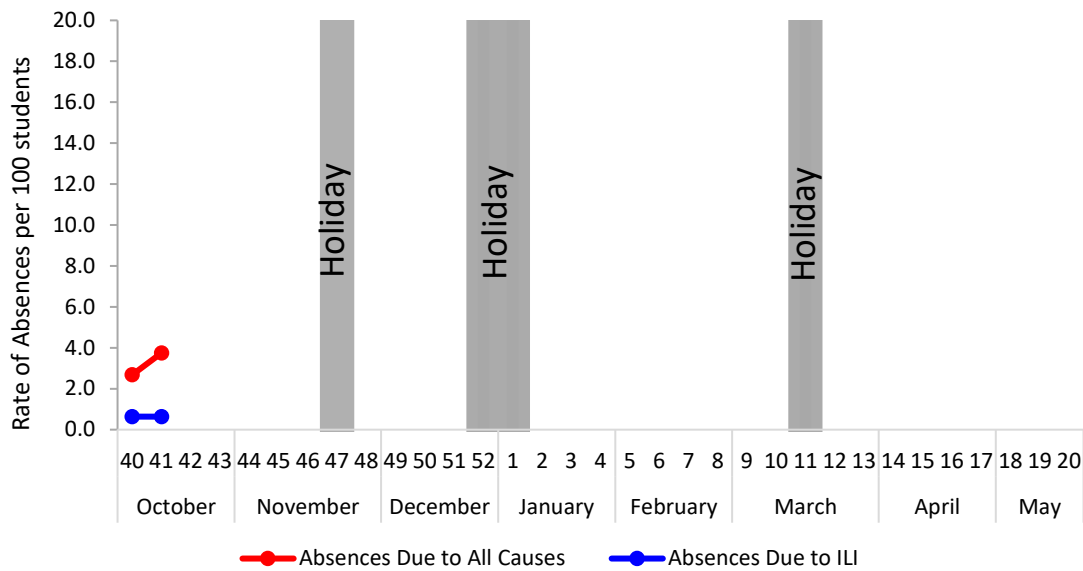
Week Ending	9/28/19	10/5/19	10/12/19	9/28/19 - Present
<b>CDC Week</b>	39	40	41	
<b>Influenza Tests Performed Weekly</b>	238	345	303	886
<b>Total Positive Influenza Tests</b>	10	14	12	36
<b>Percent Positive Influenza Tests*</b>	4.2%	4.05%	3.96%	
<b>Positive A Influenza</b>	2	5	3	10
<b>Positive B Influenza</b>	8	9	9	26
<b>Non-differentiated Influenza</b>	0	0	0	0
<b>Influenza Hospitalizations</b>	1	5	4	10
<b>Influenza-associated Pediatric Deaths</b>	0	0	0	0
<b>Influenza-associated Adult Deaths</b>	0	0	0	0

\* Percent positive tests only includes positive tests from providers reporting number of tests performed weekly

**Figure 2. Influenza Positive Tests and Percent Positive, Denton County Hospitals and Providers, 2019-2020 Season**

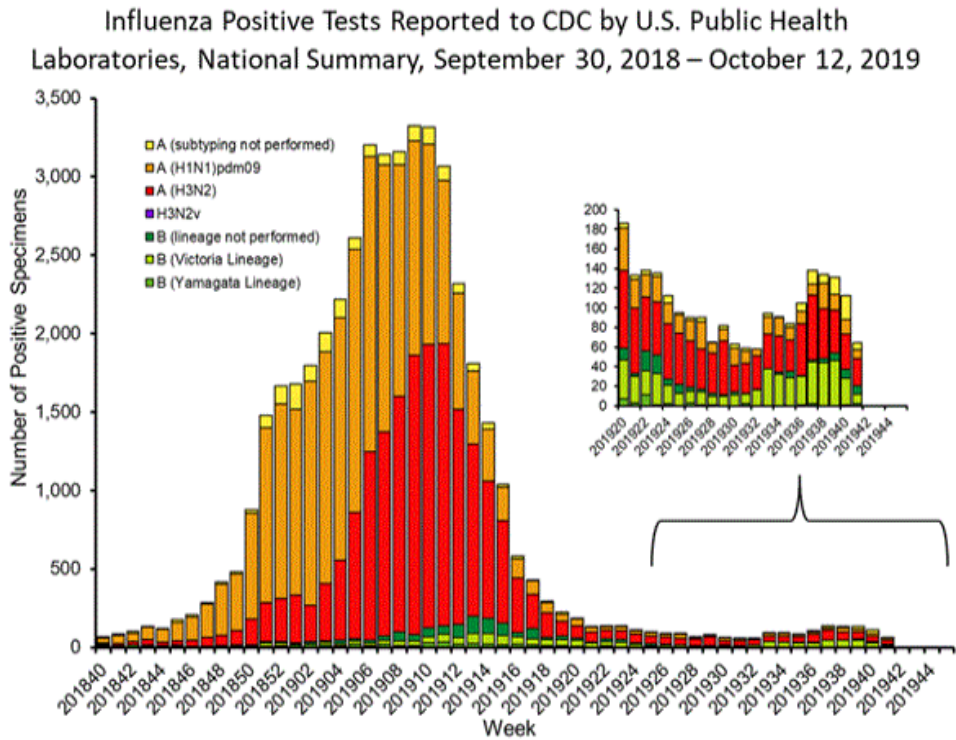


**Figure 3. Percent of Absenteeism Due to All Causes and ILI, Denton County Schools\*, 2019- 2020 Season**

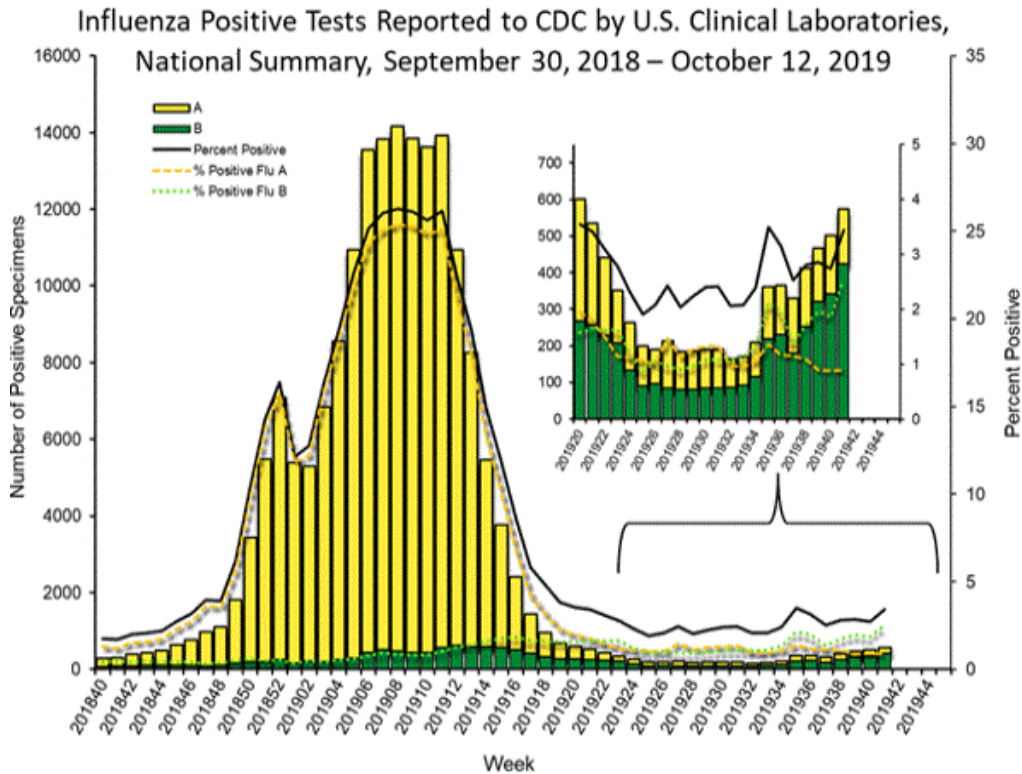


\*During week 41, 3 Denton County Independent School Districts reported data to Denton County Public Health, which included a total of 7,987 students.

**Figure 4. Influenza Positive Tests Reported to CDC by U.S. Public Health Laboratories, National Summary, September 30, 2018 - October 12, 2019**



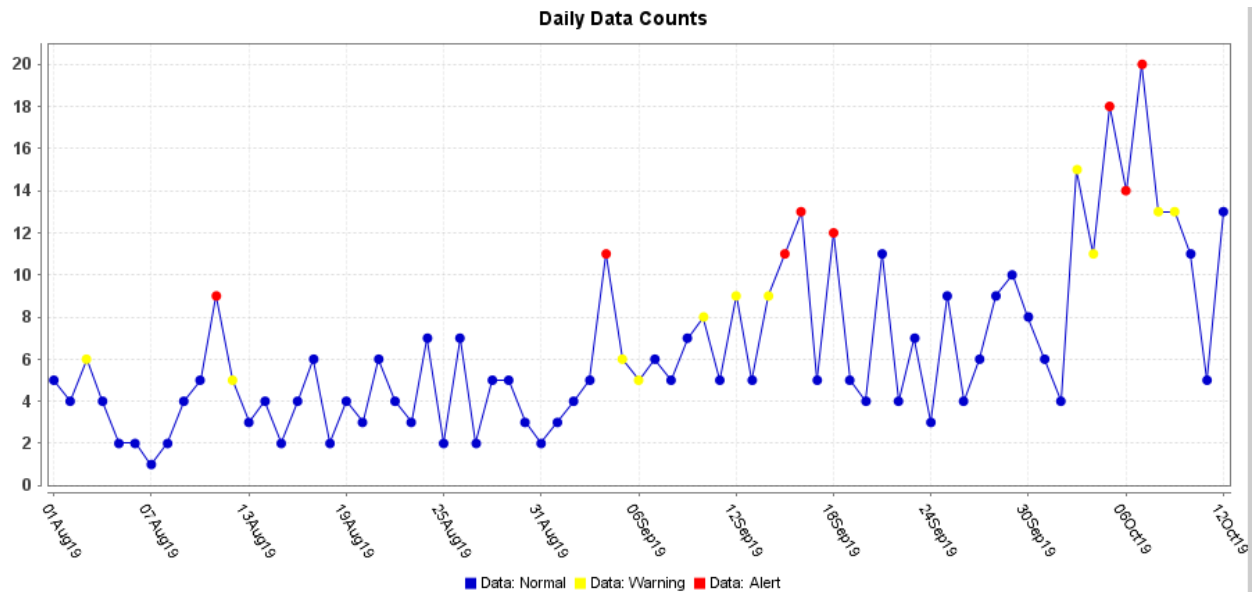
**Figure 5. Influenza Positive Tests Reported to CDC by U.S. Clinical Laboratories, National Summary, September 30, 2018 - October 12, 2019**



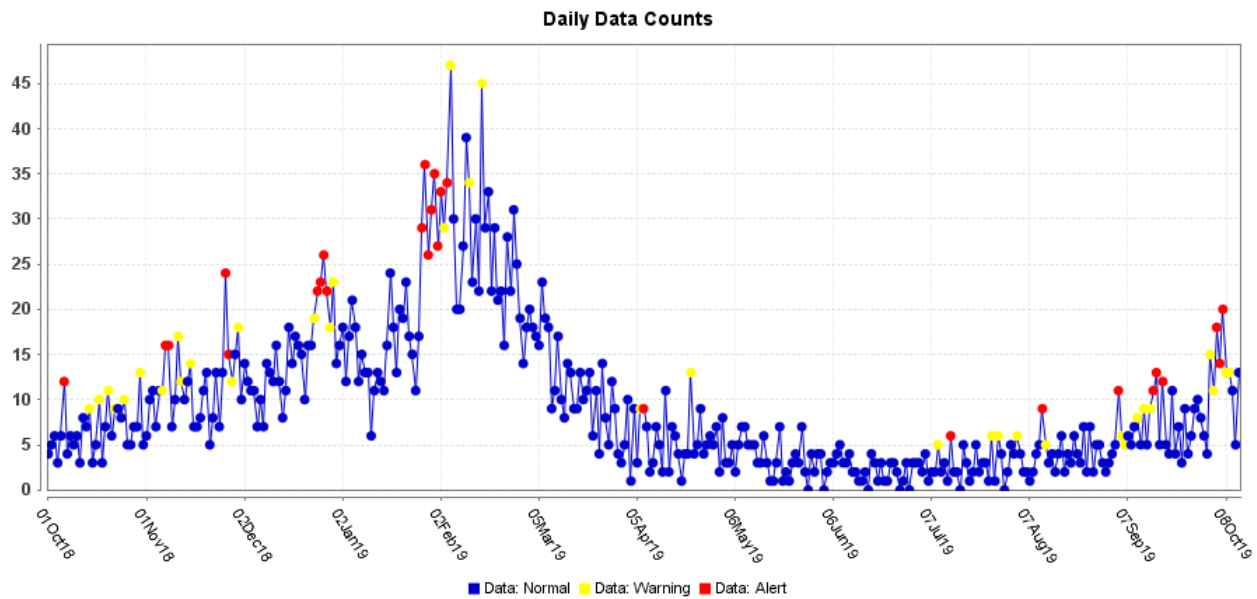
**Figure 6. U.S. Virologic Surveillance, Week 41**

Clinical Laboratories	Week 41	Data Cumulative since September 29, 2019 (week 40)
No. of specimens tested	16,672	34,990
No. of positive specimens (%)	573 (3.4%)	1,075 (3.1%)
<i>Positive specimens by type</i>		
Influenza A	150 (26.2%)	311 (28.9%)
Influenza B	423 (73.8%)	764 (71.1%)

**Figure 7. ESSENCE Syndromic Surveillance for Influenza-like Illness: Denton County, August 1, 2019- October 12, 2019**

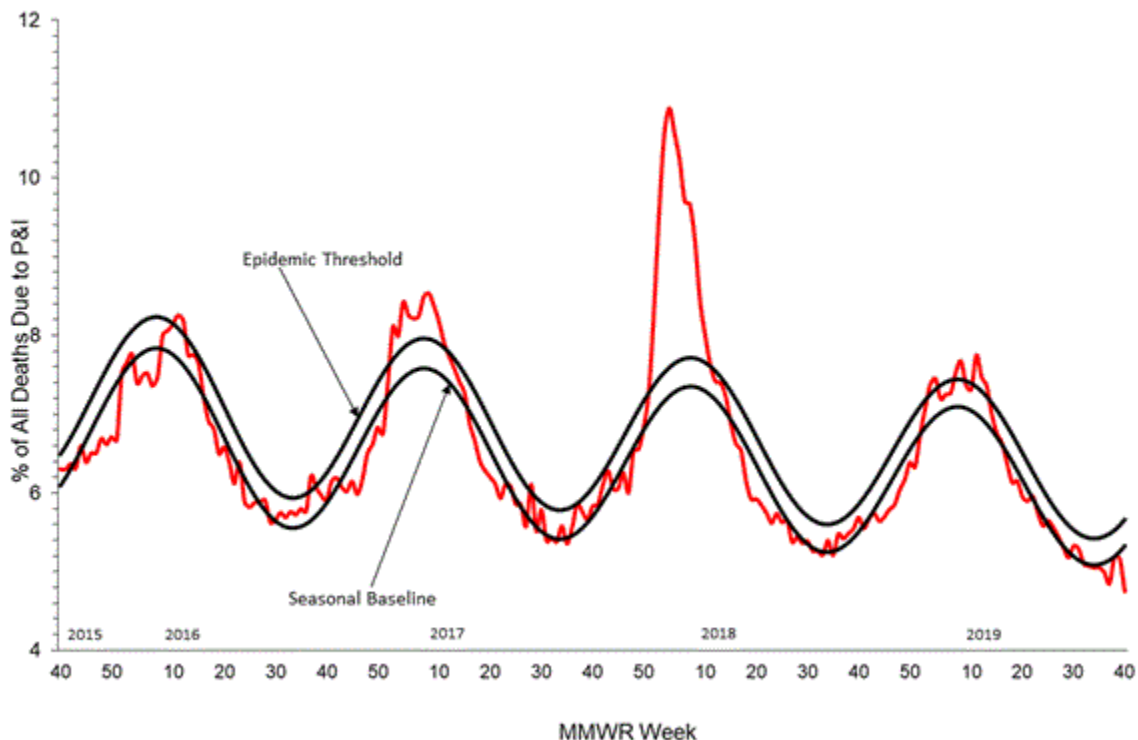


**Figure 8. ESSENCE Syndromic Surveillance for Influenza-like Illness: Denton County, October 1, 2018 – October 12, 2019**



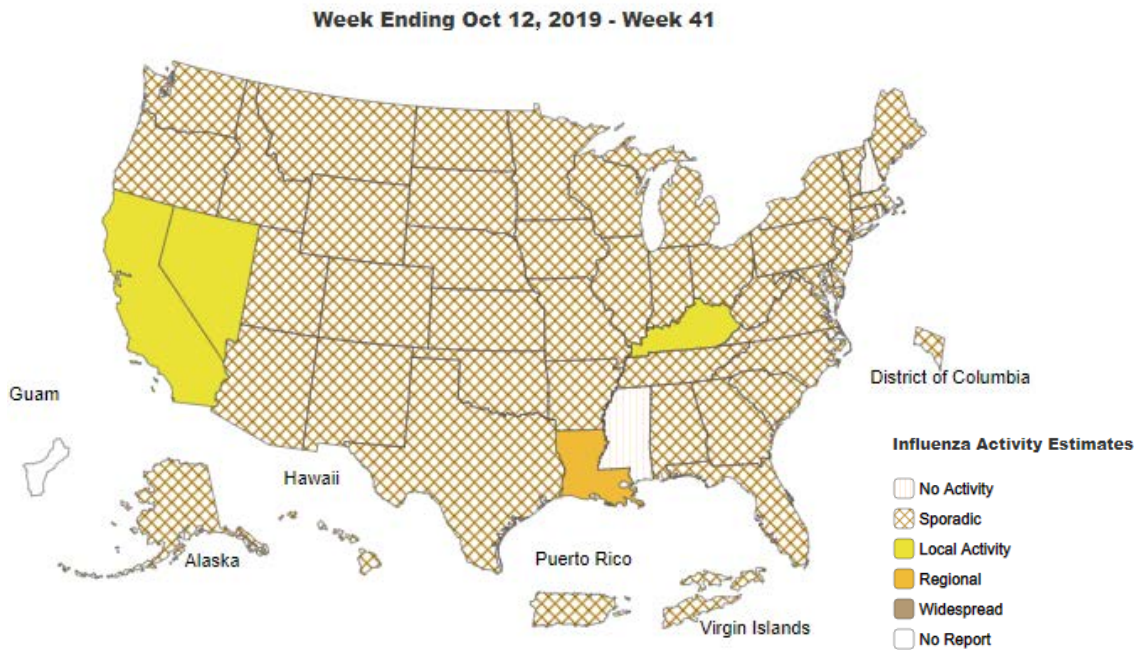
Data obtained from hospitals participating in the Electronic Surveillance System for the Early Notification of Community-based Epidemics (ESSENCE) from October 2017 through the present. Depicted are the numbers of persons presenting to Emergency Departments according to patient location (Denton region) with self-reported chief complaints of influenza-like illness.

**Figure 9. Pneumonia and Influenza Mortality from the National Center for Health Statistics Mortality Surveillance System: Week ending October 5, 2019**

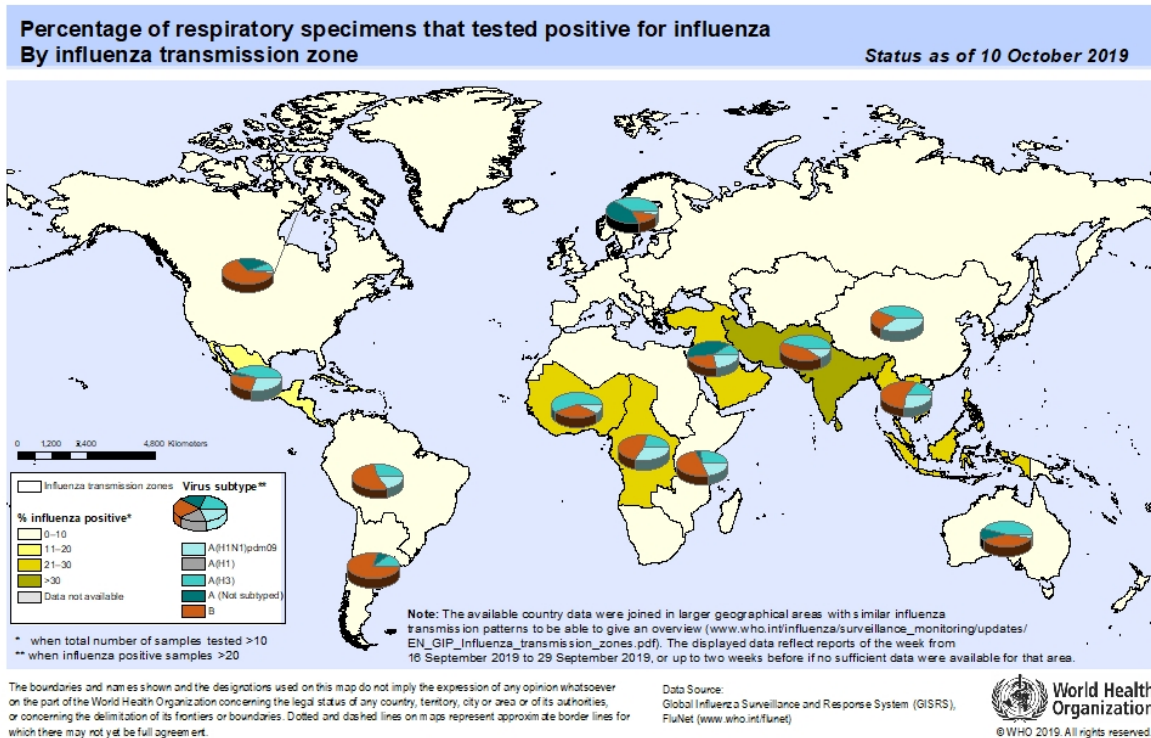




**Figure 10. Weekly Influenza Activity Estimates Reported by State and Territorial Epidemiologists: Week 41 – Week Ending October 12, 2019**



**Figure 11. Percentage of Respiratory Specimens that tested Positive for Influenza: WHO, based on data up to October 10, 2019**



**Please send inquiries to Lily Metzler, MPH – Epidemiologist  
Denton County Public Health at [Lily.Metzler@dentoncounty.com](mailto:Lily.Metzler@dentoncounty.com)**