

Denton County Public Health

2019 – 2020 Influenza Surveillance Program

CDC Week 40, Week Ending October 5, 2019



Epidemiologic Overview

Denton County

- Minimal influenza activity was reported in Denton County for week 40.
- 14 positive influenza tests (5 Flu A and 9 Flu B) and 5 hospitalizations were reported by Denton County sentinel providers for week 40.
- Syndromic surveillance for influenza-like illness (ILI) in Denton County increased for week 40 when compared to the previous week.

Texas

- Influenza activity in the state of Texas remains low for week 39.
- The percentage of visits for ILI as reported by ILINet providers increased to 2.07% in week 39 compared to the previous week.
- The percentage of specimens testing positive for influenza in Texas increased to 1.67% in week 39 compared to the previous week.

US

- The proportion of outpatient visits for influenza-like illness (ILI) was 1.4%, which is below the national baseline of 2.4%.
- The geographic spread of influenza in 40 states was reported as sporadic; 4 states was reported as local; and 6 states reported no activity.
- The percentage of specimens testing positive for influenza in the US was 3.1%.
- The proportion of deaths attributed to pneumonia and influenza (P&I) from the National Center for Health Statistics Mortality Surveillance System for week 39 was 5.0%. This percentage is below the epidemic threshold of 5.6% for week 39.

Figure 1. Influenza Surveillance Summary: Denton County Hospitals and Providers

Week Ending	9/28/19	10/5/19	9/28/19 - Present
CDC Week	39	40	
Influenza Tests Performed Weekly	238	345	583
Total Positive Influenza Tests	10	14	24
Percent Positive Influenza Tests*	4.2%	4.05%	
Positive A Influenza	2	5	7
Positive B Influenza	8	9	17
Non-differentiated Influenza	0	0	0
Influenza Hospitalizations	1	5	6
Influenza-associated Pediatric Deaths	0	0	0
Influenza-associated Adult Deaths	0	0	0

* Percent positive tests only includes positive tests from providers reporting number of tests performed weekly

Figure 2. Influenza Positive Tests and Percent Positive, Denton County Hospitals and Providers, 2019-2020 Season

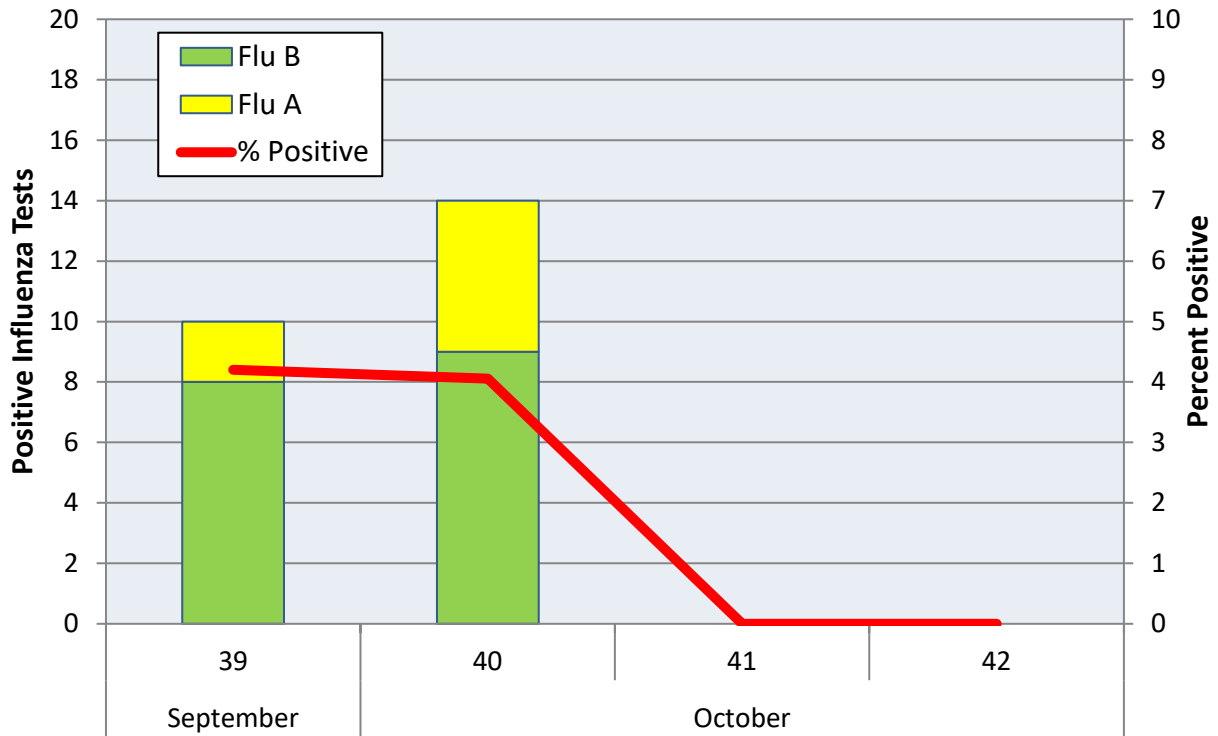


Figure 3. Influenza Positive Tests Reported to CDC by U.S. Public Health Laboratories, National Summary, September 30, 2018 - October 5, 2019

Influenza Positive Tests Reported to CDC by U.S. Public Health Laboratories, National Summary, September 30, 2018 – October 5, 2019

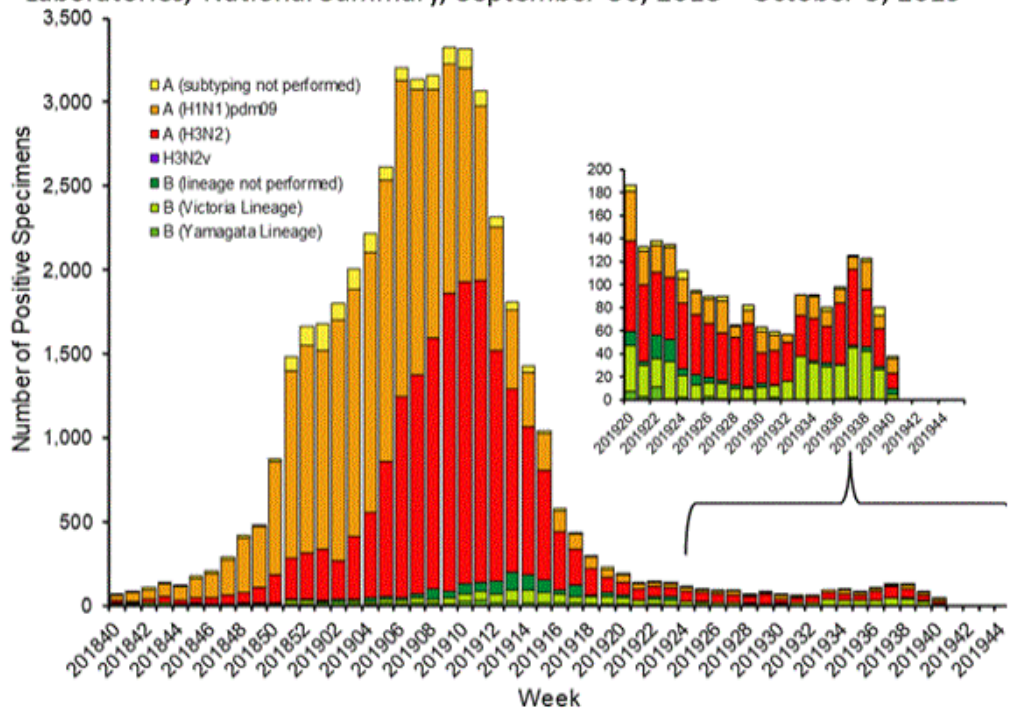


Figure 4. Influenza Positive Tests Reported to CDC by U.S. Clinical Laboratories, National Summary, September 30, 2018 – October 5, 2019

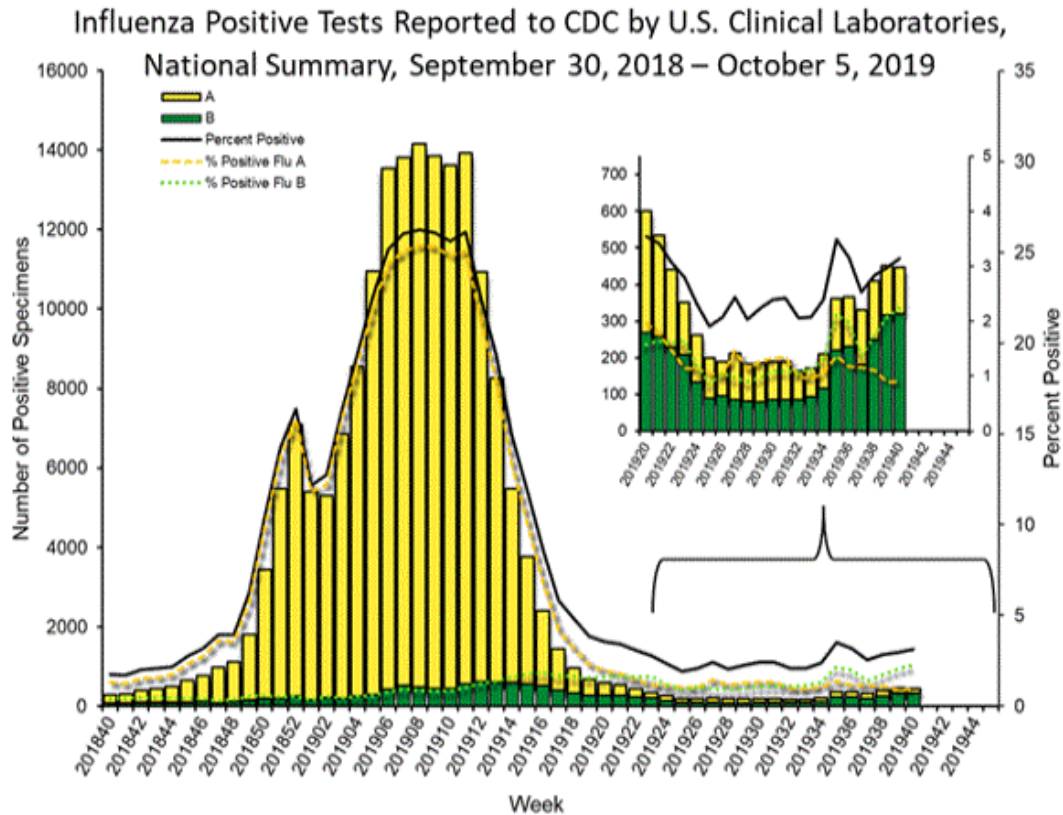


Figure 5. U.S. Virologic Surveillance, Week 40

	Week 40
No. of specimens tested	14,227
No. of positive specimens (%)	447 (3.1%)
<i>Positive specimens by type</i>	
Influenza A	127 (28.4%)
Influenza B	320 (71.6%)

Figure 6. ESSENCE Syndromic Surveillance for Influenza-like Illness: Denton County, August 1, 2019- October 5, 2019

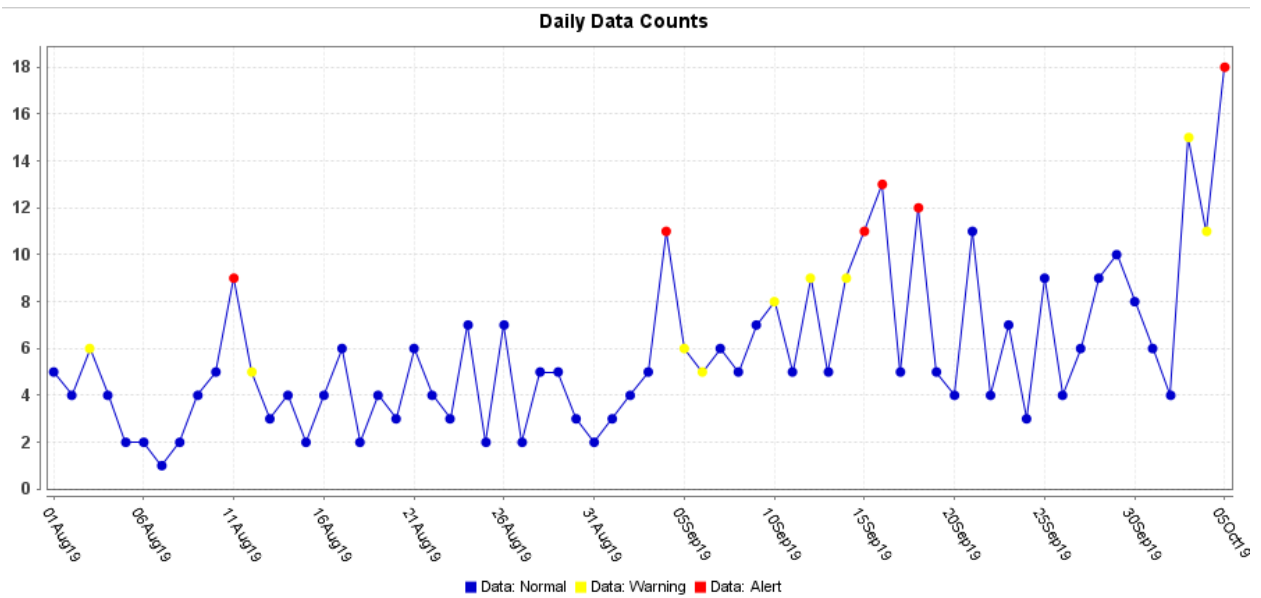
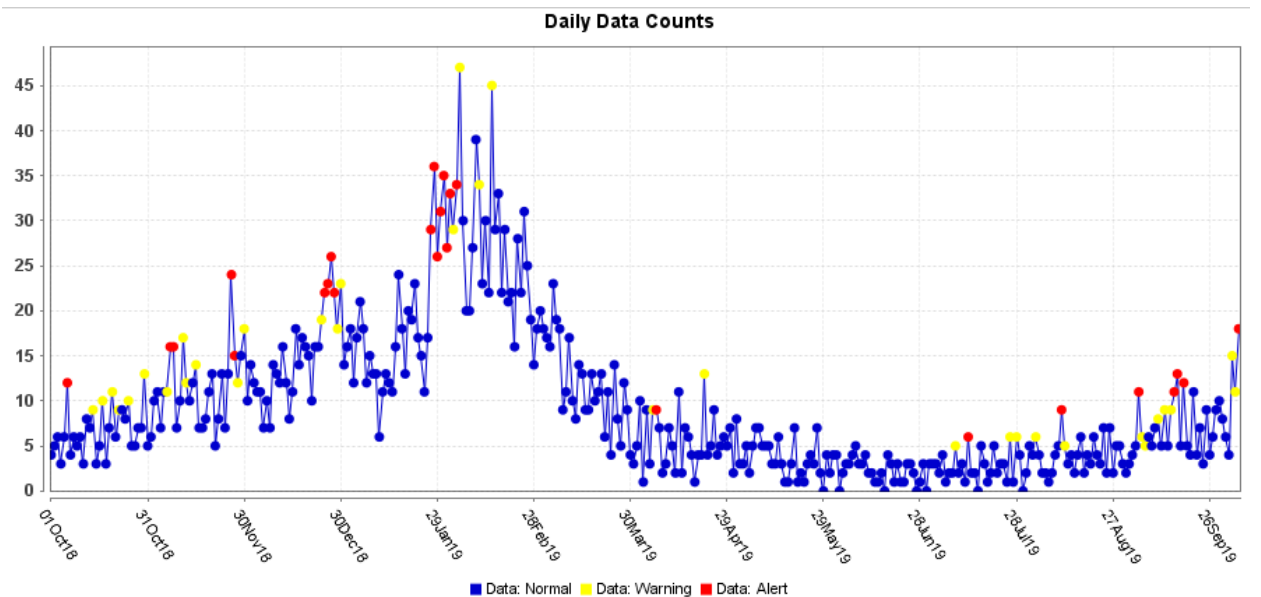


Figure 7. ESSENCE Syndromic Surveillance for Influenza-like Illness: Denton County, October 1, 2018 – October 5, 2019



Data obtained from hospitals participating in the Electronic Surveillance System for the Early Notification of Community-based Epidemics (ESSENCE) from October 2017 through the present. Depicted are the numbers of persons presenting to Emergency Departments according to patient location (Denton region) with self-reported chief complaints of influenza-like illness.

Figure 8. Pneumonia and Influenza Mortality from the National Center for Health Statistics Mortality Surveillance System: Week ending September 28, 2019

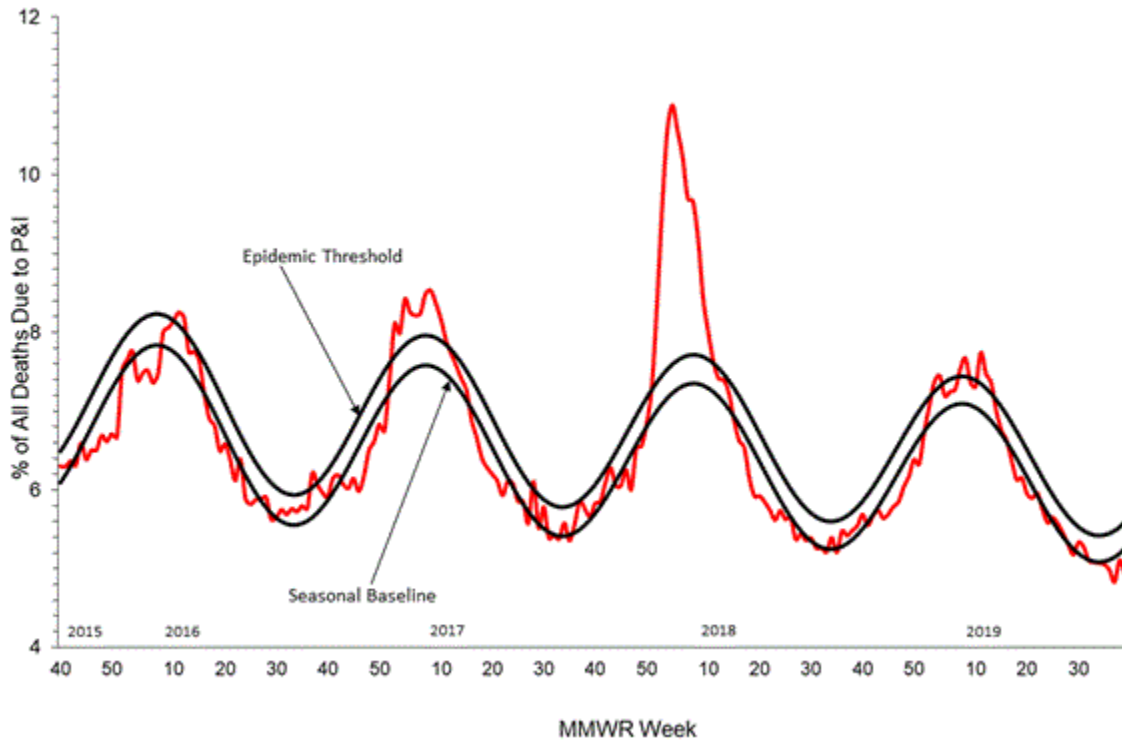


Figure 9. Weekly Influenza Activity Estimates Reported by State and Territorial Epidemiologists: Week 40 – Week Ending October 5, 2019

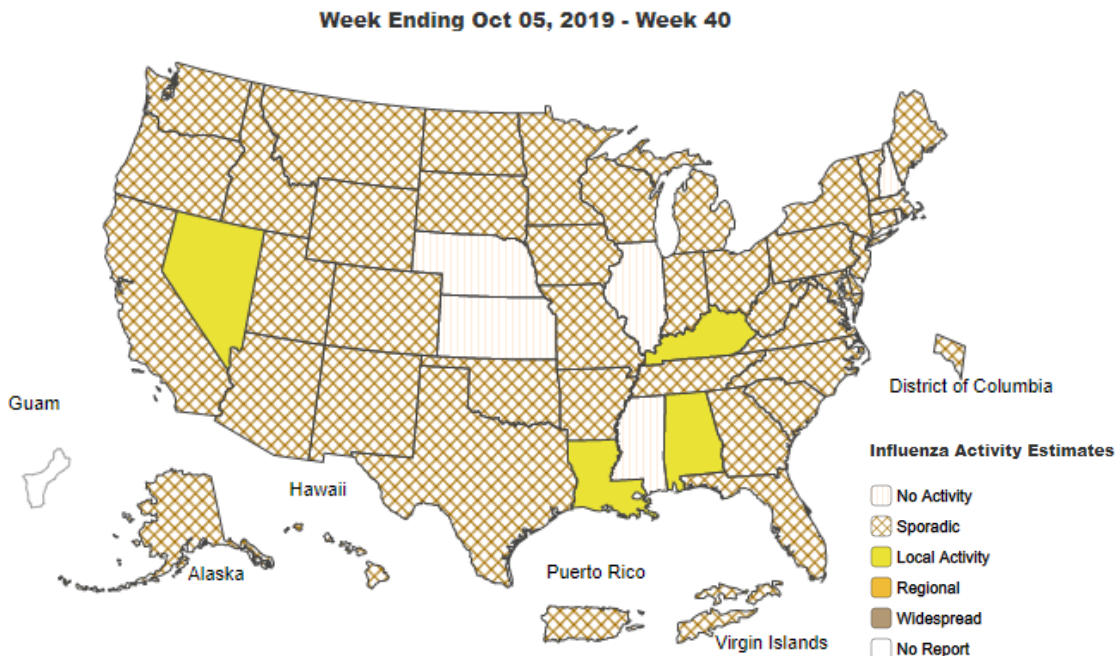
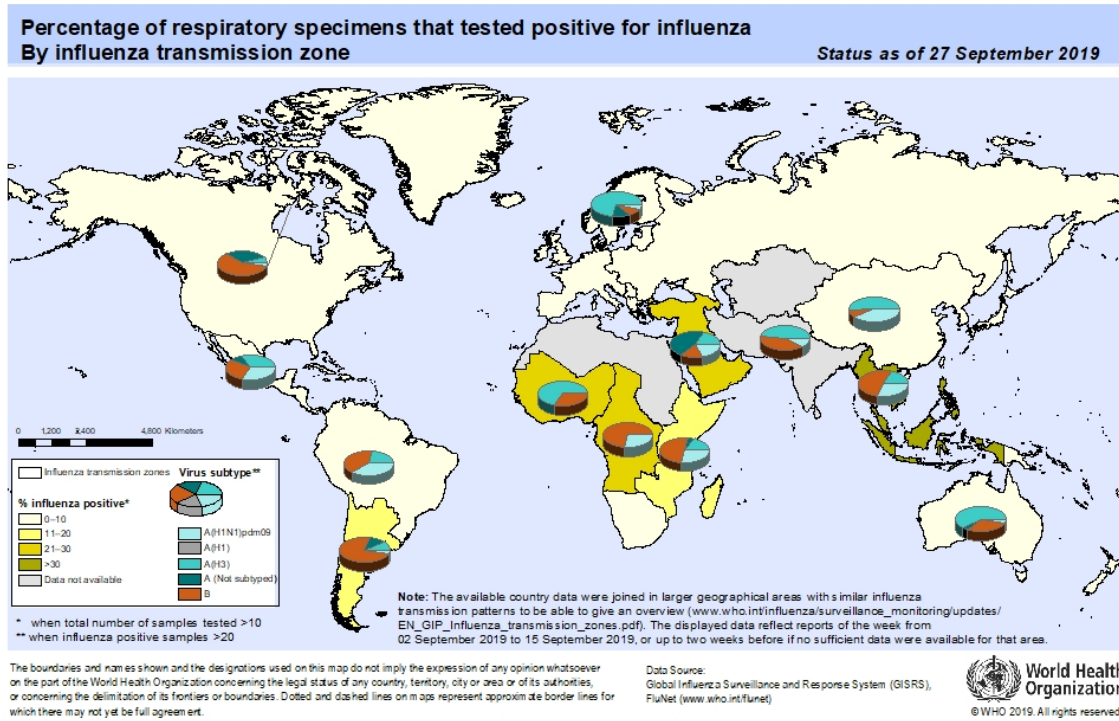


Figure 10. Percentage of Respiratory Specimens that tested Positive for Influenza: WHO, based on data up to September 27, 2019



Please send inquiries to Lily Metzler, MPH – Epidemiologist
Denton County Public Health at Lily.Metzler@dentoncounty.com