

**Denton County Public Health**  
**2019 – 2020 Influenza Surveillance Program**  
**CDC Week 39, Week Ending September 28, 2019**



**Epidemiologic Overview**

**Denton County**

- Minimal influenza activity was reported in Denton County for week 39.
- 10 positive influenza tests (2 Flu A and 8 Flu B) and 1 hospitalization was reported by Denton County sentinel providers for week 39.
- Syndromic surveillance for influenza-like illness (ILI) in Denton County decreased for week 39 when compared to the previous week.

**Texas**

- Influenza activity in the state of Texas remains low for week 39.
- The percentage of visits for ILI as reported by ILINet providers increased to 2.07% in week 39 compared to the previous week.
- The percentage of specimens testing positive for influenza in Texas increased to 1.67% in week 39 compared to the previous week.

**US**

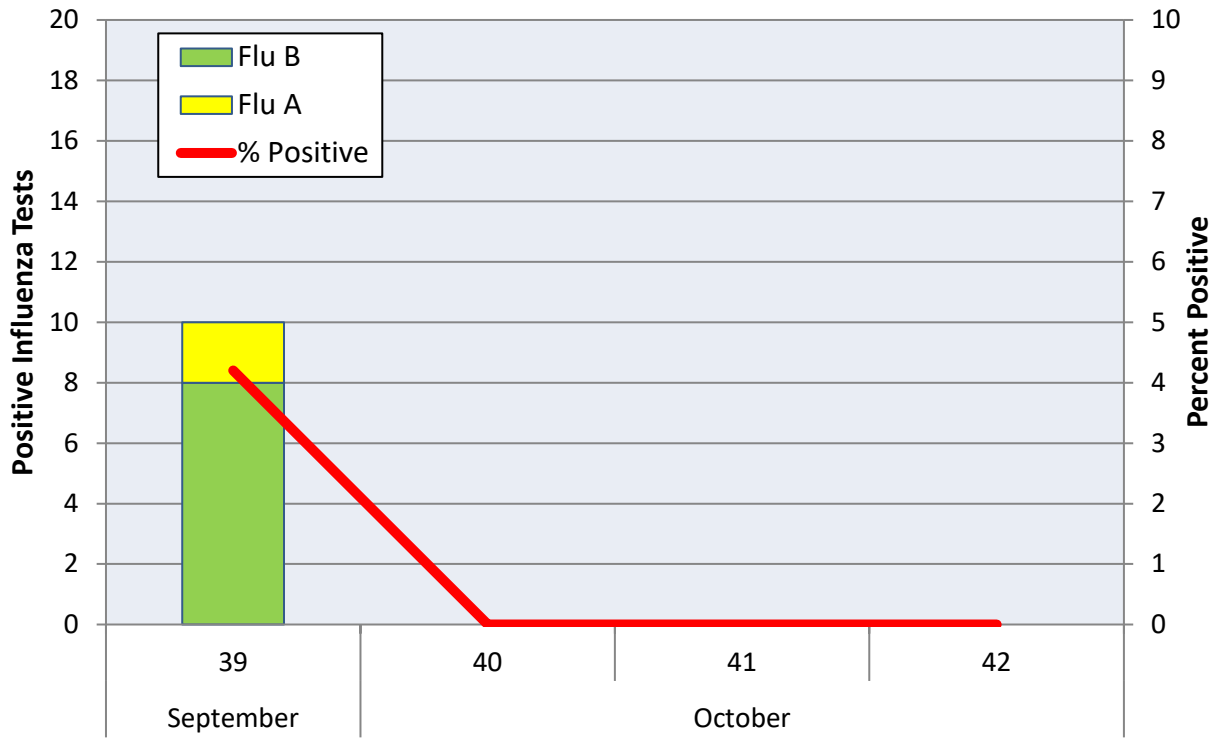
- The proportion of outpatient visits for influenza-like illness (ILI) was 1.3%, which is below the national baseline of 2.2%.
- The proportion of deaths attributed to pneumonia and influenza (P&I) from the National Center for Health Statistics Mortality Surveillance System for week 38 was 5.0%. This percentage is below the epidemic threshold of 5.7% for week 38.

**Figure 1. Influenza Surveillance Summary: Denton County Hospitals and Providers**

Week Ending	9/28/19	9/28/19 - Present
<b>CDC Week</b>	39	
<b>Influenza Tests Performed Weekly</b>	238	238
<b>Total Positive Influenza Tests</b>	10	10
<b>Percent Positive Influenza Tests*</b>	4.2%	
<b>Positive A Influenza</b>	2	2
<b>Positive B Influenza</b>	8	8
<b>Non-differentiated Influenza</b>	0	0
<b>Influenza Hospitalizations</b>	1	1
<b>Influenza-associated Pediatric Deaths</b>	0	0
<b>Influenza-associated Adult Deaths</b>	0	0

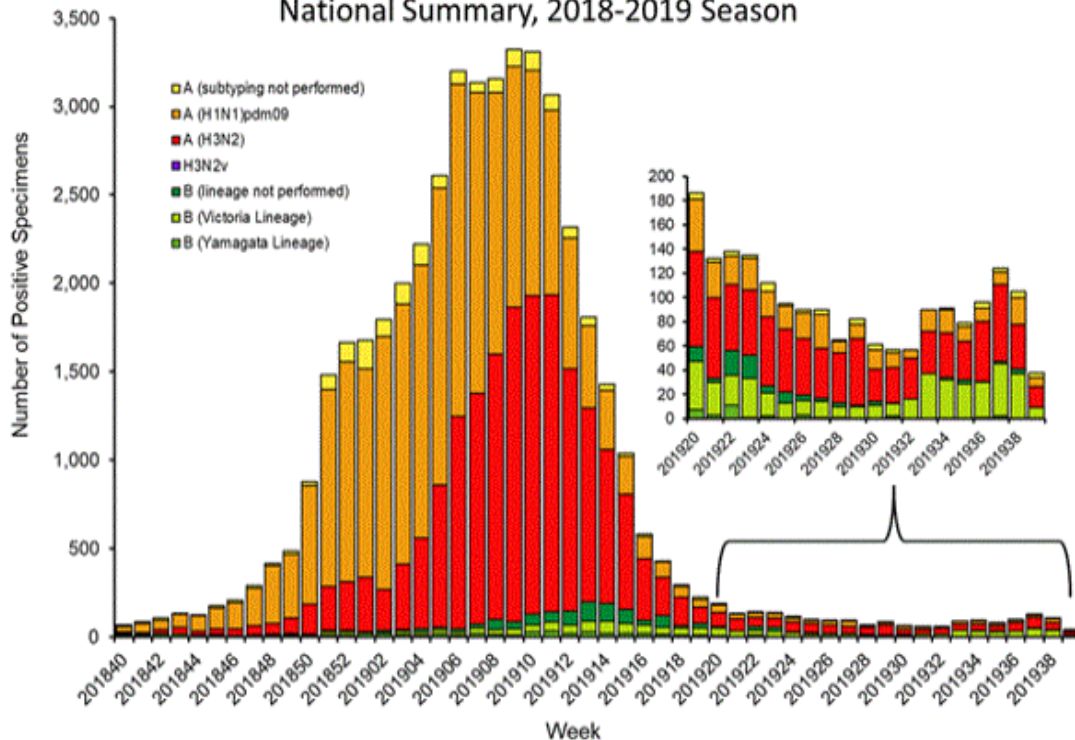
\* Percent positive tests only includes positive tests from providers reporting number of tests performed weekly

**Figure 2. Influenza Positive Tests and Percent Positive, Denton County Hospitals and Providers, 2019-2020 Season**

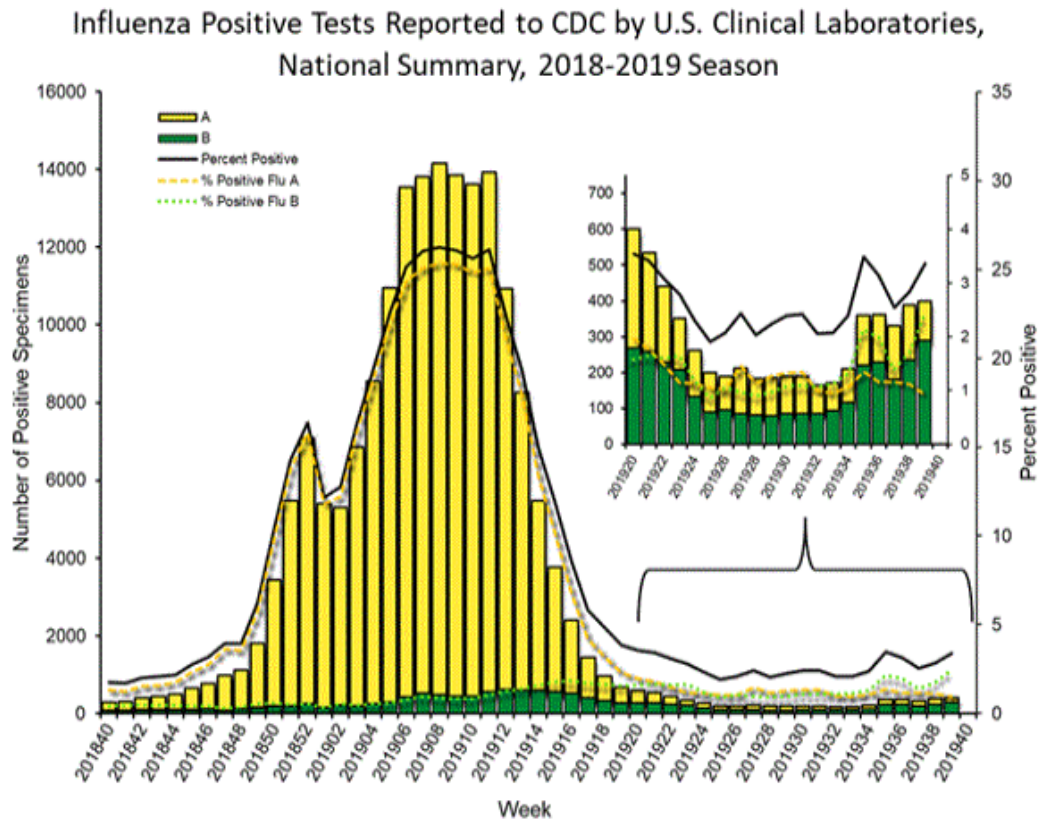


**Figure 3. Influenza Positive Tests Reported to CDC by U.S. Public Health Laboratories, National Summary, 2018-2019 Season**

Influenza Positive Tests Reported to CDC by U.S. Public Health Laboratories, National Summary, 2018-2019 Season



**Figure 4. Influenza Positive Tests Reported to CDC by U.S. Clinical Laboratories, National Summary, 2018-2019 Season**

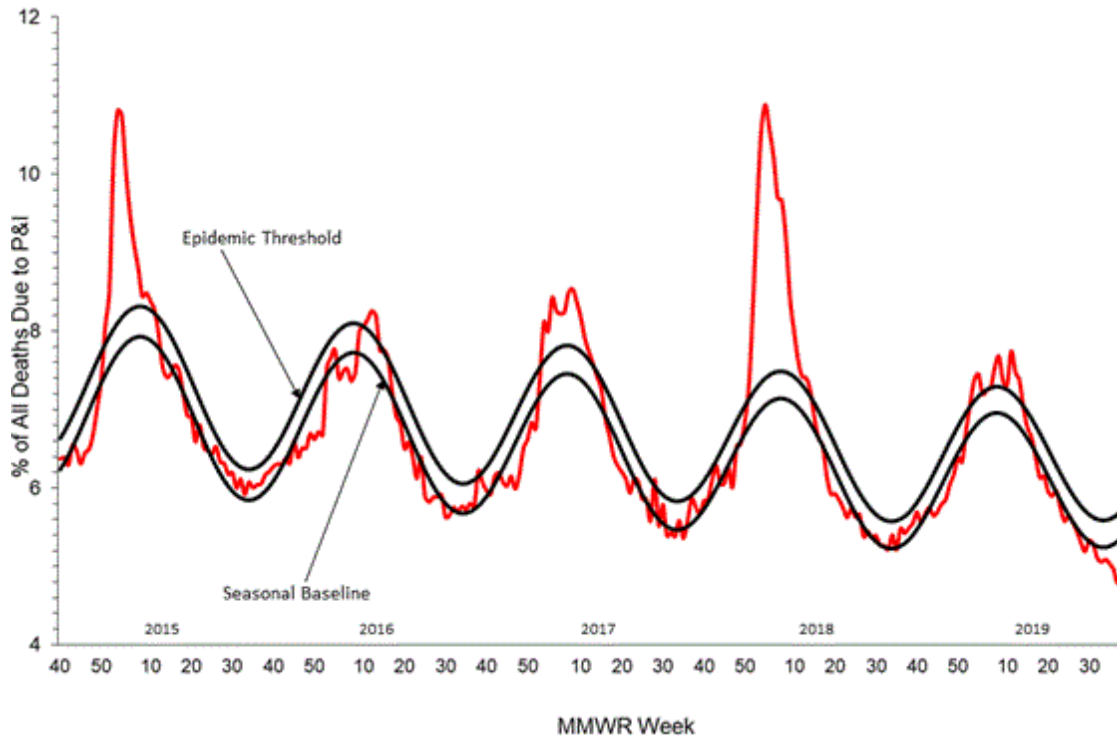


**Figure 5. U.S. Virologic Surveillance, Week 39**

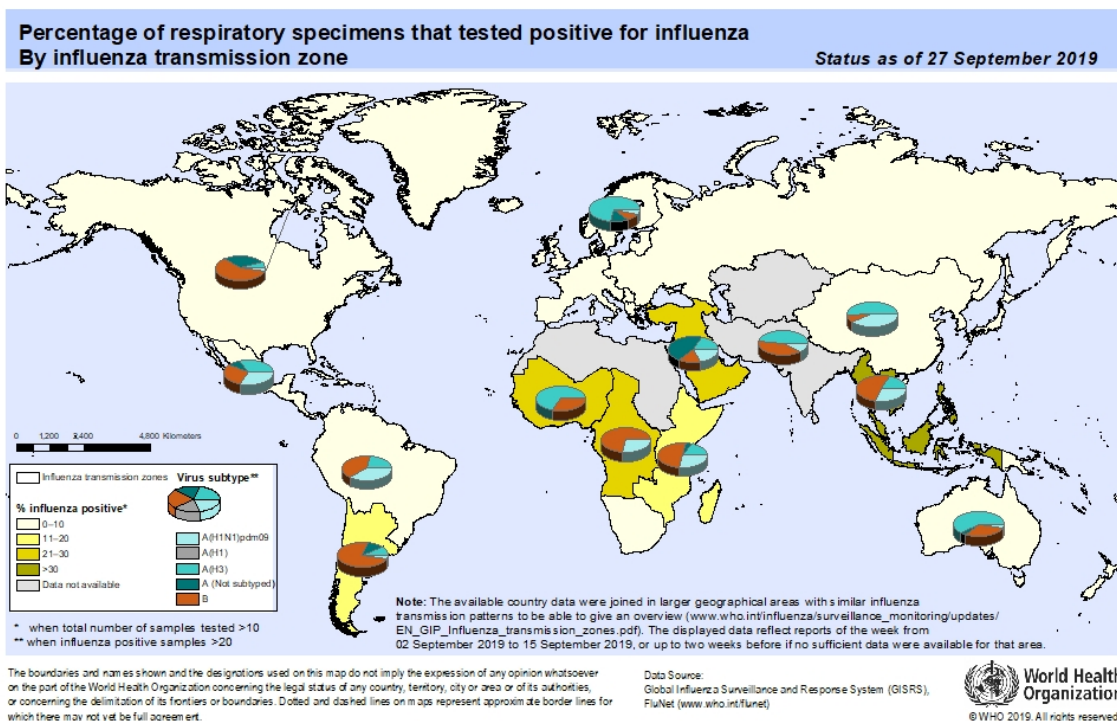
	Week 39	Data Cumulative since May 19, 2018 (week 29)
No. of specimens tested	11,855	200,654
No. of positive specimens (%)	399 (3.4%)	5,320 (2.7%)
<i>Positive specimens by type</i>		
Influenza A	110 (27.6%)	2,443 (45.9%)
Influenza B	289 (72.4%)	2,877 (54.1%)



**Figure 8. Pneumonia and Influenza Mortality from the National Center for Health Statistics Mortality Surveillance System: Week ending September 21, 2019**



**Figure 9. Percentage of Respiratory Specimens that tested Positive for Influenza: WHO, based on data up to September 27, 2019**



**Please send inquiries to Lily Metzler, MPH – Epidemiologist  
Denton County Public Health at [Lily.Metzler@dentoncounty.com](mailto:Lily.Metzler@dentoncounty.com)**