

Denton County Public Health

2022 – 2023 Influenza Surveillance Program

CDC Week 44, Week Ending November 5, 2022



Epidemiologic Overview

Denton County

- High influenza activity was reported in Denton County for week 44.
- 181 positive influenza tests (157 Flu A and 24 Flu B) and 9 hospitalizations were reported by Denton County sentinel providers for week 44.
- Syndromic surveillance for influenza-like illness (ILI) in Denton County increased for week 44 when compared to the previous week.
- 0 influenza-associated deaths have been reported in Denton County for the 2022-2023 season.

Texas

- Intensity of influenza-like illness in the state of Texas was very high for week 44.
- The percentage of visits for ILI as reported by ILINet providers increased to 7.84% in week 44 compared to the previous week.
- The percentage of specimens testing positive for influenza by hospital laboratories in Texas increased to 28.97% in week 44 compared to the previous week.

US

- Early increases in seasonal influenza activity continue nationwide. The southeastern and south-central areas of the country are reporting the highest levels of activity followed by the Mid-Atlantic and the south-central West Coast regions.
- The majority of influenza viruses detected are A(H3N2).
- The percentage of outpatient visits for influenza-like illness (ILI) was 5.5%, which is above the national baseline of 2.5%.
- The percentage of specimens testing positive in clinical labs for influenza in the US was 12.8% for week 44.
- The proportion of deaths attributed to pneumonia, influenza, or COVID-19 (PIC) from the National Center for Health Statistics Mortality Surveillance System for week 44 was 9.0%. This percentage is above the epidemic threshold of 6.1% for week 44.

Figure 1. Influenza Surveillance Summary: Denton County Hospitals and Providers

Week Ending	10/8/22	10/15/22	10/22/22	10/29/22	11/5/22	11/21/22	10/2/22-10/29/22
CDC Week	40	41	42	43	44	45	
Influenza Tests Performed Weekly	587	614	661	825	1153		3840
Total Positive Influenza Tests	36	43	46	85	181		391
Percent Positive Influenza Tests*	6.1%	7.00%	6.96%	10.3%	15.7%		
Positive A Influenza	16	21	30	54	157		278
Positive B Influenza	20	22	16	31	24		113
Non-differentiated Influenza	0	0	0	0	0		0
Influenza Hospitalizations	9	5	0	4	9		27
Influenza-associated Pediatric Deaths	0	0	0	0	0		0
Influenza-associated Adult Deaths	0	0	0	0	0		0

* Percent positive tests only includes positive tests from providers reporting number of tests performed weekly

Figure 2. Influenza Positive Tests and Percent Positive, Denton County Hospitals and Providers, 2022-2023 Season

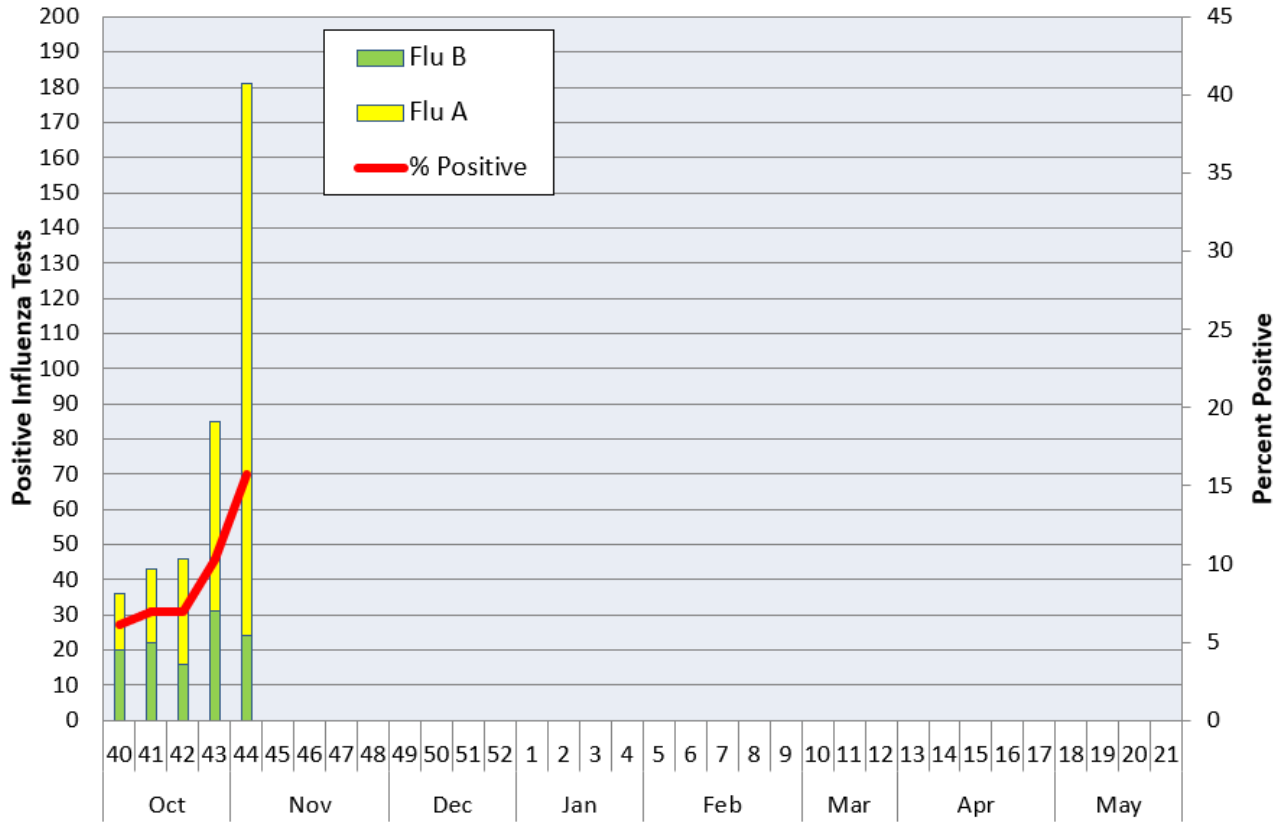


Figure 3. Seasonal Comparison of Influenza Percent Positive, Denton County, 2020 – 2023

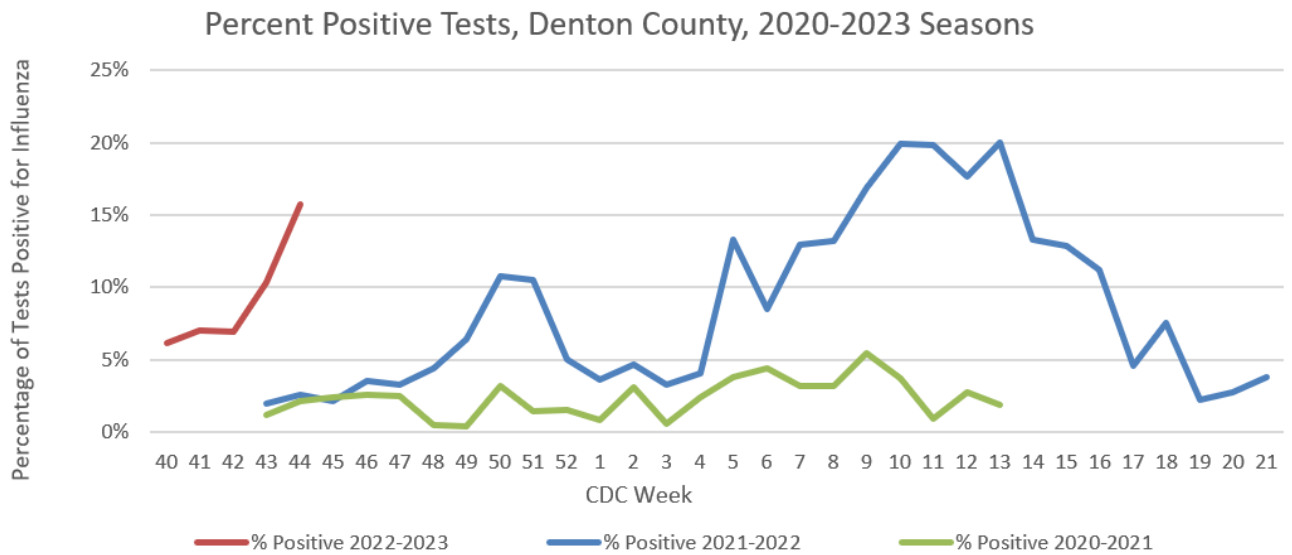
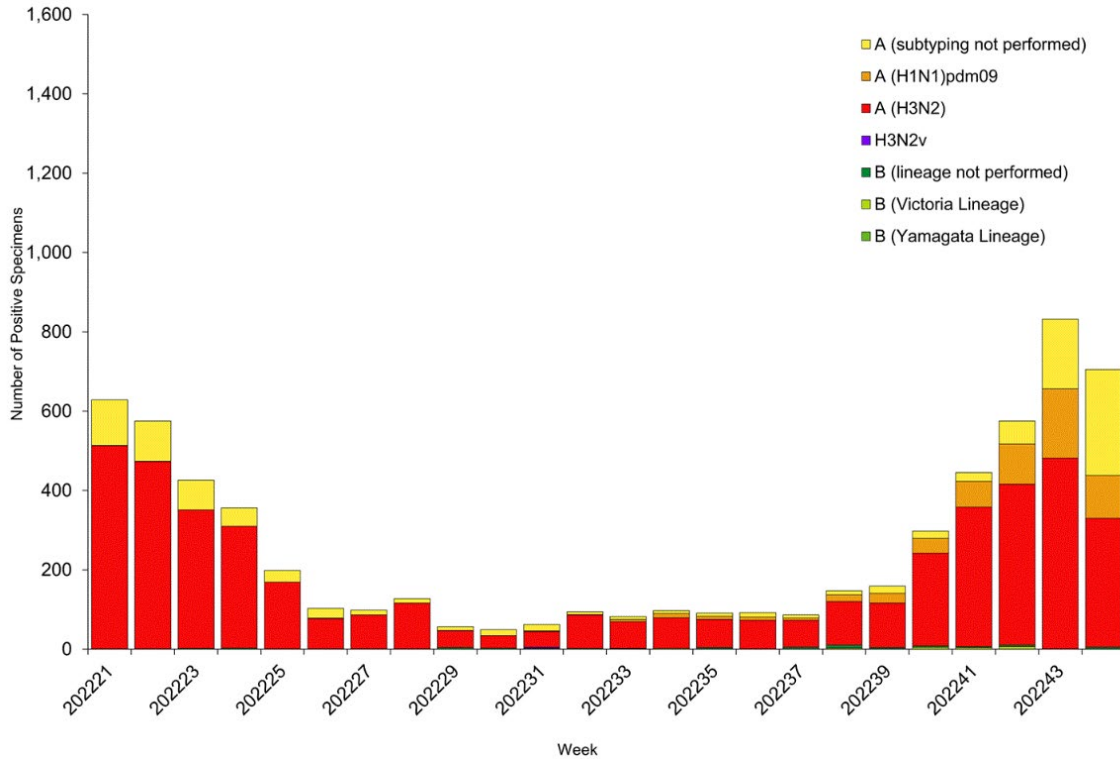
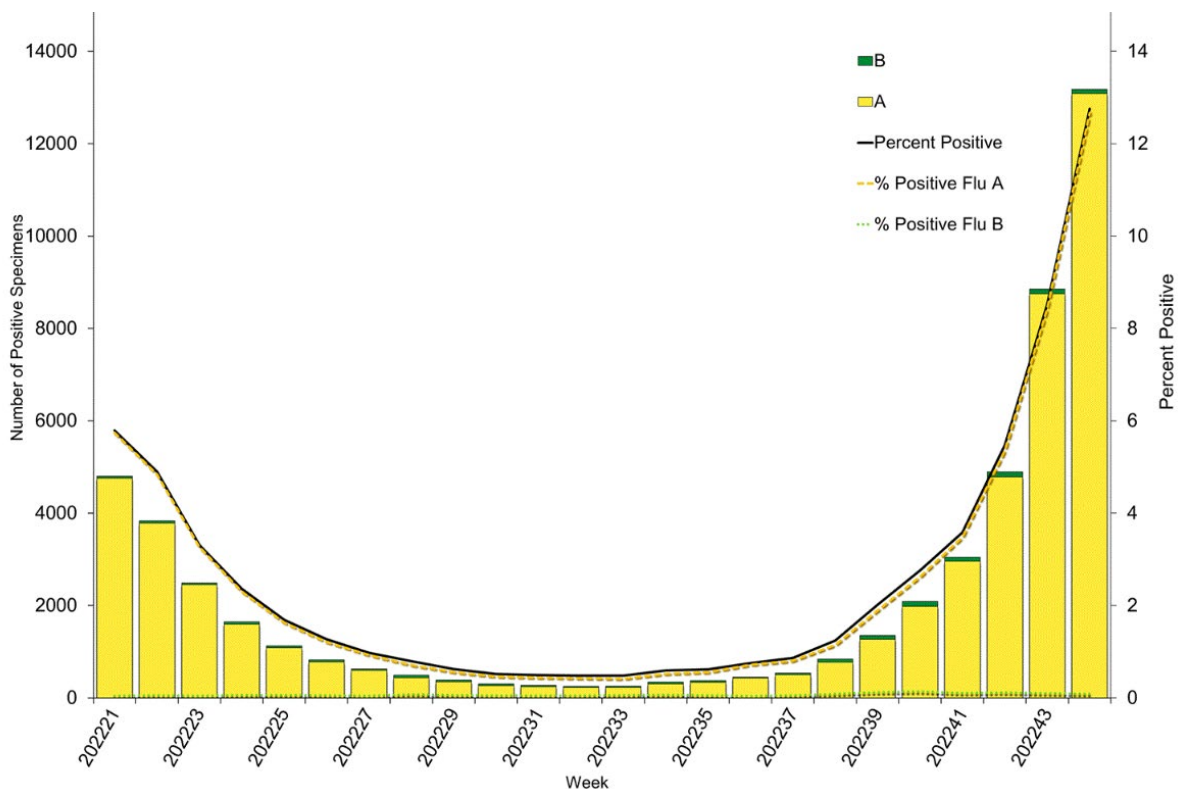


Figure 4. Influenza Positive Tests Reported to CDC by U.S. Public Health Laboratories, National Summary, May 22, 2022- November 5, 2022



Source: <https://www.cdc.gov/flu/weekly/index.htm>

Figure 5. Influenza Positive Tests Reported to CDC by U.S. Clinical Laboratories, National Summary, May 22, 2022- November 5, 2022



Source: <https://www.cdc.gov/flu/weekly/index.htm>

Figure 6. 2022-2023 Influenza Vaccine Composition, Northern Hemisphere:

Egg-based vaccine composition recommendations:

- an A/Victoria/2570/2019 (H1N1) pdm09-like virus;
- an A/Darwin/9/2021 (H3N2)-like virus (updated);
- a B/Austria/1359417/2021-like virus (B/Victoria lineage) (updated);
- a B/Phuket/3073/2013-like virus (B/Yamagata lineage)

Cell- or recombinant-based vaccine composition recommendations:

- an A/Wisconsin/588/2019 (H1N1) pdm09-like virus;
- an A/Darwin/6/2021 (H3N2)-like virus (updated);
- a B/Austria/1359417/2021-like virus (B/Victoria lineage) (updated);
- a B/Phuket/3073/2013-like virus (B/Yamagata lineage)

Source: <https://www.cdc.gov/flu/season/faq-flu-season-2022-2023.htm>

Figure 7. U.S. Virologic Surveillance, Week 44

	Week 44	Data Cumulative since October 2, 2022 (Week 40)
No. of specimens tested	103,311	457,029
No. of positive specimens (%)	13,178 (12.8%)	32,046 (7.0%)
<i>Positive specimens by type</i>		
Influenza A	13,086 (99.3%)	31,558 (98.5%)
Influenza B	92 (0.7%)	488 (1.5%)

Source: <https://www.cdc.gov/flu/weekly/index.htm>

Figure 8. ESSENCE Syndromic Surveillance for Influenza-like Illness: Denton County, August 01, 2022- November 5, 2022

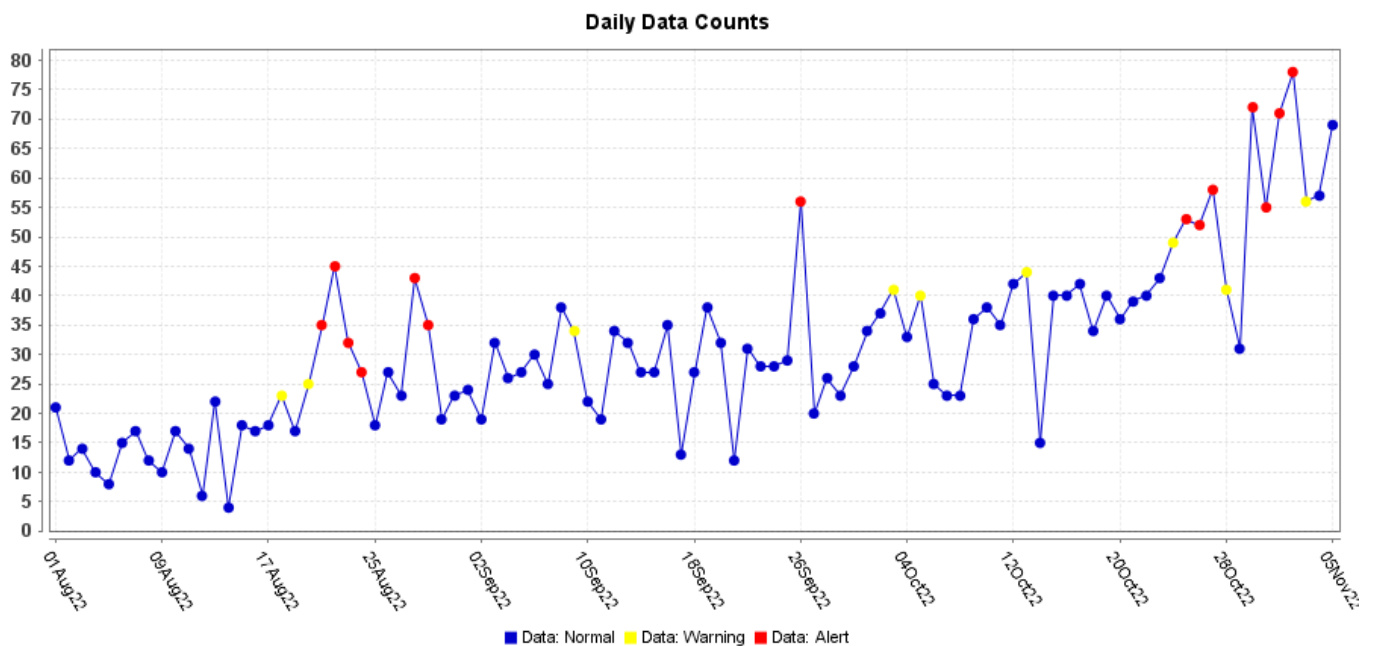
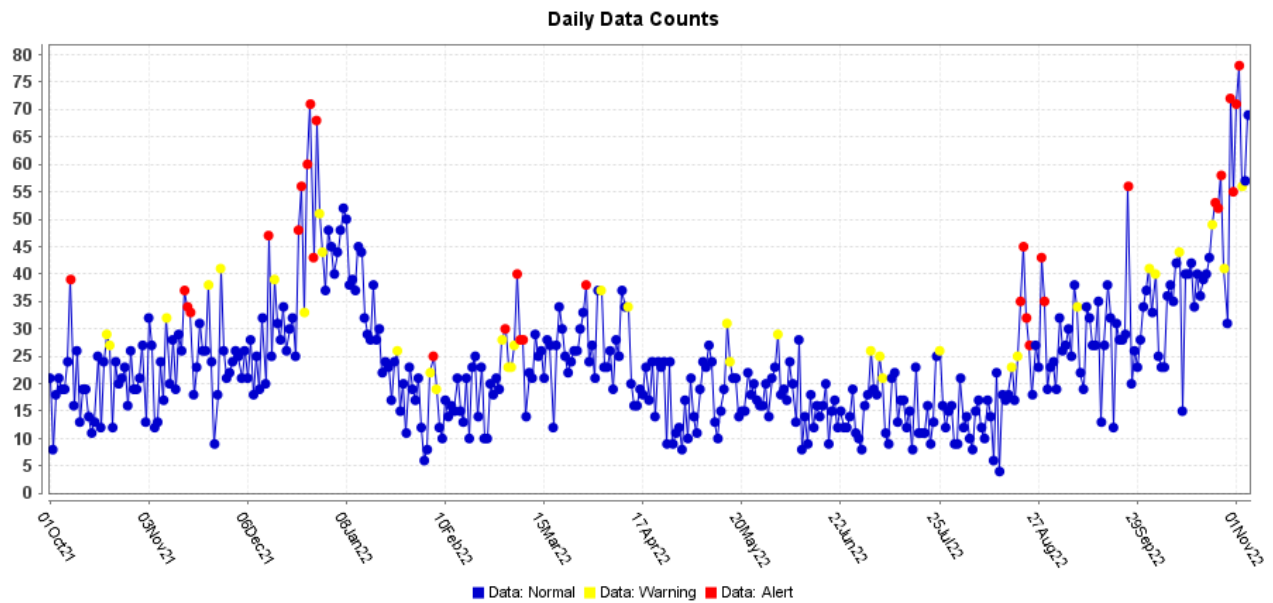
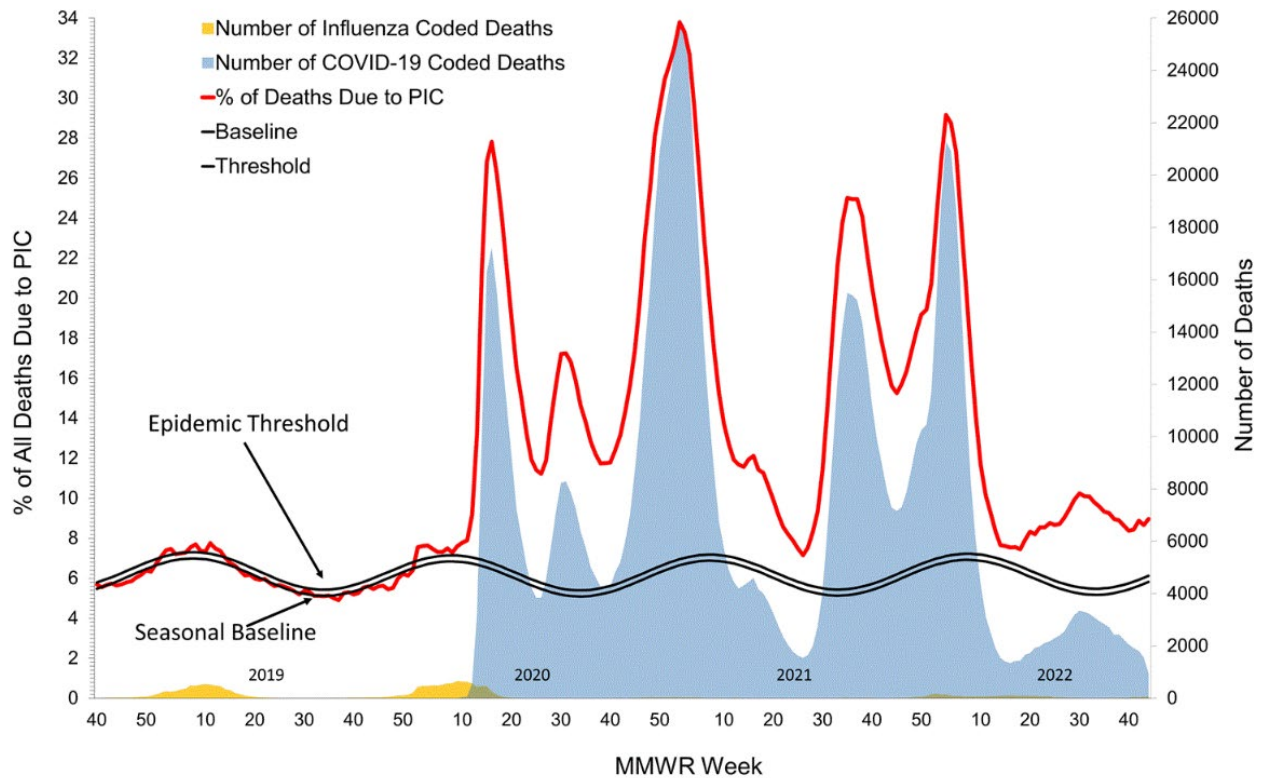


Figure 9. ESSENCE Syndromic Surveillance for Influenza-like Illness: Denton County, October 01, 2021 – November 5, 2022



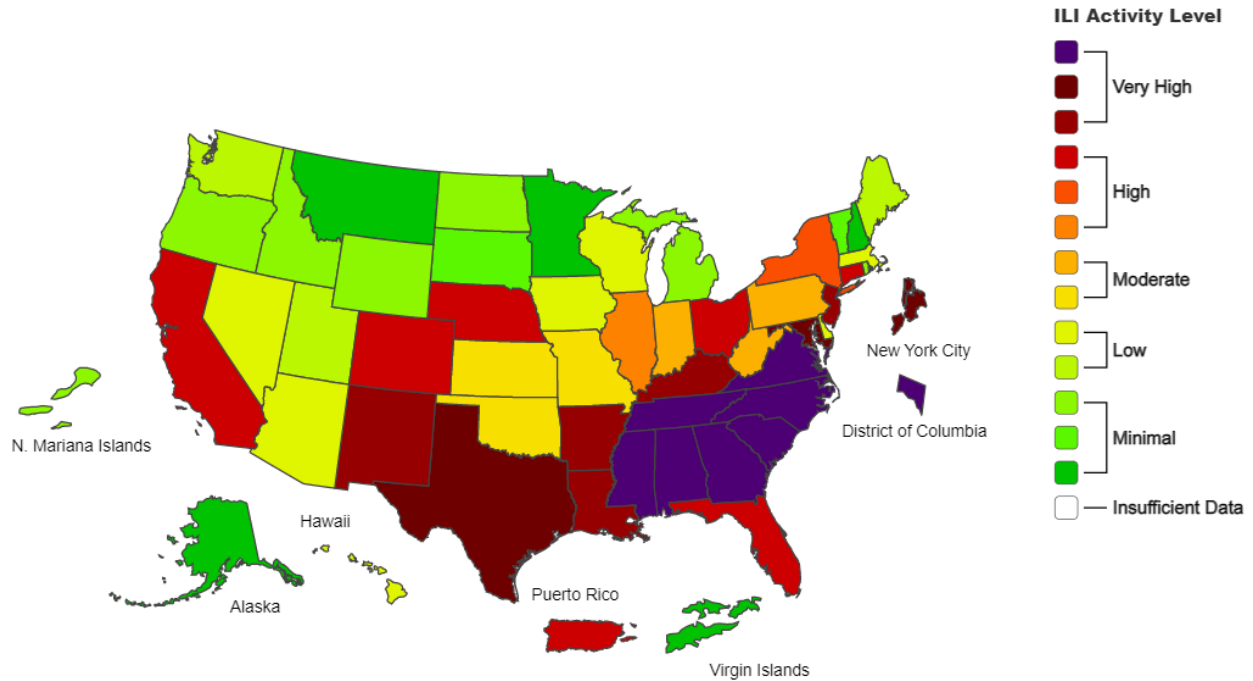
Data obtained from hospitals participating in the Electronic Surveillance System for the Early Notification of Community-based Epidemics (ESSENCE) from October 2021 through the present. Depicted are the numbers of persons presenting to Emergency Departments according to patient location (Denton region) with self-reported chief complaints of influenza-like illness.

Figure 10. Pneumonia, Influenza, and COVID-19 Mortality from the National Center for Health Statistics Mortality Surveillance System: Data as of November 3, 2022



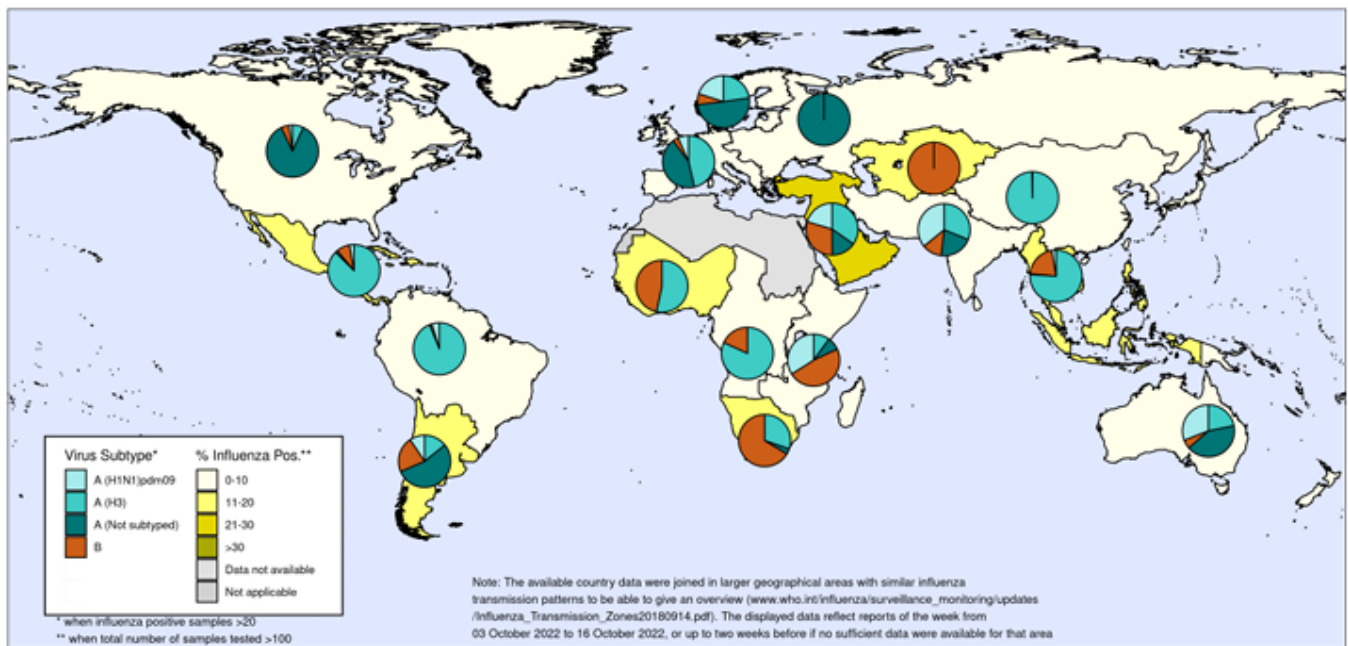
Source: <https://www.cdc.gov/flu/weekly/index.htm>

Figure 11. 2022-23 Influenza Season: Week 44 ending November 5, 2022



Source: <https://www.cdc.gov/flu/weekly/index.htm>

Figure 12. Percentage of Respiratory Specimens that tested Positive for Influenza: WHO, Status as of October, 28, 2022



The boundaries and names shown and the designations used on this map do not imply the expression of any opinion whatsoever on the part of the World Health Organization concerning the legal status of any country, territory, city or area or of its authorities, or concerning the delimitation of its frontiers or boundaries. Dotted and dashed lines on maps represent approximate border lines for which there may not yet be full agreement.



Data source: Global Influenza Surveillance and Response System (GISRS), FluNet (www.who.int/flu-net)
Copyright WHO 2022. All rights reserved.



Please direct inquiries to Denton County Public Health at
epidemiology@dentoncounty.com or 940-349-2909