

Denton County Public Health

2021 – 2022 Influenza Surveillance Program

CDC Week 16, Week Ending April 23, 2022



Epidemiologic Overview

Denton County

- Moderate influenza activity was reported in Denton County for week 16.
- 28 positive influenza tests (27 Flu A and 1 Flu B) and 0 hospitalizations were reported by Denton County sentinel providers for week 16.
- Syndromic surveillance for influenza-like illness (ILI) in Denton County decreased for week 16 when compared to the previous week.
- 0 influenza-associated deaths have been reported in Denton County for the 2021-2022 season.

Texas

- Intensity of influenza-like illness in the state of Texas was minimal for week 16.
- The percentage of visits for ILI as reported by ILINet providers remained at 2.33% in week 16 compared to the previous week.
- The percentage of specimens testing positive for influenza by hospital laboratories in Texas was 13.40% for week 16.

US

- Influenza activity varies by region. Influenza activity continues to increase in some areas of the country.
- The first human detection of avian influenza A(H5) in the U.S. was reported this week.
- The majority of influenza viruses detected are A(H3N2).
- The proportion of outpatient visits for influenza-like illness (ILI) was 2.1%, which is below the national baseline of 2.5%.
- The percentage of specimens testing positive in clinical labs for influenza in the US was 7.8% for Week 16.
- The proportion of deaths attributed to pneumonia, influenza, or COVID-19 (PIC) from the National Center for Health Statistics Mortality Surveillance System for week 16 was 6.8%. This percentage is **equal** to the epidemic threshold of 6.8% for week 16.

Figure 1. Influenza Surveillance Summary: Denton County Hospitals and Providers

Week Ending	03/19/22	03/26/22	04/02/22	04/09/22	04/16/22	4/23/22	10/24/21 - 04/23/22
CDC Week	11	12	13	14	15	16	
Influenza Tests Performed Weekly	363	356	345	330	334	249	8708
Total Positive Influenza Tests	72	63	69	44	43	28	821
Percent Positive Influenza Tests*	19.8%	17.7%	20.0%	13.3%	12.9%	11.2%	
Positive A Influenza	69	61	62	40	42	27	726
Positive B Influenza	3	2	7	4	1	1	95
Non-differentiated Influenza	0	0	0	0	0	0	0
Influenza Hospitalizations	7	5	20	19	3	0	105
Influenza-associated Pediatric Deaths	0	0	0	0	0	0	0
Influenza-associated Adult Deaths	0	0	0	0	0	0	0

* Percent positive tests only includes positive tests from providers reporting number of tests performed weekly

Figure 2. Influenza Positive Tests and Percent Positive, Denton County Hospitals and Providers, 2021-2022 Season

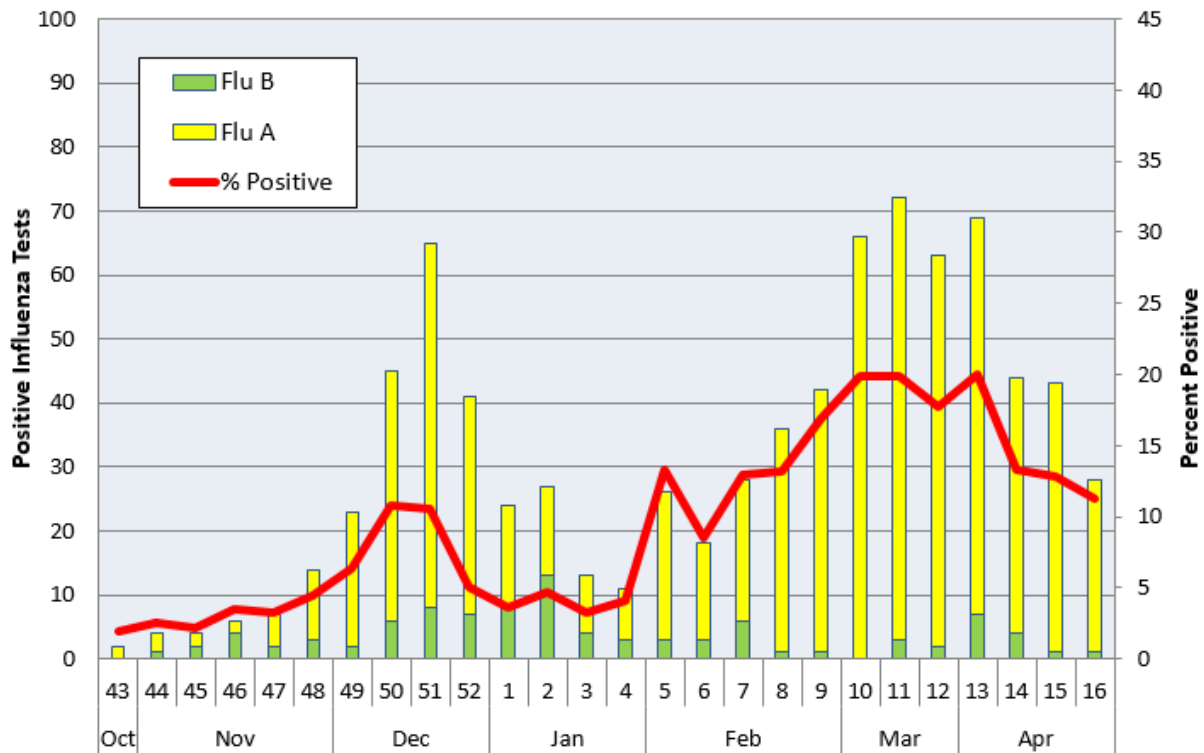


Figure 3. Seasonal Comparison of Influenza Percent Positive, Denton County, 2019 – 2022

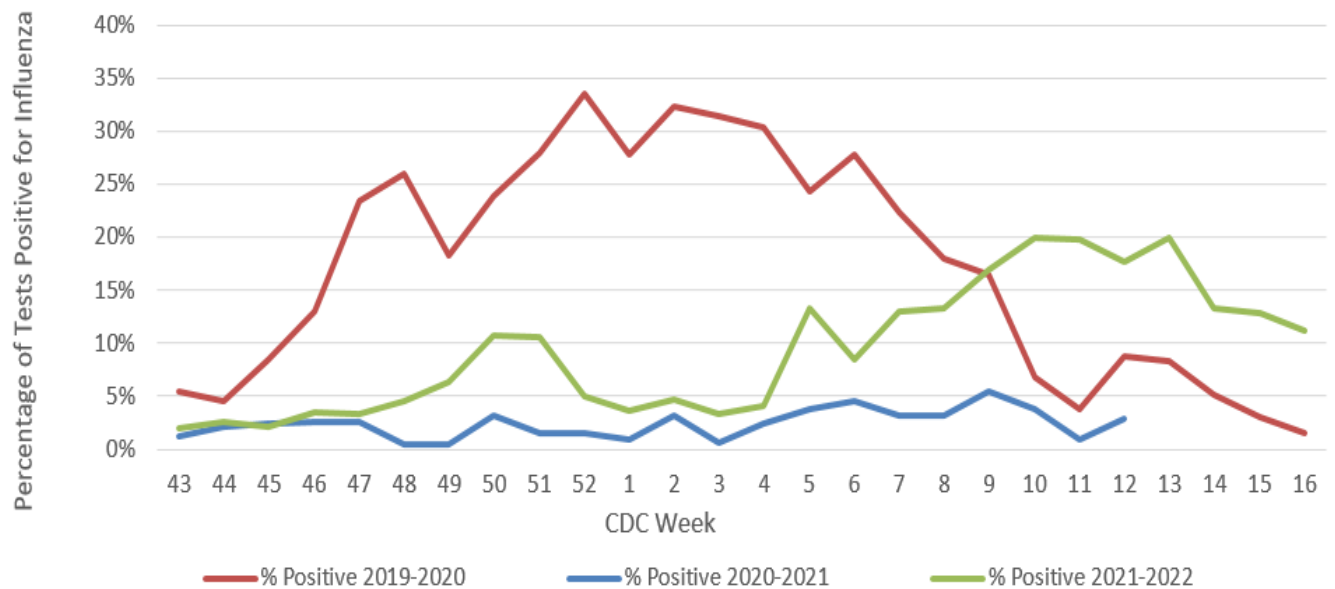
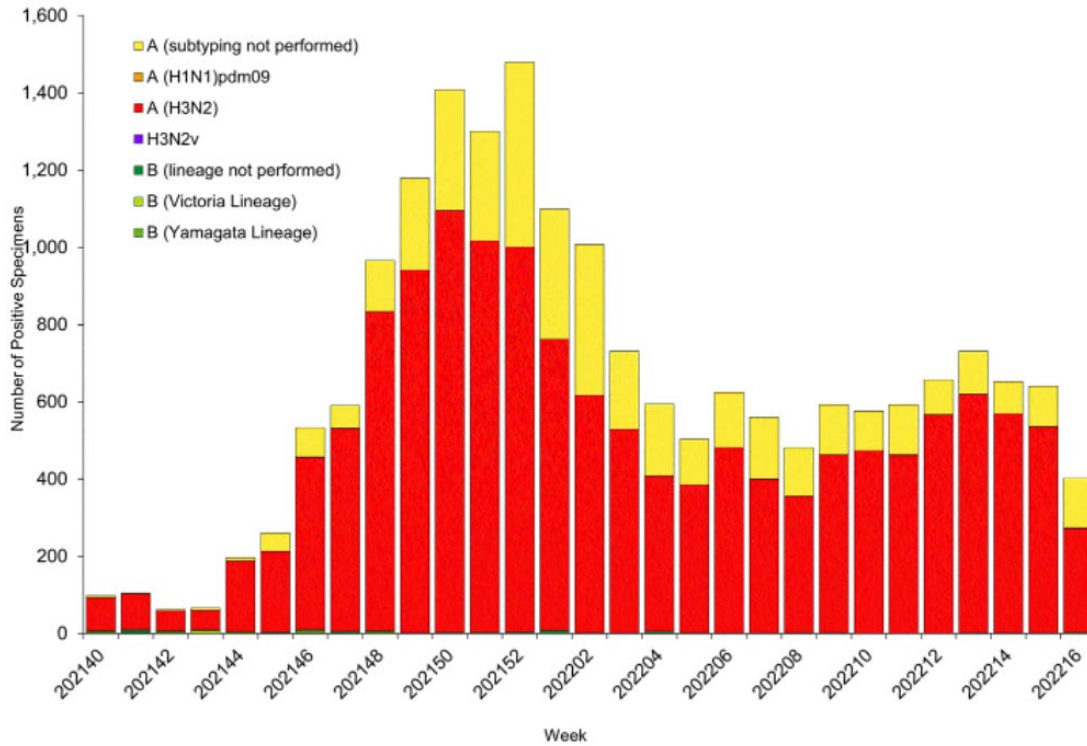
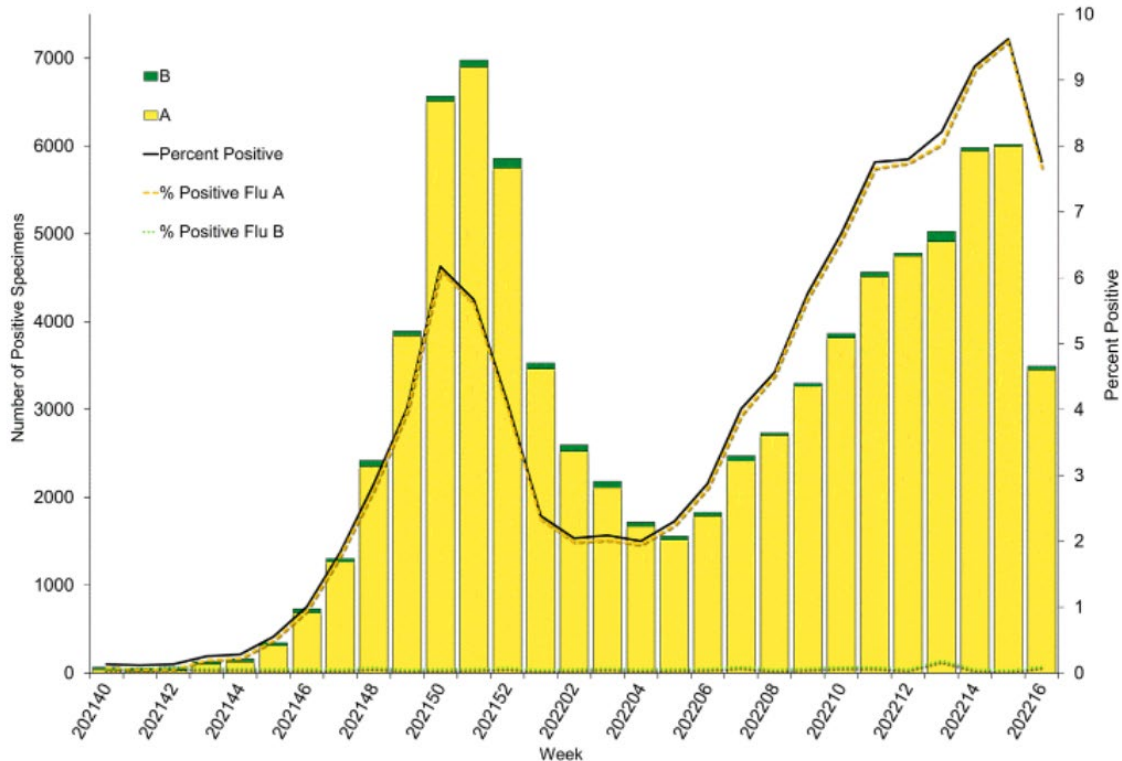


Figure 4. Influenza Positive Tests Reported to CDC by U.S. Public Health Laboratories, National Summary, October 3, 2021- April 23, 2022



Source: <https://www.cdc.gov/flu/weekly/index.htm>

Figure 5. Influenza Positive Tests Reported to CDC by U.S. Clinical Laboratories, National Summary, October 3, 2021- April 23, 2022



Source: <https://www.cdc.gov/flu/weekly/index.htm>

Figure 6. 2021-2022 Influenza Vaccine Composition, Northern Hemisphere:

Egg-based vaccine composition recommendations:

- an A/Victoria/2570/2019 (H1N1) pdm09-like virus;
- an A/Cambodia/e0826360/2020 (H3N2)-like virus;
- a B/Washington/02/2019- like virus (B/Victoria lineage);
- a B/Phuket/3073/2013-like virus (B/Yamagata lineage).

Cell- or recombinant-based vaccine composition recommendations:

- an A/Wisconsin/588/2019 (H1N1) pdm09-like virus;
- an A/Cambodia/e0826360/2020 (H3N2)-like virus;
- a B/Washington/02/2019- like virus (B/Victoria lineage);
- a B/Phuket/3073/2013-like virus (B/Yamagata lineage).

Figure 7. U.S. Virologic Surveillance, Week 16

	Week 16	Data Cumulative since October 3, 2021 (Week 40)
No. of specimens tested	44,994	2,195,426
No. of positive specimens (%)	3,494 (7.8%)	84,202 (3.8%)
<i>Positive specimens by type</i>		
Influenza A	3,451 (98.8%)	82,732 (98.3%)
Influenza B	43 (1.2%)	1,470 (1.7%)

Source: <https://www.cdc.gov/flu/weekly/index.htm>

Figure 8. ESSENCE Syndromic Surveillance for Influenza-like Illness: Denton County, August 01, 2021- April 23, 2022

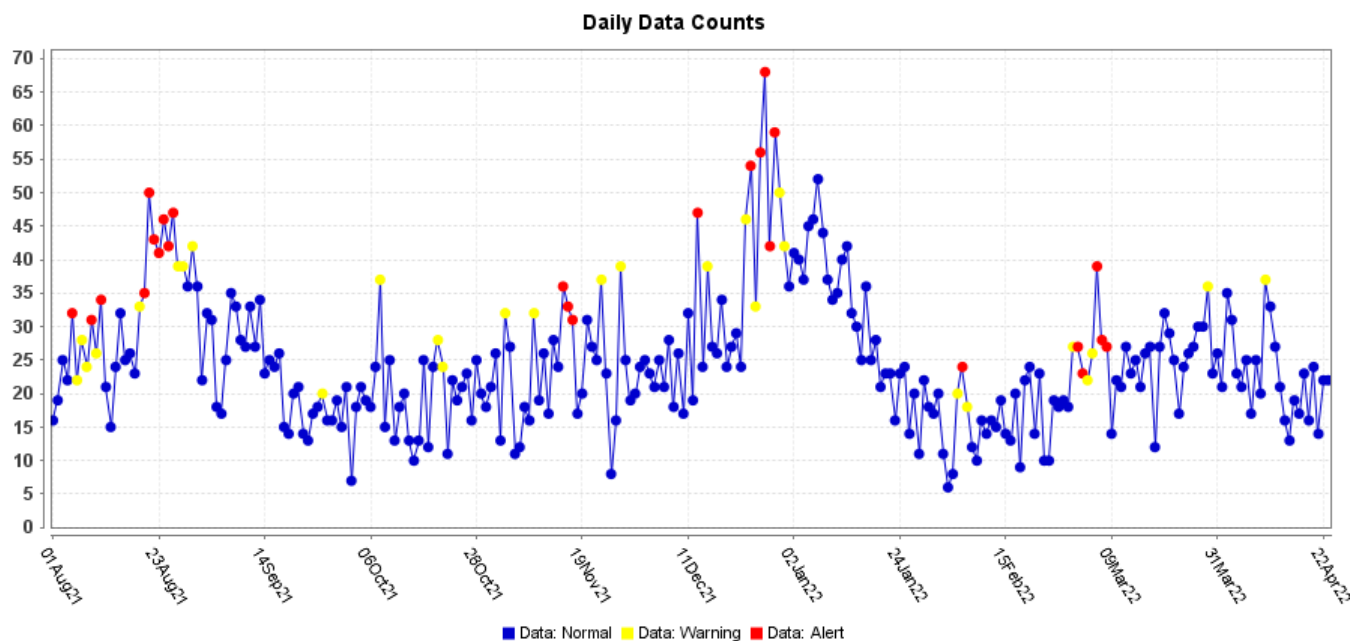
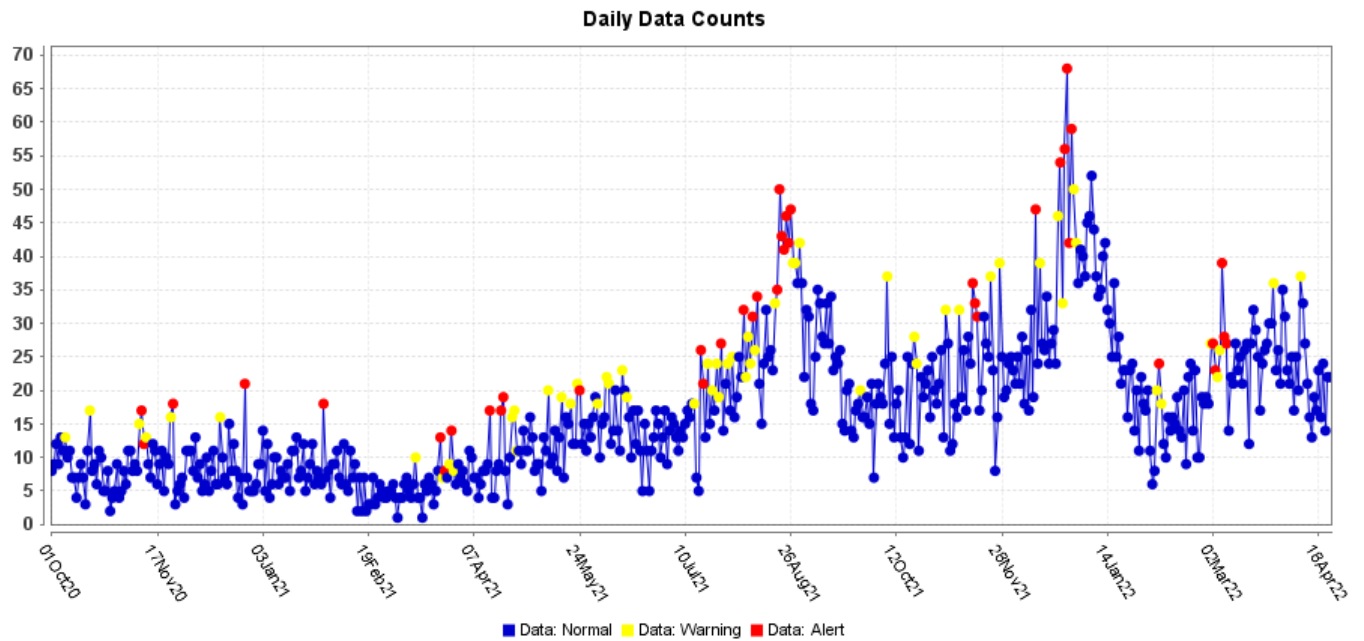
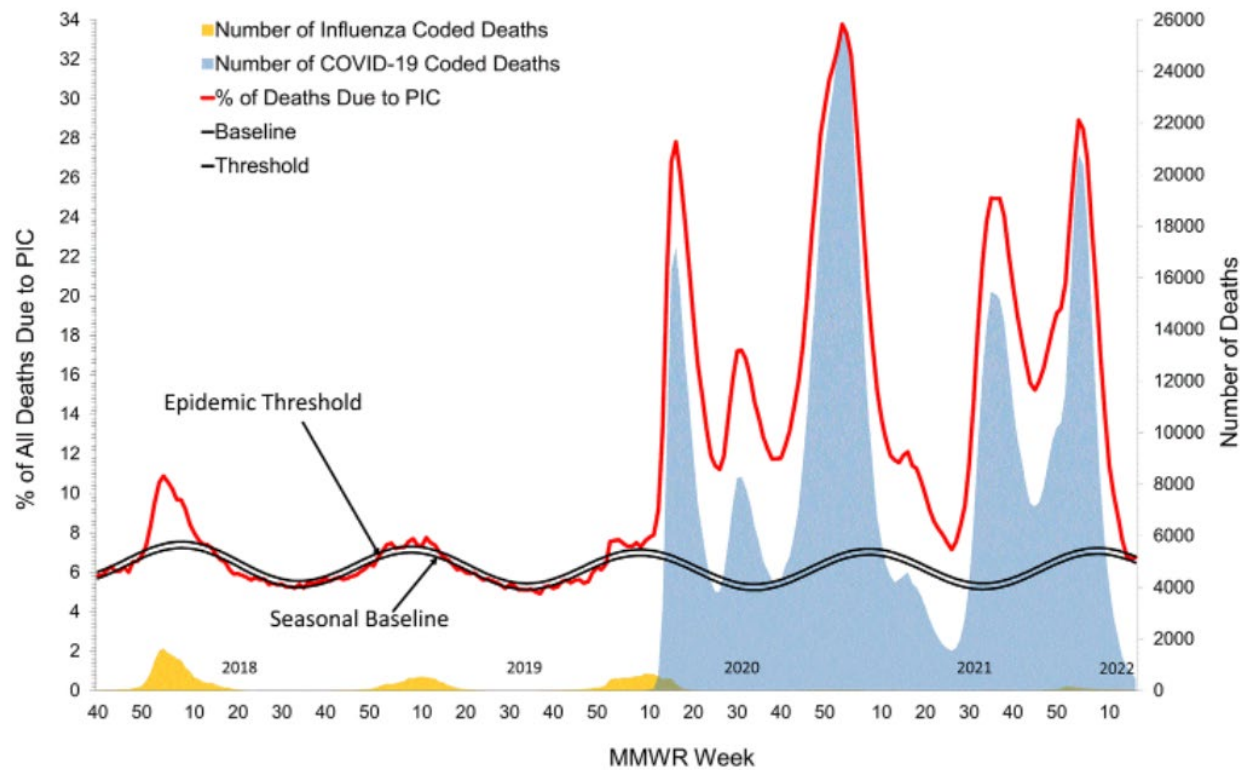


Figure 9. ESSENCE Syndromic Surveillance for Influenza-like Illness: Denton County, October 01, 2020 – April 23, 2022



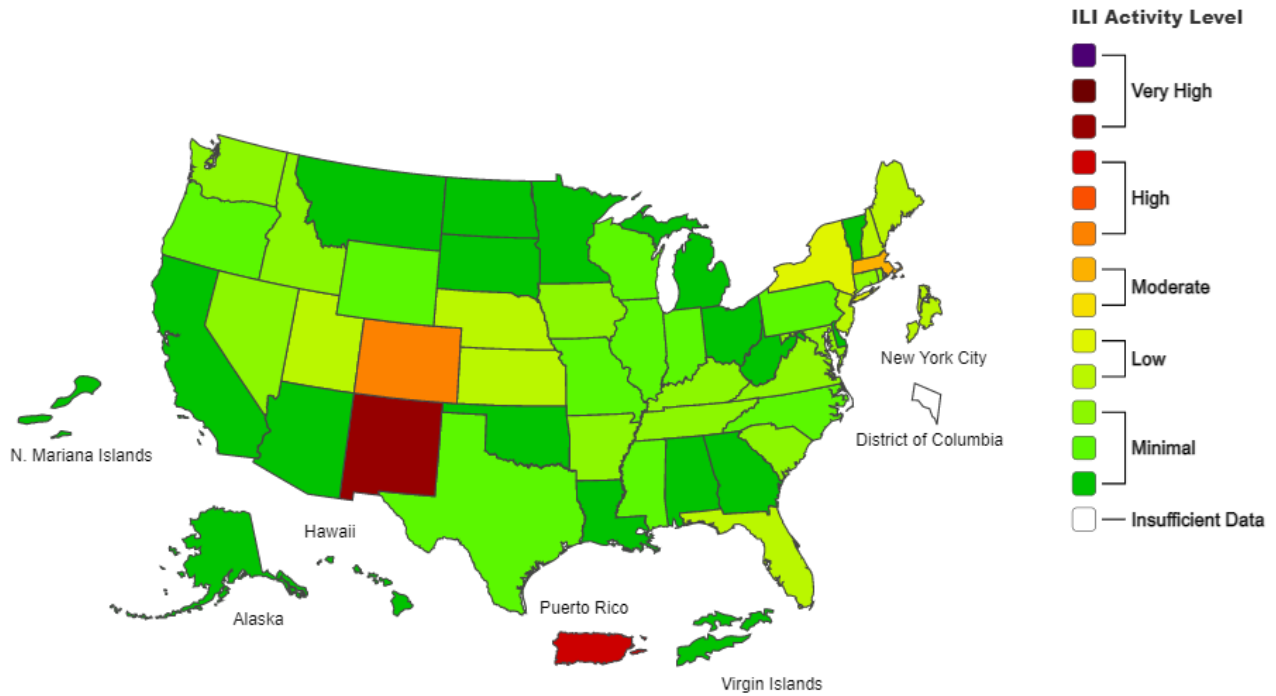
Data obtained from hospitals participating in the Electronic Surveillance System for the Early Notification of Community-based Epidemics (ESSENCE) from October 2020 through the present. Depicted are the numbers of persons presenting to Emergency Departments according to patient location (Denton region) with self-reported chief complaints of influenza-like illness.

Figure 10. Pneumonia and Influenza Mortality from the National Center for Health Statistics Mortality Surveillance System: Data as of April 28, 2022



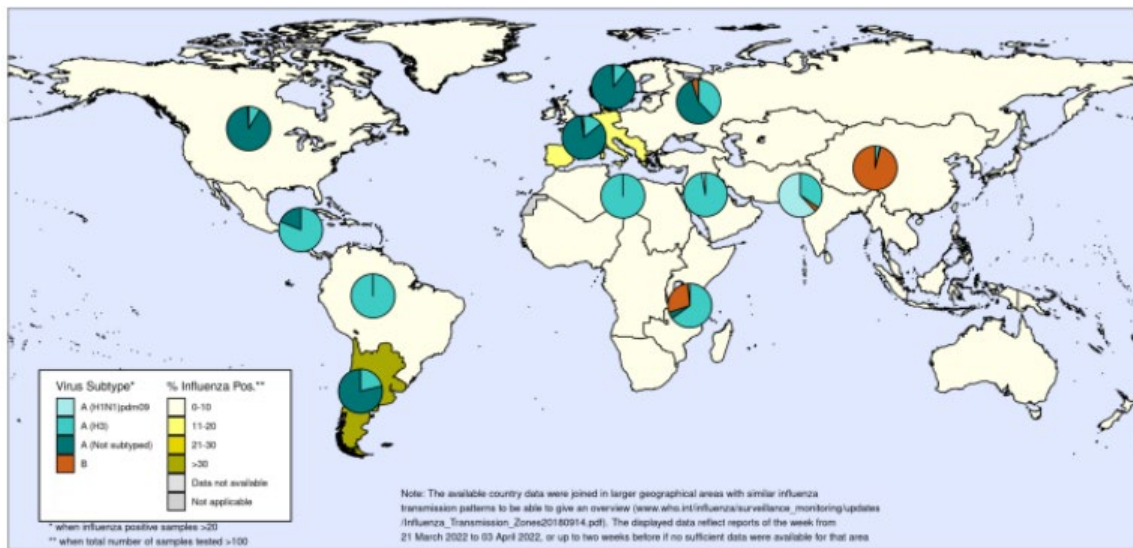
Source: <https://www.cdc.gov/flu/weekly/index.htm>

Figure 11. 2021-22 Influenza Season: Data as April 23, 2022



Source: <https://www.cdc.gov/flu/weekly/index.htm>

Figure 12. Percentage of Respiratory Specimens that tested Positive for Influenza: WHO, Status as of April 14, 2022



The boundaries and names shown and the designations used on this map do not imply the expression of any opinion whatsoever on the part of the World Health Organization concerning the legal status of any country, territory, city or area or of its authorities, or concerning the delimitation of its frontiers or boundaries. Dotted and dashed lines on maps represent approximate border lines for which there may not yet be full agreement.

Data source: Global Influenza Surveillance and Response System (GISRS), FluNet (www.who.int/flu-net)
Copyright WHO 2022. All rights reserved.





Please direct inquiries to Denton County Public Health at
epidemiology@dentoncounty.com or 940-349-2909