

# Denton County Public Health

## 2021 – 2022 Influenza Surveillance Program

### CDC Week 12, Week Ending March 26, 2022



## Epidemiologic Overview

### Denton County

- Moderate influenza activity was reported in Denton County for week 12.
- 63 positive influenza tests (61 Flu A and 2 Flu B) and 5 hospitalizations were reported by Denton County sentinel providers for week 12.
- Syndromic surveillance for influenza-like illness (ILI) in Denton County increased for week 12 when compared to the previous week.
- 0 influenza-associated deaths have been reported in Denton County for the 2021-2022 season.

### Texas

- Intensity of influenza-like illness in the state of Texas was low for week 12.
- The percentage of visits for ILI as reported by ILINet providers decreased to 2.93% in week 12 compared to the previous week.
- The percentage of specimens testing positive for influenza by hospital laboratories in Texas was 17.31% for week 12.

### US

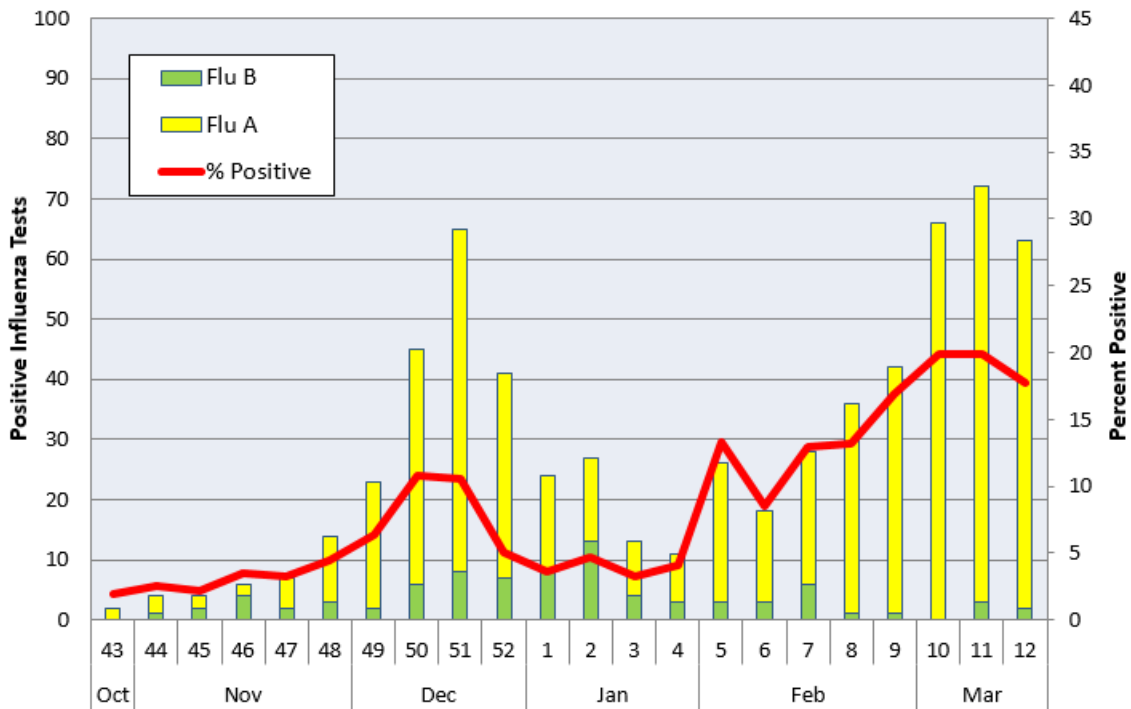
- Influenza activity is still highest in the central and south-central regions of the country but appears to be declining slightly in these regions. Influenza activity is increasing in the northeast and northwest regions.
- The majority of influenza viruses detected are A(H3N2).
- The proportion of outpatient visits for influenza-like illness (ILI) was 1.8%, which is below the national baseline of 2.5%.
- The percentage of specimens testing positive in clinical labs for influenza in the US was 6.5% for Week 12.
- The proportion of deaths attributed to pneumonia, influenza, or COVID-19 (PIC) from the National Center for Health Statistics Mortality Surveillance System for week 12 was 8.3%. This percentage is **above** the epidemic threshold of 7.1% for week 12.

**Figure 1. Influenza Surveillance Summary: Denton County Hospitals and Providers**

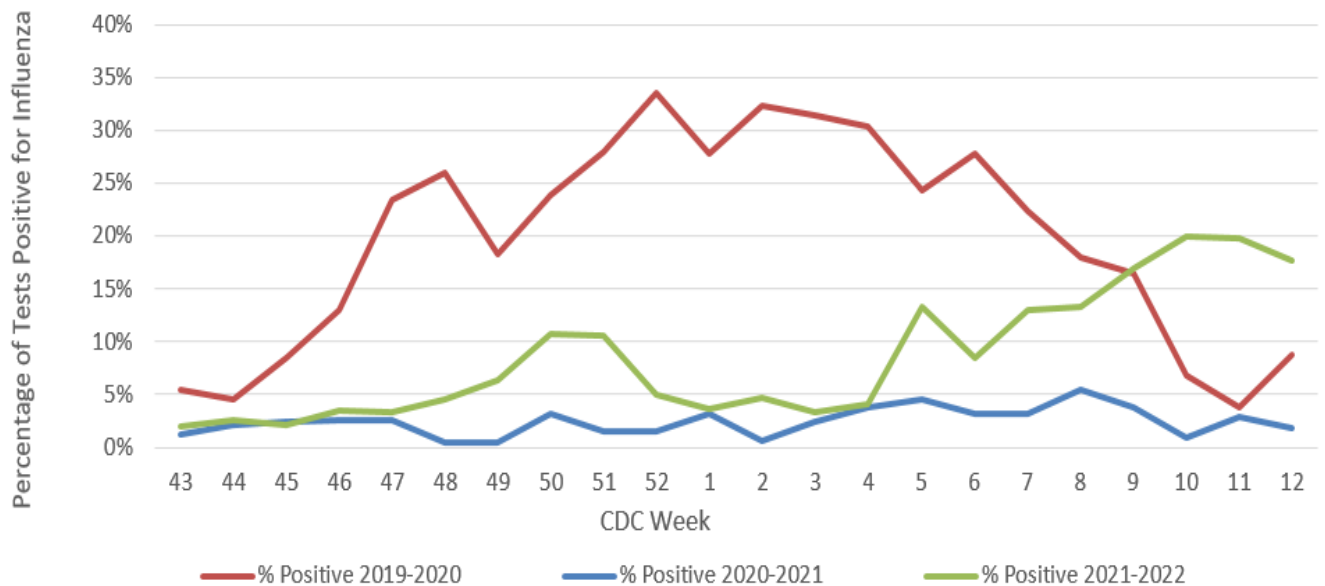
Week Ending	02/19/22	02/26/22	03/05/22	03/12/22	03/19/22	03/26/22	10/24/21 - 03/26/22
<b>CDC Week</b>	<b>7</b>	<b>8</b>	<b>9</b>	<b>10</b>	<b>11</b>	<b>12</b>	
<b>Influenza Tests Performed Weekly</b>	216	272	249	332	363	356	7450
<b>Total Positive Influenza Tests</b>	28	36	42	66	72	63	637
<b>Percent Positive Influenza Tests*</b>	13.0%	13.2%	16.9%	19.8%	19.8%	17.7%	
<b>Positive A Influenza</b>	22	35	41	66	69	61	555
<b>Positive B Influenza</b>	6	1	1	0	3	2	82
<b>Non-differentiated Influenza</b>	0	0	0	0	0	0	0
<b>Influenza Hospitalizations</b>	1	3	5	3	7	5	63
<b>Influenza-associated Pediatric Deaths</b>	0	0	0	0	0	0	0
<b>Influenza-associated Adult Deaths</b>	0	0	0	0	0	0	0

\* Percent positive tests only includes positive tests from providers reporting number of tests performed weekly

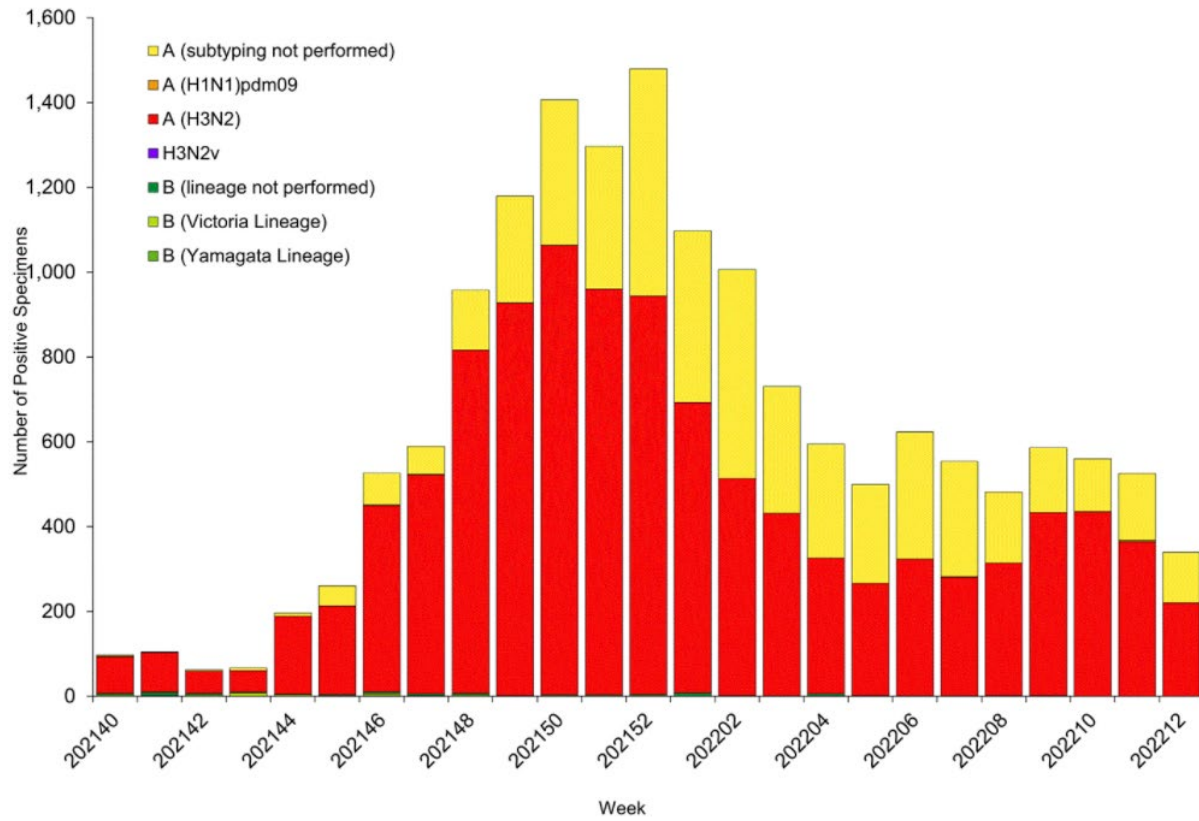
**Figure 2. Influenza Positive Tests and Percent Positive, Denton County Hospitals and Providers, 2021-2022 Season**



**Figure 3. Seasonal Comparison of Influenza Percent Positive, Denton County, 2019 – 2022**

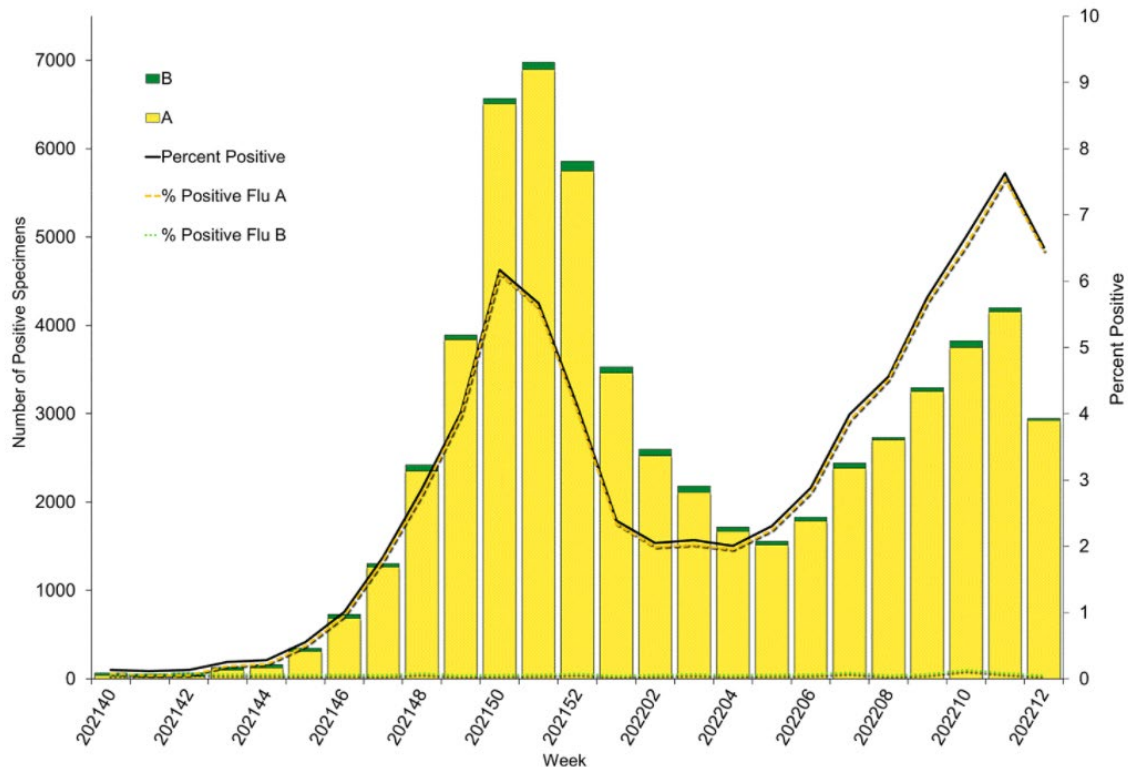


**Figure 4. Influenza Positive Tests Reported to CDC by U.S. Public Health Laboratories, National Summary, October 3, 2021- March 26, 2022**



Source: <https://www.cdc.gov/flu/weekly/index.htm>

**Figure 5. Influenza Positive Tests Reported to CDC by U.S. Clinical Laboratories, National Summary, October 3, 2021- March 26, 2022**



Source: <https://www.cdc.gov/flu/weekly/index.htm>

## Figure 6. 2021-2022 Influenza Vaccine Composition, Northern Hemisphere:

Egg-based vaccine composition recommendations:

- an A/Victoria/2570/2019 (H1N1) pdm09-like virus;
- an A/Cambodia/e0826360/2020 (H3N2)-like virus;
- a B/Washington/02/2019- like virus (B/Victoria lineage);
- a B/Phuket/3073/2013-like virus (B/Yamagata lineage).

Cell- or recombinant-based vaccine composition recommendations:

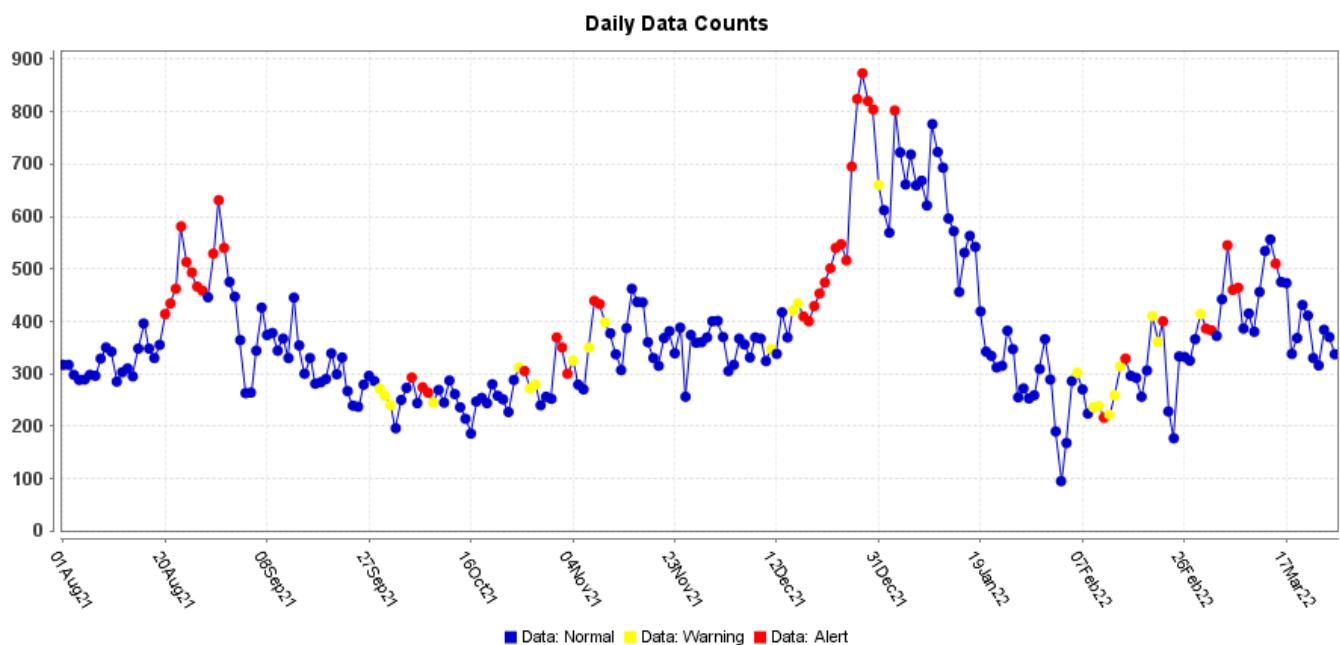
- an A/Wisconsin/588/2019 (H1N1) pdm09-like virus;
- an A/Cambodia/e0826360/2020 (H3N2)-like virus;
- a B/Washington/02/2019- like virus (B/Victoria lineage);
- a B/Phuket/3073/2013-like virus (B/Yamagata lineage).

## Figure 7. U.S. Virologic Surveillance, Week 12

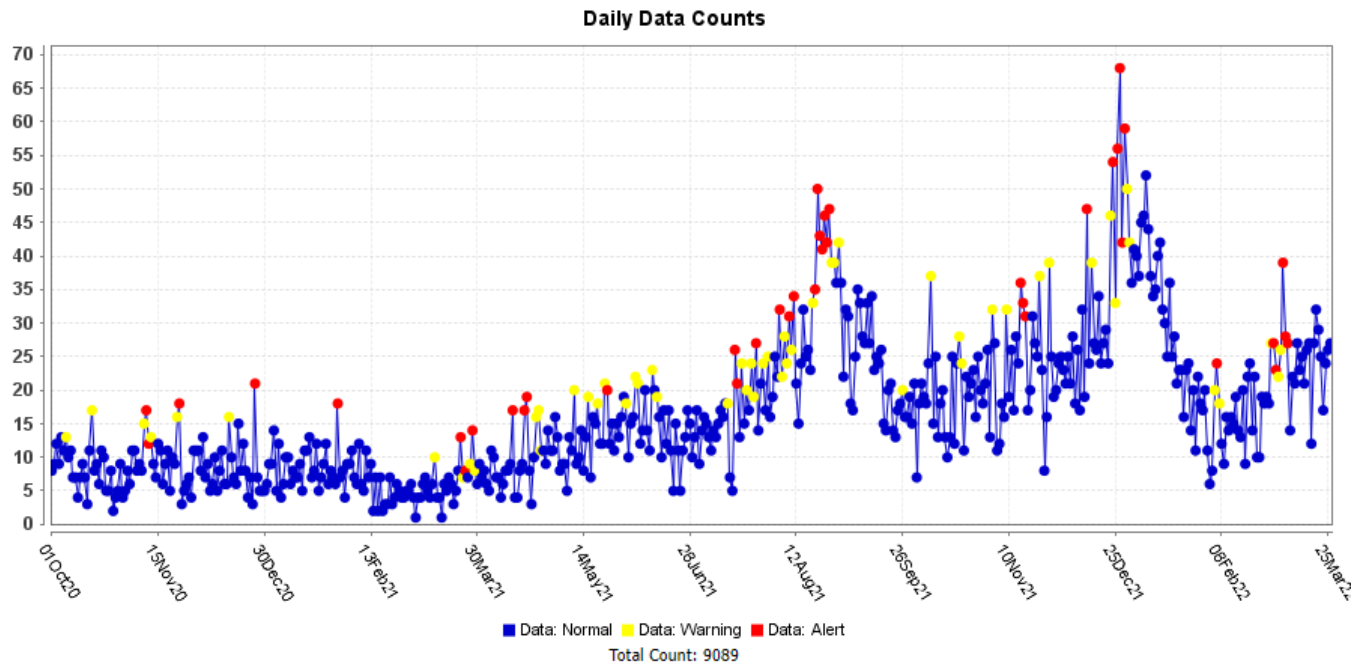
	Week 12	Data Cumulative since October 3, 2021 (Week 40)
No. of specimens tested	45,280	1,940,357
No. of positive specimens (%)	2,947 (6.5%)	61,409 (3.2%)
<i>Positive specimens by type</i>		
Influenza A	2,924 (99.2%)	60,149 (97.9%)
Influenza B	23 (0.8%)	1,260 (2.1%)

Source: <https://www.cdc.gov/flu/weekly/index.htm>

## Figure 8. ESSENCE Syndromic Surveillance for Influenza-like Illness: Denton County, August 01, 2021- March 26, 2022

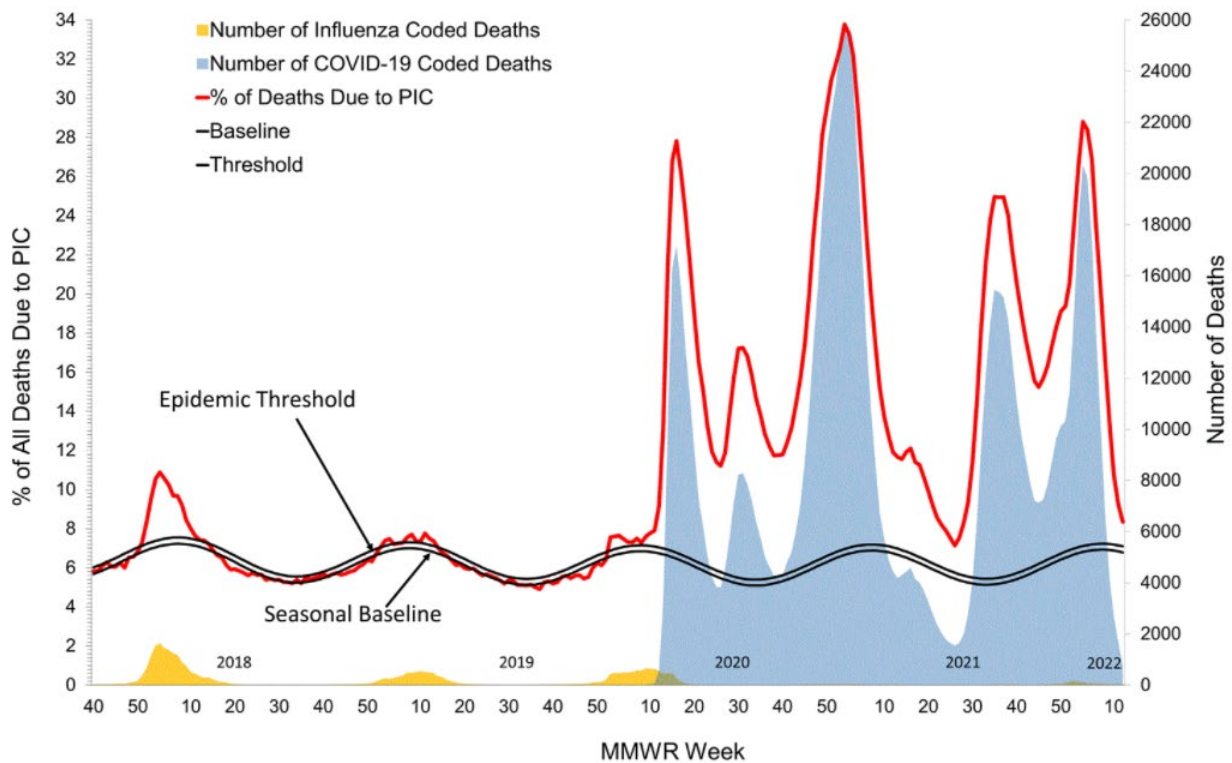


**Figure 9. ESSENCE Syndromic Surveillance for Influenza-like Illness: Denton County, October 01, 2020 – March 26, 2022**



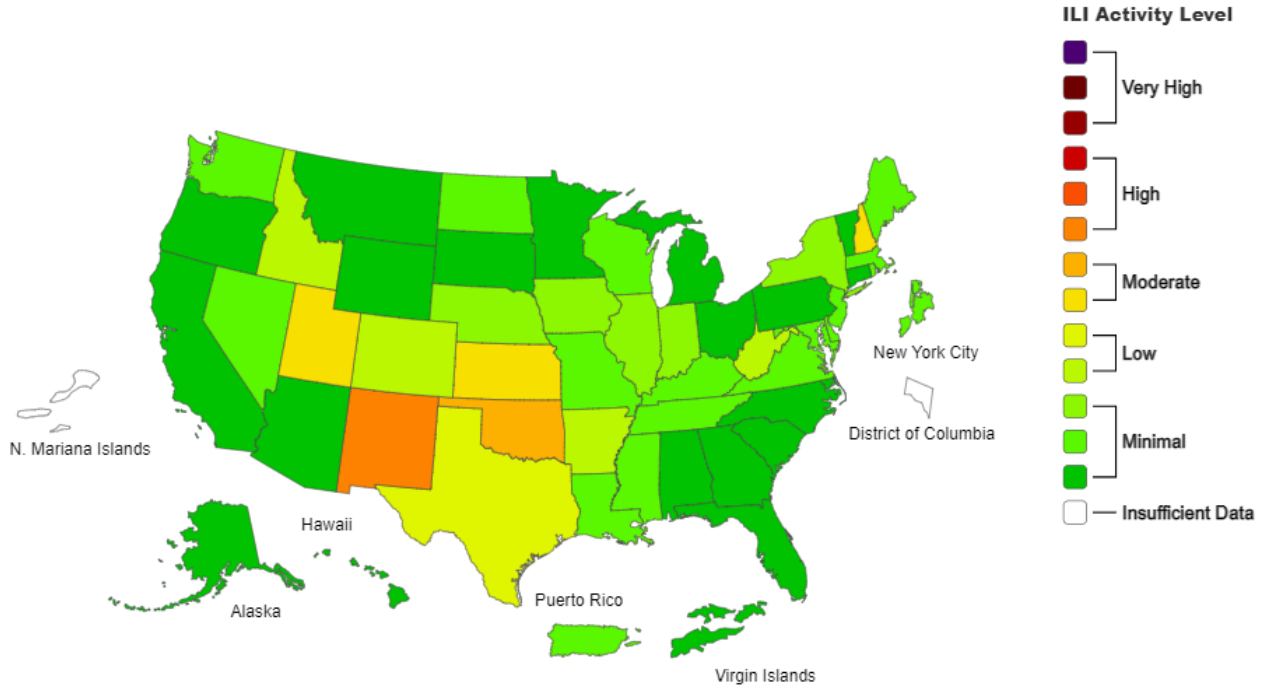
Data obtained from hospitals participating in the Electronic Surveillance System for the Early Notification of Community-based Epidemics (ESSENCE) from October 2020 through the present. Depicted are the numbers of persons presenting to Emergency Departments according to patient location (Denton region) with self-reported chief complaints of influenza-like illness.

**Figure 10. Pneumonia and Influenza Mortality from the National Center for Health Statistics Mortality Surveillance System: Data as of March 31, 2022**



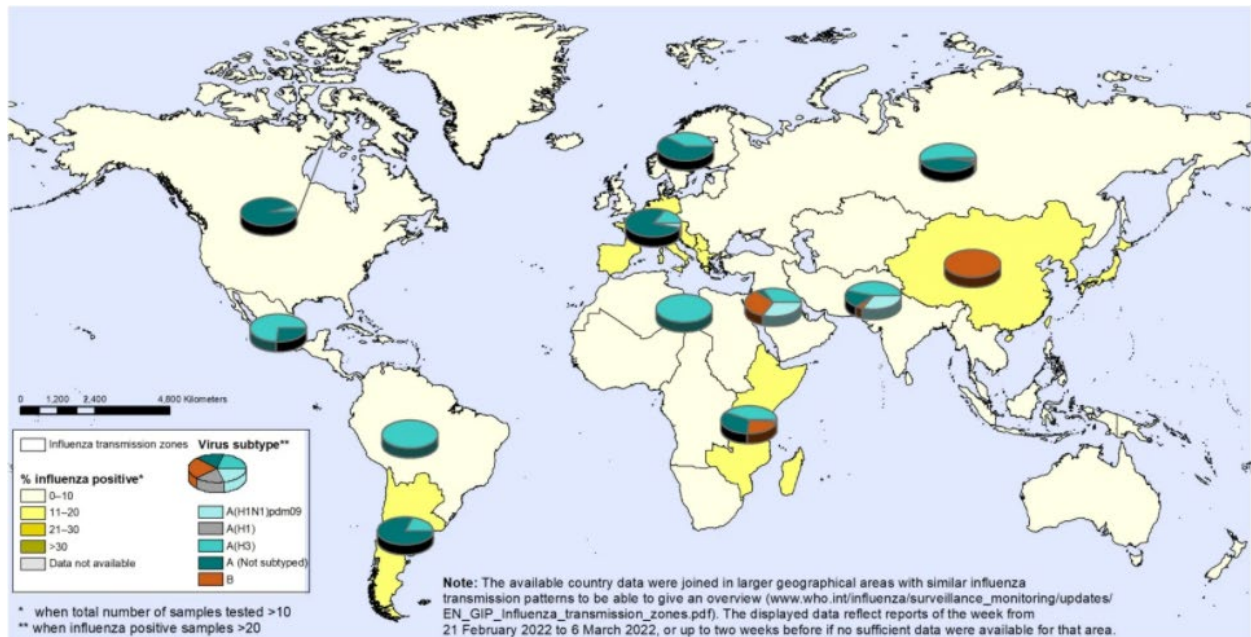
Source: <https://www.cdc.gov/flu/weekly/index.htm>

**Figure 11. 2021-22 Influenza Season Week 12 ending March 26, 2022**



Source: <https://www.cdc.gov/flu/weekly/index.htm>

**Figure 12. Percentage of Respiratory Specimens that tested Positive for Influenza: WHO, Status as of March 21, 2022**



The boundaries and names shown and the designations used on this map do not imply the expression of any opinion whatsoever on the part of the World Health Organization concerning the legal status of any country, territory, city or area or of its authorities, or concerning the delimitation of its frontiers or boundaries. Dotted and dashed lines on maps represent approximate border lines for which there may not yet be full agreement.

Data Source:  
Global Influenza Surveillance and Response System (GISRS),  
FluNet (www.who.int/flu-net)



Please direct inquiries to Denton County Public Health at [epidemiology@dentoncounty.com](mailto:epidemiology@dentoncounty.com) or 940-349-2909