

# Denton County Public Health

## 2021 – 2022 Influenza Surveillance Program

### CDC Week 11, Week Ending March 19, 2022



## Epidemiologic Overview

### Denton County

- Moderate influenza activity was reported in Denton County for week 11.
- 72 positive influenza tests (69 Flu A and 3 Flu B) and 7 hospitalizations were reported by Denton County sentinel providers for week 11.
- Syndromic surveillance for influenza-like illness (ILI) in Denton County increased for week 11 when compared to the previous week.
- 0 influenza-associated deaths have been reported in Denton County for the 2021-2022 season.

### Texas

- Intensity of influenza-like illness in the state of Texas was moderate for week 11.
- The percentage of visits for ILI as reported by ILINet providers decreased to 3.23% in week 11 compared to the previous week.
- The percentage of specimens testing positive for influenza by hospital laboratories in Texas was 20.95% for week 11.

### US

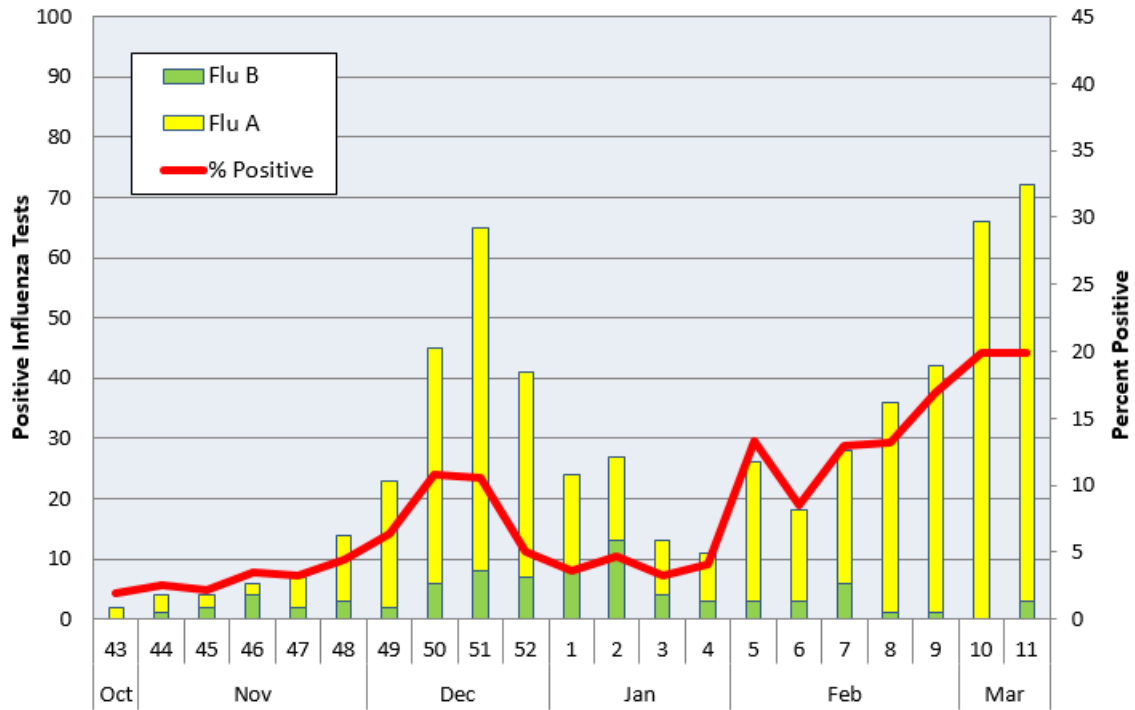
- Influenza activity is increasing in most of the country. The highest levels of influenza percent positivity from clinical labs were seen in states in the central and south-central regions of the country.
- The majority of influenza viruses detected are A(H3N2).
- The proportion of outpatient visits for influenza-like illness (ILI) was 1.8%, which is below the national baseline of 2.5%.
- The percentage of specimens testing positive in clinical labs for influenza in the US was 7.7% for Week 11.
- The proportion of deaths attributed to pneumonia, influenza, or COVID-19 (PIC) from the National Center for Health Statistics Mortality Surveillance System for week 11 was 9.1%. This percentage is **above** the epidemic threshold of 7.1% for week 11.

**Figure 1. Influenza Surveillance Summary: Denton County Hospitals and Providers**

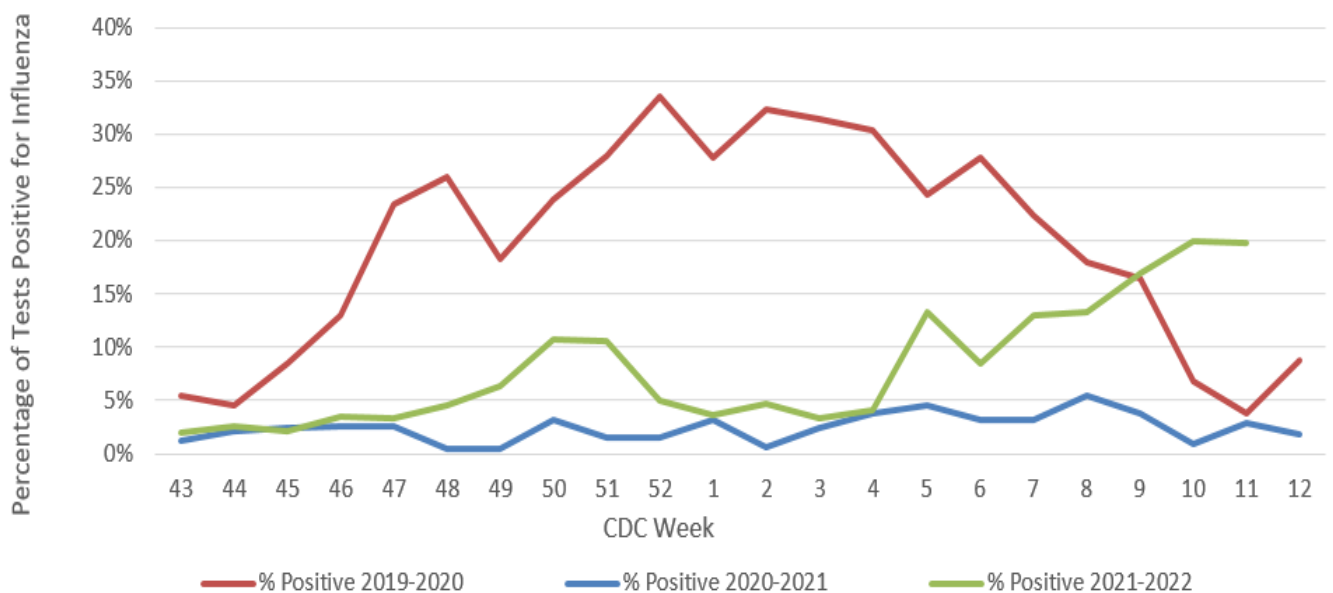
Week Ending	02/12/22	02/19/22	02/26/22	03/05/22	03/12/22	03/19/22	10/24/21 - 03/19/22
<b>CDC Week</b>	<b>6</b>	<b>7</b>	<b>8</b>	<b>9</b>	<b>10</b>	<b>11</b>	
<b>Influenza Tests Performed Weekly</b>	212	216	272	249	332	363	7094
<b>Total Positive Influenza Tests</b>	18	28	36	42	66	72	574
<b>Percent Positive Influenza Tests*</b>	8.5%	13.0%	13.2%	16.9%	19.8%	19.8%	
<b>Positive A Influenza</b>	15	22	35	41	66	69	494
<b>Positive B Influenza</b>	3	6	1	1	0	3	80
<b>Non-differentiated Influenza</b>	0	0	0	0	0	0	0
<b>Influenza Hospitalizations</b>	4	1	3	5	3	7	58
<b>Influenza-associated Pediatric Deaths</b>	0	0	0	0	0	0	0
<b>Influenza-associated Adult Deaths</b>	0	0	0	0	0	0	0

\* Percent positive tests only includes positive tests from providers reporting number of tests performed weekly

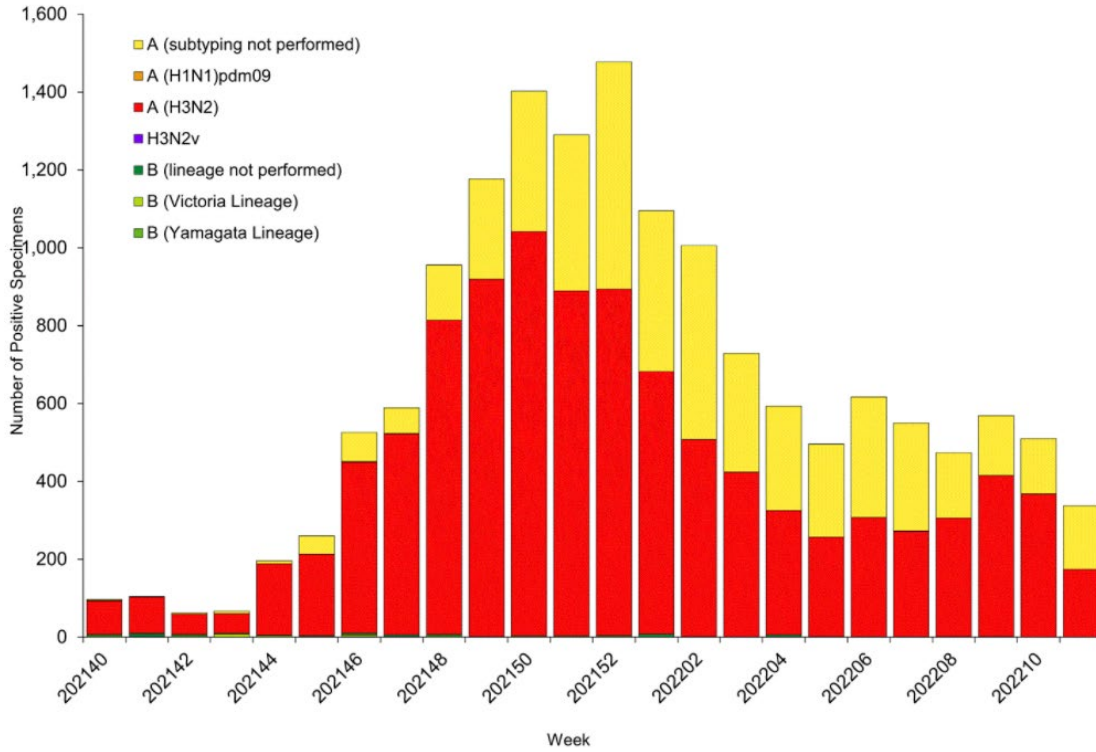
**Figure 2. Influenza Positive Tests and Percent Positive, Denton County Hospitals and Providers, 2021-2022 Season**



**Figure 3. Seasonal Comparison of Influenza Percent Positive, Denton County, 2019 – 2022**

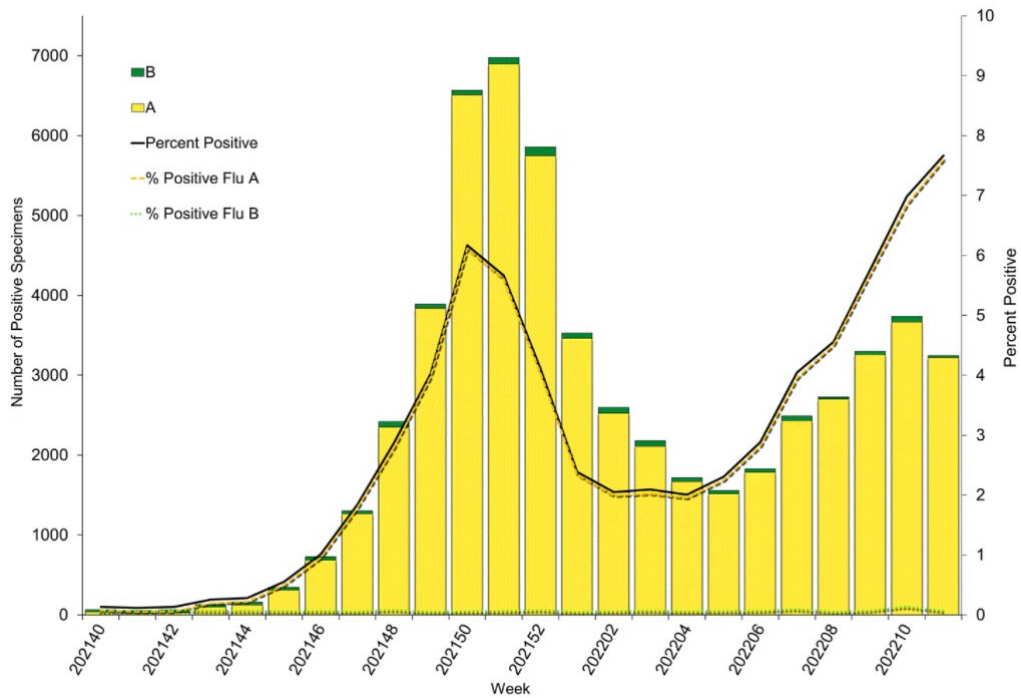


**Figure 4. Influenza Positive Tests Reported to CDC by U.S. Public Health Laboratories, National Summary, October 3, 2021- March 19, 2022**



Source: <https://www.cdc.gov/flu/weekly/index.htm>

**Figure 5. Influenza Positive Tests Reported to CDC by U.S. Clinical Laboratories, National Summary, October 3, 2021- March 19, 2022**



Source: <https://www.cdc.gov/flu/weekly/index.htm>

**Figure 6. 2021-2022 Influenza Vaccine Composition, Northern Hemisphere:**

Egg-based vaccine composition recommendations:

- an A/Victoria/2570/2019 (H1N1) pdm09-like virus;
- an A/Cambodia/e0826360/2020 (H3N2)-like virus;
- a B/Washington/02/2019- like virus (B/Victoria lineage);
- a B/Phuket/3073/2013-like virus (B/Yamagata lineage).

Cell- or recombinant-based vaccine composition recommendations:

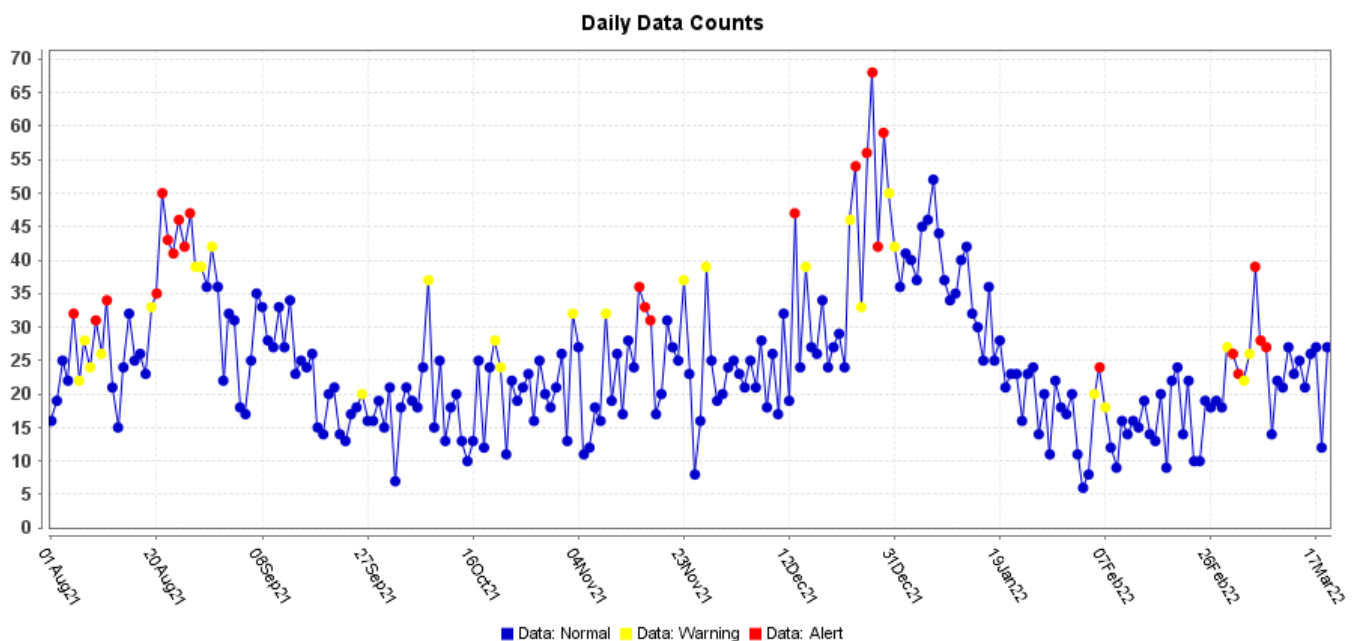
- an A/Wisconsin/588/2019 (H1N1) pdm09-like virus;
- an A/Cambodia/e0826360/2020 (H3N2)-like virus;
- a B/Washington/02/2019- like virus (B/Victoria lineage);
- a B/Phuket/3073/2013-like virus (B/Yamagata lineage).

**Figure 7. U.S. Virologic Surveillance, Week 11**

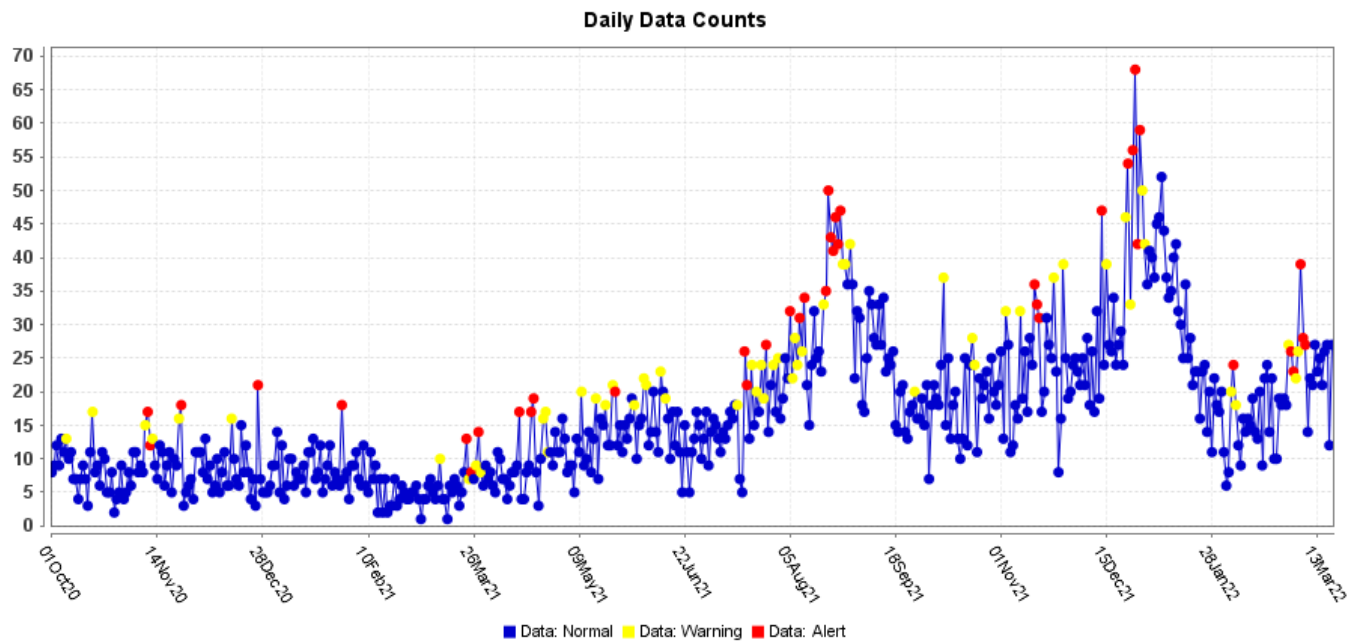
	Week 11	Data Cumulative since October 3, 2021 (Week 40)
No. of specimens tested	42,370	1,879,003
No. of positive specimens (%)	3,248 (7.7%)	57,475 (3.1%)
<i>Positive specimens by type</i>		
Influenza A	3,220 (99.1%)	56,257 (97.9%)
Influenza B	28 (0.9%)	1,218 (2.1%)

Source: <https://www.cdc.gov/flu/weekly/index.htm>

**Figure 8. ESSENCE Syndromic Surveillance for Influenza-like Illness: Denton County, August 01, 2021- March 19, 2022**

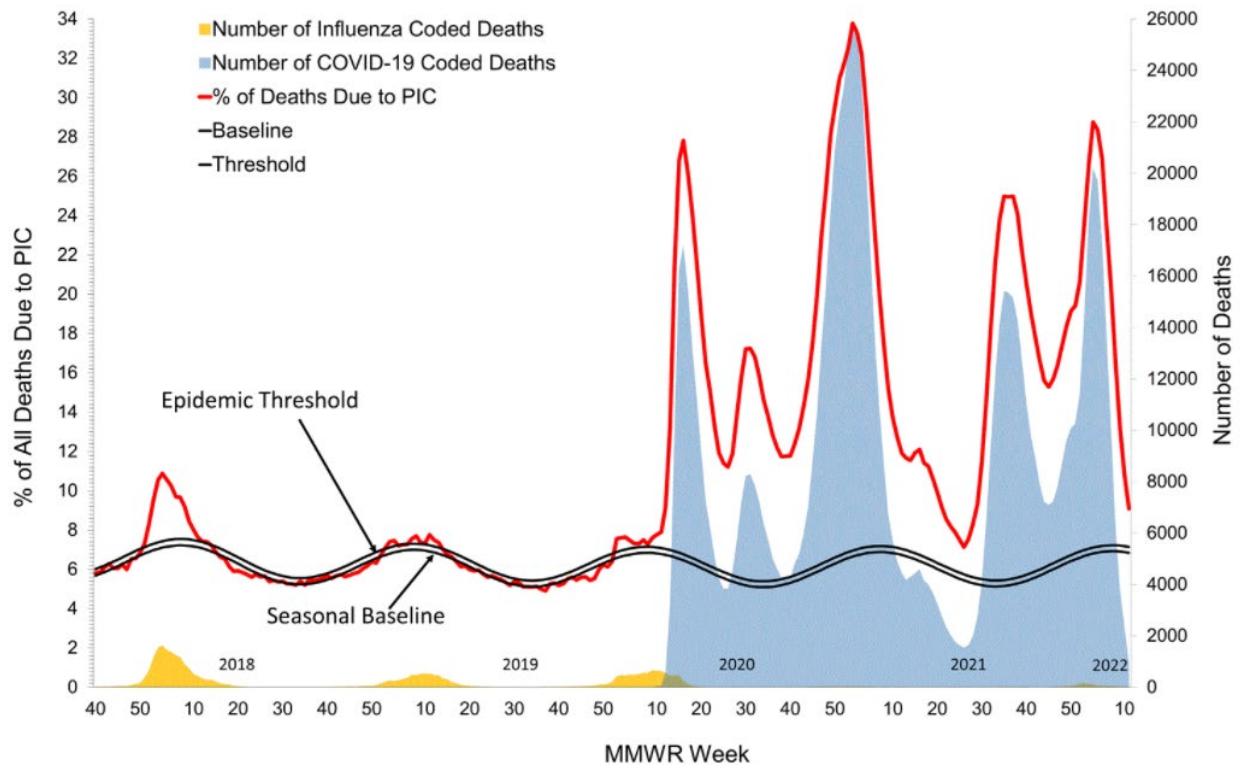


**Figure 9. ESSENCE Syndromic Surveillance for Influenza-like Illness: Denton County, October 01, 2020 – March 19, 2022**



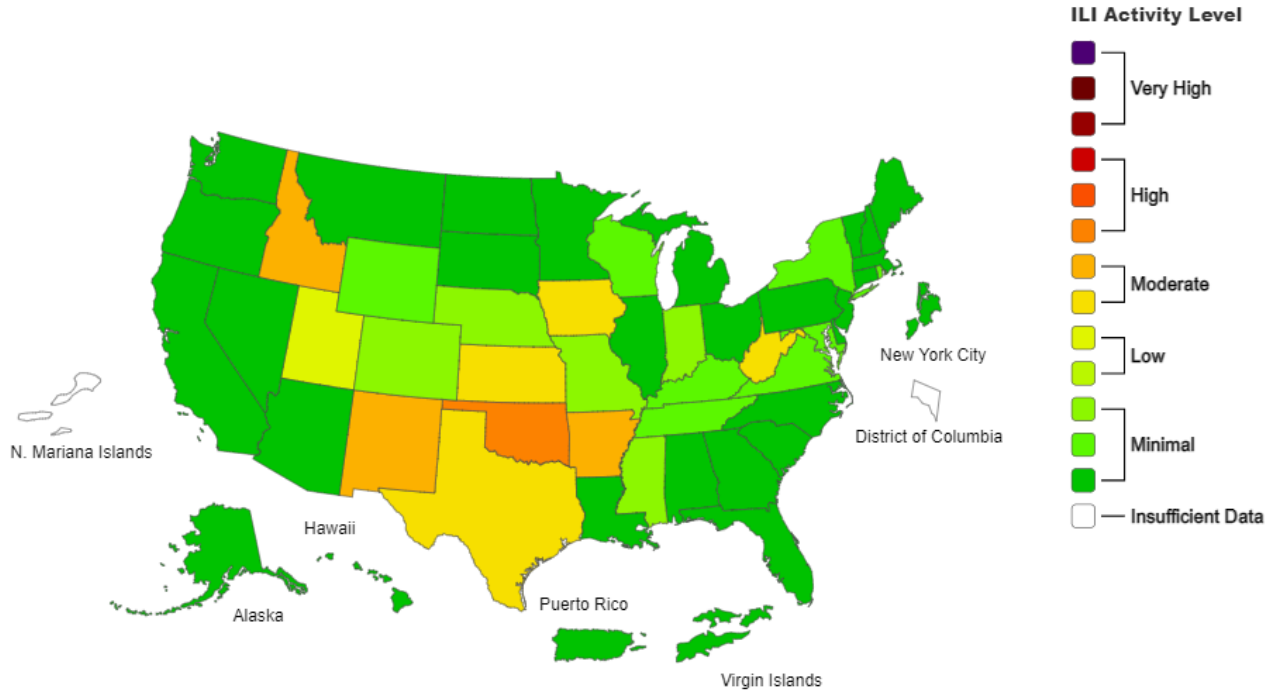
Data obtained from hospitals participating in the Electronic Surveillance System for the Early Notification of Community-based Epidemics (ESSENCE) from October 2020 through the present. Depicted are the numbers of persons presenting to Emergency Departments according to patient location (Denton region) with self-reported chief complaints of influenza-like illness.

**Figure 10. Pneumonia and Influenza Mortality from the National Center for Health Statistics Mortality Surveillance System: Data as of March 24, 2022**



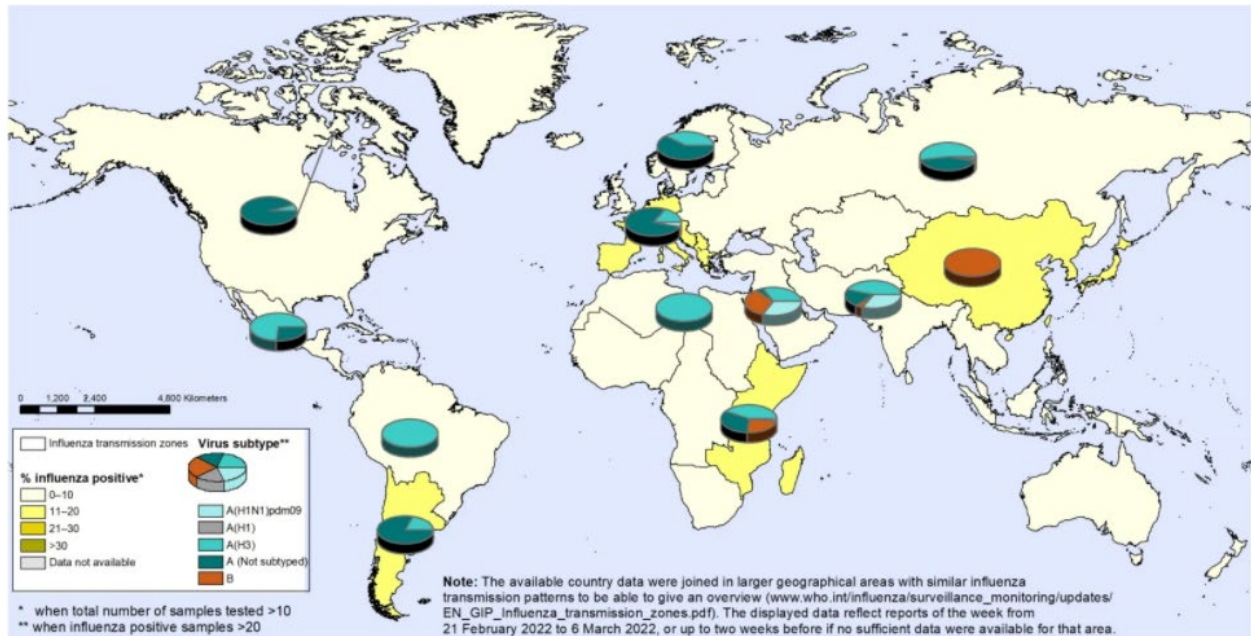
Source: <https://www.cdc.gov/flu/weekly/index.htm>

**Figure 11. 2021-22 Influenza Season Week 11 ending March 19, 2022**



Source: <https://www.cdc.gov/flu/weekly/index.htm>

**Figure 12. Percentage of Respiratory Specimens that tested Positive for Influenza: WHO, Status as of March 21, 2022**



The boundaries and names shown and the designations used on this map do not imply the expression of any opinion whatsoever on the part of the World Health Organization concerning the legal status of any country, territory, city or area or of its authorities, or concerning the delimitation of its frontiers or boundaries. Dotted and dashed lines on maps represent approximate border lines for which there may not yet be full agreement.

Data Source:  
Global Influenza Surveillance and Response System (GISRS),  
FluNet ([www.who.int/flu-net](http://www.who.int/flu-net))



Please direct inquiries to Denton County Public Health at  
[epidemiology@dentoncounty.com](mailto:epidemiology@dentoncounty.com) or 940-349-2909