

# Denton County Public Health

## 2021 – 2022 Influenza Surveillance Program

### CDC Week 10, Week Ending March 12, 2022



## Epidemiologic Overview

### Denton County

- Moderate influenza activity was reported in Denton County for week 10.
- 66 positive influenza tests (66 Flu A and 0 Flu B) and 3 hospitalizations were reported by Denton County sentinel providers for week 10.
- Syndromic surveillance for influenza-like illness (ILI) in Denton County increased for week 10 when compared to the previous week.
- 0 influenza-associated deaths have been reported in Denton County for the 2021-2022 season.

### Texas

- Intensity of influenza-like illness in the state of Texas was low for week 10.
- The percentage of visits for ILI as reported by ILINet providers increased to 3.19% in week 10 compared to the previous week.
- The percentage of specimens testing positive for influenza by hospital laboratories in Texas was 18.45% for week 10.

### US

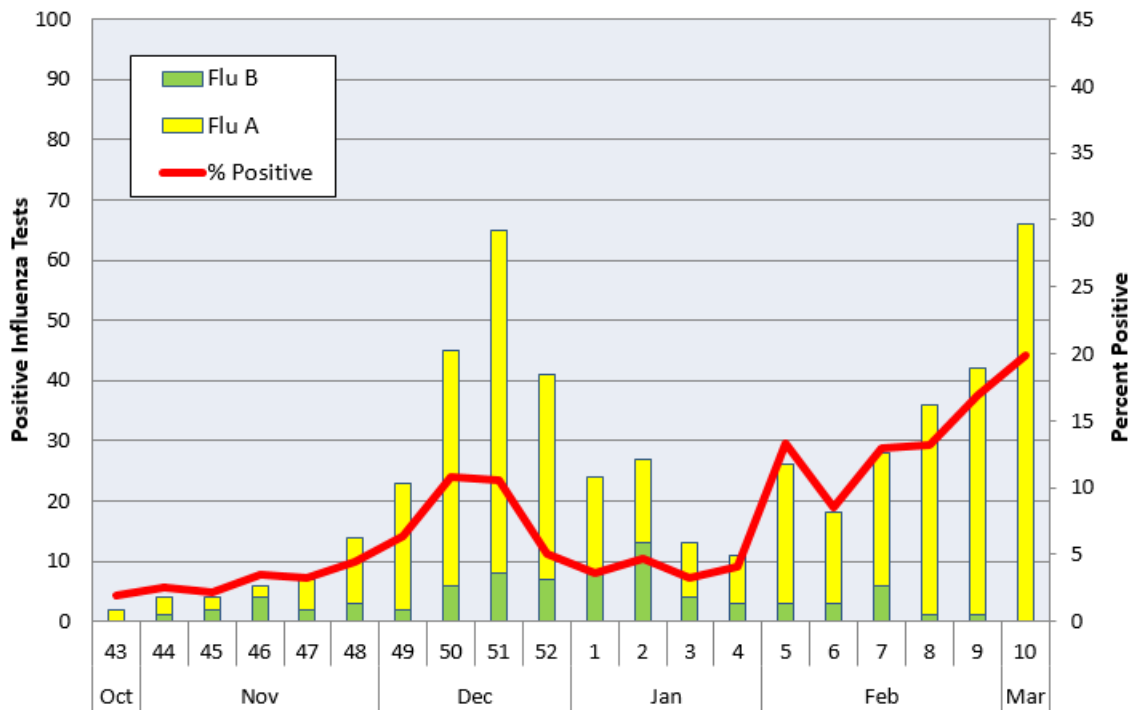
- Influenza activity is increasing in most of the country. The highest levels of influenza percent positivity from clinical labs were seen in states in the central and south-central regions of the country.
- The majority of influenza viruses detected are A(H3N2).
- The proportion of outpatient visits for influenza-like illness (ILI) was 1.7%, which is below the national baseline of 2.5%.
- The percentage of specimens testing positive in clinical labs for influenza in the US was 6.8% for Week 10.
- The proportion of deaths attributed to pneumonia, influenza, or COVID-19 (PIC) from the National Center for Health Statistics Mortality Surveillance System for week 10 was 10.8%. This percentage is **above** the epidemic threshold of 7.2% for week 10.

**Figure 1. Influenza Surveillance Summary: Denton County Hospitals and Providers**

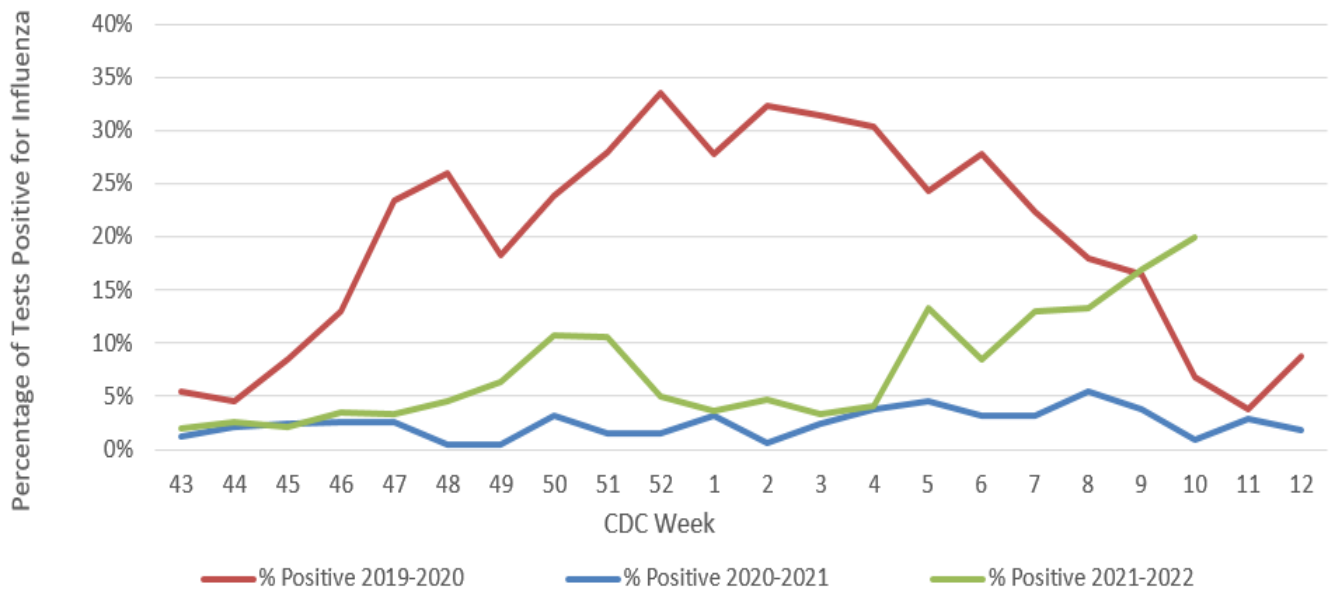
Week Ending	02/05/22	02/12/22	02/19/22	02/26/22	03/05/22	03/12/22	10/24/21 - 03/12/22
<b>CDC Week</b>	<b>5</b>	<b>6</b>	<b>7</b>	<b>8</b>	<b>9</b>	<b>10</b>	
<b>Influenza Tests Performed Weekly</b>	195	212	216	272	249	332	6399
<b>Total Positive Influenza Tests</b>	26	18	28	36	42	66	502
<b>Percent Positive Influenza Tests*</b>	13.3%	8.5%	13.0%	13.2%	16.9%	19.8%	
<b>Positive A Influenza</b>	23	15	22	35	41	66	425
<b>Positive B Influenza</b>	3	3	6	1	1	0	77
<b>Non-differentiated Influenza</b>	0	0	0	0	0	0	0
<b>Influenza Hospitalizations</b>	8	4	1	3	5	3	51
<b>Influenza-associated Pediatric Deaths</b>	0	0	0	0	0	0	0
<b>Influenza-associated Adult Deaths</b>	0	0	0	0	0	0	0

\* Percent positive tests only includes positive tests from providers reporting number of tests performed weekly

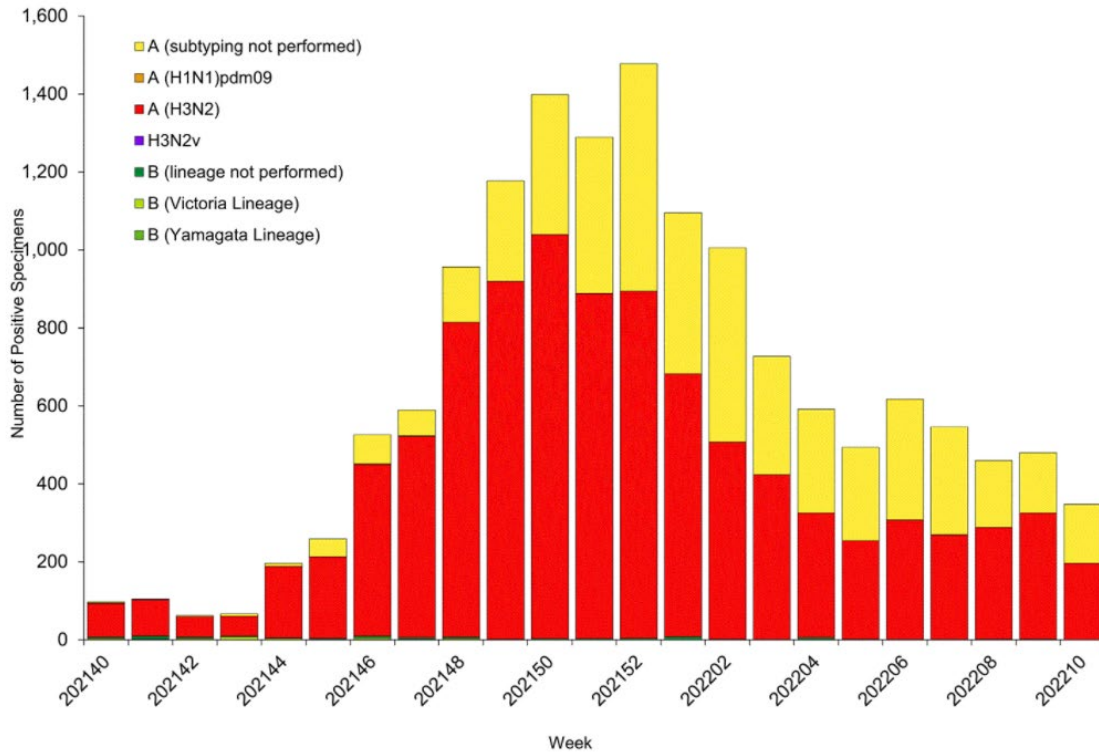
**Figure 2. Influenza Positive Tests and Percent Positive, Denton County Hospitals and Providers, 2021-2022 Season**



**Figure 3. Seasonal Comparison of Influenza Percent Positive, Denton County, 2019 – 2022**

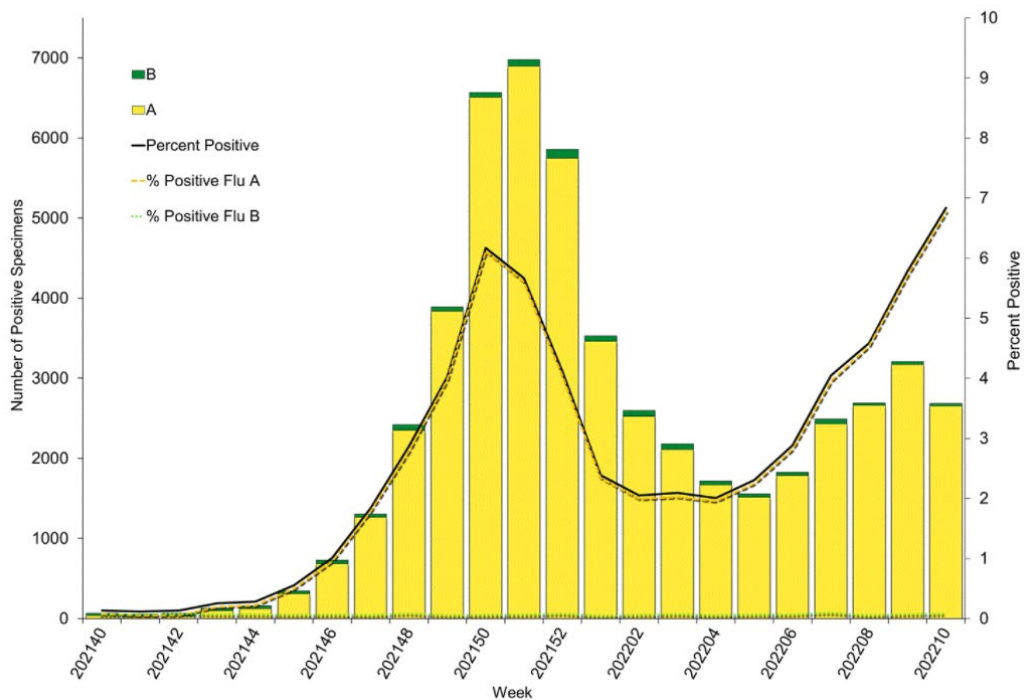


**Figure 4. Influenza Positive Tests Reported to CDC by U.S. Public Health Laboratories, National Summary, October 3, 2021- March 12, 2022**



Source: <https://www.cdc.gov/flu/weekly/index.htm>

**Figure 5. Influenza Positive Tests Reported to CDC by U.S. Clinical Laboratories, National Summary, October 3, 2021- March 12, 2022**



Source: <https://www.cdc.gov/flu/weekly/index.htm>

**Figure 6. 2021-2022 Influenza Vaccine Composition, Northern Hemisphere:**

Egg-based vaccine composition recommendations:

- an A/Victoria/2570/2019 (H1N1) pdm09-like virus;
- an A/Cambodia/e0826360/2020 (H3N2)-like virus;
- a B/Washington/02/2019- like virus (B/Victoria lineage);
- a B/Phuket/3073/2013-like virus (B/Yamagata lineage).

Cell- or recombinant-based vaccine composition recommendations:

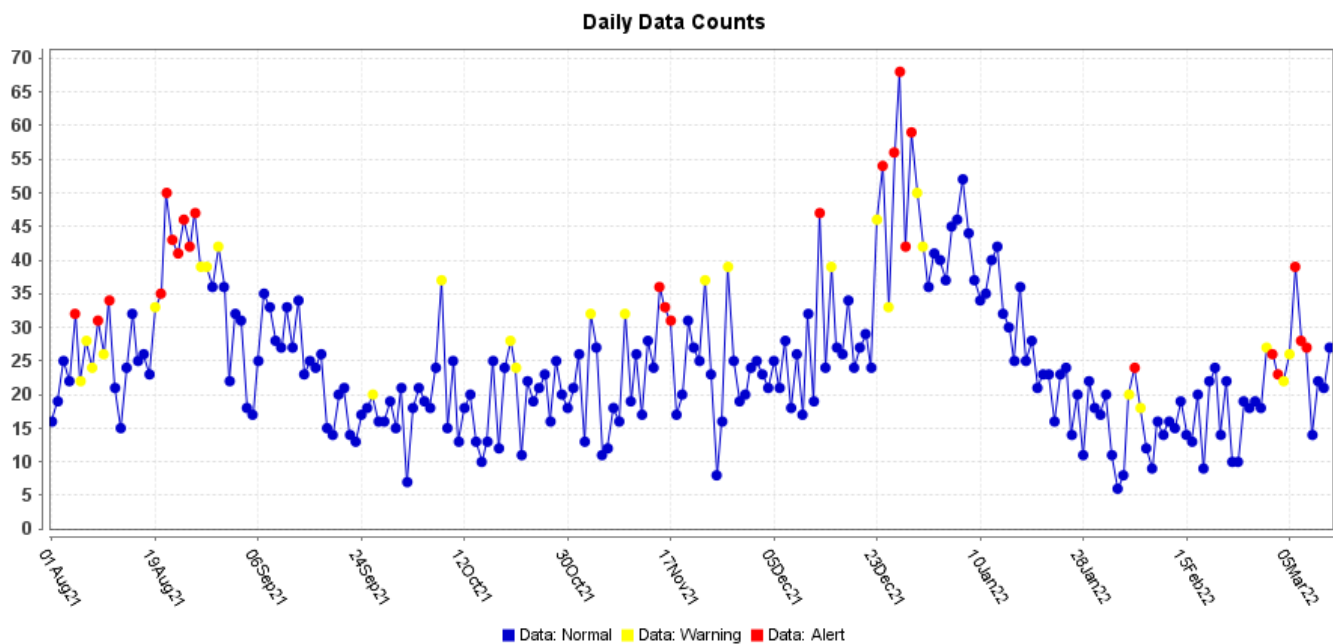
- an A/Wisconsin/588/2019 (H1N1) pdm09-like virus;
- an A/Cambodia/e0826360/2020 (H3N2)-like virus;
- a B/Washington/02/2019- like virus (B/Victoria lineage);
- a B/Phuket/3073/2013-like virus (B/Yamagata lineage).

**Figure 7. U.S. Virologic Surveillance, Week 10**

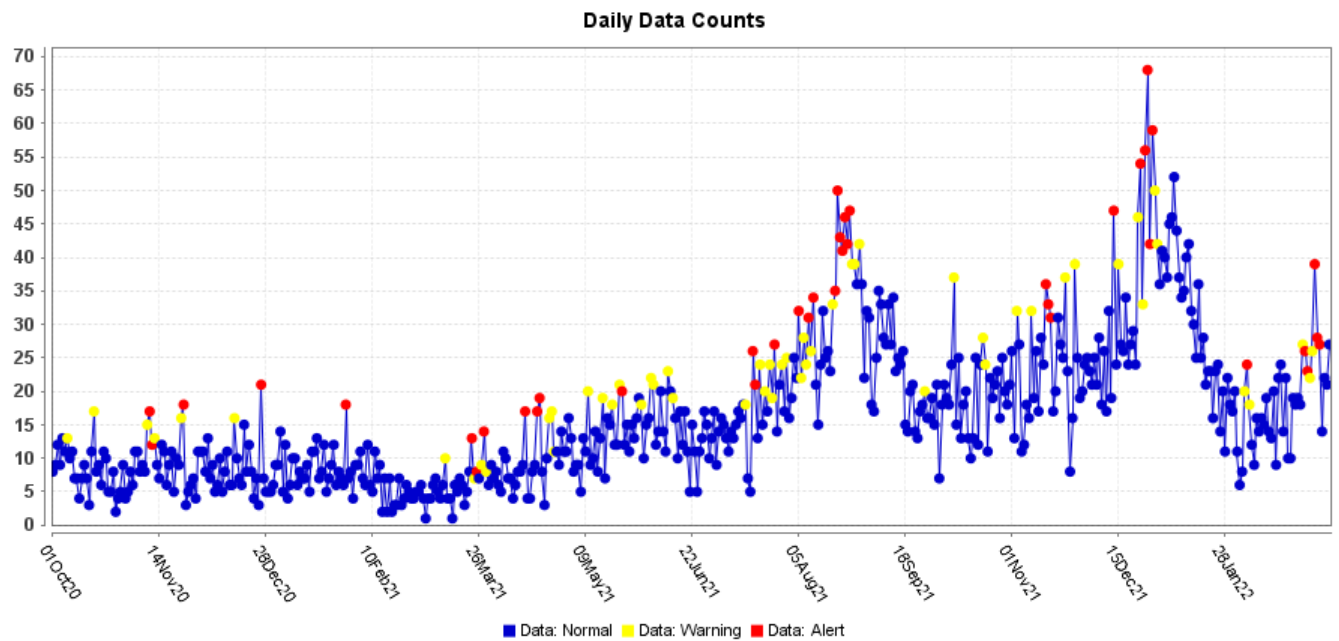
	Week 10	Data Cumulative since October 3, 2021 (Week 40)
No. of specimens tested	39,267	1,819,313
No. of positive specimens (%)	2,685 (6.8%)	53,042 (2.9%)
<i>Positive specimens by type</i>		
Influenza A	2,655 (98.9%)	51,897 (97.8%)
Influenza B	30 (1.1%)	1,145 (2.2%)

Source: <https://www.cdc.gov/flu/weekly/index.htm>

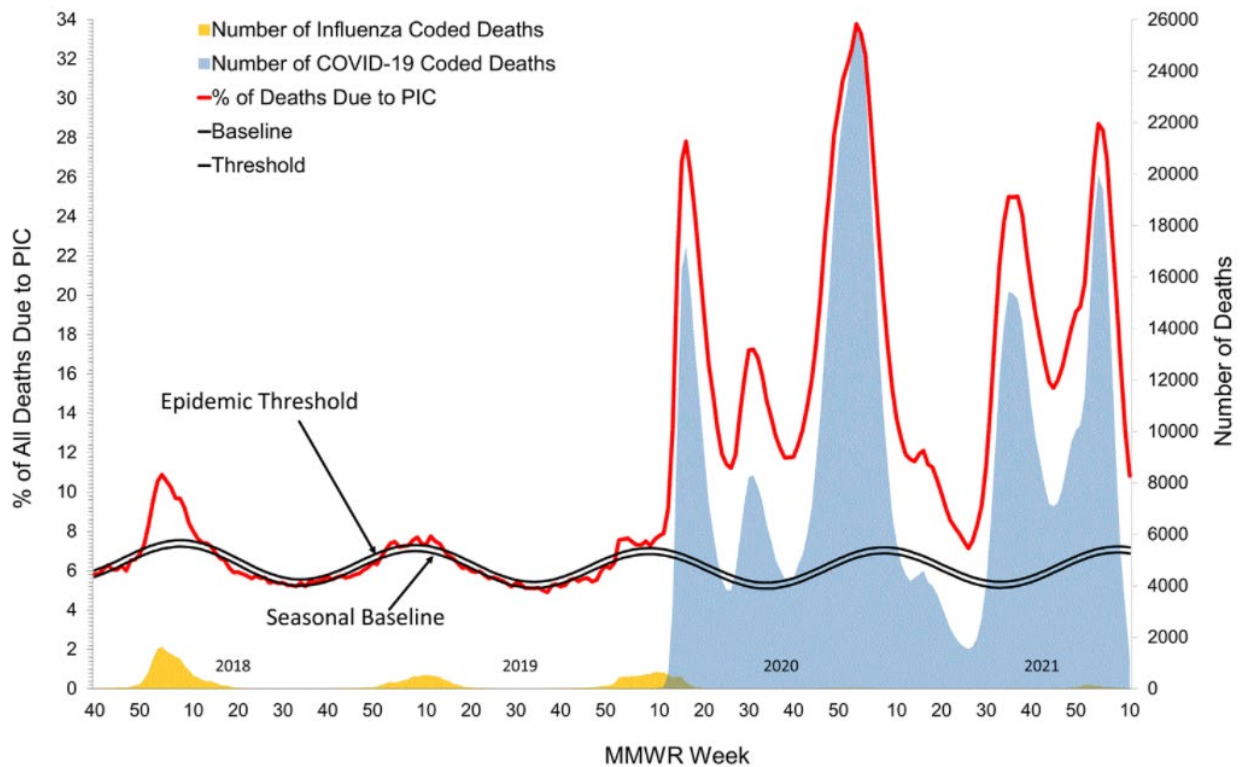
**Figure 8. ESSENCE Syndromic Surveillance for Influenza-like Illness: Denton County, August 01, 2021- March 12, 2022**



**Figure 9. ESSENCE Syndromic Surveillance for Influenza-like Illness: Denton County, October 01, 2020 – March 12, 2022**

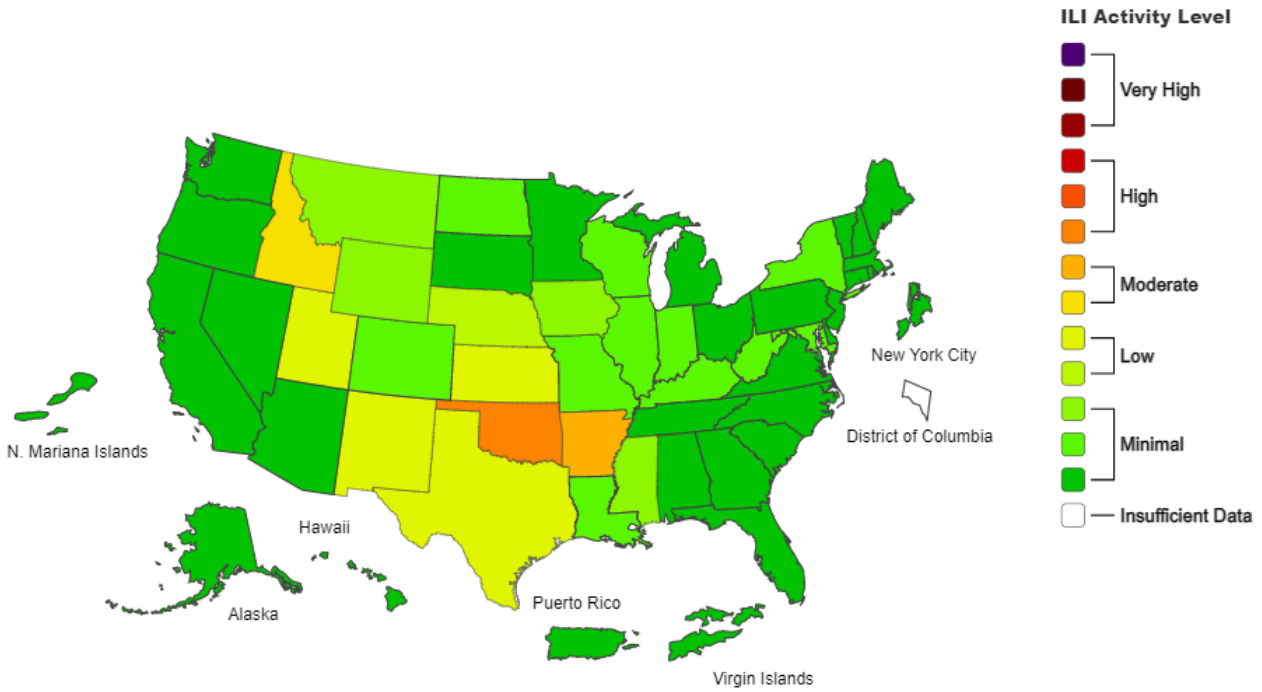


**Figure 10. Pneumonia and Influenza Mortality from the National Center for Health Statistics Mortality Surveillance System: Data as of March 17, 2022**

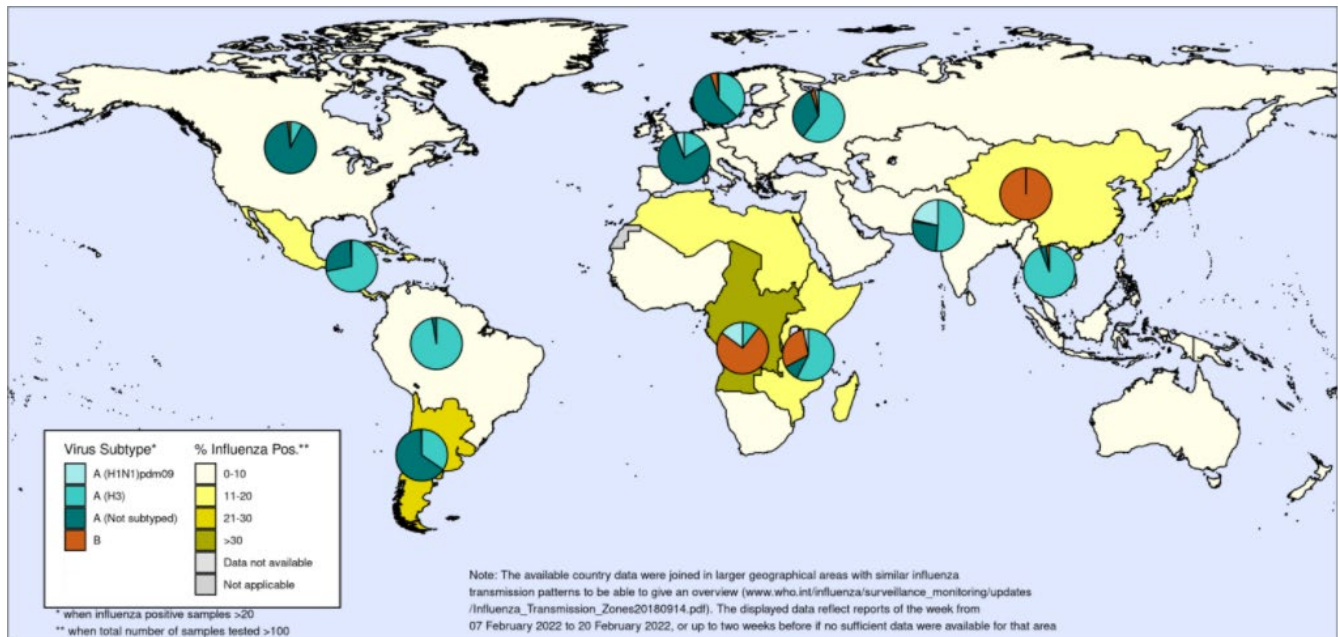




**Figure 11. 2021-22 Influenza Season Week 10 ending March 12, 2022**



**Figure 12. Percentage of Respiratory Specimens that tested Positive for Influenza: WHO, Status as of March 4, 2022**



The boundaries and names shown and the designations used on this map do not imply the expression of any opinion whatsoever on the part of the World Health Organization concerning the legal status of any country, territory, city or area or of its authorities, or concerning the delimitation of its frontiers or boundaries. Dotted and dashed lines on maps represent approximate border lines for which there may not yet be full agreement.

Data source: Global Influenza Surveillance and Response System (GISRS), FluNet (www.who.int/fluNet)  
Copyright WHO 2022. All rights reserved.





Please direct inquiries to Denton County Public Health at  
[epidemiology@dentoncounty.com](mailto:epidemiology@dentoncounty.com) or 940-349-2909