

Denton County Public Health

2021 – 2022 Influenza Surveillance Program

CDC Week 5, Week Ending February 05, 2022



Epidemiologic Overview

Denton County

- Low influenza activity was reported in Denton County for week 5.
- 26 positive influenza tests (23 Flu A and 3 Flu B) and 8 hospitalizations were reported by Denton County sentinel providers for week 5.
- Syndromic surveillance for influenza-like illness (ILI) in Denton County decreased for week 5 when compared to the previous week.
- 0 influenza-associated deaths have been reported in Denton County for the 2021-2022 season.

Texas

- Intensity of influenza-like illness in the state of Texas was minimal for week 5.
- The percentage of visits for ILI as reported by ILINet providers decreased to 2.34% in week 5 compared to the previous week.
- The percentage of specimens testing positive for influenza by hospital laboratories in Texas increased to 5.81% in week 5 compared to the previous week.

US

- Sporadic influenza activity continues across the country.
- The majority of influenza viruses detected are A(H3N2).
- The proportion of outpatient visits for influenza-like illness (ILI) was 1.7%, which is below the national baseline of 2.5%.
- The percentage of specimens testing positive in clinical labs for influenza in the US was 2.0% for Week 5.
- The proportion of deaths attributed to pneumonia, influenza, or COVID-19 (PIC) from the National Center for Health Statistics Mortality Surveillance System for week 5 was 26.3%. This percentage is **above** the epidemic threshold of 7.2% for week 5.

Figure 1. Influenza Surveillance Summary: Denton County Hospitals and Providers

Week Ending	01/01/22	01/08/22	01/15/22	01/22/22	01/29/22	02/05/22	10/24/21 - 02/05/22
CDC Week	52	1	2	3	4	5	
Influenza Tests Performed Weekly	807	661	574	396	269	195	5450
Total Positive Influenza Tests	41	24	27	13	11	26	312
Percent Positive Influenza Tests*	5.0%	3.6%	4.7%	3.3%	4.1%	13.3%	
Positive A Influenza	34	16	14	9	8	23	246
Positive B Influenza	7	8	13	4	3	3	66
Non-differentiated Influenza	0	0	0	0	0	0	0
Influenza Hospitalizations	2	6	3	2	1	8	35
Influenza-associated Pediatric Deaths	0	0	0	0	0	0	0
Influenza-associated Adult Deaths	0	0	0	0	0	0	0

* Percent positive tests only includes positive tests from providers reporting number of tests performed weekly

Figure 2. Influenza Positive Tests and Percent Positive, Denton County Hospitals and Providers, 2021-2022 Season

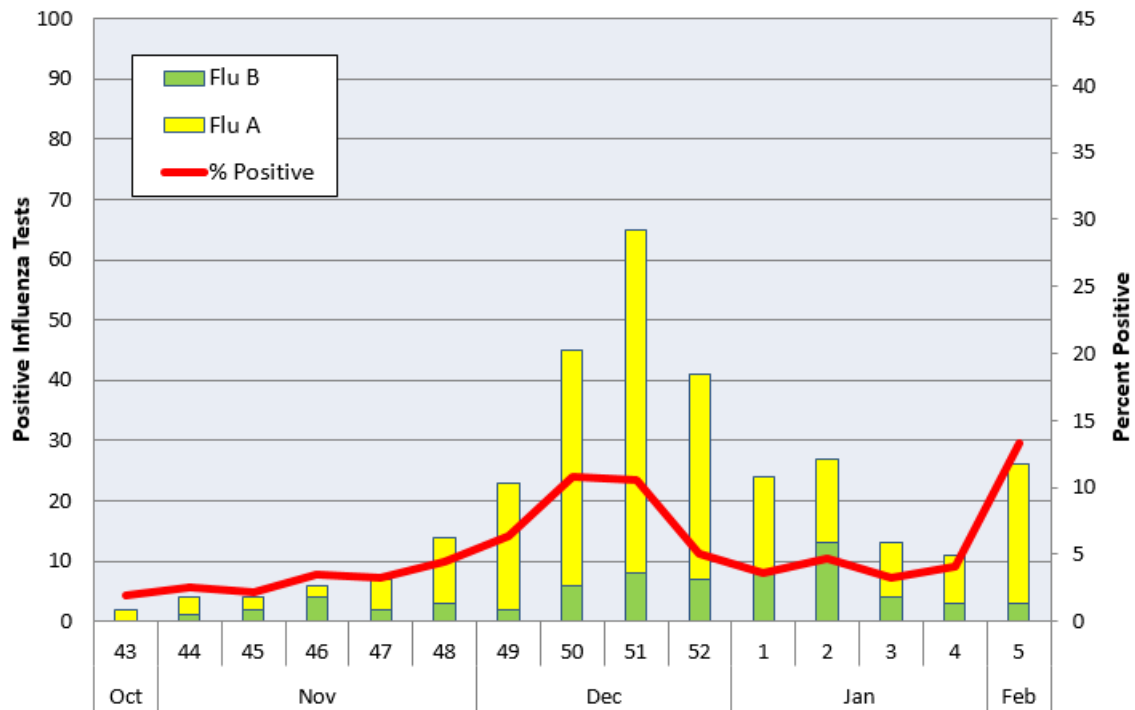


Figure 3. Seasonal Comparison of Influenza Percent Positive, Denton County, 2019 – 2022

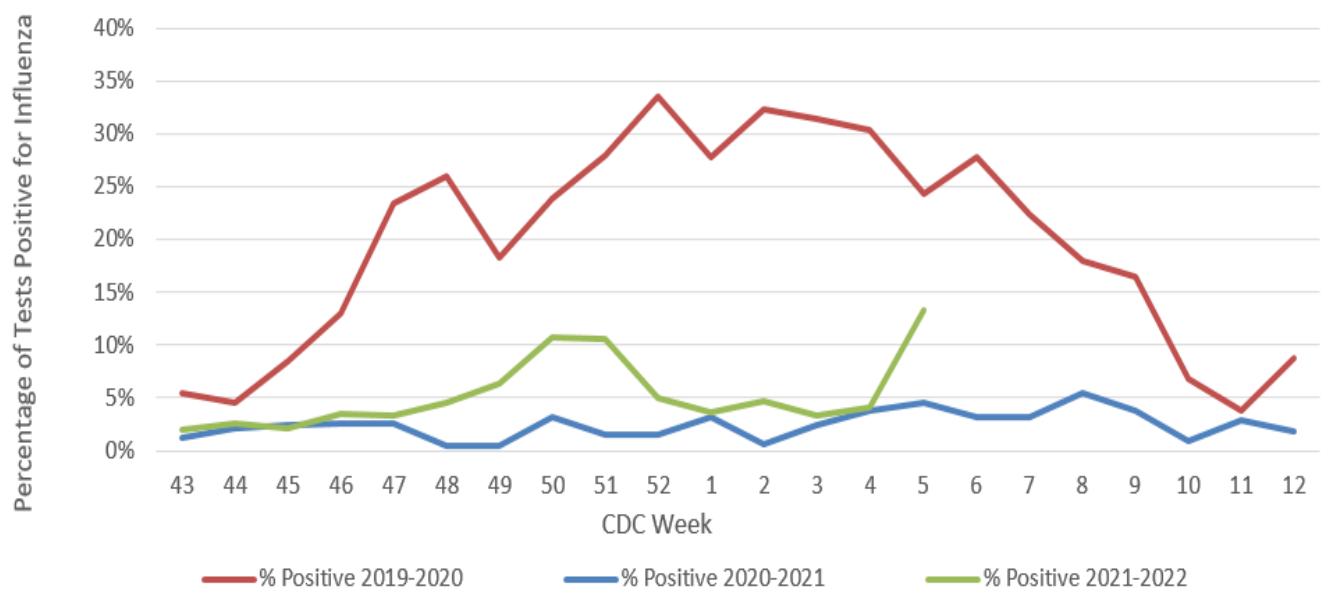
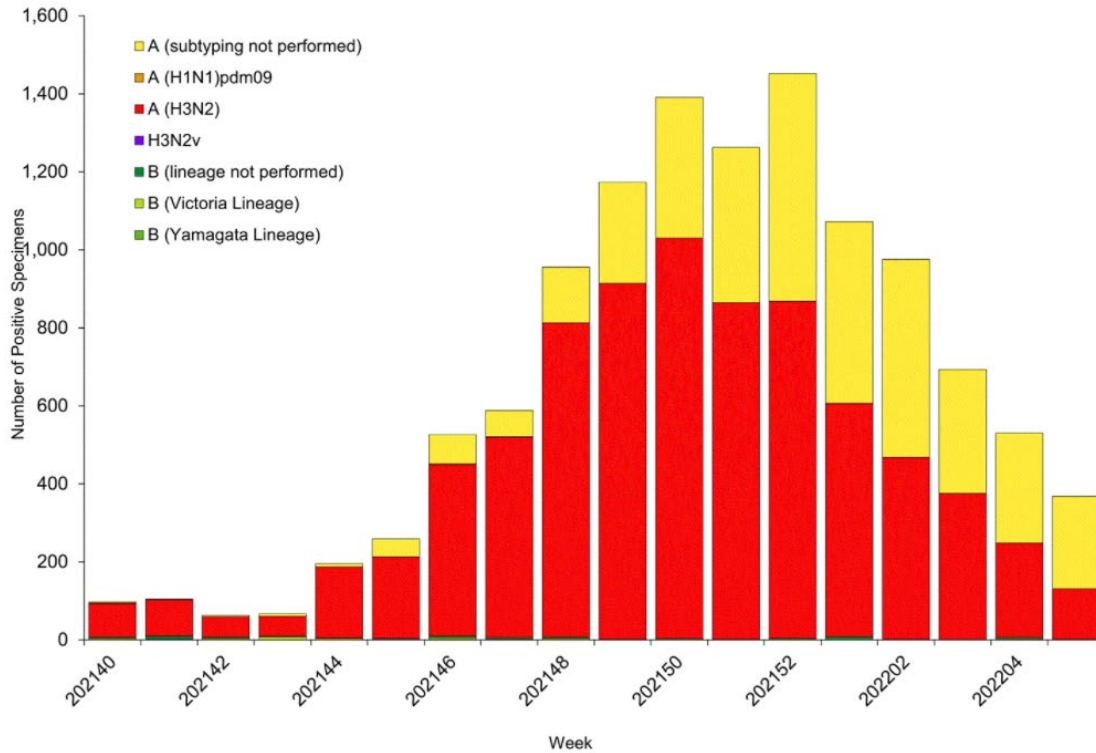
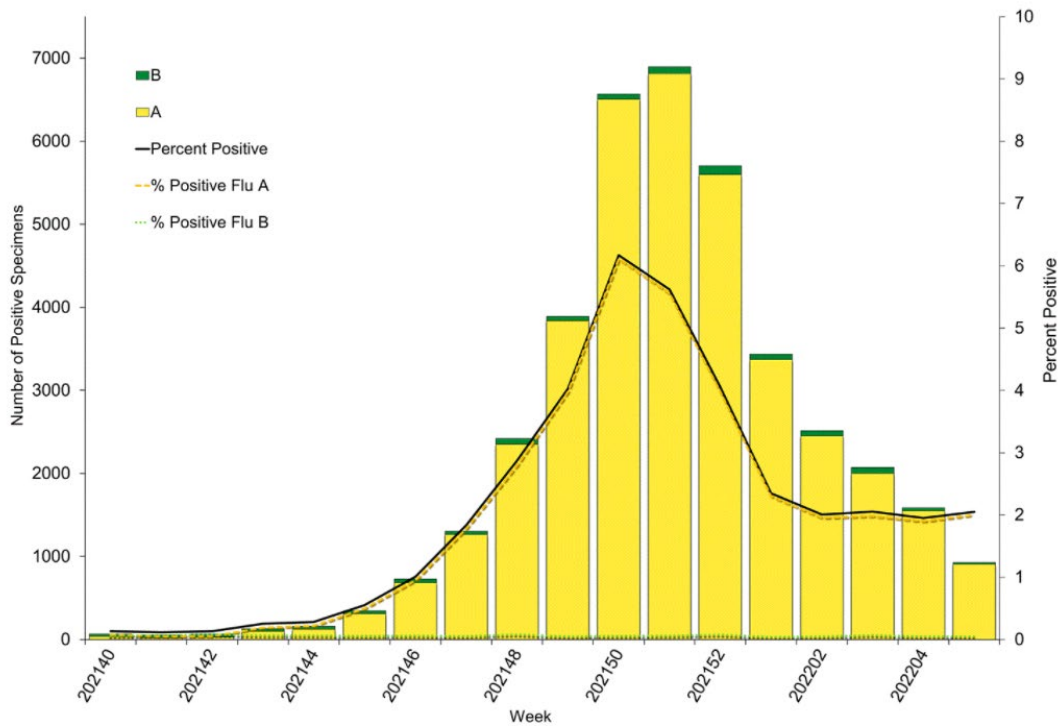


Figure 4. Influenza Positive Tests Reported to CDC by U.S. Public Health Laboratories, National Summary, October 3, 2021- February 5, 2022



Source: <https://www.cdc.gov/flu/weekly/index.htm>

Figure 5. Influenza Positive Tests Reported to CDC by U.S. Clinical Laboratories, National Summary, October 3, 2021- February 5, 2022



Source: <https://www.cdc.gov/flu/weekly/index.htm>

Figure 6. 2021-2022 Influenza Vaccine Composition, Northern Hemisphere:

Egg-based vaccine composition recommendations:

- an A/Victoria/2570/2019 (H1N1) pdm09-like virus;
- an A/Cambodia/e0826360/2020 (H3N2)-like virus;
- a B/Washington/02/2019- like virus (B/Victoria lineage);
- a B/Phuket/3073/2013-like virus (B/Yamagata lineage).

Cell- or recombinant-based vaccine composition recommendations:

- an A/Wisconsin/588/2019 (H1N1) pdm09-like virus;
- an A/Cambodia/e0826360/2020 (H3N2)-like virus;
- a B/Washington/02/2019- like virus (B/Victoria lineage);
- a B/Phuket/3073/2013-like virus (B/Yamagata lineage).

Figure 7. U.S. Virologic Surveillance, Week 5

	Week 5	Data Cumulative since October 3, 2021 (Week 40)
No. of specimens tested	45,382	1,506,399
No. of positive specimens (%)	930 (2.0%)	38,863 (2.6%)
<i>Positive specimens by type</i>		
Influenza A	908 (97.6%)	37,953 (97.7%)
Influenza B	22 (2.4%)	910 (2.3%)

Source: <https://www.cdc.gov/flu/weekly/index.htm>

Figure 8. ESSENCE Syndromic Surveillance for Influenza-like Illness: Denton County, August 01, 2021- February 05, 2022

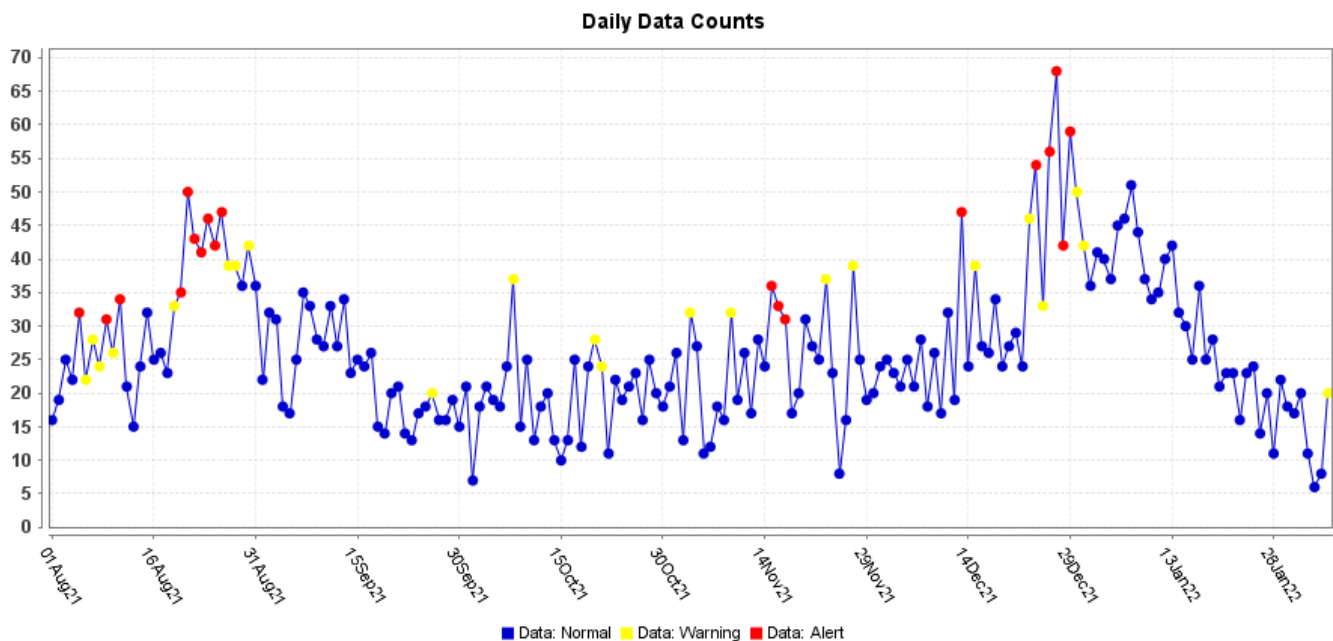
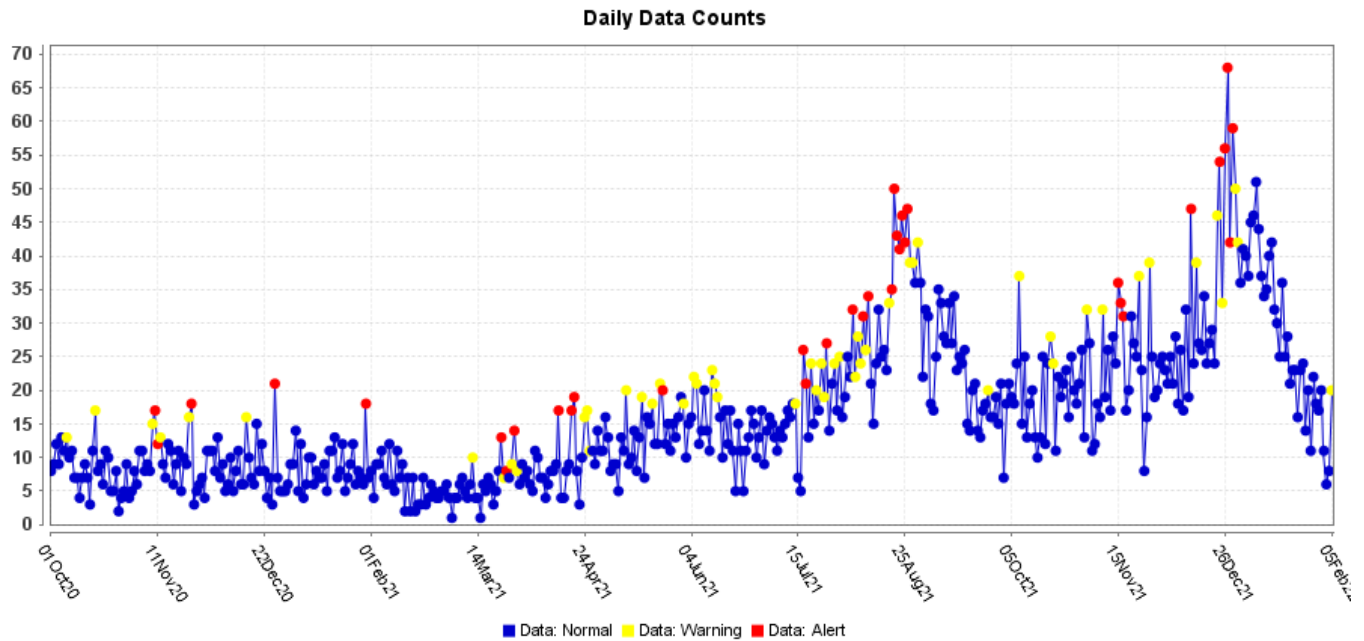


Figure 9. ESSENCE Syndromic Surveillance for Influenza-like Illness: Denton County, October 01, 2020 – February 05, 2022



Data obtained from hospitals participating in the Electronic Surveillance System for the Early Notification of Community-based Epidemics (ESSENCE) from October 2020 through the present. Depicted are the numbers of persons presenting to Emergency Departments according to patient location (Denton region) with self-reported chief complaints of influenza-like illness.

Figure 10. Pneumonia and Influenza Mortality from the National Center for Health Statistics Mortality Surveillance System: Data as of February 10, 2022

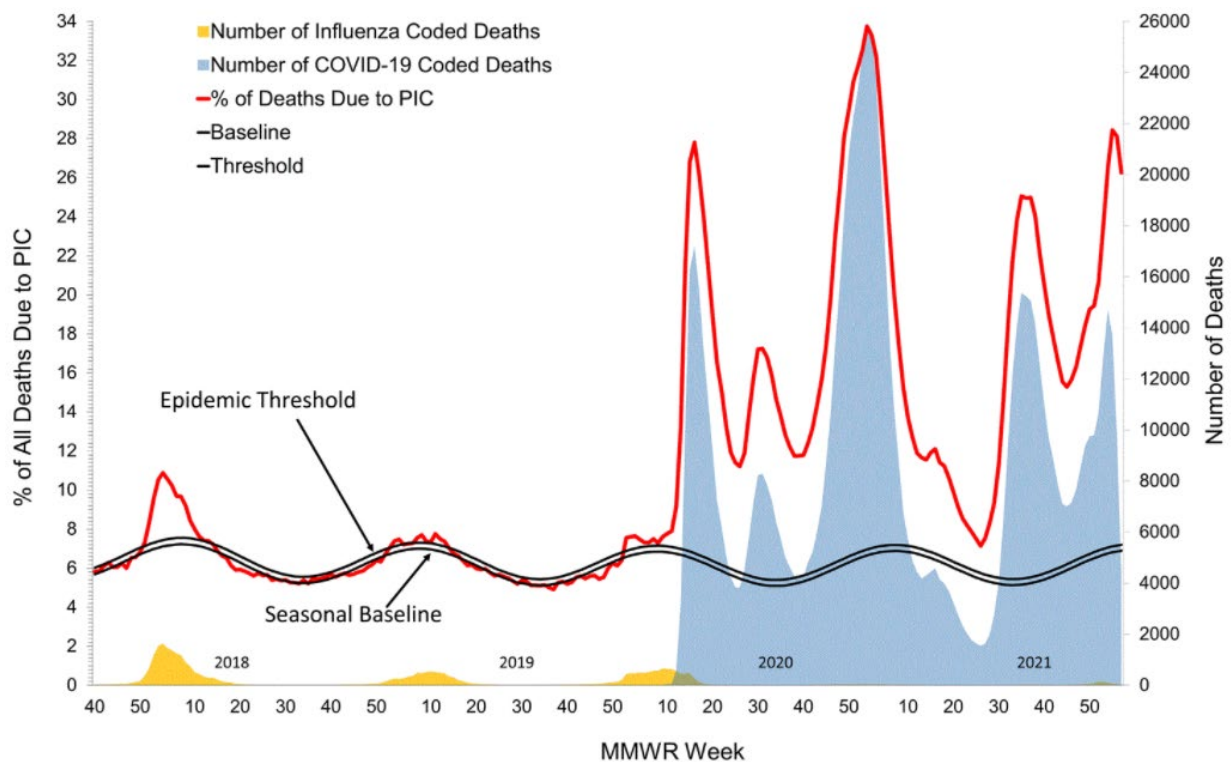


Figure 11. 2021-22 Influenza Season Week 5 ending February 05, 2022

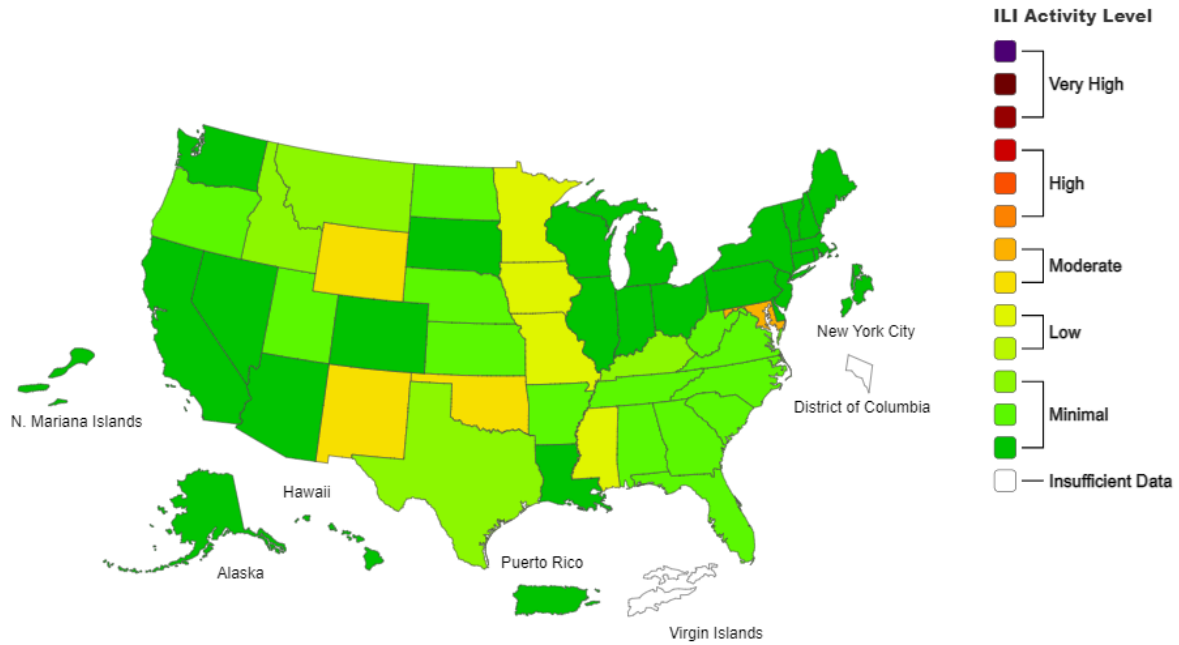
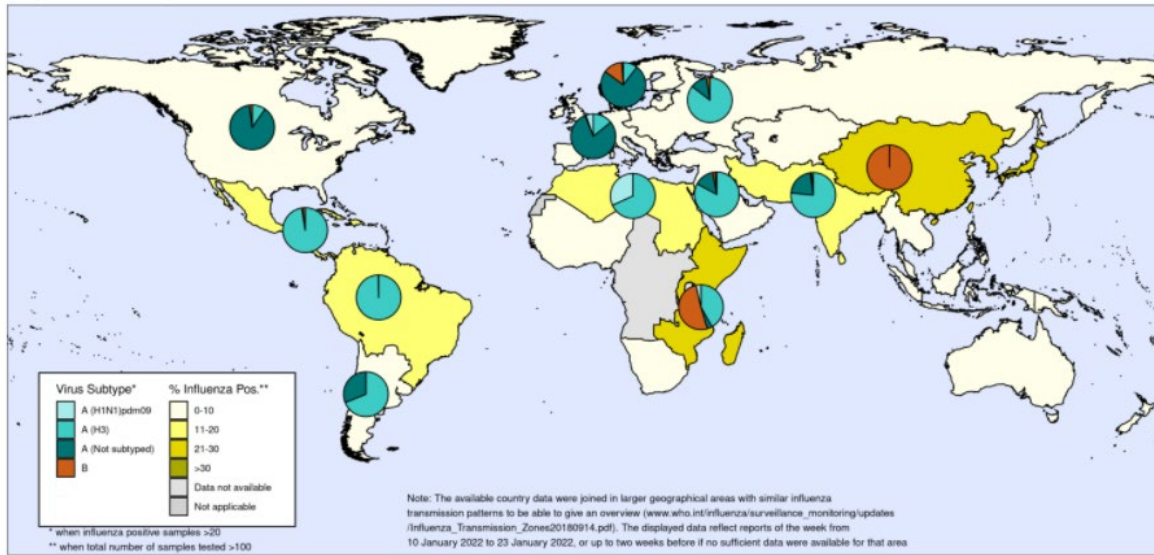


Figure 12. Percentage of Respiratory Specimens that tested Positive for Influenza: WHO, Status as of February 04, 2022



The boundaries and names shown and the designations used on this map do not imply the expression of any opinion whatsoever on the part of the World Health Organization concerning the legal status of any country, territory, city or area or of its authorities, or concerning the delimitation of its frontiers or boundaries. Dotted and dashed lines on maps represent approximate border lines for which there may not yet be full agreement.



Data source: Global Influenza Surveillance and Response System (GISRS), FluNet (www.who.int/flu-net)
Copyright WHO 2022. All rights reserved.



Please direct inquiries to Denton County Public Health at
epidemiology@dentoncounty.com or 940-349-2909