

Denton County Public Health

2021 – 2022 Influenza Surveillance Program

CDC Week 4, Week Ending January 29, 2022



Epidemiologic Overview

Denton County

- Low influenza activity was reported in Denton County for week 4.
- 11 positive influenza tests (8 Flu A and 3 Flu B) and 1 hospitalization were reported by Denton County sentinel providers for week 4.
- Syndromic surveillance for influenza-like illness (ILI) in Denton County decreased for week 4 when compared to the previous week.
- 0 influenza-associated deaths have been reported in Denton County for the 2021-2022 season.

Texas

- Intensity of influenza-like illness in the state of Texas was low for week 4.
- The percentage of visits for ILI as reported by ILINet providers decreased to 3.01% in week 4 compared to the previous week.
- The percentage of specimens testing positive for influenza by hospital laboratories in Texas increased to 3.51% in week 4 compared to the previous week.

US

- Influenza activity has decreased in recent weeks, but sporadic activity continues across the country.
- The majority of influenza viruses detected are A(H3N2).
- The proportion of outpatient visits for influenza-like illness (ILI) was 2.0%, which is below the national baseline of 2.5%.
- The percentage of specimens testing positive in clinical labs for influenza in the US was 1.7% for Week 4.
- The proportion of deaths attributed to pneumonia, influenza, or COVID-19 (PIC) from the National Center for Health Statistics Mortality Surveillance System for week 4 was 28.6%. This percentage is **above** the epidemic threshold of 7.2% for week 4.

Figure 1. Influenza Surveillance Summary: Denton County Hospitals and Providers

Week Ending	12/25/21	01/01/22	01/08/22	01/15/22	01/22/22	01/29/22	10/24/21 - 01/29/22
CDC Week	51	52	1	2	3	4	
Influenza Tests Performed Weekly	618	807	661	574	396	269	5255
Total Positive Influenza Tests	65	41	24	27	13	11	286
Percent Positive Influenza Tests*	10.5%	5.0%	3.6%	4.7%	3.3%	4.1%	
Positive A Influenza	57	34	16	14	9	8	223
Positive B Influenza	8	7	8	13	4	3	63
Non-differentiated Influenza	0	0	0	0	0	0	0
Influenza Hospitalizations	7	2	6	3	2	1	27
Influenza-associated Pediatric Deaths	0	0	0	0	0	0	0
Influenza-associated Adult Deaths	0	0	0	0	0	0	0

* Percent positive tests only includes positive tests from providers reporting number of tests performed weekly

Figure 2. Influenza Positive Tests and Percent Positive, Denton County Hospitals and Providers, 2021-2022 Season

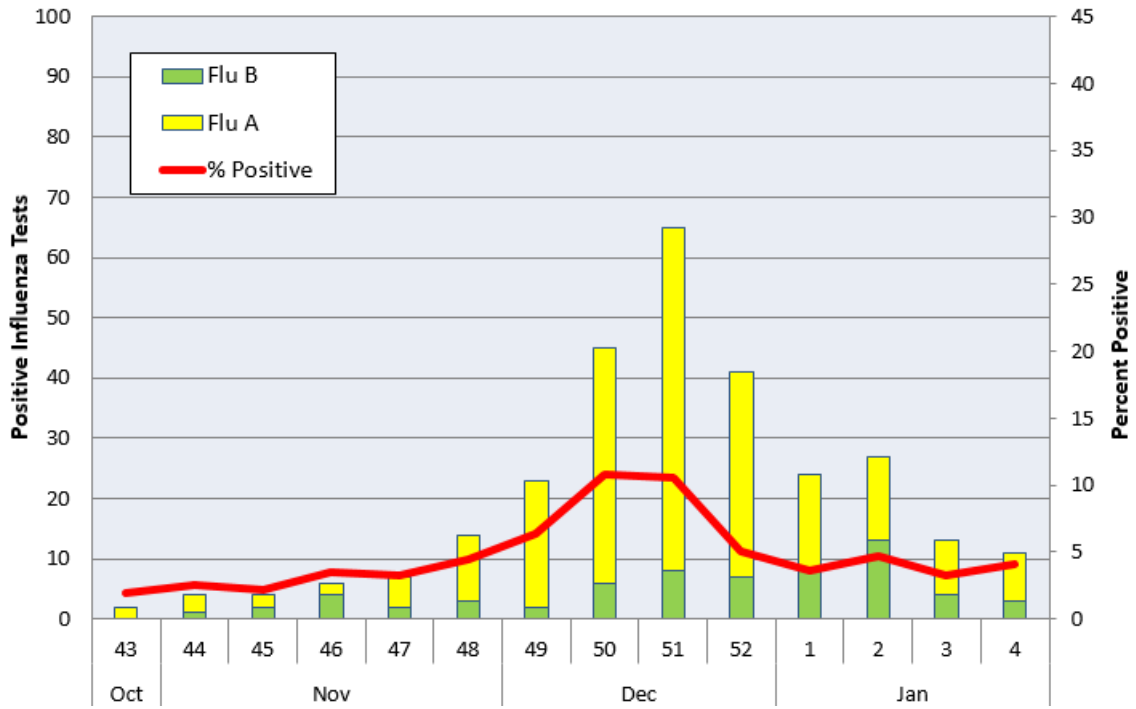


Figure 3. Seasonal Comparison of Influenza Percent Positive, Denton County, 2019 – 2022

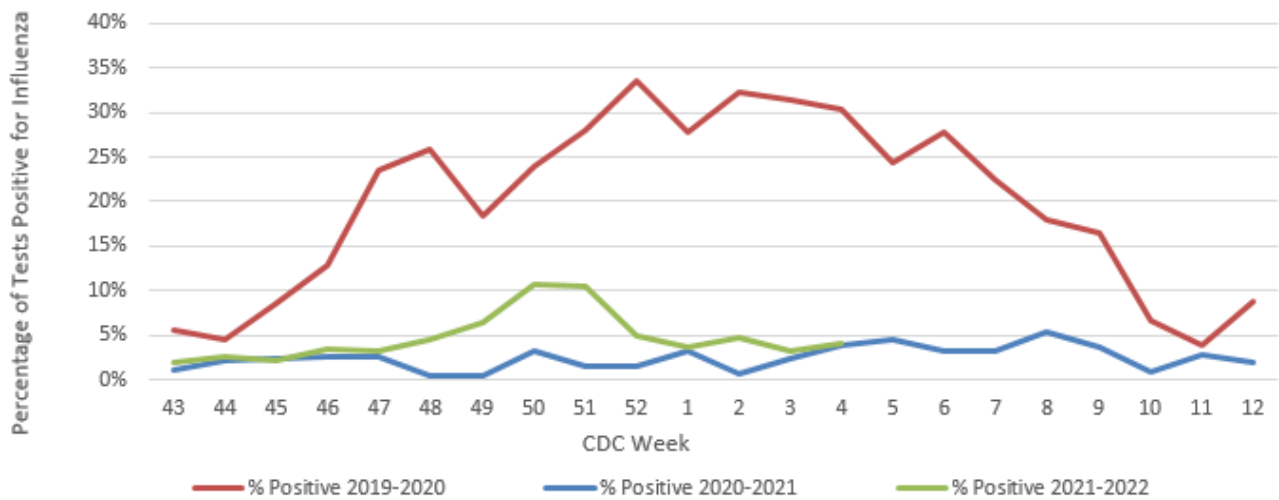


Figure 4. Influenza Positive Tests Reported to CDC by U.S. Public Health Laboratories, National Summary, October 3, 2021- January 29, 2022

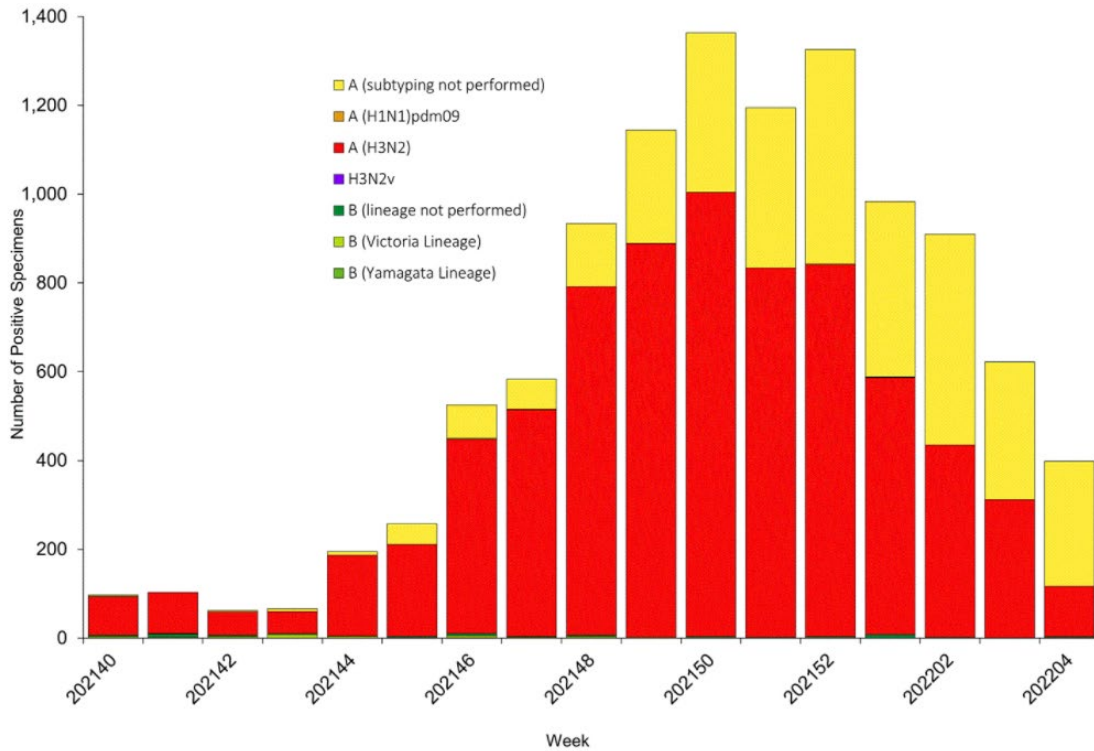


Figure 5. Influenza Positive Tests Reported to CDC by U.S. Clinical Laboratories, National Summary, October 3, 2021- January 29, 2022

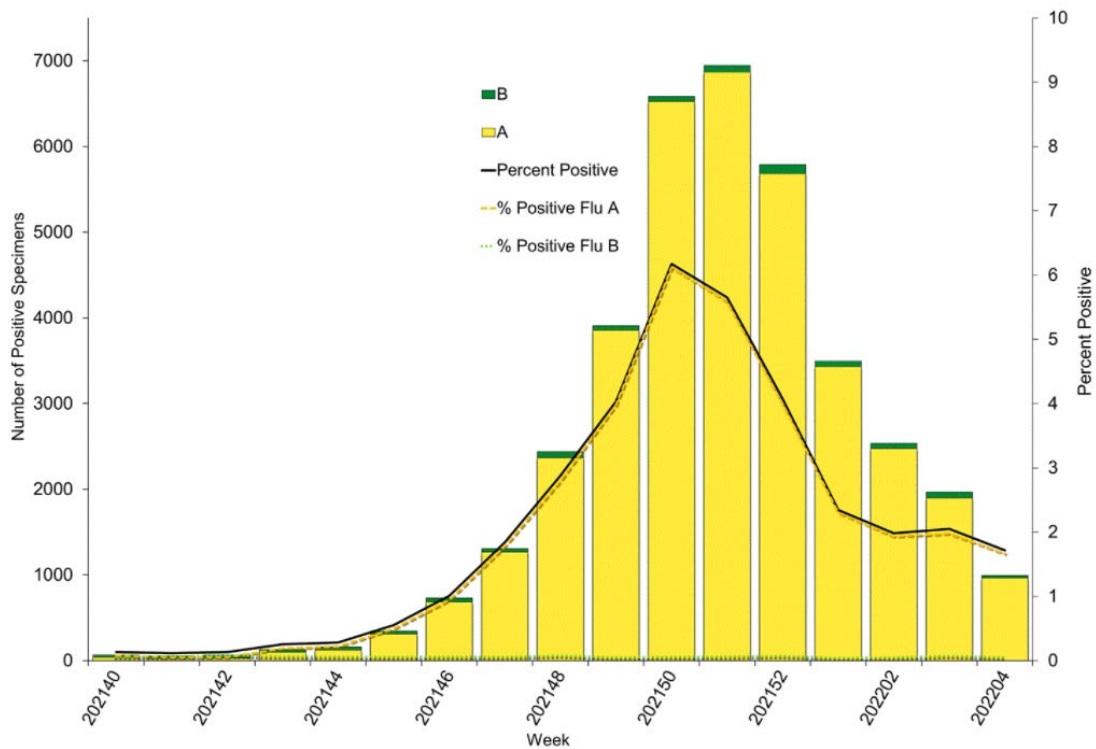


Figure 6. 2021-2022 Influenza Vaccine Composition, Northern Hemisphere:

Egg-based vaccine composition recommendations:

- an A/Victoria/2570/2019 (H1N1) pdm09-like virus;
- an A/Cambodia/e0826360/2020 (H3N2)-like virus;
- a B/Washington/02/2019- like virus (B/Victoria lineage);
- a B/Phuket/3073/2013-like virus (B/Yamagata lineage).

Cell- or recombinant-based vaccine composition recommendations:

- an A/Wisconsin/588/2019 (H1N1) pdm09-like virus;
- an A/Cambodia/e0826360/2020 (H3N2)-like virus;
- a B/Washington/02/2019- like virus (B/Victoria lineage);
- a B/Phuket/3073/2013-like virus (B/Yamagata lineage).

Figure 7. U.S. Virologic Surveillance, Week 4

	Week 4	Data Cumulative since October 3, 2021 (Week 40)
No. of specimens tested	57,889	1,442,367
No. of positive specimens (%)	994 (1.7%)	37,514 (2.6%)
<i>Positive specimens by type</i>		
Influenza A	964 (97.0%)	36,644 (97.7%)
Influenza B	30 (3.0%)	870 (2.3%)

Figure 8. ESSENCE Syndromic Surveillance for Influenza-like Illness: Denton County, August 01, 2021- January 29, 2022

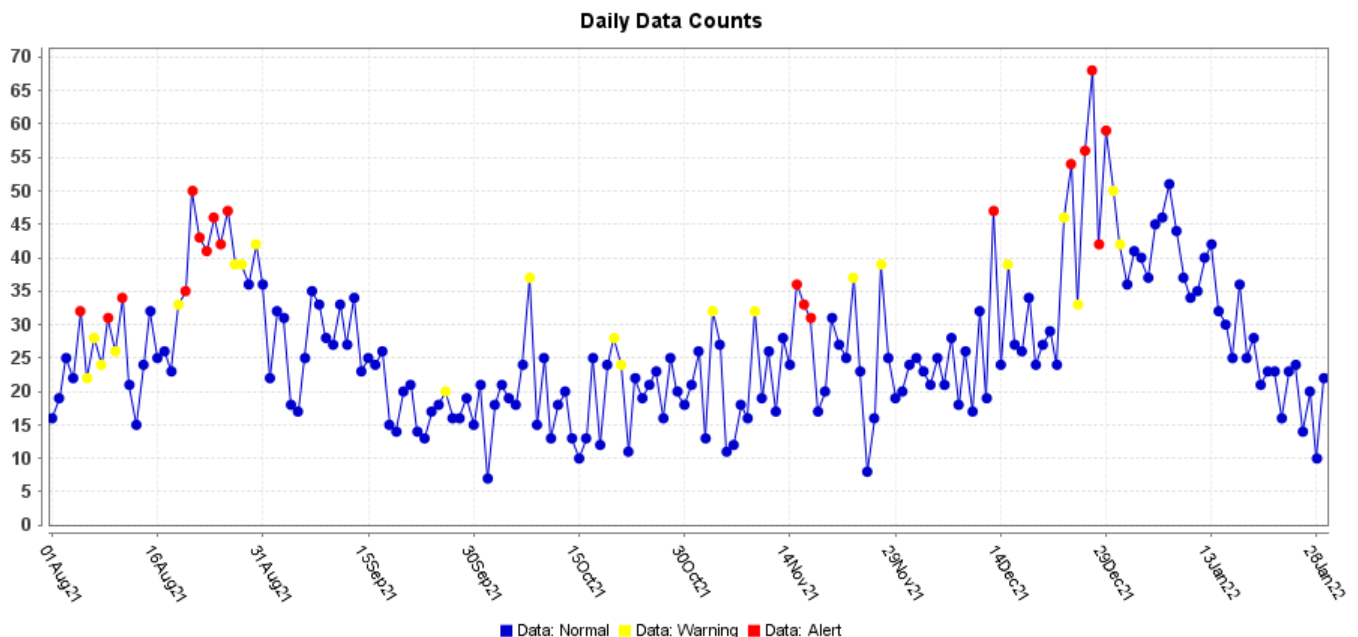


Figure 9. ESSENCE Syndromic Surveillance for Influenza-like Illness: Denton County, October 01, 2020 – January 29, 2022

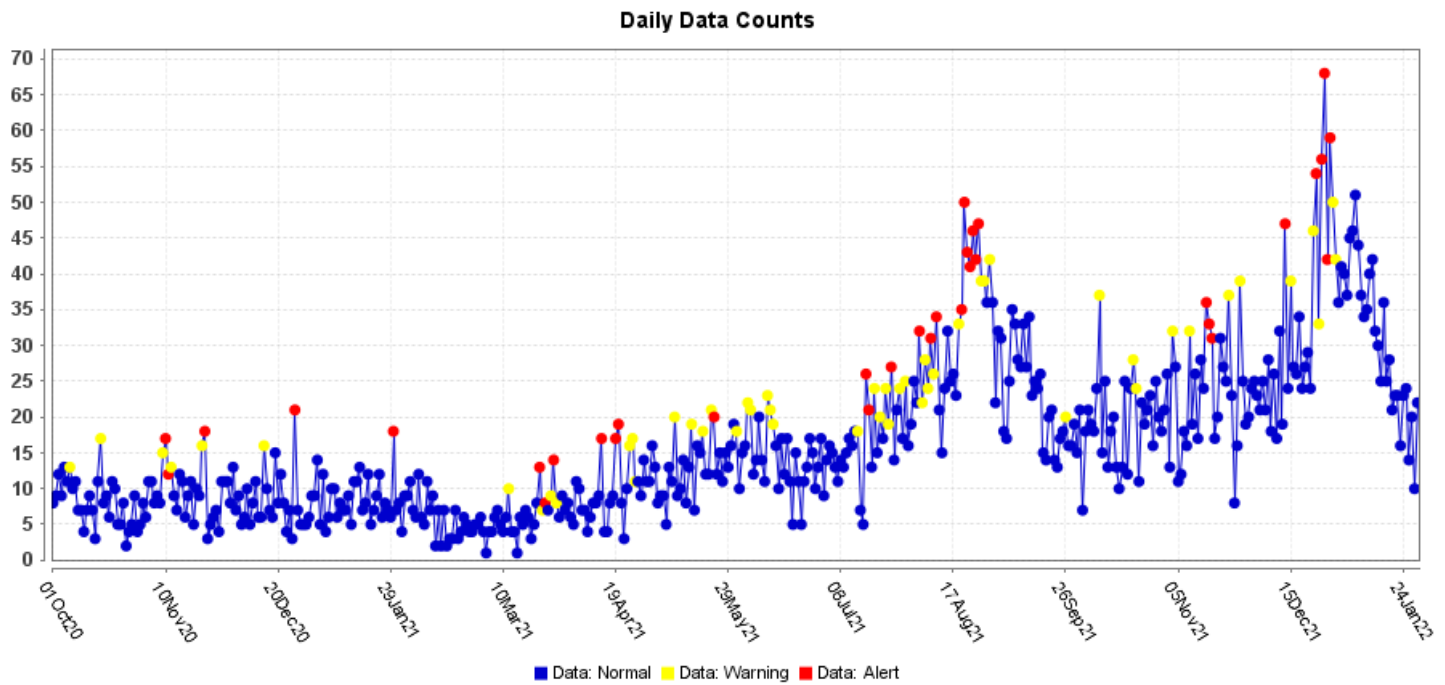
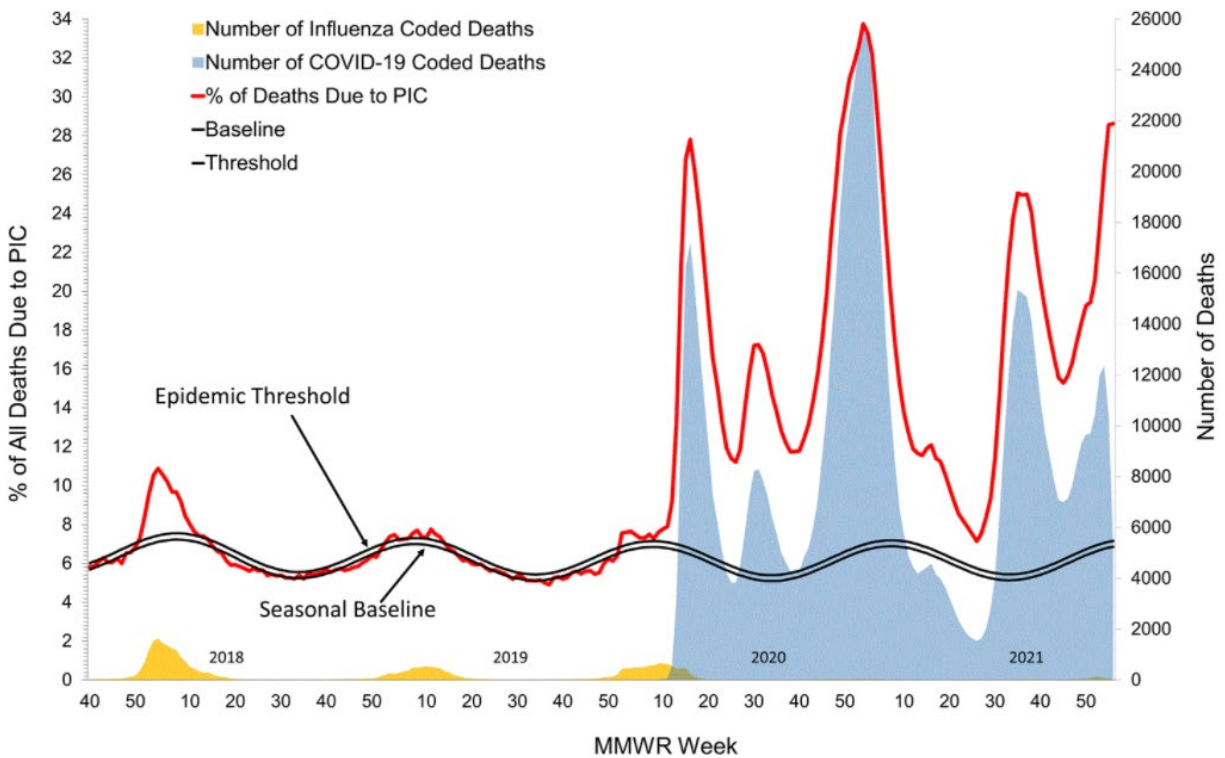


Figure 10. Pneumonia and Influenza Mortality from the National Center for Health Statistics Mortality Surveillance System: Data as of February 3, 2022



Source: <https://www.cdc.gov/flu/weekly/index.htm>



Please direct inquiries to Denton County Public Health at
epidemiology@dentoncounty.com or 940-349-2909