

# Denton County Public Health

## 2021 – 2022 Influenza Surveillance Program

### CDC Week 52, Week Ending January 01, 2022



## Epidemiologic Overview

### Denton County

- Low influenza activity was reported in Denton County for week 52.
- 41 positive influenza tests (34 Flu A and 7 Flu B) and 2 hospitalizations were reported by Denton County sentinel providers for week 52.
- Syndromic surveillance for influenza-like illness (ILI) in Denton County increased for week 52 when compared to the previous week.
- 0 influenza-associated deaths have been reported in Denton County for the 2021-2022 season.

### Texas

- Influenza activity in the state of Texas was high for week 52.
- The percentage of visits for ILI as reported by ILINet providers increased to 5.33% in week 52 compared to the previous week.
- The percentage of specimens testing positive for influenza by hospital laboratories in Texas decreased to 4.65% in week 52 compared to the previous week.

### US

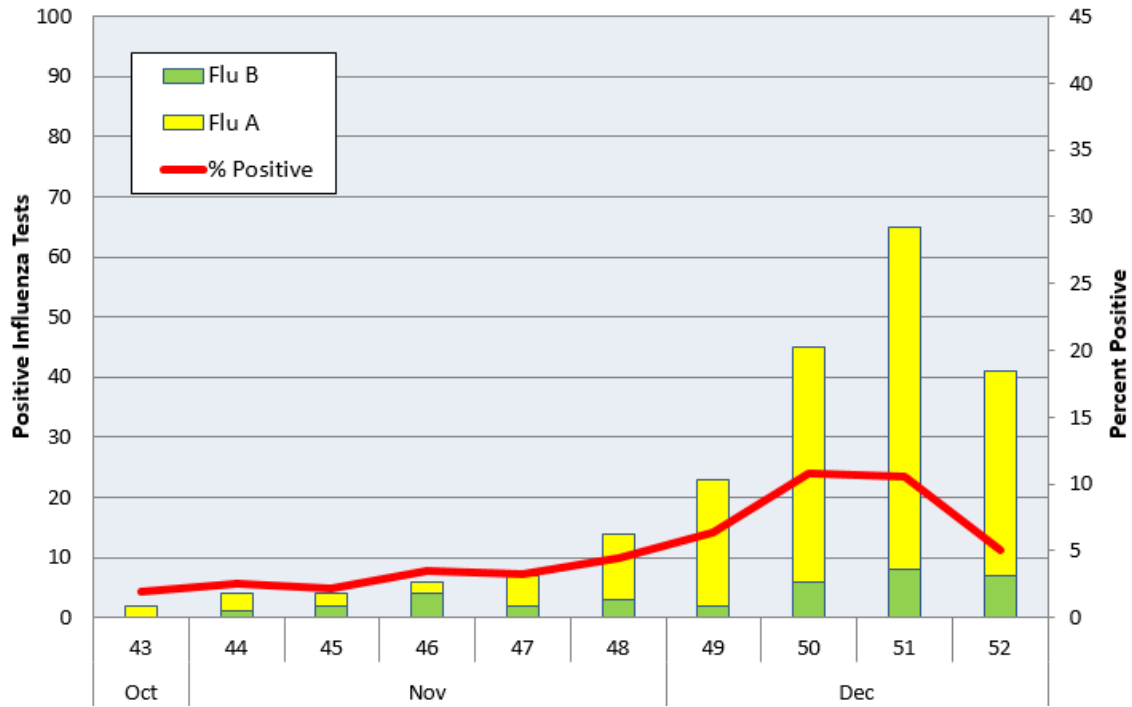
- Seasonal influenza activity in the United States is increasing, including indicators that track hospitalizations. The amount of activity varies by region.
- The proportion of outpatient visits for influenza-like illness (ILI) was 4.8%, which is above the national baseline of 2.5%.
- The percentage of specimens testing positive in clinical labs for influenza in the US was 3.8% for Week 52.
- The proportion of deaths attributed to pneumonia, influenza, or COVID-19 (PIC) from the National Center for Health Statistics Mortality Surveillance System for week 52 was 19.9%. This percentage is **above** the epidemic threshold of 6.9% for week 52.

**Figure 1. Influenza Surveillance Summary: Denton County Hospitals and Providers**

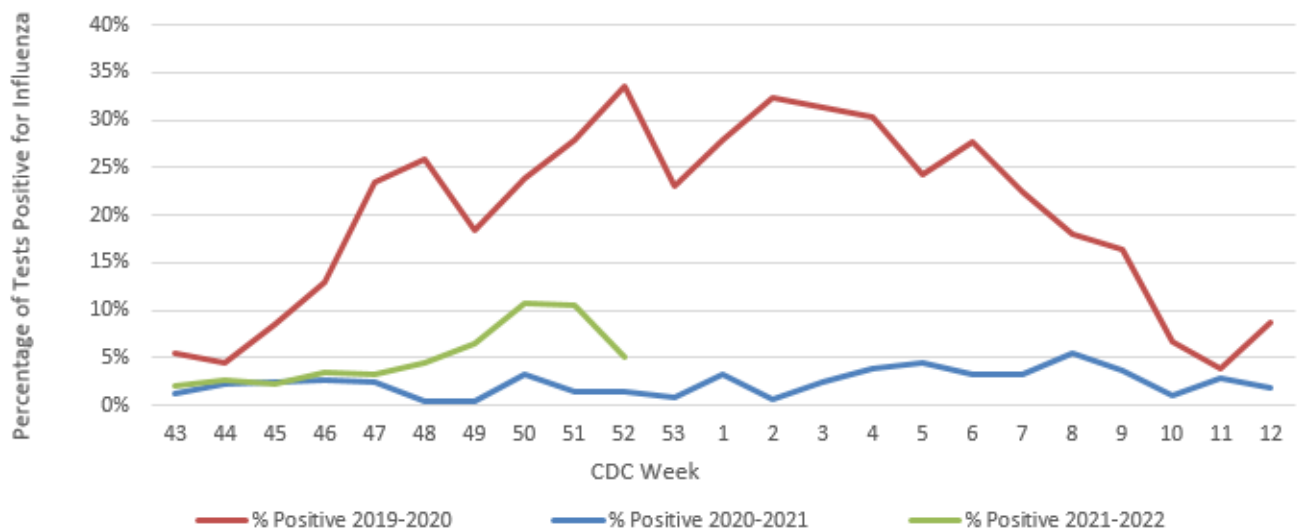
Week Ending	11/20/21	11/27/21	12/04/21	12/11/21	12/18/21	12/25/21	01/01/22	10/24/21 - 01/01/22
<b>CDC Week</b>	<b>46</b>	<b>47</b>	<b>48</b>	<b>49</b>	<b>50</b>	<b>51</b>	<b>52</b>	
<b>Influenza Tests Performed Weekly</b>	171	213	314	359	417	618	817	3355
<b>Total Positive Influenza Tests</b>	6	7	14	23	45	65	41	211
<b>Percent Positive Influenza Tests*</b>	3.5%	3.3%	4.5%	6.4%	10.8%	10.5%	5.0%	
<b>Positive A Influenza</b>	2	5	11	21	39	57	34	176
<b>Positive B Influenza</b>	4	2	3	2	6	8	7	35
<b>Non-differentiated Influenza</b>	0	0	0	0	0	0	0	0
<b>Influenza Hospitalizations</b>	1	0	1	0	3	7	2	16
<b>Influenza-associated Pediatric Deaths</b>	0	0	0	0	0	0	0	0
<b>Influenza-associated Adult Deaths</b>	0	0	0	0	0	0	0	0

\* Percent positive tests only includes positive tests from providers reporting number of tests performed weekly

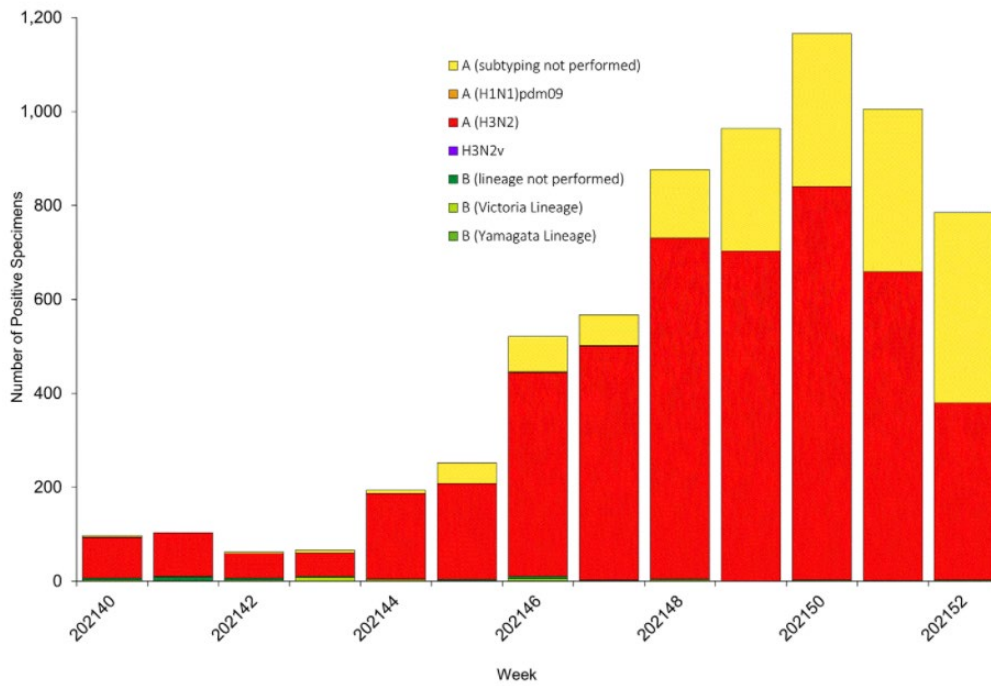
**Figure 2. Influenza Positive Tests and Percent Positive, Denton County Hospitals and Providers, 2021-2022 Season**



**Figure 3. Seasonal Comparison of Influenza Percent Positive, Denton County, 2019 – 2022**

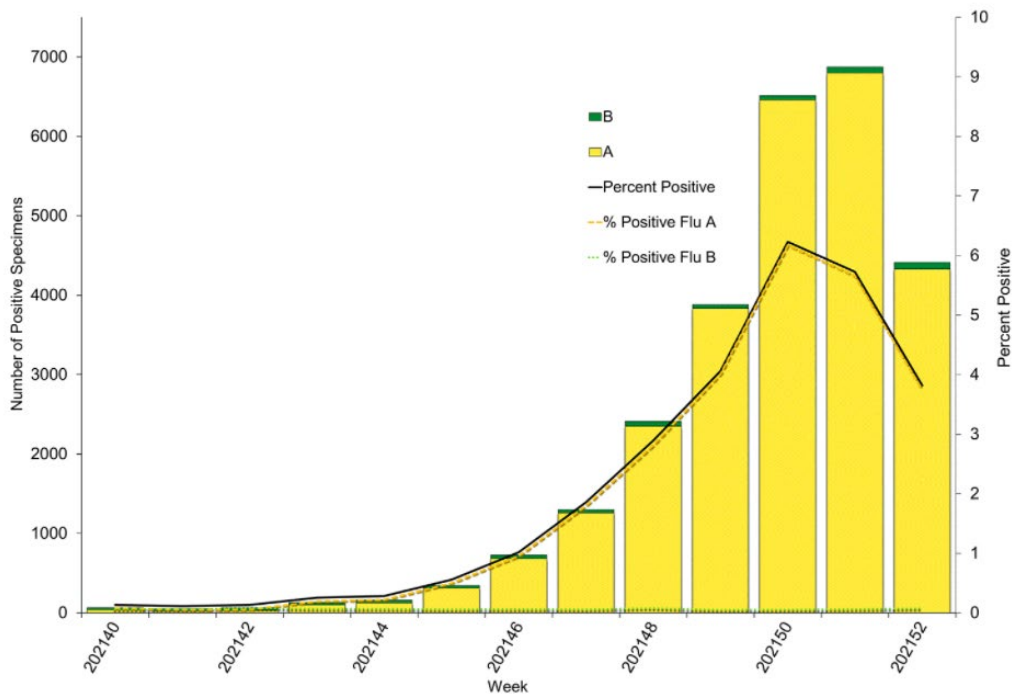


**Figure 4. Influenza Positive Tests Reported to CDC by U.S. Public Health Laboratories, National Summary, October 3, 2021- January 1, 2022**



Source: <https://www.cdc.gov/flu/weekly/index.htm>

**Figure 5. Influenza Positive Tests Reported to CDC by U.S. Clinical Laboratories, National Summary, October 3, 2021- January 1, 2022**



Source: <https://www.cdc.gov/flu/weekly/index.htm>

**Figure 6. 2021-2022 Influenza Vaccine Composition, Northern Hemisphere:**

Egg-based vaccine composition recommendations:

- an A/Victoria/2570/2019 (H1N1) pdm09-like virus;
- an A/Cambodia/e0826360/2020 (H3N2)-like virus;
- a B/Washington/02/2019- like virus (B/Victoria lineage);
- a B/Phuket/3073/2013-like virus (B/Yamagata lineage).

Cell- or recombinant-based vaccine composition recommendations:

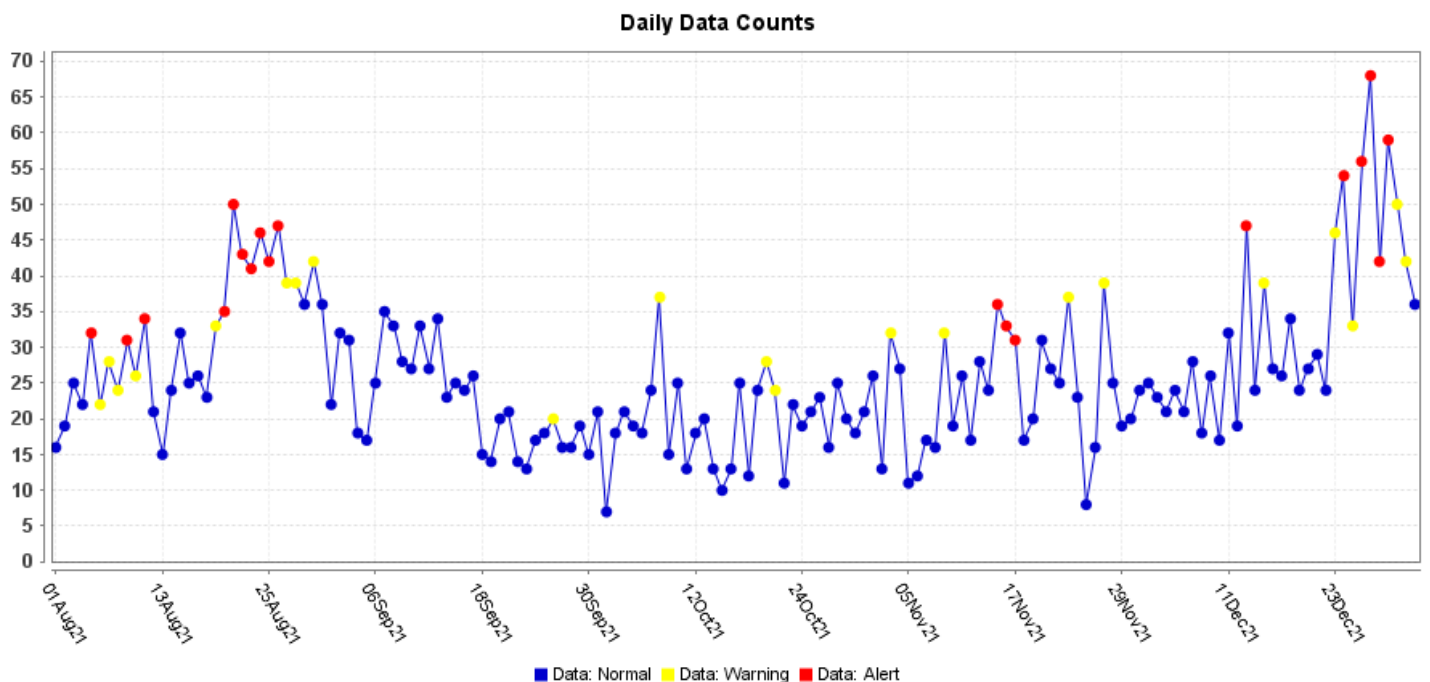
- an A/Wisconsin/588/2019 (H1N1) pdm09-like virus;
- an A/Cambodia/e0826360/2020 (H3N2)-like virus;
- a B/Washington/02/2019- like virus (B/Victoria lineage);
- a B/Phuket/3073/2013-like virus (B/Yamagata lineage).

**Figure 7. U.S. Virologic Surveillance, Week 52**

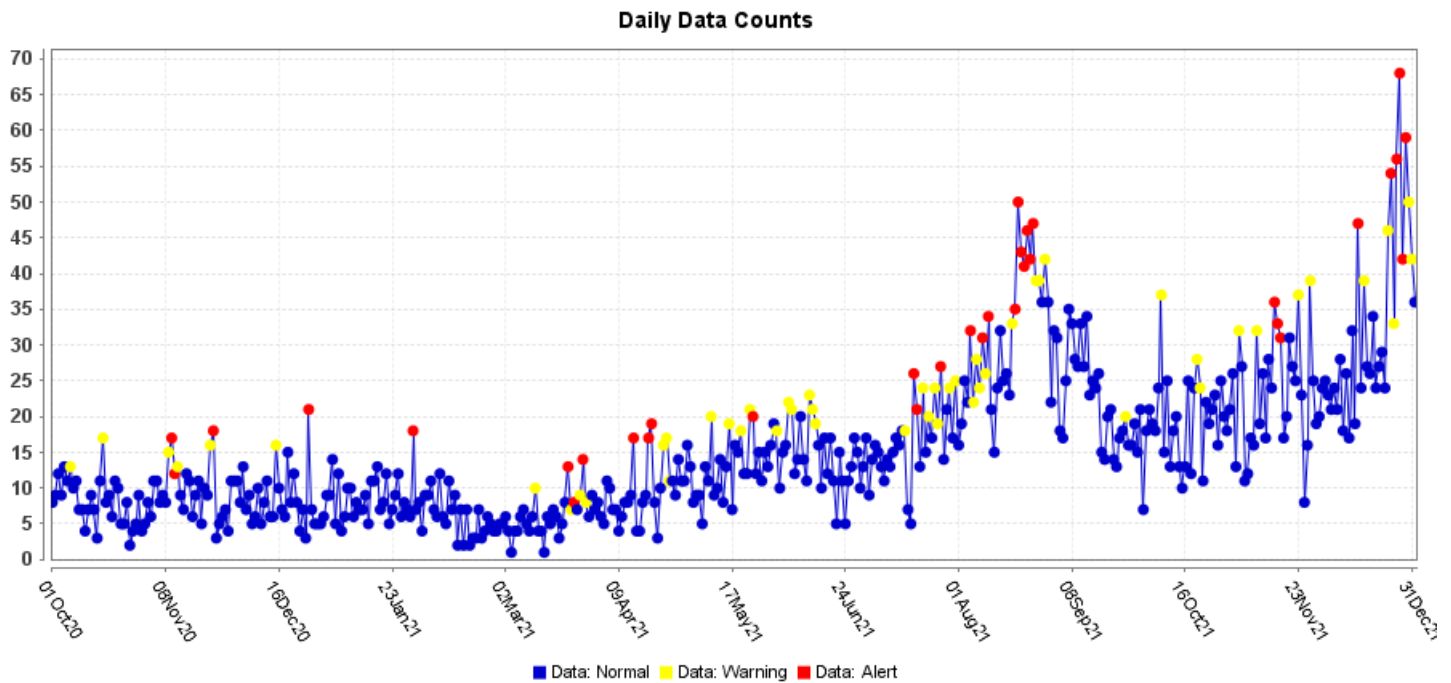
	Week 52	Data Cumulative since October 3, 2021 (Week 40)
No. of specimens tested	115,580	974,946
No. of positive specimens (%)	4,413 (3.8%)	26,946 (2.8%)
<i>Positive specimens by type</i>		
Influenza A	4,329 (98.1%)	26,328 (97.7%)
Influenza B	84 (1.9%)	618 (2.3%)

Source: <https://www.cdc.gov/flu/weekly/index.htm>

**Figure 8. ESSENCE Syndromic Surveillance for Influenza-like Illness: Denton County, August 01, 2021- January 1, 2022**

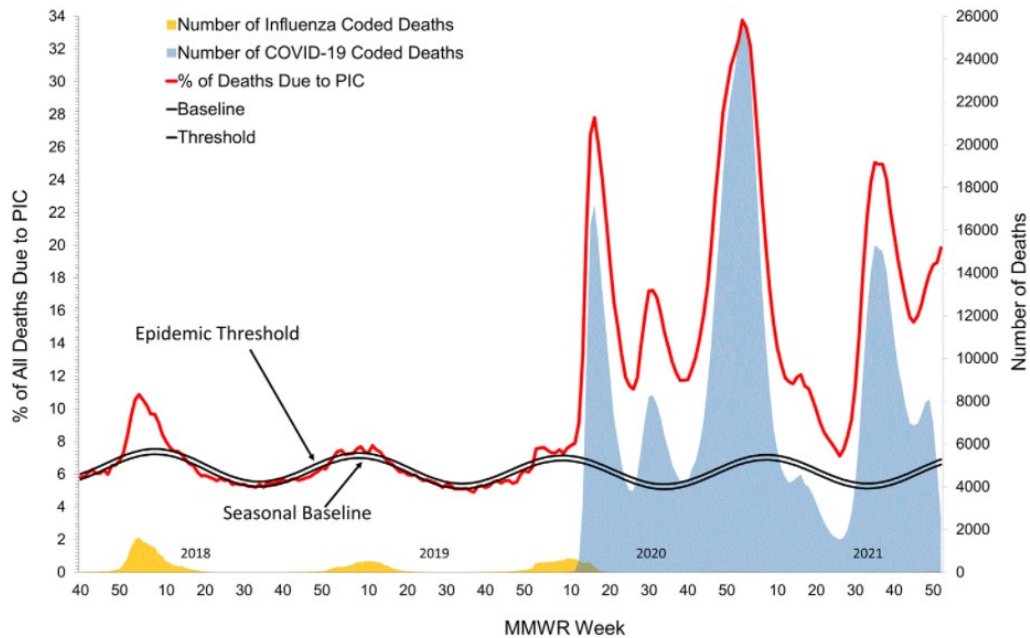


**Figure 9. ESSENCE Syndromic Surveillance for Influenza-like Illness: Denton County, October 01, 2020 – January 1, 2022**



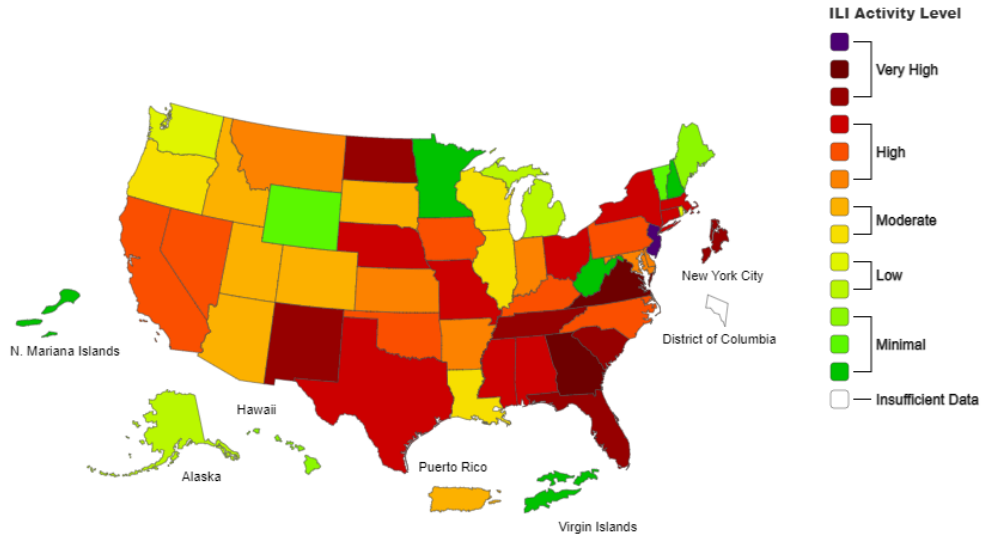
Data obtained from hospitals participating in the Electronic Surveillance System for the Early Notification of Community-based Epidemics (ESSENCE) from October 2020 through the present. Depicted are the numbers of persons presenting to Emergency Departments according to patient location (Denton region) with self-reported chief complaints of influenza-like illness.

**Figure 10. Pneumonia and Influenza Mortality from the National Center for Health Statistics Mortality Surveillance System: Data as of January 6, 2022**

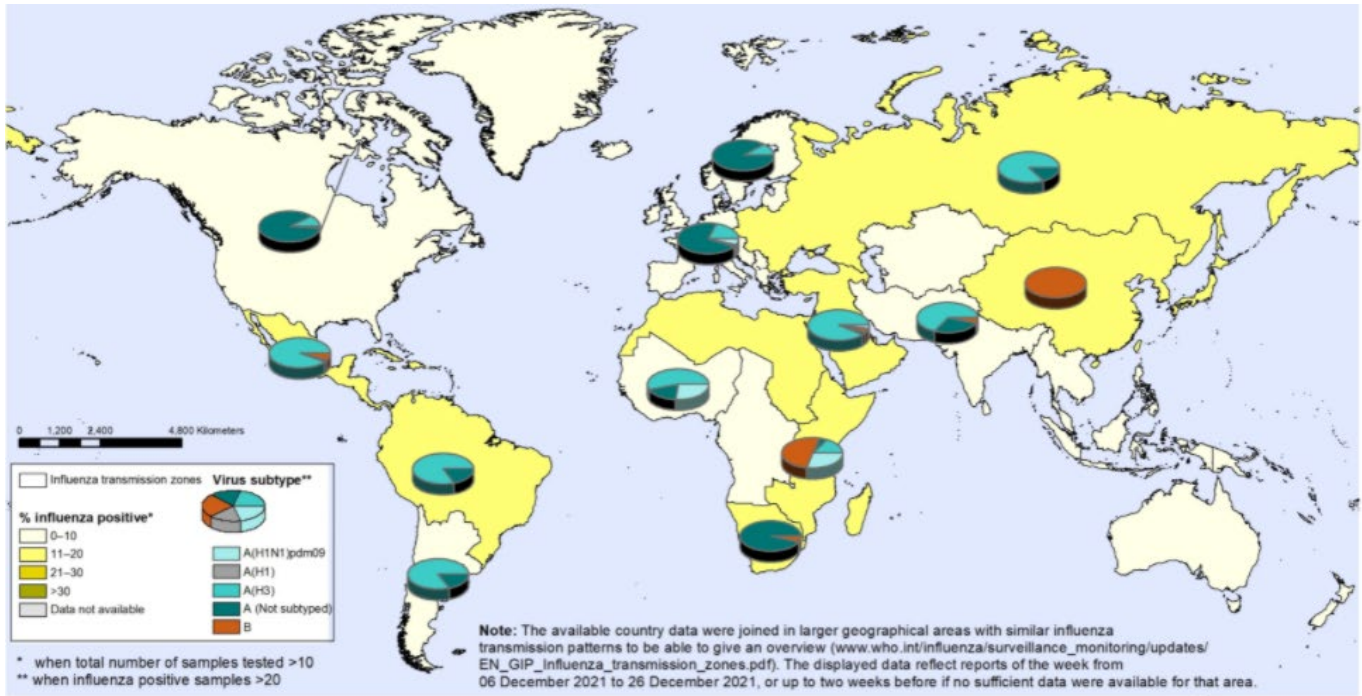


Source: <https://www.cdc.gov/flu/weekly/index.htm>

**Figure 11. 2021-22 Influenza Season Week 52 ending January 1, 2022**



**Figure 12. Percentage of Respiratory Specimens that tested Positive for Influenza: WHO, Status as of January 07, 2022**



The boundaries and names shown and the designations used on this map do not imply the expression of any opinion whatsoever on the part of the World Health Organization concerning the legal status of any country, territory, city or area or of its authorities, or concerning the delimitation of its frontiers or boundaries. Dotted and dashed lines on maps represent approximate border lines for which there may not yet be full agreement.

Data Source:  
Global Influenza Surveillance and Response System (GISRS),  
FluNet ([www.who.int/flu-net](http://www.who.int/flu-net))



Please direct inquiries to Denton County Public Health at [epidemiology@dentoncounty.com](mailto:epidemiology@dentoncounty.com) or 940-349-2909