

Denton County Public Health

2021 – 2022 Influenza Surveillance Program

CDC Week 49, Week Ending December 11, 2021



Epidemiologic Overview

Denton County

- Low influenza activity was reported in Denton County for week 49.
- 23 positive influenza tests (21 Flu A and 2 Flu B) and 0 hospitalizations were reported by Denton County sentinel providers for week 49.
- Syndromic surveillance for influenza-like illness (ILI) in Denton County increased for week 49 when compared to the previous week.
- 0 influenza-associated deaths have been reported in Denton County for the 2021-2022 season.

Texas

- Influenza activity in the state of Texas was moderate for week 49.
- The percentage of visits for ILI as reported by ILINet providers increased to 2.97% in week 49 compared to the previous week.
- The percentage of specimens testing positive for influenza by hospital laboratories in Texas increased to 4.75% in week 49 compared to the previous week.

US

- Seasonal influenza activity in the United States is increasing, including indicators that track hospitalizations. The amount of activity varies by region.
- The proportion of outpatient visits for influenza-like illness (ILI) was 2.7%, which is above the national baseline of 2.5%.
- The percentage of specimens testing positive in clinical labs for influenza in the US was 3.5% for Week 49.
- The proportion of deaths attributed to pneumonia, influenza, or COVID-19 (PIC) from the National Center for Health Statistics Mortality Surveillance System for week 49 was 17.4%. This percentage is **above** the epidemic threshold of 6.6% for week 49.

Figure 1. Influenza Surveillance Summary: Denton County Hospitals and Providers

Week Ending	10/30/21	11/06/21	11/13/21	11/20/21	11/27/21	12/04/21	12/11/21	10/30/21 - Present
CDC Week	43	44	45	46	47	48	49	
Influenza Tests Performed Weekly	102	157	187	171	213	314	359	1503
Total Positive Influenza Tests	2	4	4	6	7	14	23	60
Percent Positive Influenza Tests*	2.0%	2.5%	2.1%	3.5%	3.3%	4.5%	6.4%	
Positive A Influenza	2	3	2	2	5	11	21	46
Positive B Influenza	0	1	2	4	2	3	2	14
Non-differentiated Influenza	0	0	0	0	0	0	0	0
Influenza Hospitalizations	0	1	1	1	0	1	0	4
Influenza-associated Pediatric Deaths	0	0	0	0	0	0	0	0
Influenza-associated Adult Deaths	0	0	0	0	0	0	0	0

* Percent positive tests only includes positive tests from providers reporting number of tests performed weekly

Figure 2. Influenza Positive Tests and Percent Positive, Denton County Hospitals and Providers, 2021-2022 Season

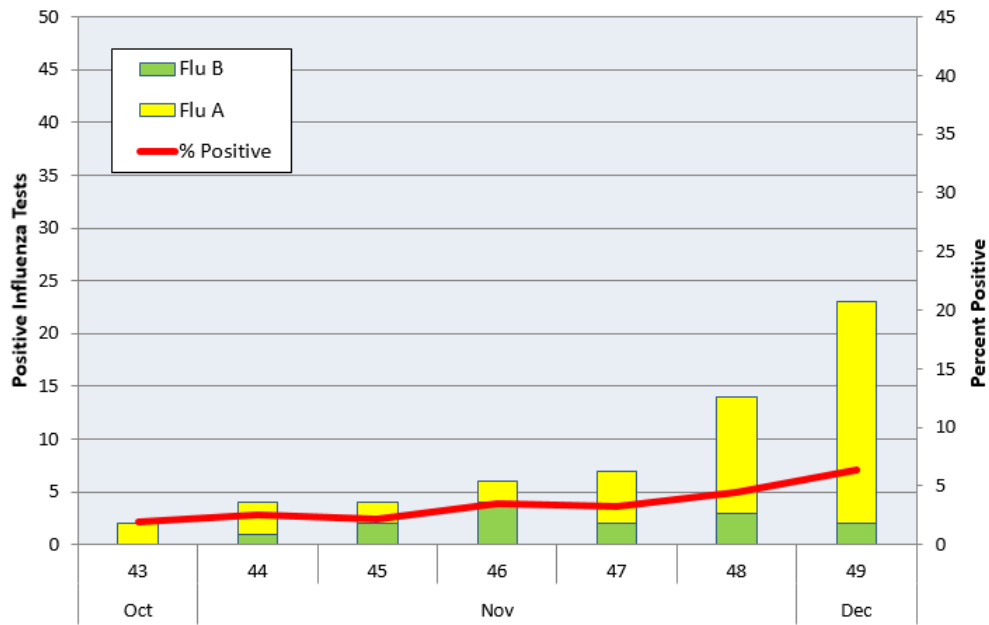


Figure 3. Seasonal Comparison of Influenza Percent Positive, Denton County, 2019 – 2022

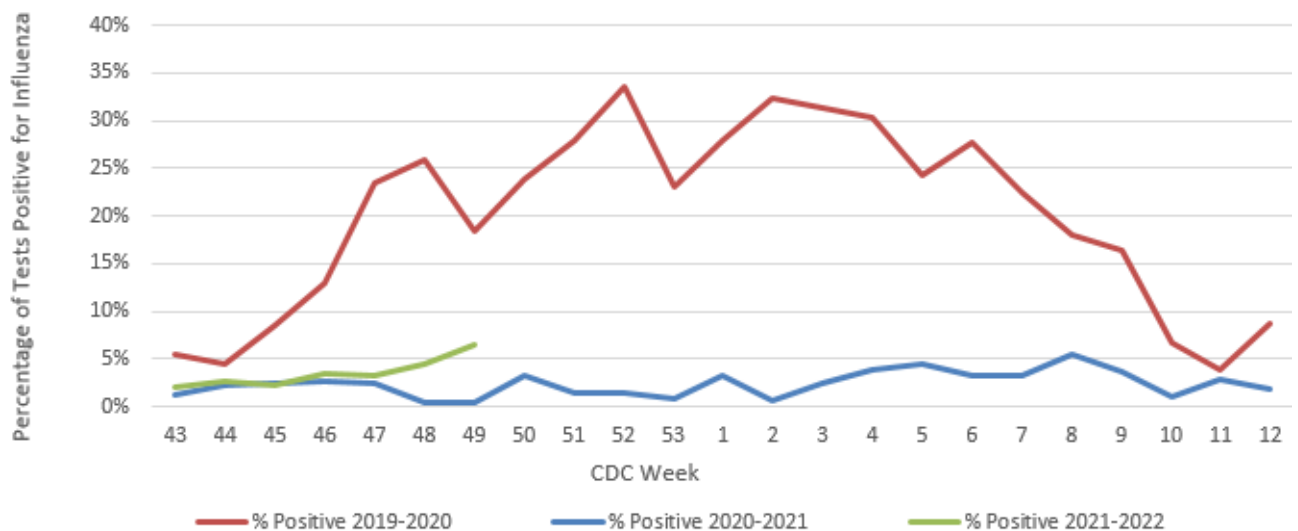


Figure 4. Influenza Positive Tests Reported to CDC by U.S. Public Health Laboratories, National Summary, October 03, 2021- December 11, 2021

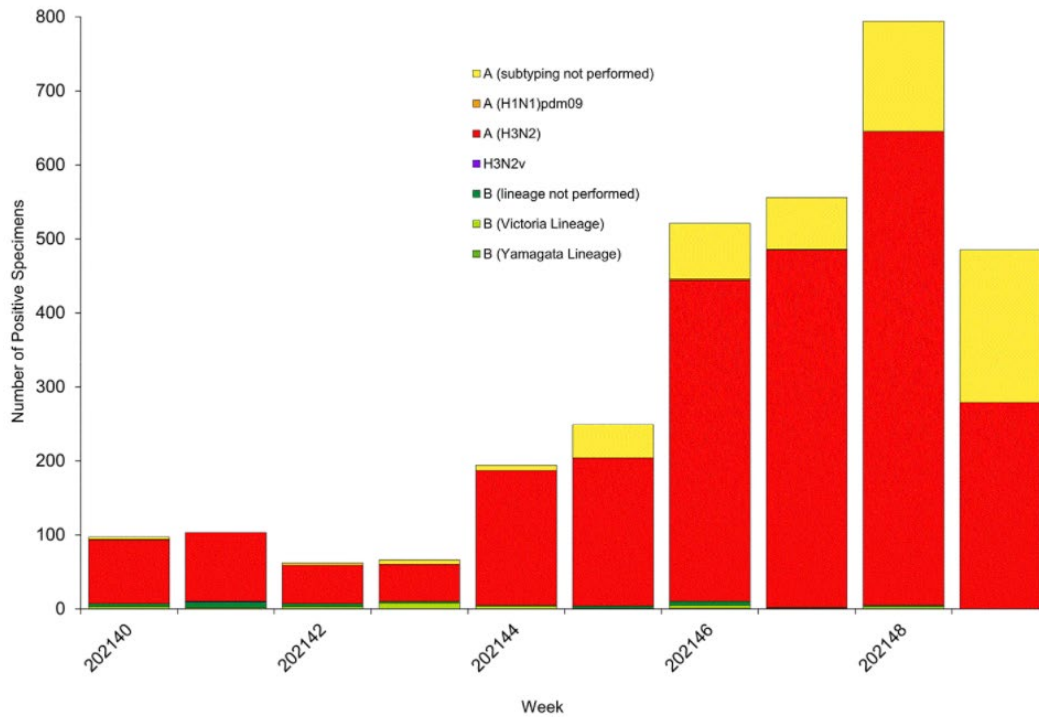


Figure 5. Influenza Positive Tests Reported to CDC by U.S. Clinical Laboratories, National Summary, October 23, 2021 – December 11, 2021

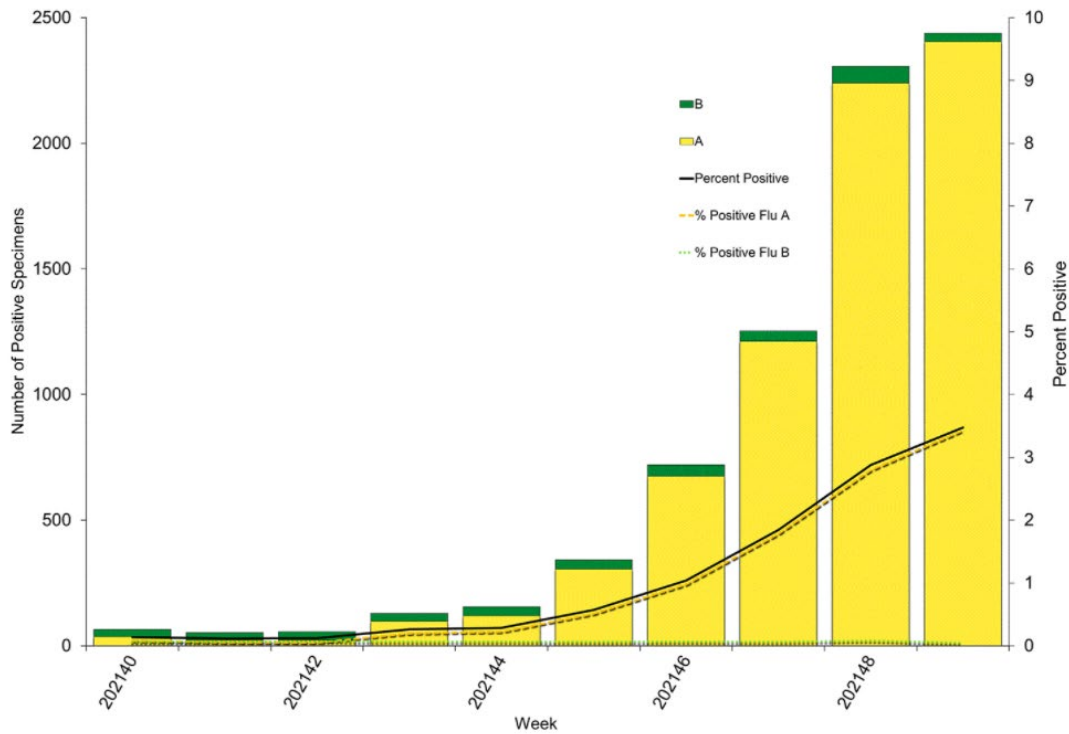


Figure 6. 2021-2022 Influenza Vaccine Composition, Northern Hemisphere:

Egg-based vaccine composition recommendations:

- an A/Victoria/2570/2019 (H1N1) pdm09-like virus;
- an A/Cambodia/e0826360/2020 (H3N2)-like virus;
- a B/Washington/02/2019- like virus (B/Victoria lineage);
- a B/Phuket/3073/2013-like virus (B/Yamagata lineage).

Cell- or recombinant-based vaccine composition recommendations:

- an A/Wisconsin/588/2019 (H1N1) pdm09-like virus;
- an A/Cambodia/e0826360/2020 (H3N2)-like virus;
- a B/Washington/02/2019- like virus (B/Victoria lineage);
- a B/Phuket/3073/2013-like virus (B/Yamagata lineage).

Figure 7. U.S. Virologic Surveillance, Week 49

	Week 49	Data Cumulative since October 3, 2021 (Week 40)
No. of specimens tested	70,157	588,384
No. of positive specimens (%)	2,438 (3.5%)	7,516 (1.3%)
<i>Positive specimens by type</i>		
Influenza A	2,405 (98.6%)	7,138 (95.0%)
Influenza B	33 (1.4%)	378 (5.0%)

Figure 8. ESSENCE Syndromic Surveillance for Influenza-like Illness: Denton County, August 01, 2021- December 11, 2021

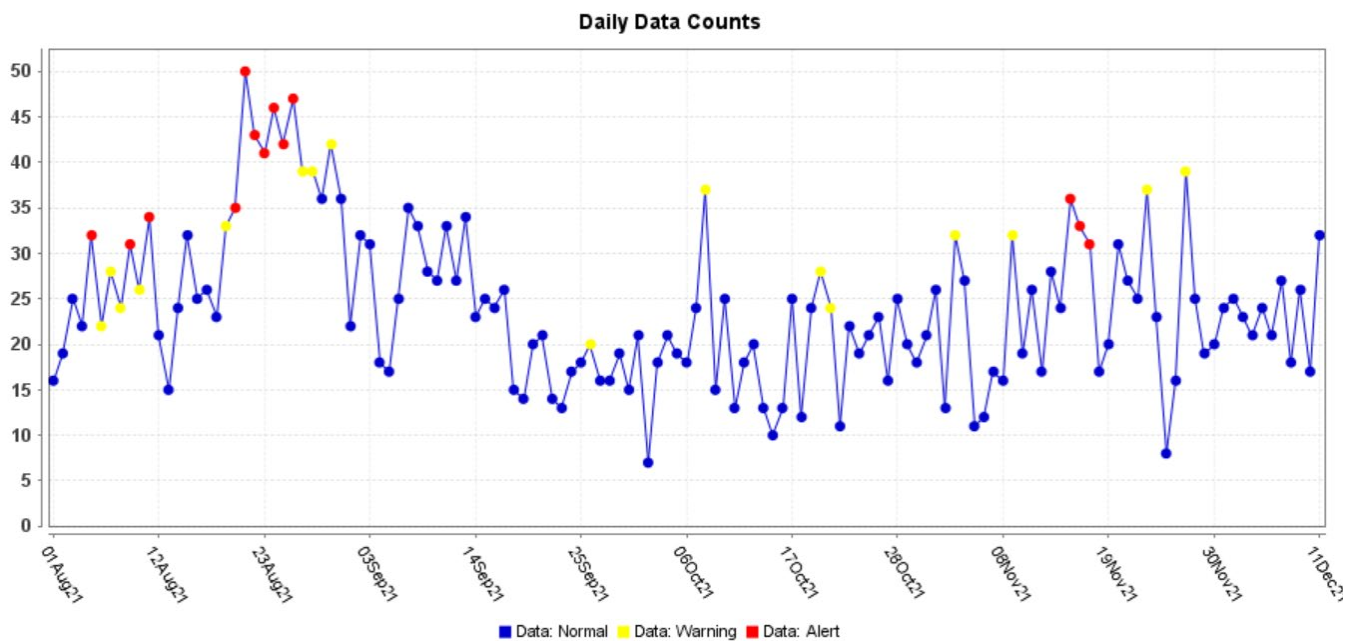


Figure 9. ESSENCE Syndromic Surveillance for Influenza-like Illness: Denton County, October 01, 2020 – December 11, 2021

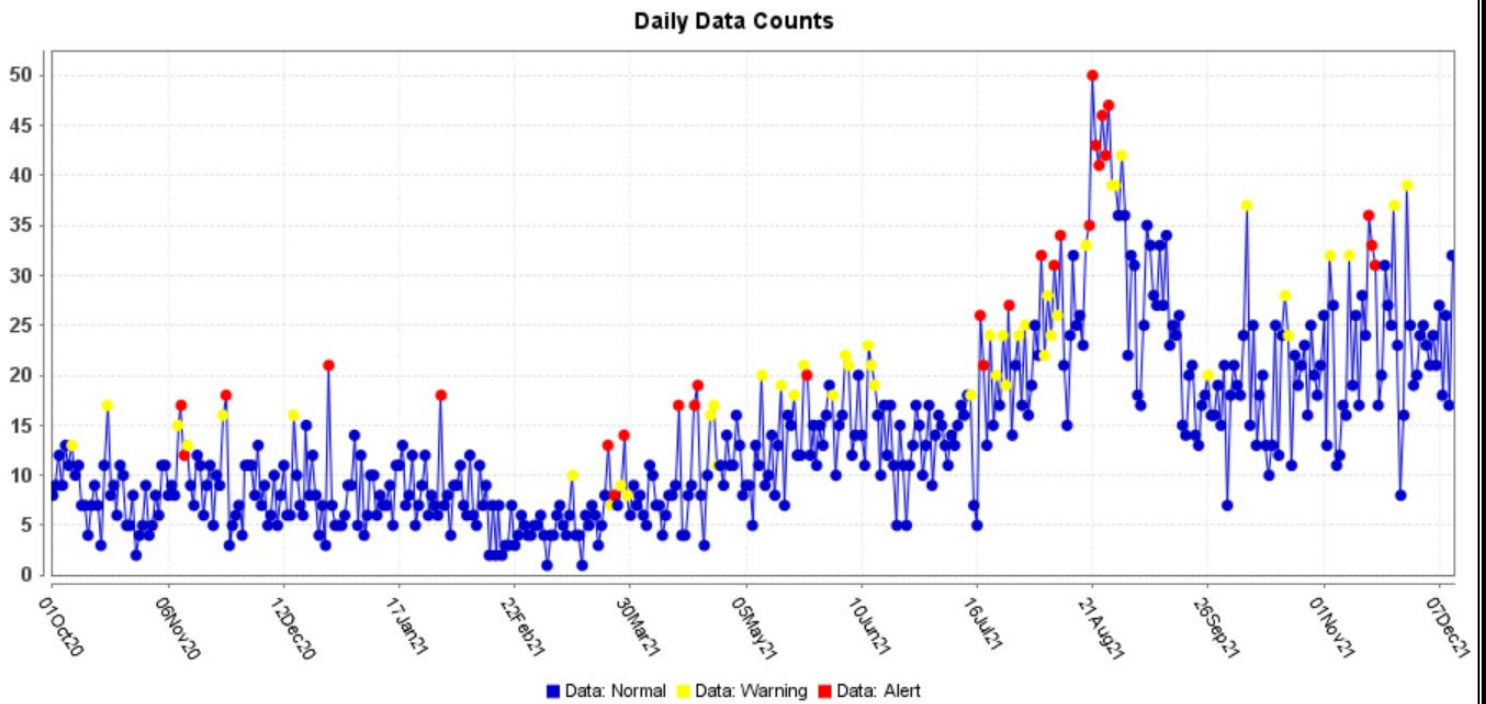


Figure 10. Pneumonia and Influenza Mortality from the National Center for Health Statistics Mortality Surveillance System: Data as of December 16, 2021

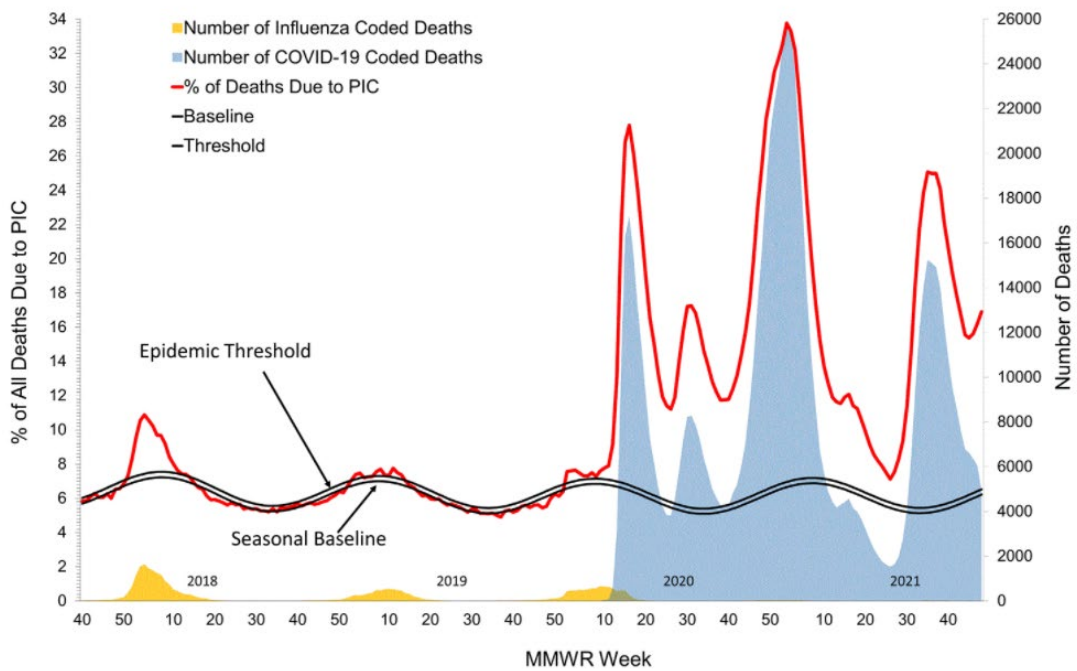
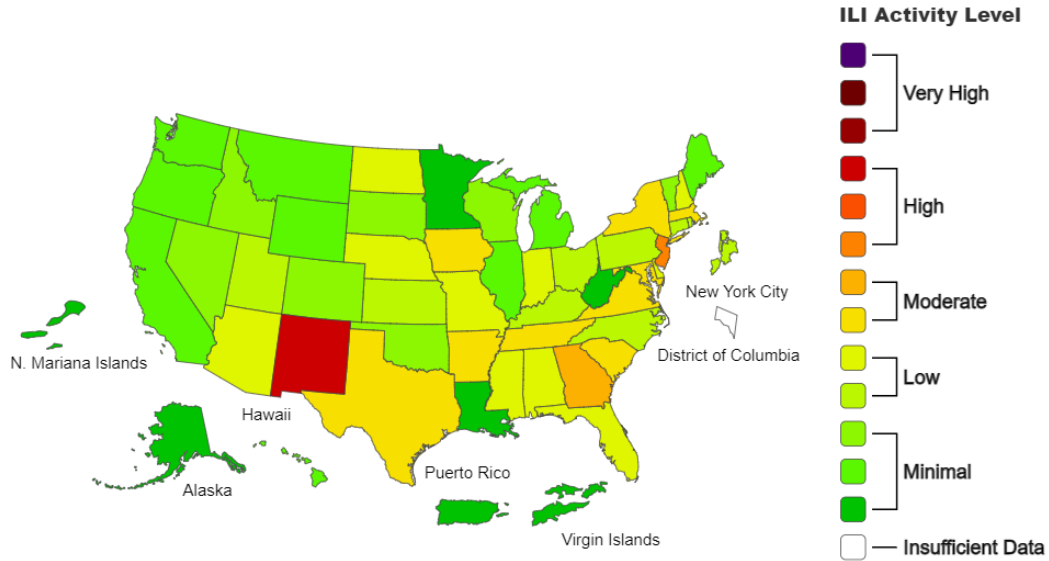
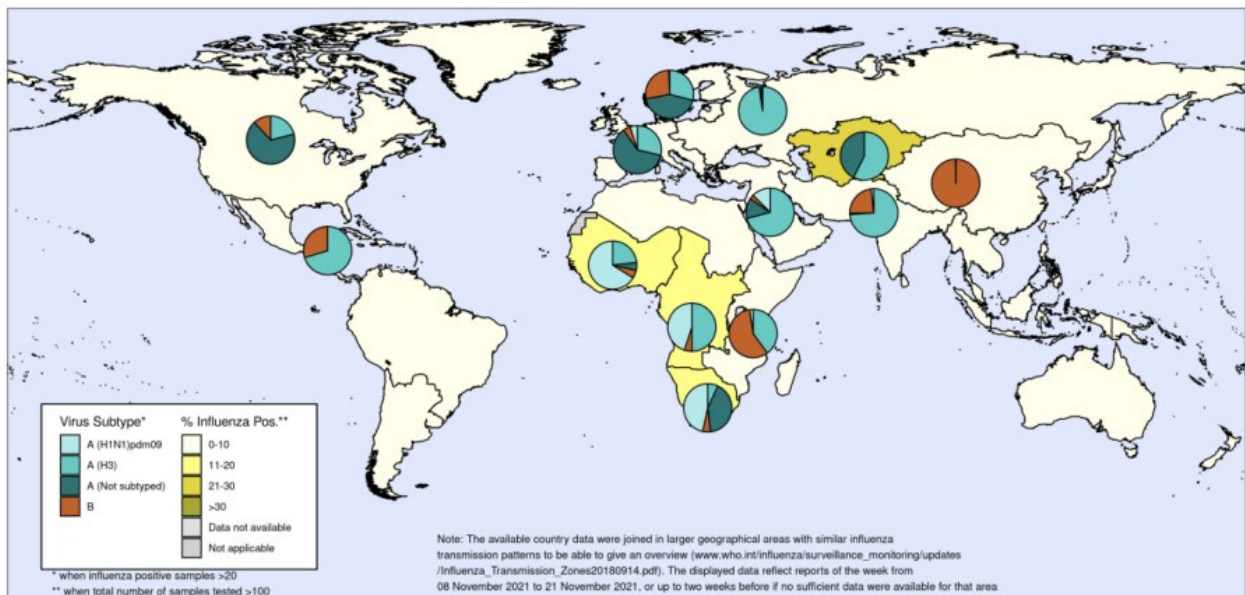


Figure 11. 2021-22 Influenza Season Week 49 ending December 11, 2021



Source: <https://www.cdc.gov/flu/weekly/index.htm>

Figure 12. Percentage of Respiratory Specimens that tested Positive for Influenza: WHO, Map generated on December 03, 2021



The boundaries and names shown and the designations used on this map do not imply the expression of any opinion whatsoever on the part of the World Health Organization concerning the legal status of any country, territory, city or area or of its authorities, or concerning the delimitation of its frontiers or boundaries. Dotted and dashed lines on maps represent approximate border lines for which there may not yet be full agreement.



Data source: Global Influenza Surveillance and Response System (GISRS), FluNet (www.who.int/flu-net)
Copyright WHO 2021. All rights reserved.



Please direct inquiries to Denton County Public Health at
epidemiology@dentoncounty.com or 940-349-2909