

# Denton County Public Health

## 2021 – 2022 Influenza Surveillance Program

### CDC Week 46, Week Ending November 20, 2021



## Epidemiologic Overview

### Denton County

- Low influenza activity was reported in Denton County for week 46.
- 6 positive influenza tests (2 Flu A and 4 Flu B) and 1 hospitalization was reported by Denton County sentinel providers for week 46.
- Syndromic surveillance for influenza-like illness (ILI) in Denton County increased for week 46 when compared to the previous week.
- 0 influenza-associated deaths have been reported in Denton County for the 2021-2022 season.

### Texas

- Influenza activity in the state of Texas was low for week 46.
- The percentage of visits for ILI as reported by ILINet providers increased to 3.22% in week 46 compared to the previous week.
- The percentage of specimens testing positive for influenza by hospital laboratories in Texas decreased to 0.49% in week 46 compared to the previous week.

### US

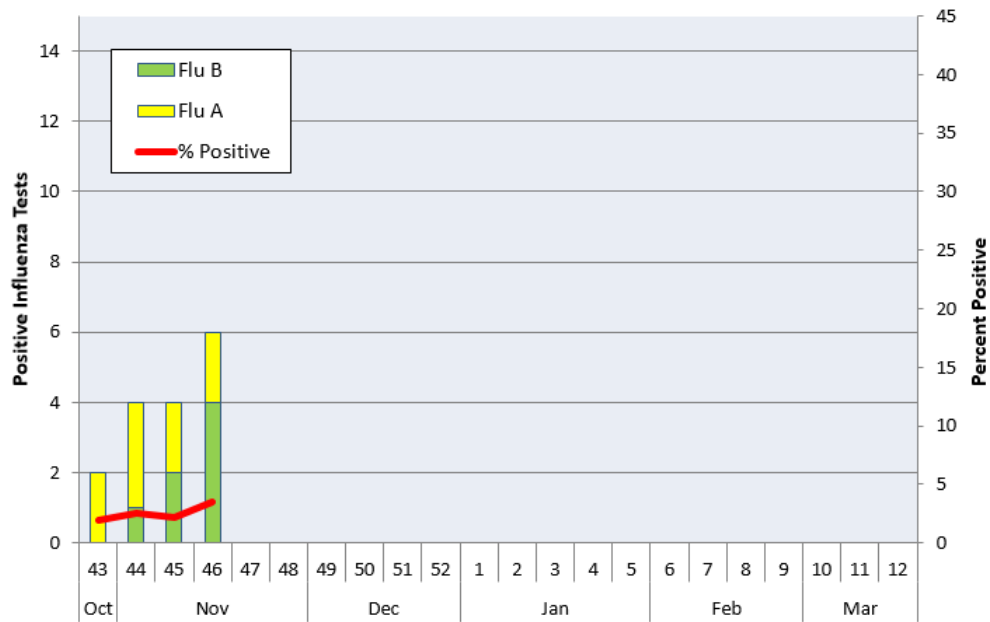
- Seasonal influenza activity in the United States remains low.
- The proportion of outpatient visits for influenza-like illness (ILI) was 2.2%, which is below the national baseline of 2.5%.
- The percentage of specimens testing positive in clinical labs for influenza in the US was 1.0% for Week 46.
- The proportion of deaths attributed to pneumonia, influenza, or COVID-19 (PIC) from the National Center for Health Statistics Mortality Surveillance System for week 46 was 14.5%. This percentage is above the epidemic threshold of 6.3% for week 46.

**Figure 1. Influenza Surveillance Summary: Denton County Hospitals and Providers**

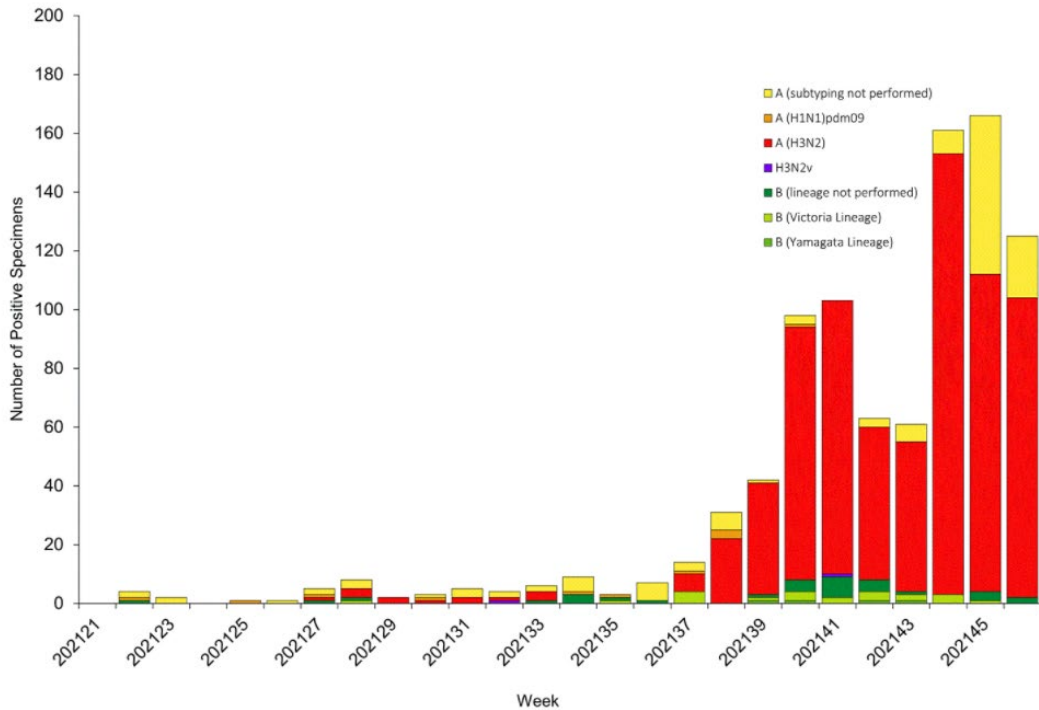
Week Ending	10/30/21	11/06/21	11/13/21	11/20/21	10/30/21 - Present
<b>CDC Week</b>	43	44	45	46	
<b>Influenza Tests Performed Weekly</b>	102	157	187	171	617
<b>Total Positive Influenza Tests</b>	2	4	4	6	16
<b>Percent Positive Influenza Tests*</b>	2.0%	2.5%	2.1%	3.5%	
<b>Positive A Influenza</b>	2	3	2	2	9
<b>Positive B Influenza</b>	0	1	2	4	7
<b>Non-differentiated Influenza</b>	0	0	0	0	0
<b>Influenza Hospitalizations</b>	0	1	1	1	3
<b>Influenza-associated Pediatric Deaths</b>	0	0	0	0	0
<b>Influenza-associated Adult Deaths</b>	0	0	0	0	0

\* Percent positive tests only includes positive tests from providers reporting number of tests performed weekly

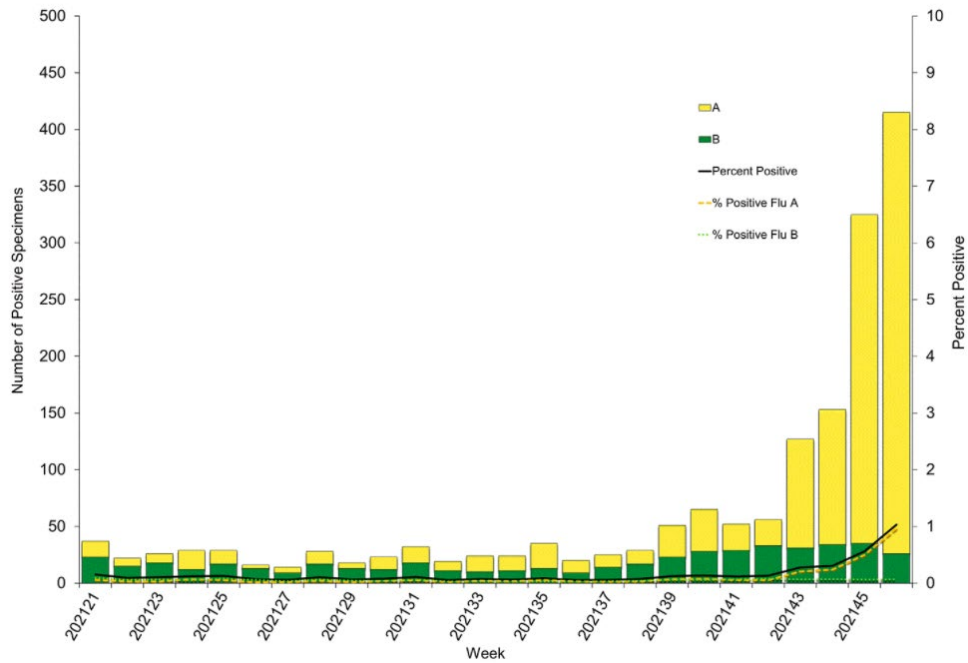
**Figure 2. Influenza Positive Tests and Percent Positive, Denton County Hospitals and Providers, 2021-2022 Season**



**Figure 3. Influenza Positive Tests Reported to CDC by U.S. Public Health Laboratories, National Summary, May 23, 2021- November 20, 2021**



**Figure 4. Influenza Positive Tests Reported to CDC by U.S. Clinical Laboratories, National Summary, May 23, 2021 – November 20, 2021**



**Figure 5. 2021-2022 Influenza Vaccine Composition, Northern Hemisphere:**

Egg-based vaccine composition recommendations:

- an A/Victoria/2570/2019 (H1N1) pdm09-like virus;
- an A/Cambodia/e0826360/2020 (H3N2)-like virus;
- a B/Washington/02/2019- like virus (B/Victoria lineage);
- a B/Phuket/3073/2013-like virus (B/Yamagata lineage).

Cell- or recombinant-based vaccine composition recommendations:

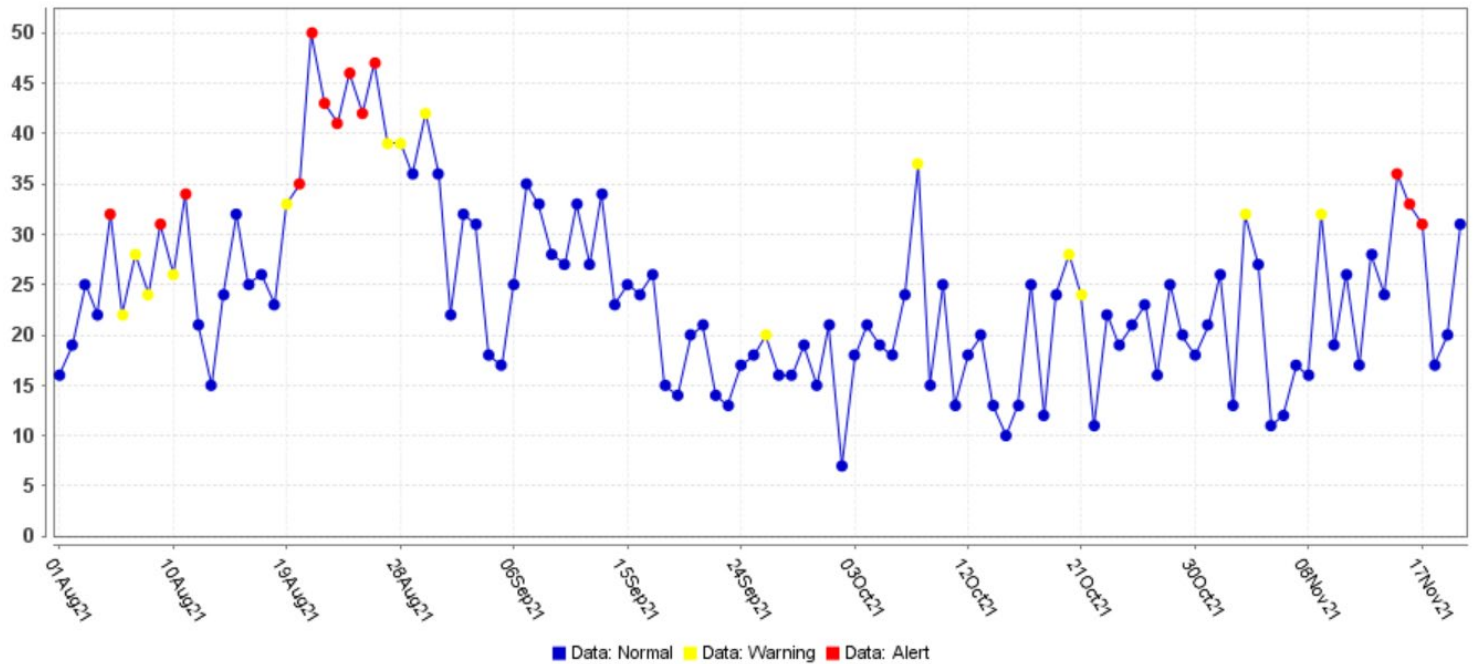
- an A/Wisconsin/588/2019 (H1N1) pdm09-like virus;
- an A/Cambodia/e0826360/2020 (H3N2)-like virus;
- a B/Washington/02/2019- like virus (B/Victoria lineage);
- a B/Phuket/3073/2013-like virus (B/Yamagata lineage).

**Figure 6. U.S. Virologic Surveillance, Week 46**

	Week 46	Data Cumulative since October 3, 2021 (Week 40)
No. of specimens tested	40,167	327,924
No. of positive specimens (%)	415 (1.0%)	1,193 (0.4%)
<i>Positive specimens by type</i>		
Influenza A	389 (93.7%)	977 (81.9%)
Influenza B	26 (6.3%)	216 (18.1%)

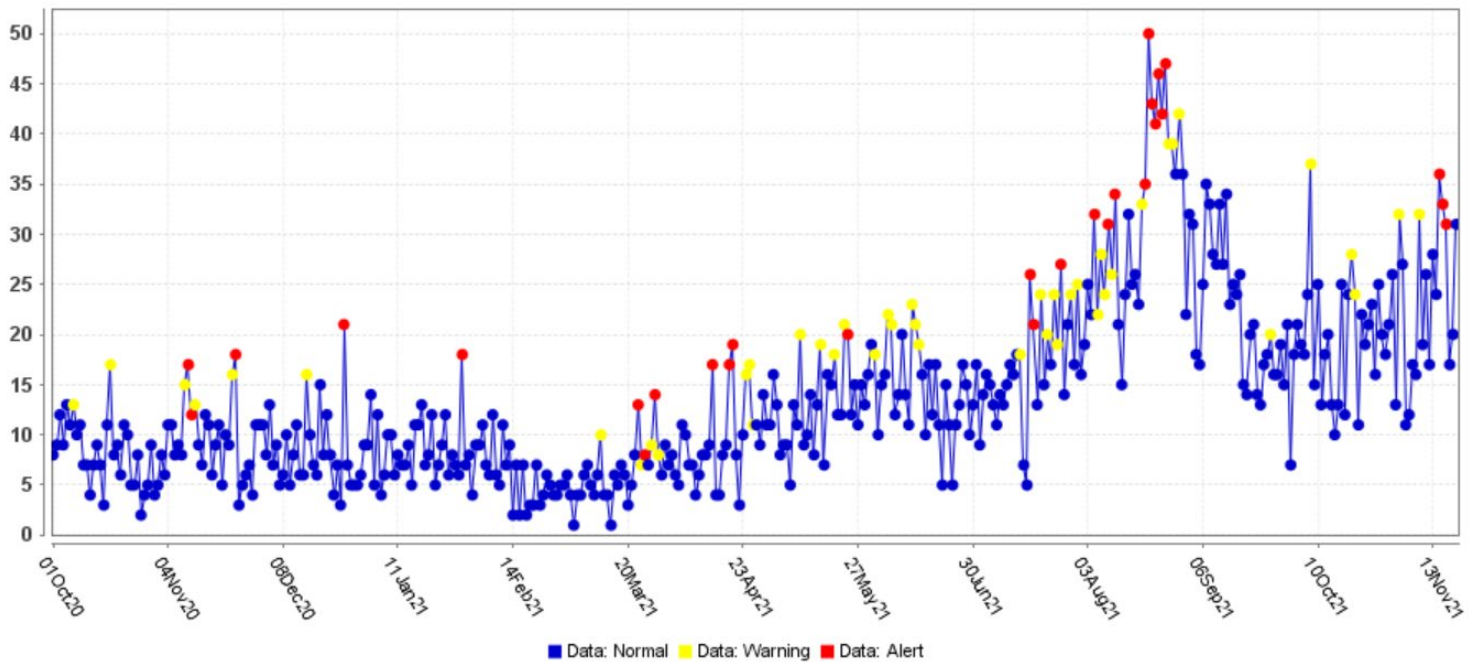
**Figure 7. ESSENCE Syndromic Surveillance for Influenza-like Illness: Denton County, August 01, 2021- November 20, 2021**

**Daily Data Counts**



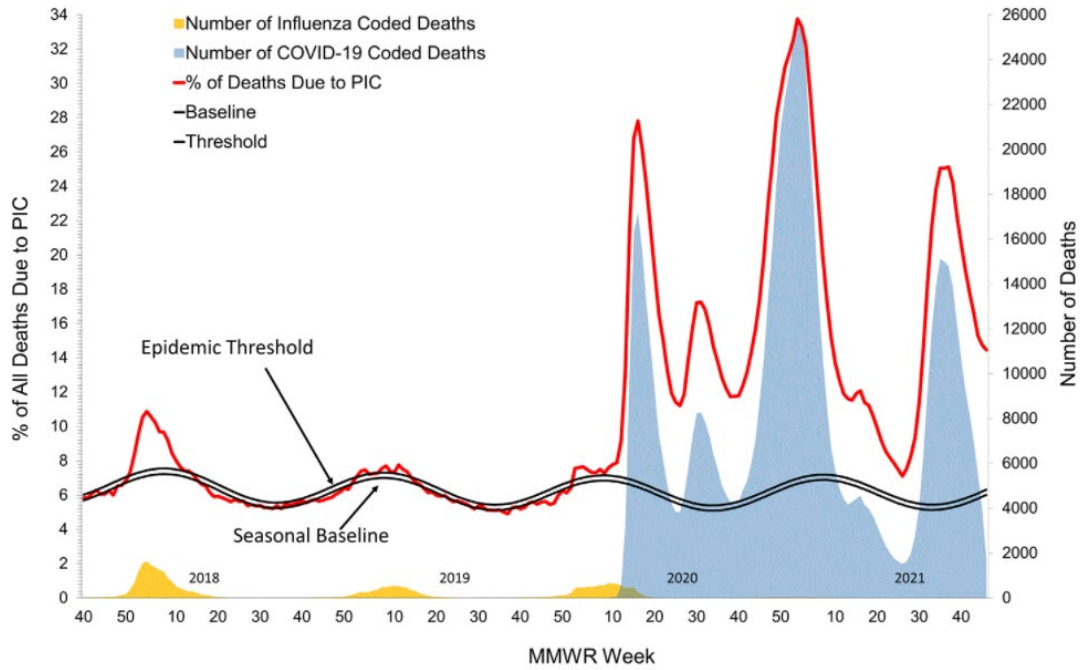
**Figure 8. ESSENCE Syndromic Surveillance for Influenza-like Illness: Denton County, October 01, 2020 – November 20, 2021**

**Daily Data Counts**



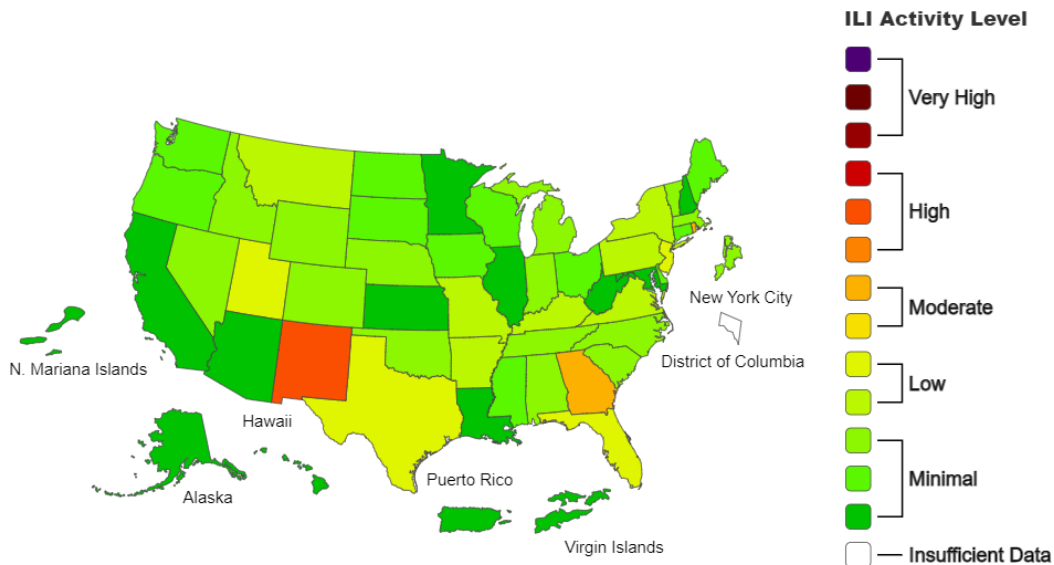
Data obtained from hospitals participating in the Electronic Surveillance System for the Early Notification of Community-based Epidemics (ESSENCE) from October 2020 through the present. Depicted are the numbers of persons presenting to Emergency Departments according to patient location (Denton region) with self-reported chief complaints of influenza-like illness.

**Figure 9. Pneumonia and Influenza Mortality from the National Center for Health Statistics Mortality Surveillance System: Data as of November 24, 2021**



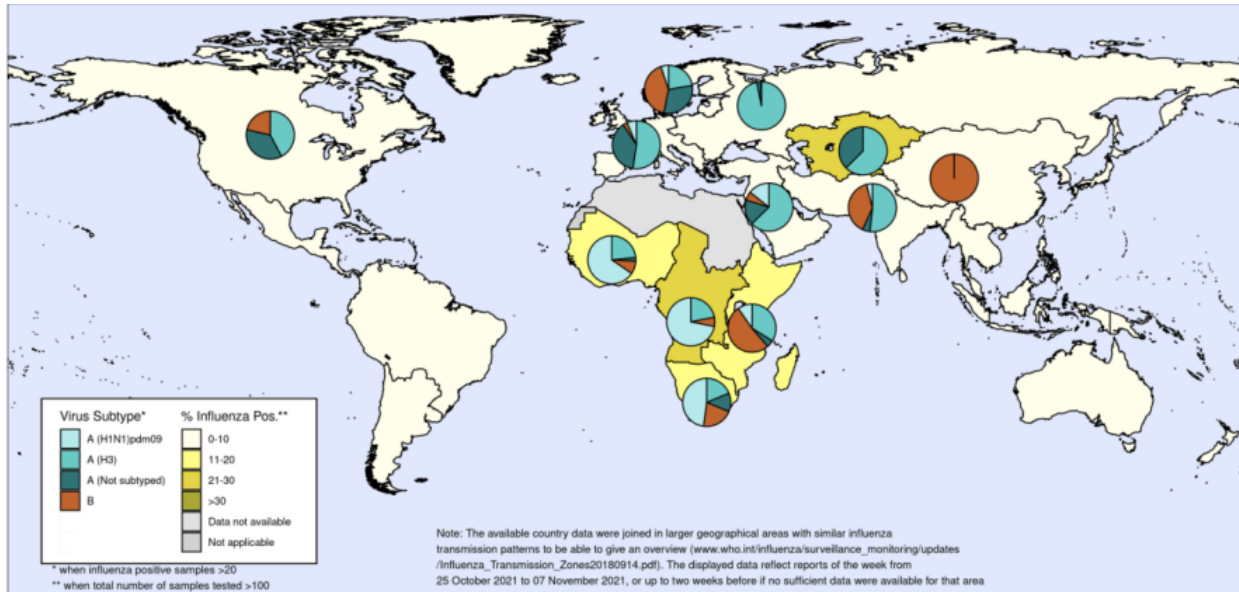
Source: <https://www.cdc.gov/flu/weekly/index.htm>

**Figure 10. 2021-22 Influenza Season Week 46 ending Nov 20, 2021**



Source: <https://www.cdc.gov/flu/weekly/index.htm>

**Figure 11. Percentage of Respiratory Specimens that tested Positive for Influenza: WHO, Map generated on November 19, 2021**



The boundaries and names shown and the designations used on this map do not imply the expression of any opinion whatsoever on the part of the World Health Organization concerning the legal status of any country, territory, city or area or of its authorities, or concerning the delimitation of its frontiers or boundaries. Dotted and dashed lines on maps represent approximate border lines for which there may not yet be full agreement.



Data source: Global Influenza Surveillance and Response System (GISRS), FluNet (www.who.int/flu-net)  
 Copyright WHO 2021. All rights reserved.



Please direct inquiries to Denton County Public Health at [epidemiology@dentoncounty.com](mailto:epidemiology@dentoncounty.com) or 940-349-2909