

Denton County Public Health

2021 – 2022 Influenza Surveillance Program

CDC Week 45, Week Ending November 13, 2021



Epidemiologic Overview

Denton County

- Low influenza activity was reported in Denton County for week 45.
- 4 positive influenza tests (2 Flu A and 2 Flu B) and 1 hospitalization was reported by Denton County sentinel providers for week 45.
- Syndromic surveillance for influenza-like illness (ILI) in Denton County slightly increased for week 45 when compared to the previous week.
- 0 influenza-associated deaths have been reported in Denton County for the 2021-2022 season.

Texas

- Influenza activity in the state of Texas was low for week 45.
- The percentage of visits for ILI as reported by ILINet providers increased to 2.65% in week 45 compared to the previous week.
- The percentage of specimens testing positive for influenza by hospital laboratories in Texas increased to 0.50% in week 45 compared to the previous week.

US

- Seasonal influenza activity in the United States remains low
- The proportion of outpatient visits for influenza-like illness (ILI) was 2.1%, which is below the national baseline of 2.5%.
- The percentage of specimens testing positive in clinical labs for influenza in the US was 0.7% for Week 45.
- The proportion of deaths attributed to pneumonia, influenza, or COVID-19 (PIC) from the National Center for Health Statistics Mortality Surveillance System for week 45 was 14.4%. This percentage is above the epidemic threshold of 6.2% for week 45.

Figure 1. Influenza Surveillance Summary: Denton County Hospitals and Providers

Week Ending	10/30/21	11/06/21	11/13/21	10/30/21 - Present
CDC Week	43	44	45	
Influenza Tests Performed Weekly	102	157	187	446
Total Positive Influenza Tests	2	4	4	10
Percent Positive Influenza Tests*	2.0%	2.5%	2.1%	
Positive A Influenza	2	3	2	7
Positive B Influenza	0	1	2	3
Non-differentiated Influenza	0	0	0	0
Influenza Hospitalizations	0	1	1	2
Influenza-associated Pediatric Deaths	0	0	0	0
Influenza-associated Adult Deaths	0	0	0	0

* Percent positive tests only includes positive tests from providers reporting number of tests performed weekly

Figure 2. Influenza Positive Tests and Percent Positive, Denton County Hospitals and Providers, 2021-2022 Season

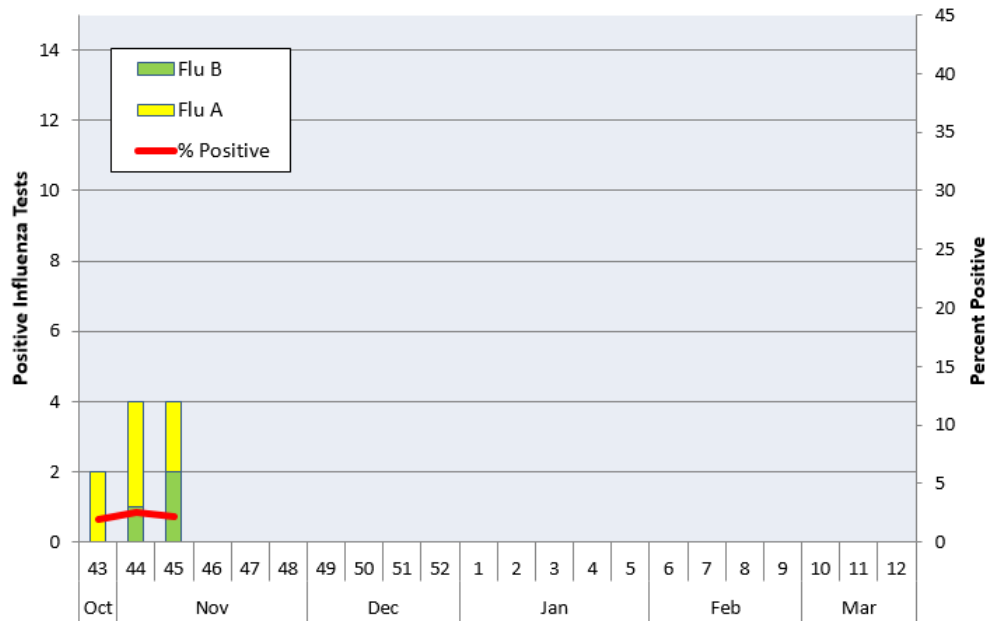


Figure 3. Influenza Positive Tests Reported to CDC by U.S. Public Health Laboratories, National Summary, May 23, 2021- November 13, 2021

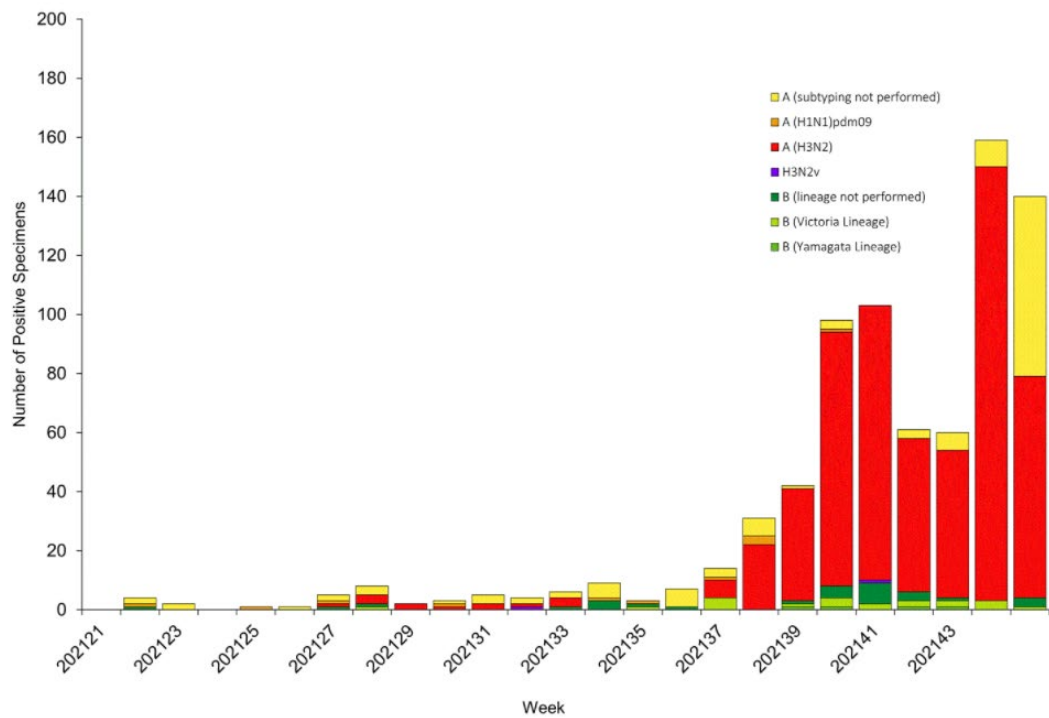


Figure 4. Influenza Positive Tests Reported to CDC by U.S. Clinical Laboratories, National Summary, May 23, 2021 – November 13, 2021

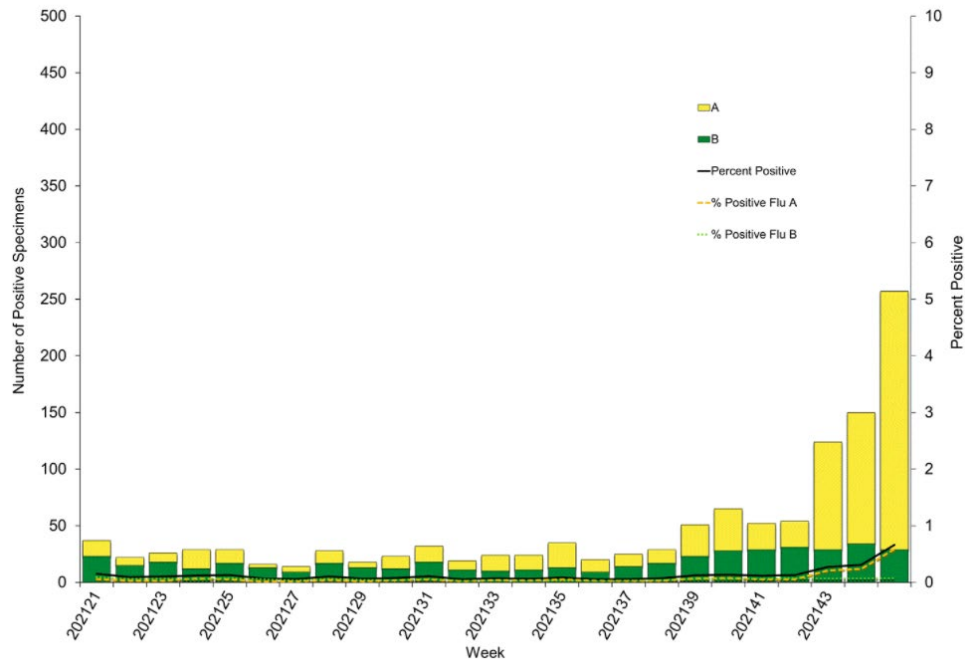


Figure 5. 2021-2022 Influenza Vaccine Composition, Northern Hemisphere:

Egg-based vaccine composition recommendations:

- an A/Victoria/2570/2019 (H1N1) pdm09-like virus;
- an A/Cambodia/e0826360/2020 (H3N2)-like virus;
- a B/Washington/02/2019- like virus (B/Victoria lineage);
- a B/Phuket/3073/2013-like virus (B/Yamagata lineage).

Cell- or recombinant-based vaccine composition recommendations:

- an A/Wisconsin/588/2019 (H1N1) pdm09-like virus;
- an A/Cambodia/e0826360/2020 (H3N2)-like virus;
- a B/Washington/02/2019- like virus (B/Victoria lineage);
- a B/Phuket/3073/2013-like virus (B/Yamagata lineage).

Figure 6. U.S. Virologic Surveillance, Week 45

	Week 45	Data Cumulative since October 3, 2021 (Week 40)
No. of specimens tested	38,685	265,492
No. of positive specimens (%)	257 (0.7%)	702 (0.3%)
<i>Positive specimens by type</i>		
Influenza A	228 (88.7%)	522 (74.4%)
Influenza B	29 (11.3%)	180 (25.6%)

Figure 7. ESSENCE Syndromic Surveillance for Influenza-like Illness: Denton County, August 01, 2021- November 13, 2021

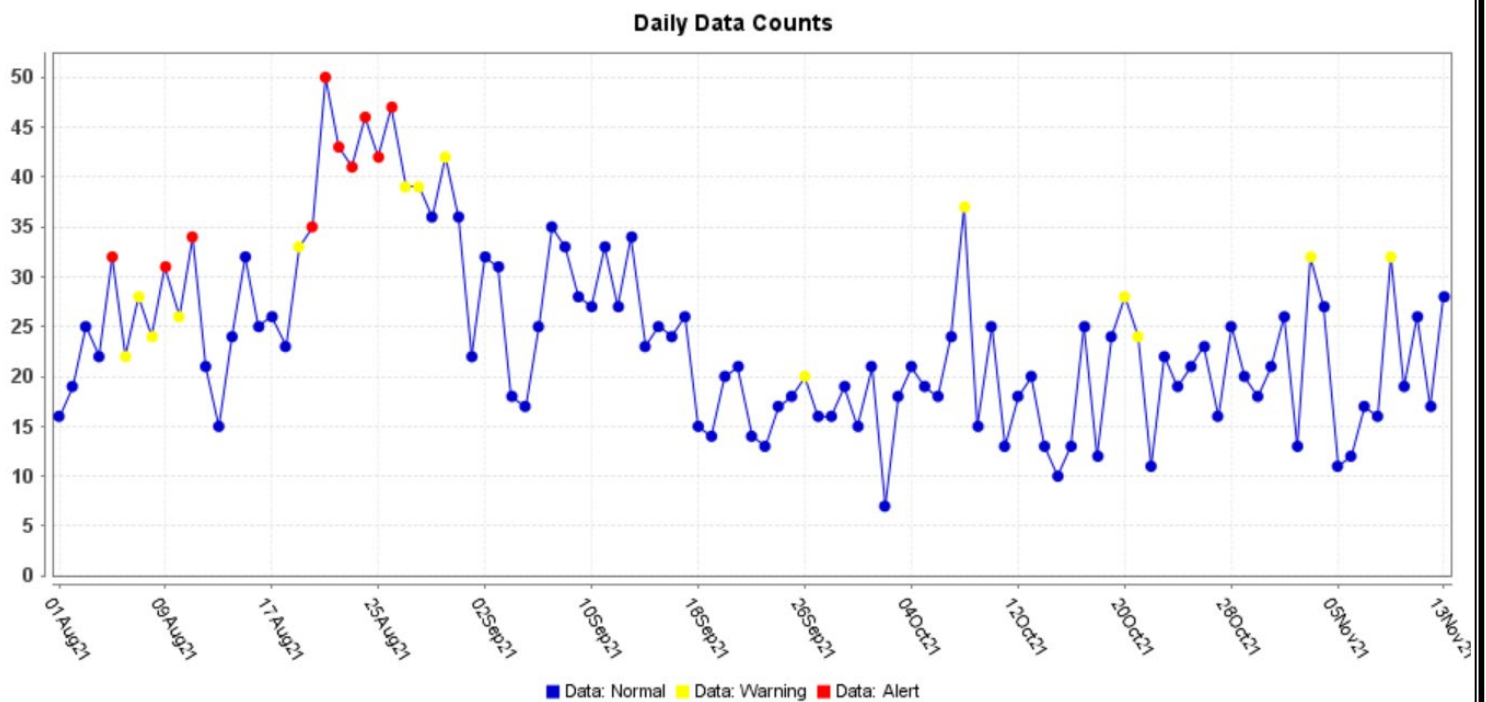
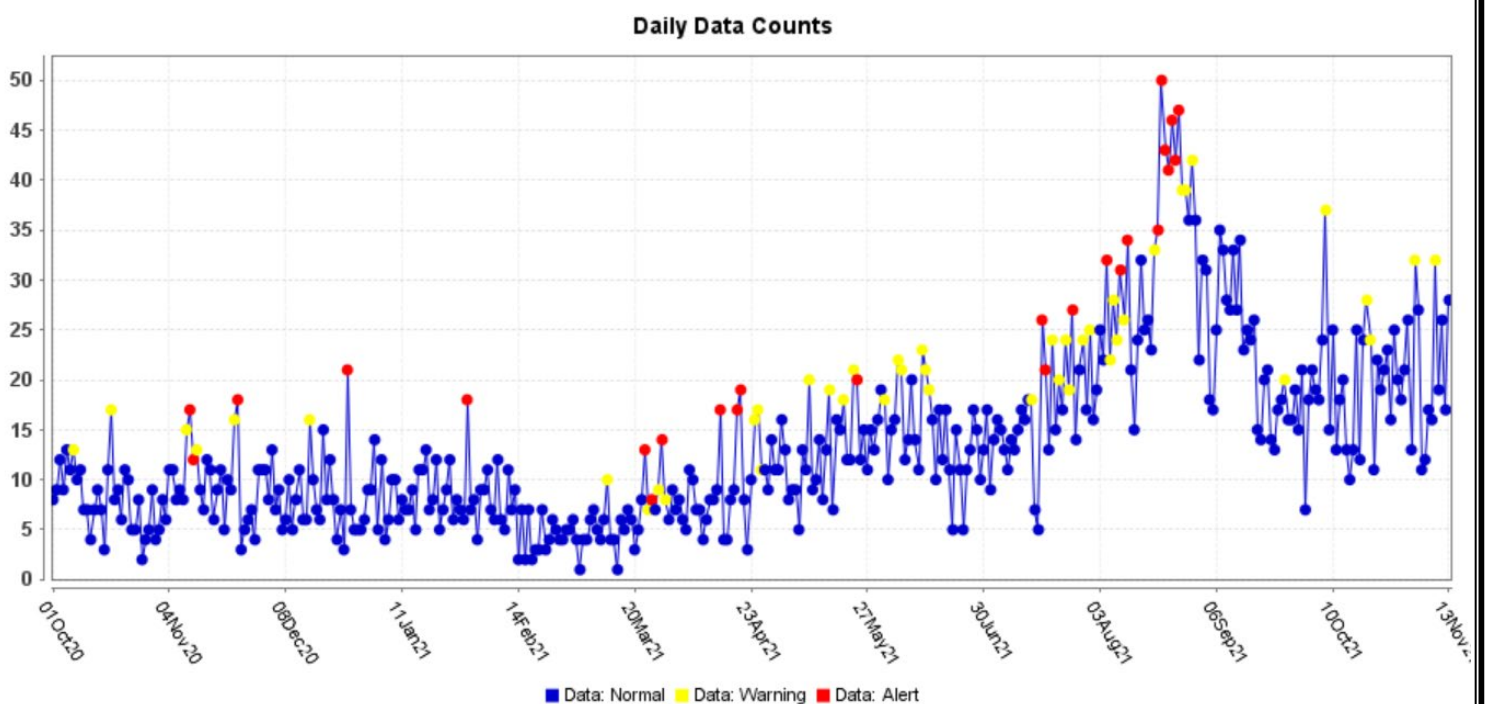
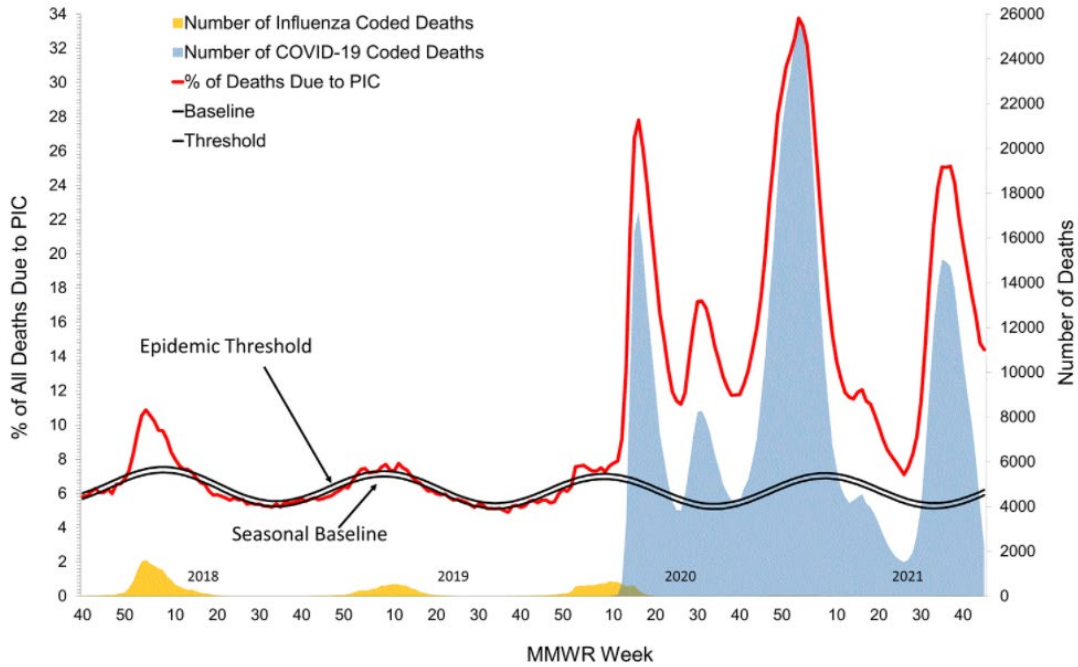


Figure 8. ESSENCE Syndromic Surveillance for Influenza-like Illness: Denton County, October 01, 2020 – November 13, 2021



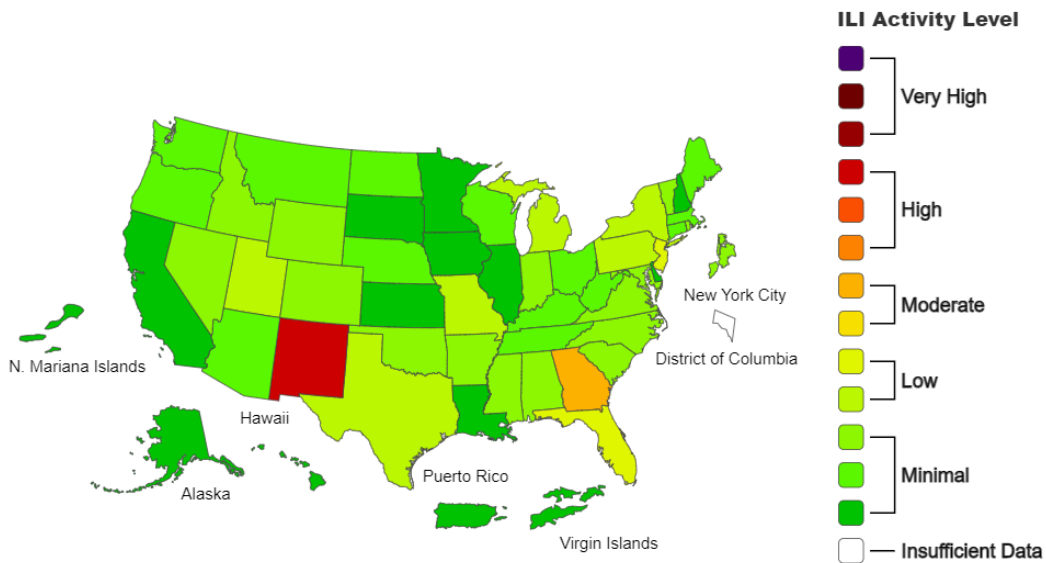
Data obtained from hospitals participating in the Electronic Surveillance System for the Early Notification of Community-based Epidemics (ESSENCE) from October 2020 through the present. Depicted are the numbers of persons presenting to Emergency Departments according to patient location (Denton region) with self-reported chief complaints of influenza-like illness.

Figure 9. Pneumonia and Influenza Mortality from the National Center for Health Statistics Mortality Surveillance System: Data as of November 18, 2021



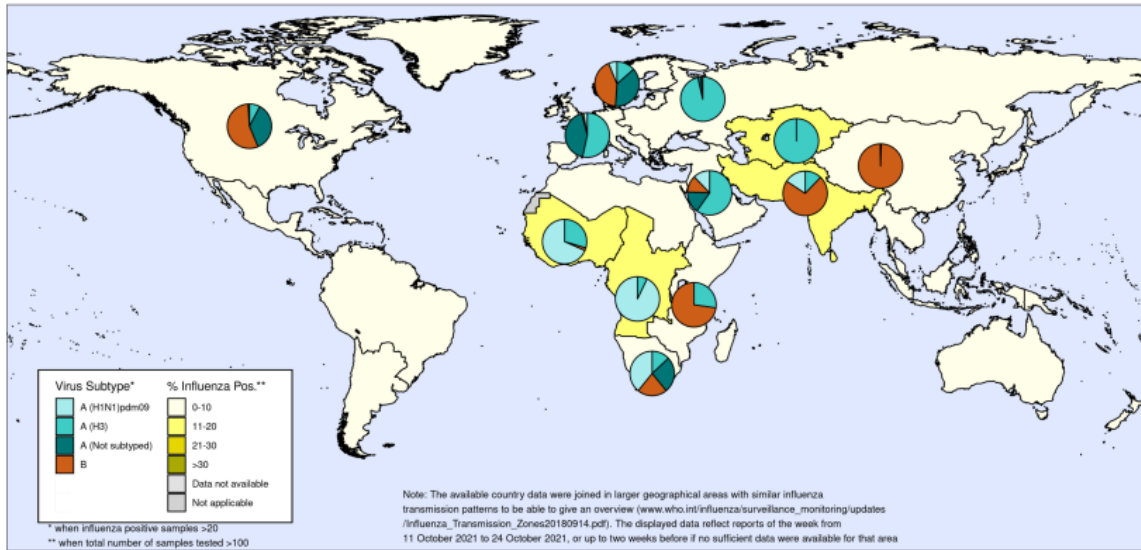
Source: <https://www.cdc.gov/flu/weekly/index.htm>

Figure 10. 2021-22 Influenza Season Week 45 ending Nov 13, 2021



Source: <https://www.cdc.gov/flu/weekly/index.htm>

Figure 11. Percentage of Respiratory Specimens that tested Positive for Influenza: WHO, Map generated on November 05, 2021



Please direct inquiries to Denton County Public Health at epidemiology@dentoncounty.com or 940-349-2909