

# Denton County Public Health

## 2021 – 2022 Influenza Surveillance Program

### CDC Week 44, Week Ending November 06, 2021



## Epidemiologic Overview

### Denton County

- Low influenza activity was reported in Denton County for week 44.
- 4 positive influenza tests (3 Flu A and 1 Flu B) and 1 hospitalization was reported by Denton County sentinel providers for week 44.
- Syndromic surveillance for influenza-like illness (ILI) in Denton County remained unchanged for week 44 when compared to the previous week.
- 0 influenza-associated deaths have been reported in Denton County for the 2021-2022 season.

### Texas

- Influenza activity in the state of Texas was minimal for week 44.
- The percentage of visits for ILI as reported by ILINet providers increased to 2.45% in week 44 compared to the previous week.
- The percentage of specimens testing positive for influenza by hospital laboratories in Texas decreased to 0.11% in week 44 compared to the previous week.

### US

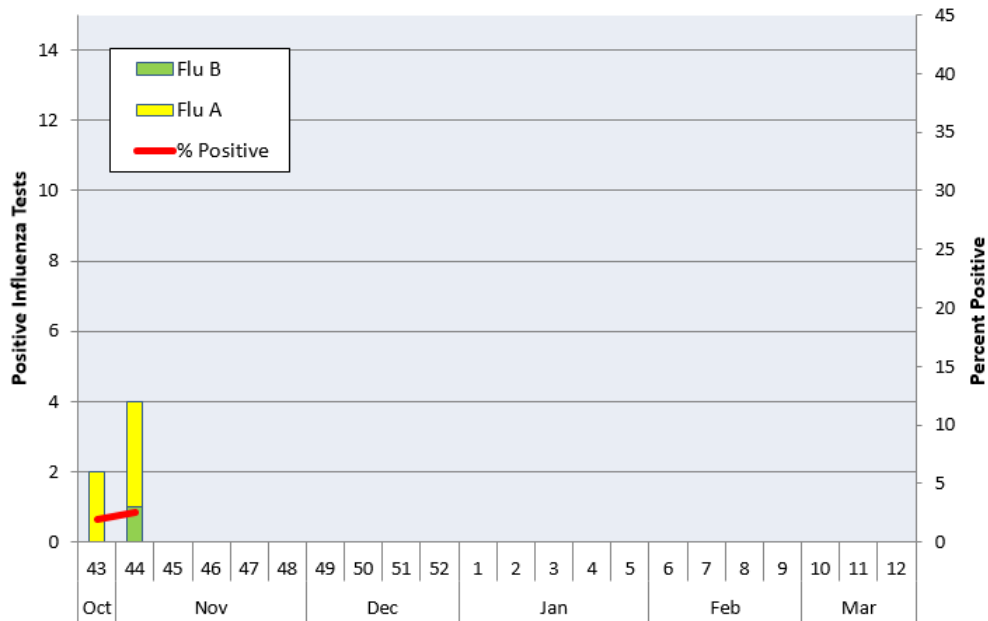
- Seasonal influenza activity in the United States remains low
- The proportion of outpatient visits for influenza-like illness (ILI) was 2.1%, which is below the national baseline of 2.5%.
- The percentage of specimens testing positive in clinical labs for influenza in the US was 0.3% for Week 44.
- The proportion of deaths attributed to pneumonia, influenza, or COVID-19 (PIC) from the National Center for Health Statistics Mortality Surveillance System for week 44 was 14.1%. This percentage is above the epidemic threshold of 6.1% for week 44.

**Figure 1. Influenza Surveillance Summary: Denton County Hospitals and Providers**

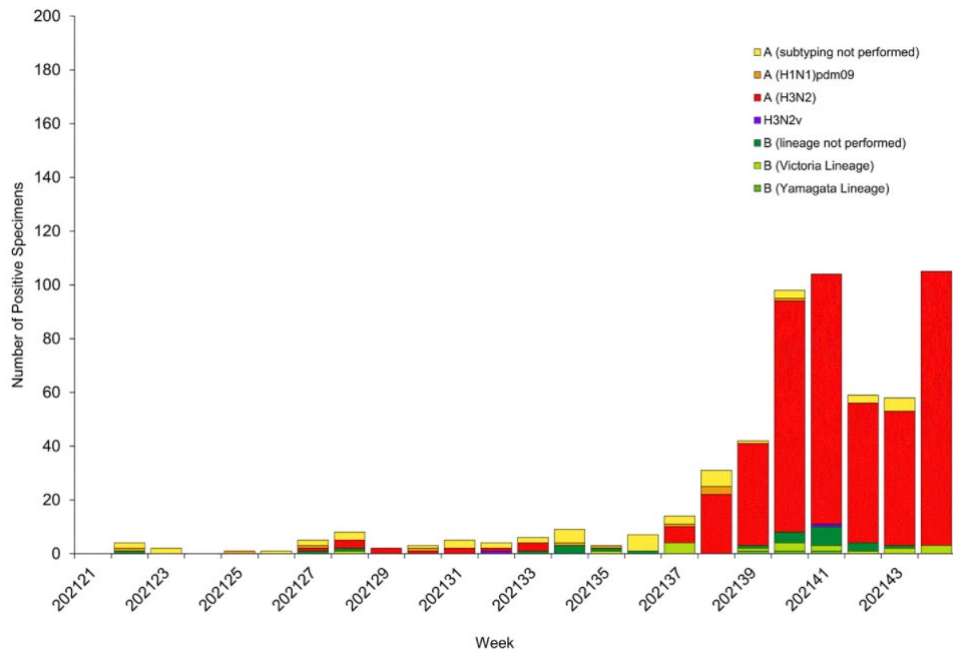
Week Ending	10/30/21	11/06/21	10/30/21 - Present
<b>CDC Week</b>	43	44	
<b>Influenza Tests Performed Weekly</b>	102	157	259
<b>Total Positive Influenza Tests</b>	2	4	6
<b>Percent Positive Influenza Tests*</b>	2.0%	2.5%	
<b>Positive A Influenza</b>	2	3	5
<b>Positive B Influenza</b>	0	1	1
<b>Non-differentiated Influenza</b>	0	0	0
<b>Influenza Hospitalizations</b>	0	1	1
<b>Influenza-associated Pediatric Deaths</b>	0	0	0
<b>Influenza-associated Adult Deaths</b>	0	0	0

\* Percent positive tests only includes positive tests from providers reporting number of tests performed weekly

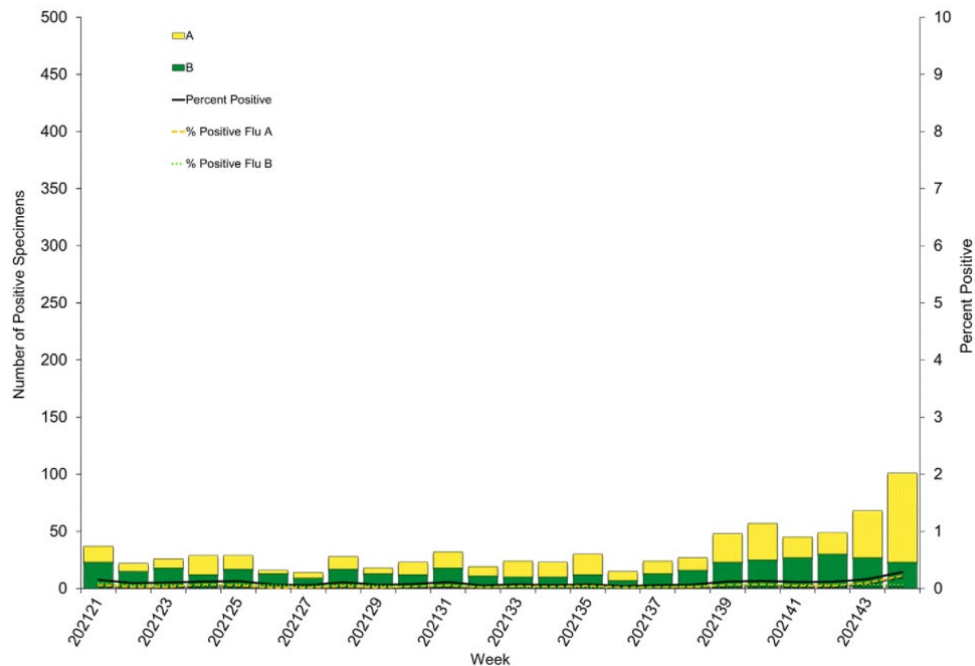
**Figure 2. Influenza Positive Tests and Percent Positive, Denton County Hospitals and Providers, 2021-2022 Season**



**Figure 3. Influenza Positive Tests Reported to CDC by U.S. Public Health Laboratories, National Summary, May 23, 2021- November 06, 2021**



**Figure 4. Influenza Positive Tests Reported to CDC by U.S. Clinical Laboratories, National Summary, May 23, 2021 – November 06, 2021**



**Figure 5. 2021-2022 Influenza Vaccine Composition, Northern Hemisphere:**

Egg-based vaccine composition recommendations:

- an A/Victoria/2570/2019 (H1N1) pdm09-like virus;
- an A/Cambodia/e0826360/2020 (H3N2)-like virus;
- a B/Washington/02/2019- like virus (B/Victoria lineage);
- a B/Phuket/3073/2013-like virus (B/Yamagata lineage).

Cell- or recombinant-based vaccine composition recommendations:

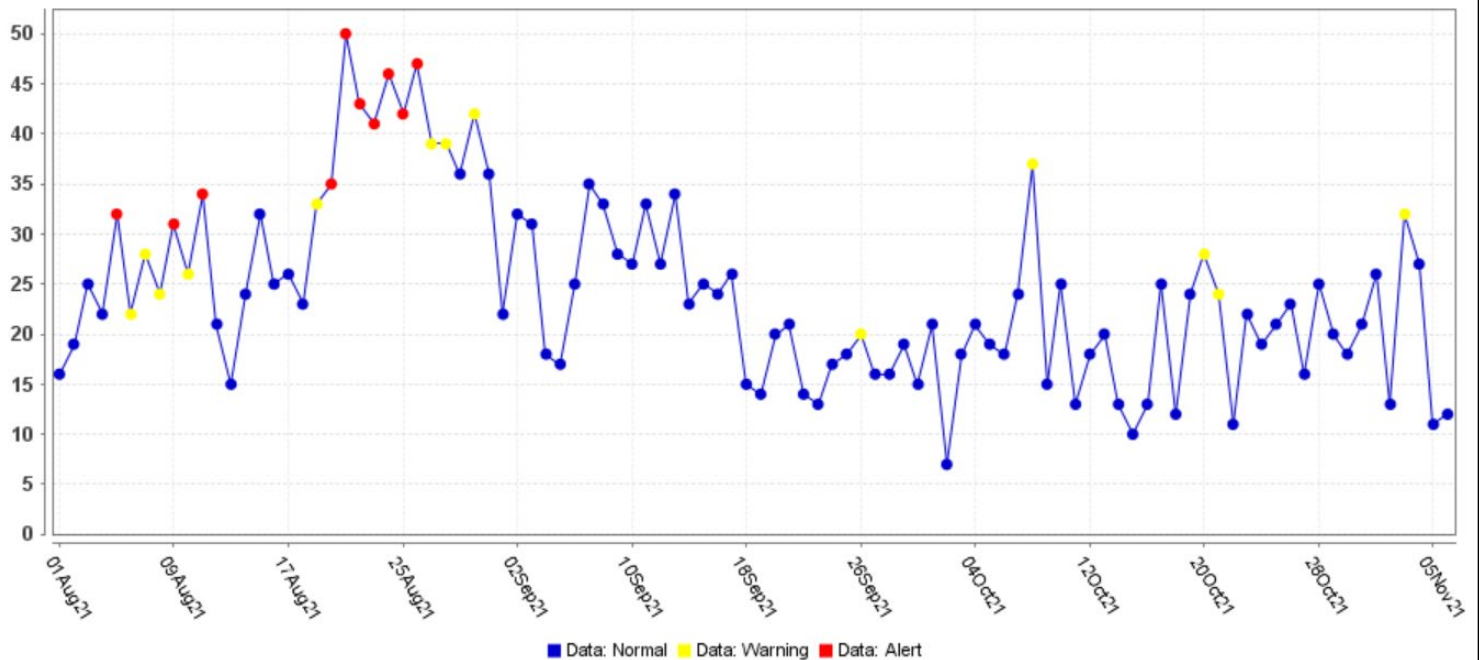
- an A/Wisconsin/588/2019 (H1N1) pdm09-like virus;
- an A/Cambodia/e0826360/2020 (H3N2)-like virus;
- a B/Washington/02/2019- like virus (B/Victoria lineage);
- a B/Phuket/3073/2013-like virus (B/Yamagata lineage).

**Figure 6. U.S. Virologic Surveillance, Week 44**

	Week 44	Data Cumulative since October 3, 2021 (Week 40)
No. of specimens tested	34,828	201,409
No. of positive specimens (%)	101 (0.3%)	320 (0.2%)
<i>Positive specimens by type</i>		
Influenza A	78 (77.2%)	188 (58.8%)
Influenza B	23 (22.8%)	132 (41.3%)

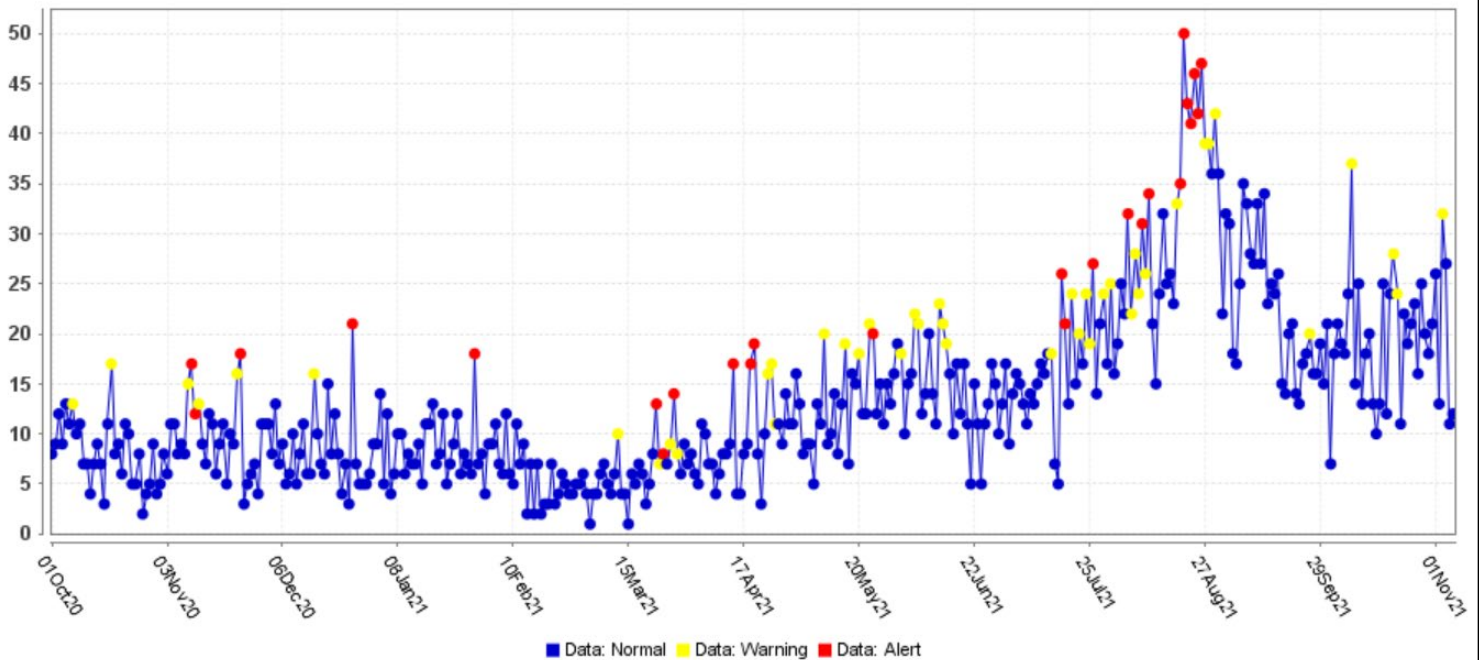
**Figure 7. ESSENCE Syndromic Surveillance for Influenza-like Illness: Denton County, August 01, 2021- November 06, 2021**

**Daily Data Counts**



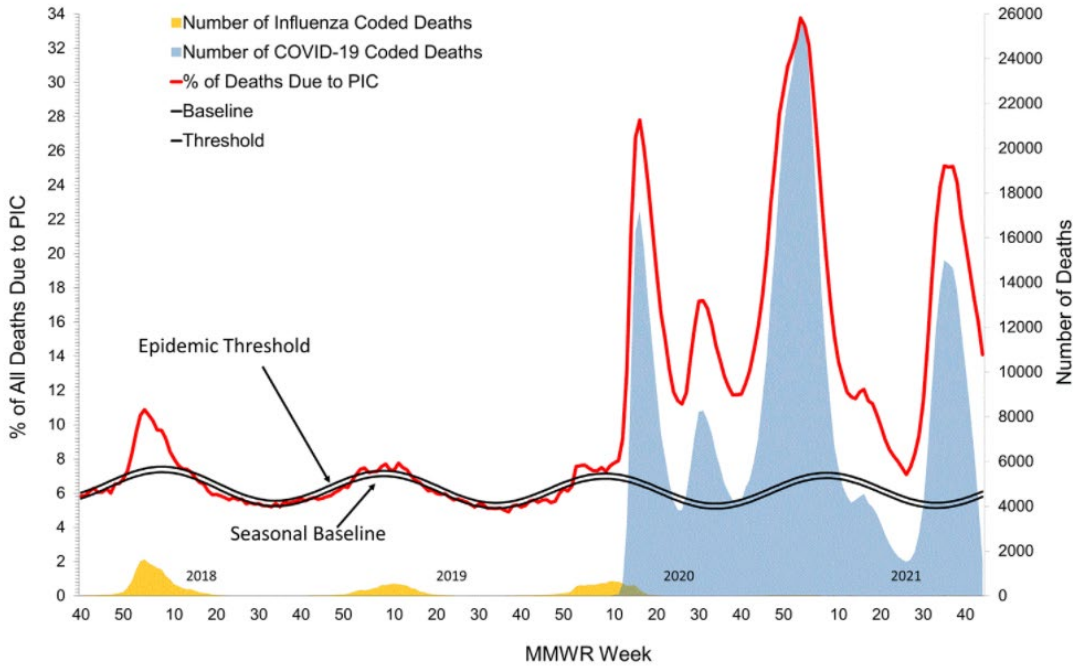
**Figure 8. ESSENCE Syndromic Surveillance for Influenza-like Illness: Denton County, October 01, 2020 – November 06, 2021**

**Daily Data Counts**

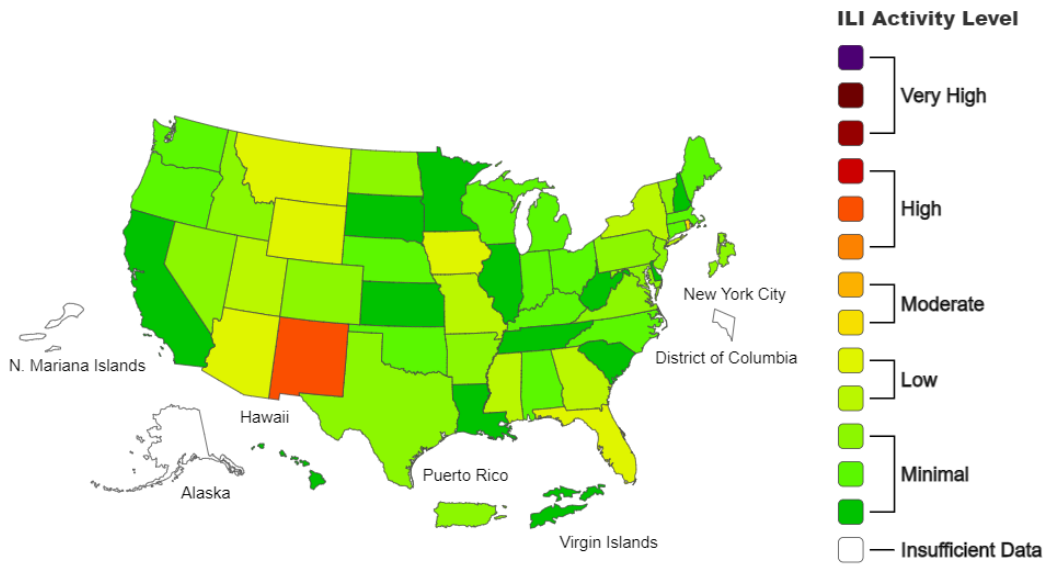


Data obtained from hospitals participating in the Electronic Surveillance System for the Early Notification of Community-based Epidemics (ESSENCE) from October 2020 through the present. Depicted are the numbers of persons presenting to Emergency Departments according to patient location (Denton region) with self-reported chief complaints of influenza-like illness.

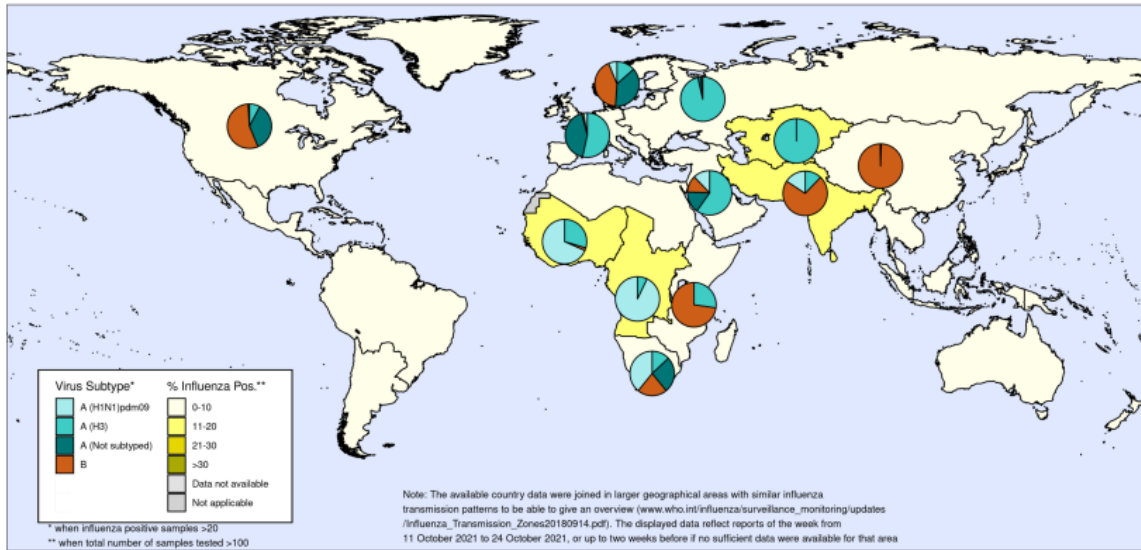
**Figure 9. Pneumonia and Influenza Mortality from the National Center for Health Statistics Mortality Surveillance System: Data as of November 10, 2021**



**Figure 10. 2021-22 Influenza Season Week 44 ending Nov 06, 2021**



**Figure 11. Percentage of Respiratory Specimens that tested Positive for Influenza: WHO, Map generated on November 05, 2021**



Please direct inquiries to Denton County Public Health at [epidemiology@dentoncounty.com](mailto:epidemiology@dentoncounty.com) or 940-349-2909