

Denton County Public Health

2020 – 2021 Influenza Surveillance Program

CDC Week 2, Week Ending January 16, 2021



Epidemiologic Overview

Denton County

- Low influenza activity was reported in Denton County for week 2.
- 1 positive influenza tests (0 Flu A and 1 Flu B) and 0 hospitalization were reported by Denton County sentinel providers for week 2.
- Syndromic surveillance for influenza-like illness (ILI) in Denton County decreased for week 2 when compared to the previous week.
- 0 influenza-associated deaths have been reported in Denton County for the 2020-2021 season.

Texas

- Influenza activity in the state of Texas remains low for week 2.
- The percentage of visits for ILI as reported by ILINet providers decreased to 1.31% in week 2 compared to the previous week.
- The percentage of specimens testing positive for influenza in Texas decreased to 0.51% in week 2 compared to the previous week.

US

- The proportion of outpatient visits for influenza-like illness (ILI) was 1.4% for week 2, which is below the national baseline of 2.6%.
- The percentage of specimens testing positive for influenza in the US was 0.1% for week 2.
- The proportion of deaths attributed to pneumonia, influenza, or COVID-19 (PIC) from the National Center for Health Statistics Mortality Surveillance System for week 2 was 14.7%. This percentage is **above** the epidemic threshold of 7.0% for week 2.

Figure 1. Influenza Surveillance Summary: Denton County Hospitals and Providers

Week Ending	12/5/20	12/12/20	12/19/20	12/26/20	1/02/21	1/09/21	1/16/21	10/24/20-Current
CDC Week	49	50	51	52	53	1	2	
Influenza Tests Performed Weekly	252	219	202	200	228	191	167	2996
Total Positive Influenza Tests	1	7	3	3	2	6	1	49
Percent Positive Influenza Tests*	0.40%	3.2%	1.5%	1.5%	0.88%	3.14%	0.60%	
Positive A Influenza	0	3	1	1	1	3	0	20
Positive B Influenza	1	4	2	2	1	3	1	29
Non-differentiated Influenza	0	0	0	0	0	0	0	0
Influenza Hospitalizations	0	1	0	0	1	0	0	12
Influenza-associated Pediatric Deaths	0	0	0	0	0	0	0	0
Influenza-associated Adult Deaths	0	0	0	0	0	0	0	0

* Percent positive tests only includes positive tests from providers reporting number of tests performed weekly

Figure 2. Influenza Positive Tests and Percent Positive, Denton County Hospitals and Providers, 2020-2021 Season

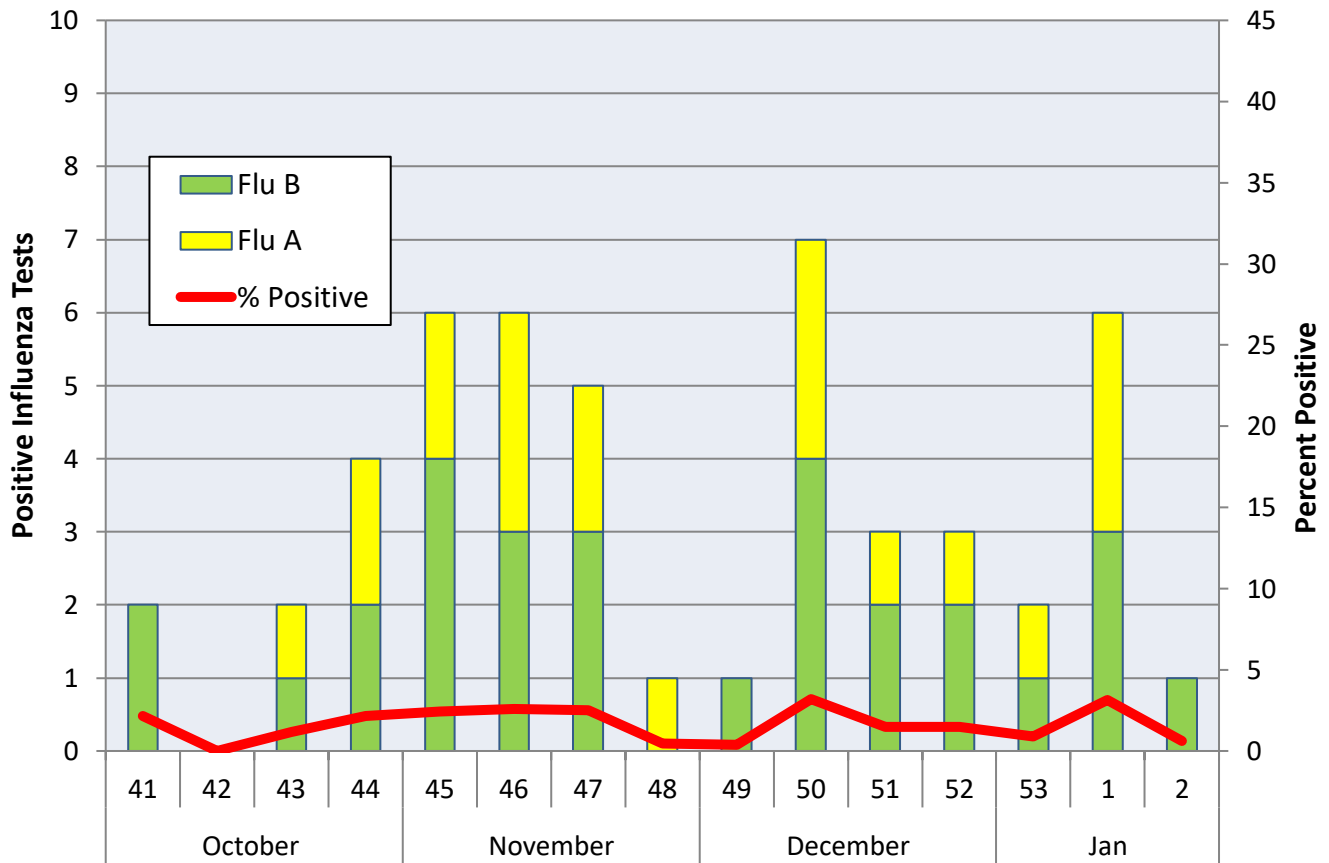


Figure 3. Seasonal Comparison of Influenza Percent Positive, Denton County, 2018 - 2021

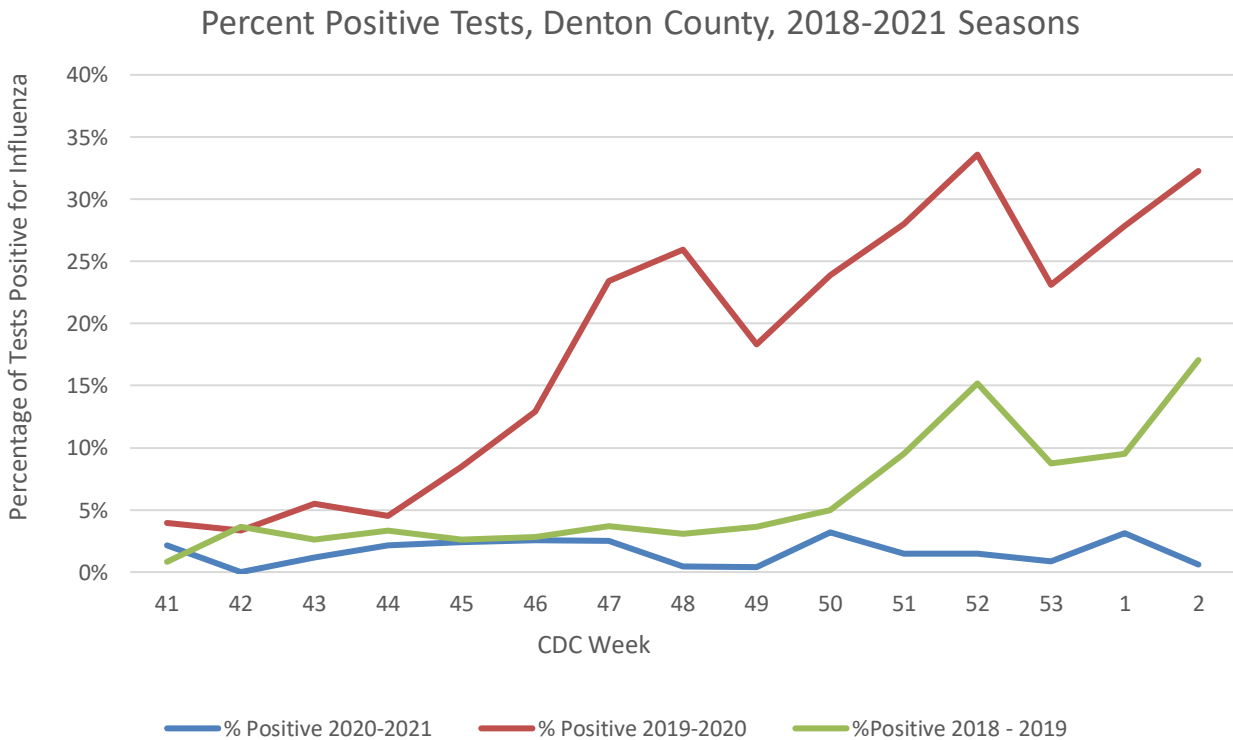


Figure 4. ESSENCE Syndromic Surveillance for Influenza-like Illness: Denton County, August 1, 2020- January 16, 2021

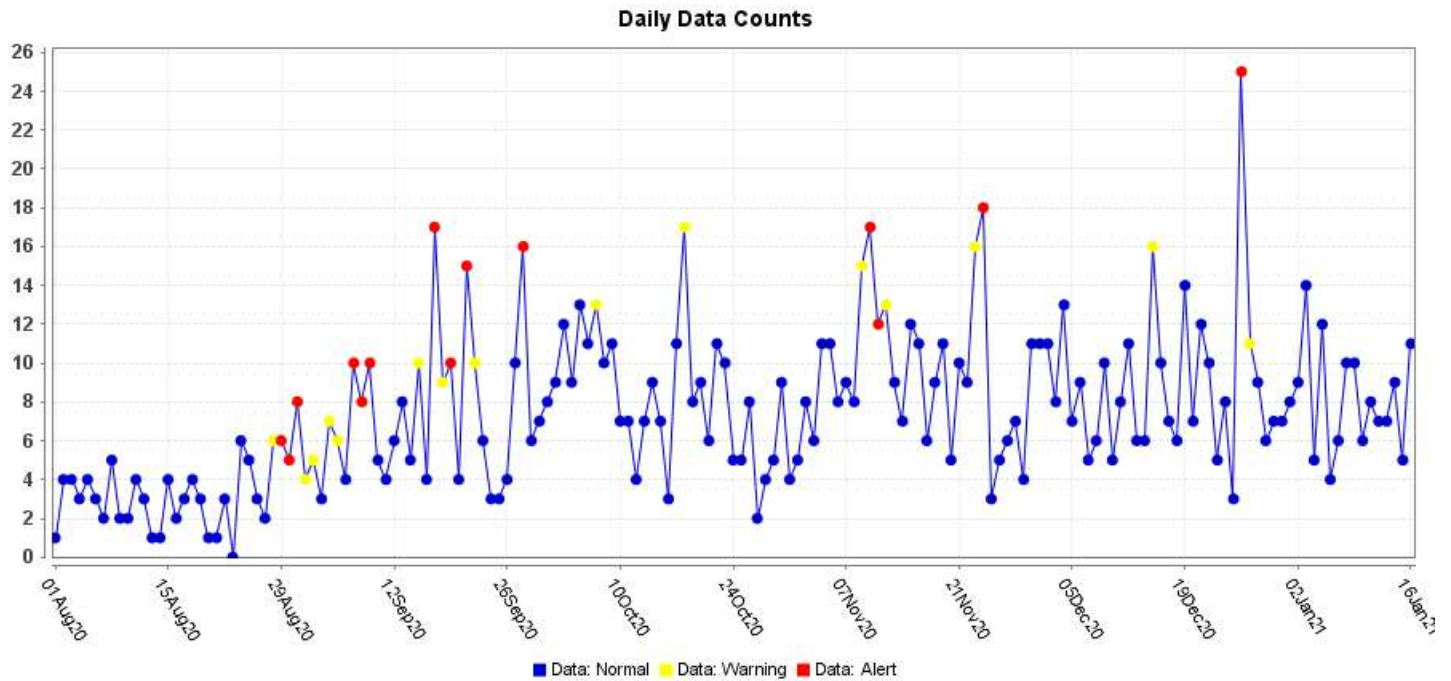
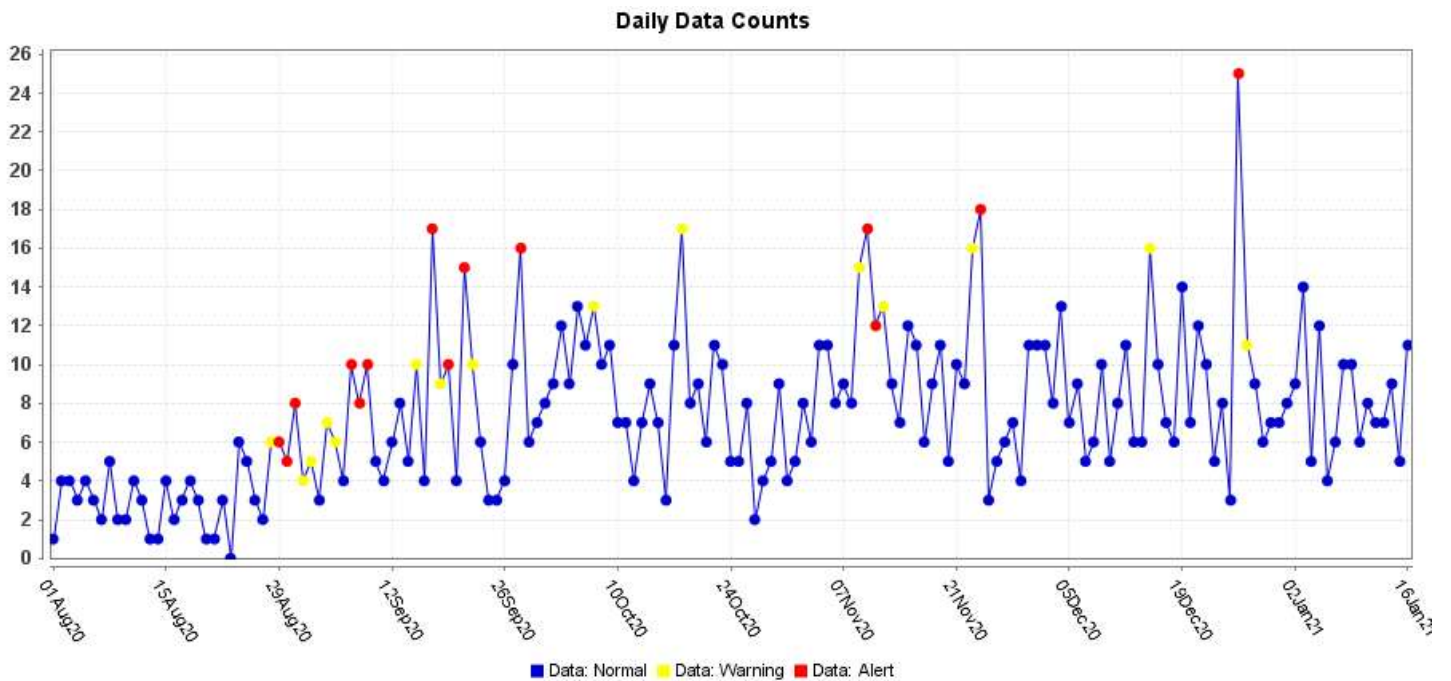


Figure 5. ESSENCE Syndromic Surveillance for Influenza-like Illness: Denton County, October 1, 2019 – January 16, 2021



Data obtained from hospitals participating in the Electronic Surveillance System for the Early Notification of Community-based Epidemics (ESSENCE) from October 2019 through the present. Depicted are the numbers of persons presenting to Emergency Departments according to patient location (Denton region) with self-reported chief complaints of influenza-like illness.

Figure 6. Influenza Positive Tests Reported to CDC by U.S. Public Health Laboratories, National Summary, Sept. 27, 2020 – Jan. 16, 2021

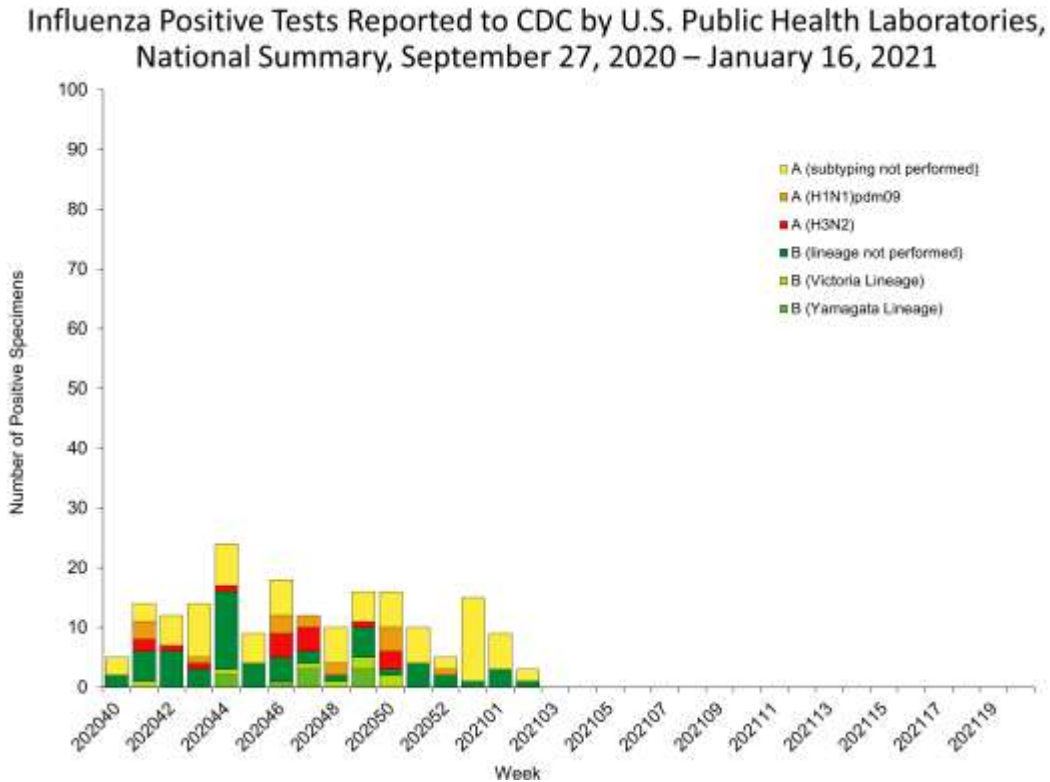


Figure 7. Influenza Positive Tests Reported to CDC by U.S. Clinical Laboratories, National Summary, Sept. 27, 2020 – Jan. 16, 2021

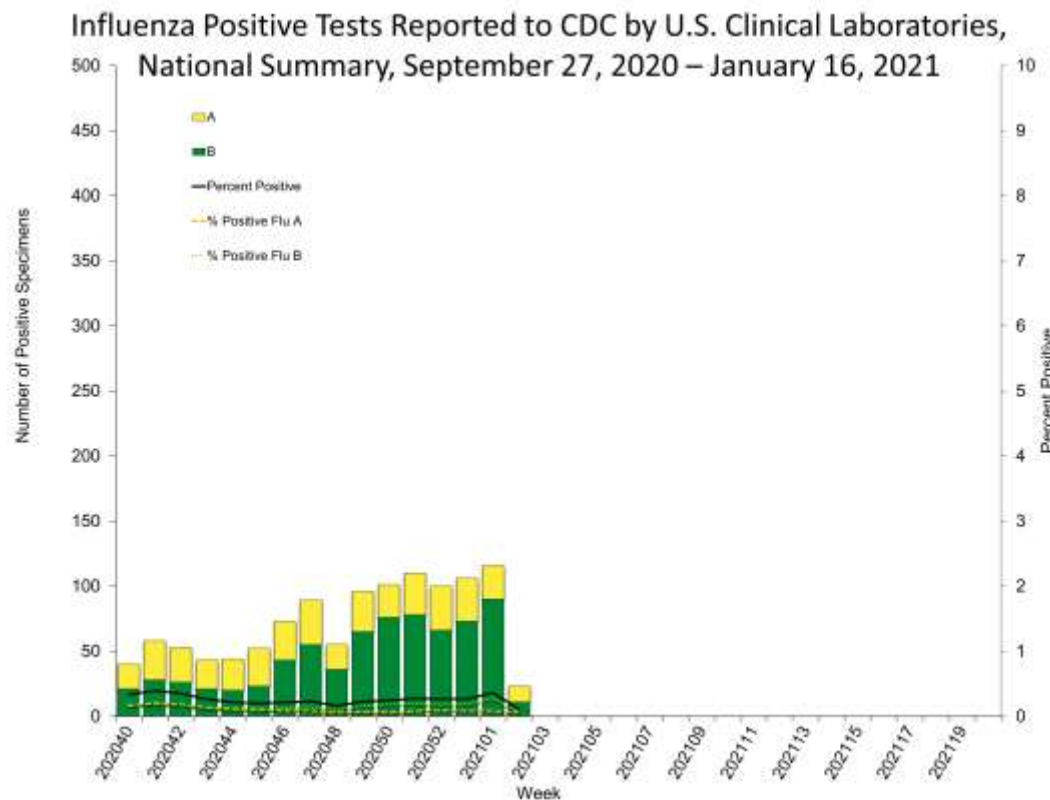


Figure 8. 2020-2021 Influenza Vaccine Composition, Northern Hemisphere:

Trivalent (three-component) Vaccine:

- A/Guangdong-Maonan/SWL1536/2019 (H1N1)pdm09-like virus (updated)
- A/Hong Kong/2671/2019 (H3N2)-like virus (updated)
- B/Washington/02/2019 (B/Victoria lineage)-like virus (updated)

Quadrivalent (four-component) Vaccine:

- All components of trivalent vaccine plus...
- B/ Phuket/3073/2013-like (Yamagata lineage)

Figure 9. U.S. Virologic Surveillance, Week 2

	Week 2	Data Cumulative since September 27, 2020 (Week 40)
No. of specimens tested	21,244	468,064
No. of positive specimens (%)	23 (0.1%)	1,159 (0.2%)
<i>Positive specimens by type</i>		
Influenza A	12 (52.2%)	427 (36.8%)
Influenza B	11 (47.8%)	732 (63.2%)

Figure 10. Pneumonia and Influenza Mortality from the National Center for Health Statistics Mortality Surveillance System: Week ending Jan. 16, 2021

Pneumonia, Influenza, and COVID-19 Mortality from the National Center for Health Statistics Mortality Surveillance System
Data through the week ending January 16, 2021, as of January 21, 2021

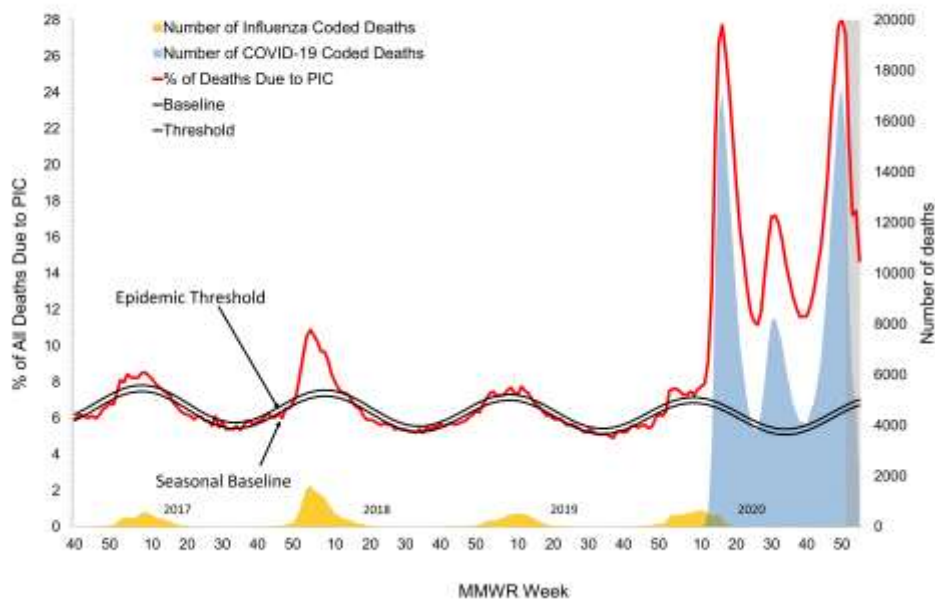


Figure 11. Weekly Influenza Activity Estimates Reported by State and Territorial Epidemiologists: Week 2 – Week Ending Jan. 16, 2021

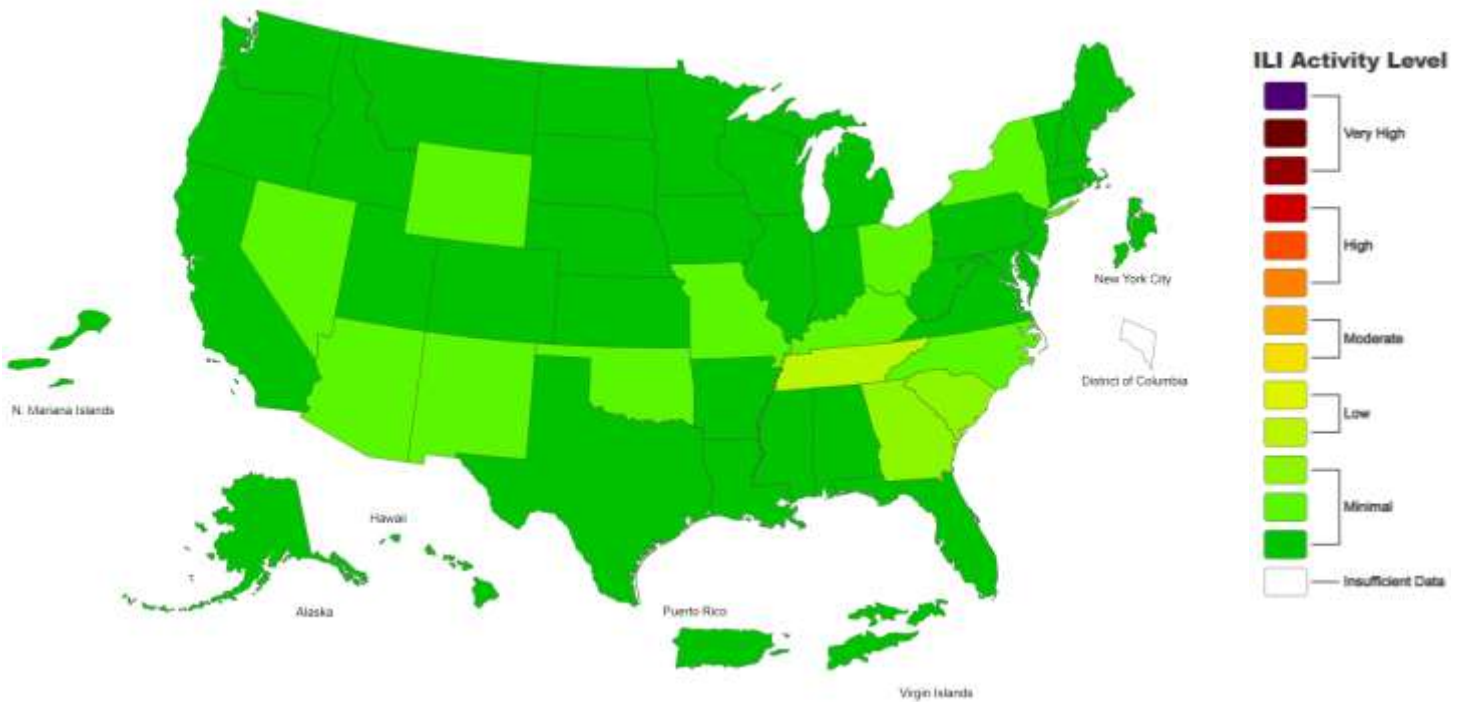
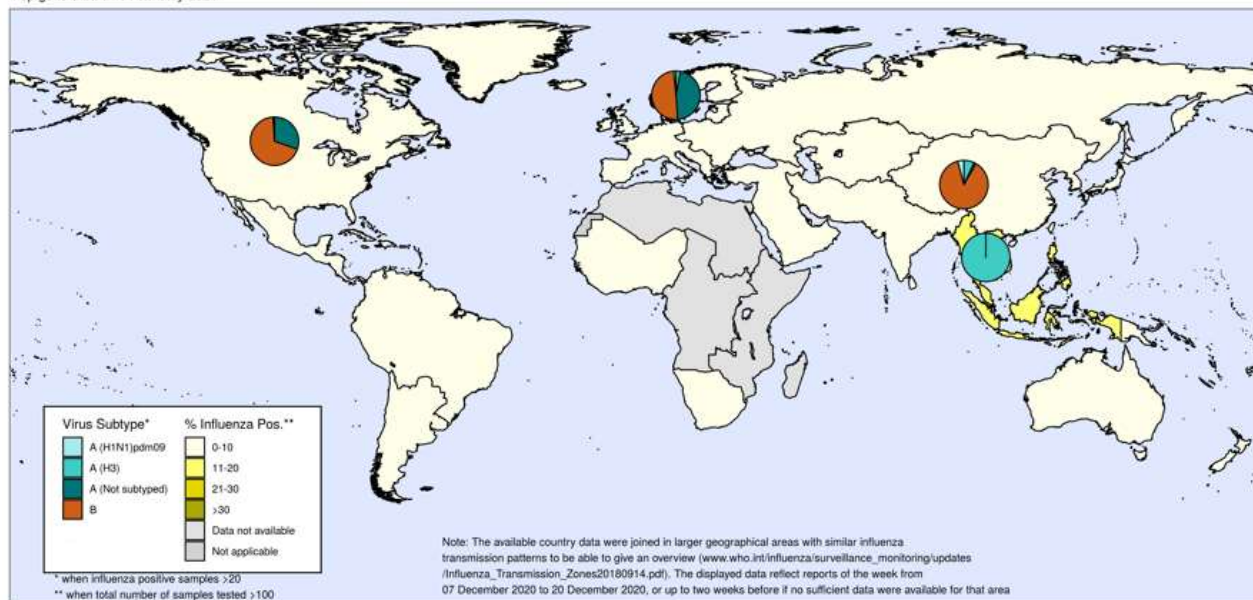


Figure 12. Percentage of Respiratory Specimens that tested Positive for Influenza: WHO, based on data through December 20, 2020

Percentage of respiratory specimens that tested positive for influenza
By influenza transmission zone
Map generated on 04 January 2021



The boundaries and names shown and the designations used on this map do not imply the expression of any opinion whatsoever on the part of the World Health Organization concerning the legal status of any country, territory, city or area or of its authorities, or concerning the delimitation of its frontiers or boundaries. Dotted and dashed lines on maps represent approximate border lines for which there may not yet be full agreement.



Data source: Global Influenza Surveillance and Response System (GISRS), FluNet (www.who.int/flu-net)
Copyright WHO 2021. All rights reserved.



Please send inquiries to Abigail Shulman, MPH – Epidemiologist
Denton County Public Health at Abigail.Shulman@dentoncounty.gov