

Denton County Public Health

2020 – 2021 Influenza Surveillance Program

CDC Week 41, Week Ending October 10, 2020



Epidemiologic Overview

Denton County

- Low influenza activity was reported in Denton County for week 41.
- 2 positive influenza tests (0 Flu A and 2 Flu B) and 0 hospitalizations were reported by Denton County sentinel providers for week 41.
- 0 influenza-associated adult deaths have been reported in Denton County for the 2020-2021 season.

Texas

- Influenza activity in the state of Texas remains low for week 41.
- The percentage of visits for ILI as reported by ILINet providers increased to 1.39% in week 41 compared to the previous week.
- The percentage of specimens testing positive for influenza in Texas decreased to 1.00% in week 41 compared to the previous week.

US

- The proportion of outpatient visits for influenza-like illness (ILI) was 1.2%, which is below the national baseline of 2.6%.
- The percentage of specimens testing positive for influenza in the US was 0.27%.
- The proportion of deaths attributed to pneumonia, influenza, or COVID-19 (PIC) from the National Center for Health Statistics Mortality Surveillance System for week 41 was 7.2%. This percentage is **above** the epidemic threshold of 5.7% for week 41.

Figure 1. Influenza Surveillance Summary: Denton County Hospitals and Providers

Week Ending	10/4/2020
CDC Week	41
Influenza Tests Performed Weekly	92
Total Positive Influenza Tests	2
Percent Positive Influenza Tests*	2.2%
Positive A Influenza	0
Positive B Influenza	2
Non-differentiated Influenza	0
Influenza Hospitalizations	0
Influenza-associated Pediatric Deaths	0
Influenza-associated Adult Deaths	0

* Percent positive tests only includes positive tests from providers reporting number of tests performed weekly

Figure 2. Influenza Positive Tests and Percent Positive, Denton County Hospitals and Providers, 2020-2021 Season

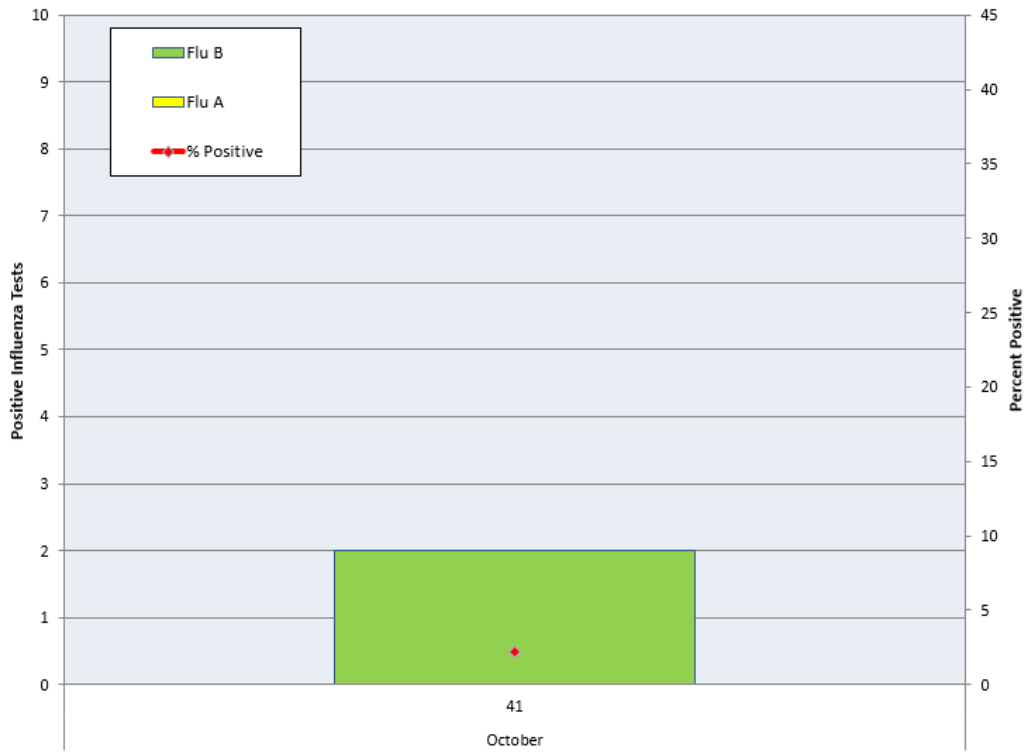


Figure 3. Influenza Positive Tests Reported to CDC by U.S. Public Health Laboratories, National Summary, September 29, 2019 – October 10, 2020

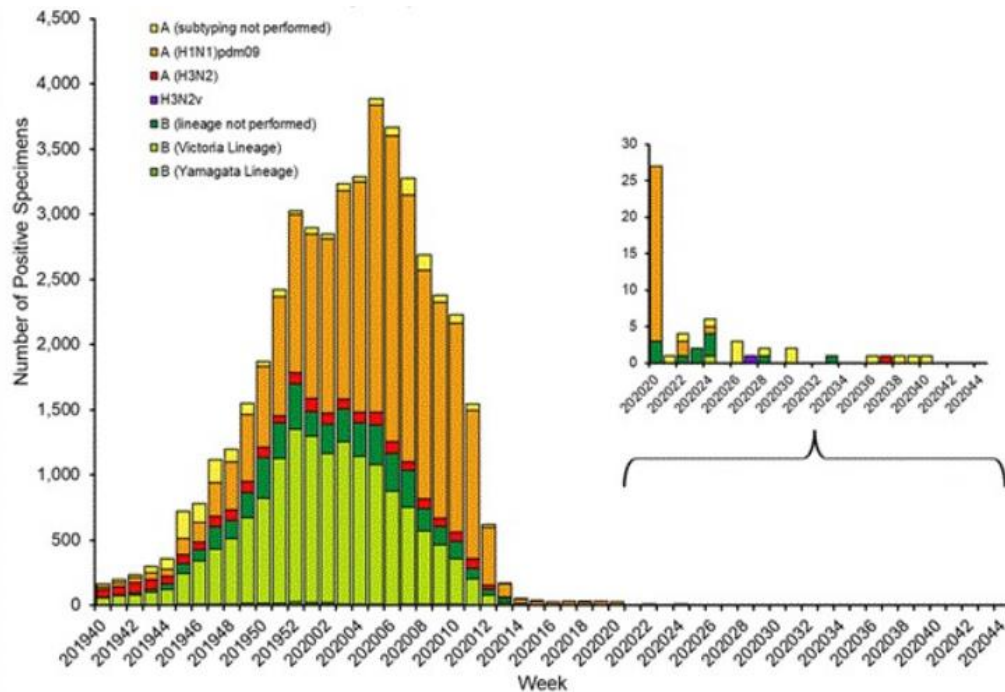


Figure 4. Influenza Positive Tests Reported to CDC by U.S. Clinical Laboratories, National Summary, Sept. 29, 2019 – October 10, 2020

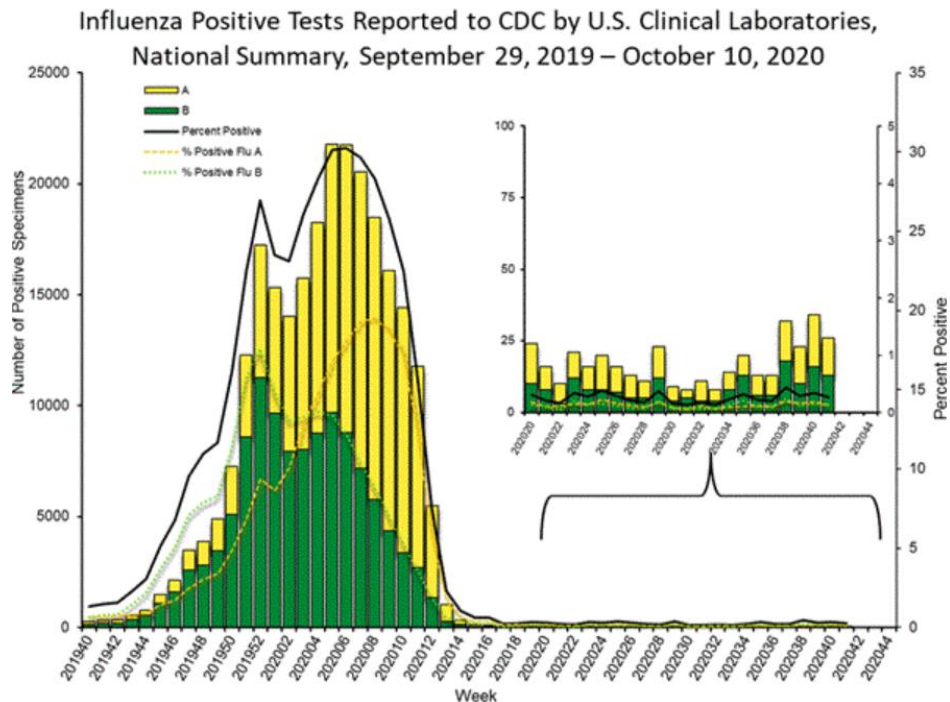


Figure 5. 2019-2020 Influenza Vaccine Composition, Northern Hemisphere:

Trivalent (three-component) Vaccine:

- A/Guangdong-Maonan/SWL1536/2019 (H1N1)pdm09-like virus (updated)
- A/Hong Kong/2671/2019 (H3N2)-like virus (updated)
- B/Washington/02/2019 (B/Victoria lineage)-like virus (updated)

Quadrivalent (four-component) Vaccine:

- All components of trivalent vaccine plus...
- B/ Phuket/3073/2013-like (Yamagata lineage)

Figure 6. U.S. Virologic Surveillance, Week 41

	Week 41	Data Cumulative since September 27, 2020 (Week 40)
No. of specimens tested	9,727	19,768
No. of positive specimens (%)	26 (0.27%)	60 (0.30%)
<i>Positive specimens by type</i>		
Influenza A	13 (50.0%)	31 (51.7%)
Influenza B	13 (50.0%)	29 (48.3%)

Figure 7. ESSENCE Syndromic Surveillance for Influenza-like Illness: Denton County, August 1, 2020- October 10, 2020

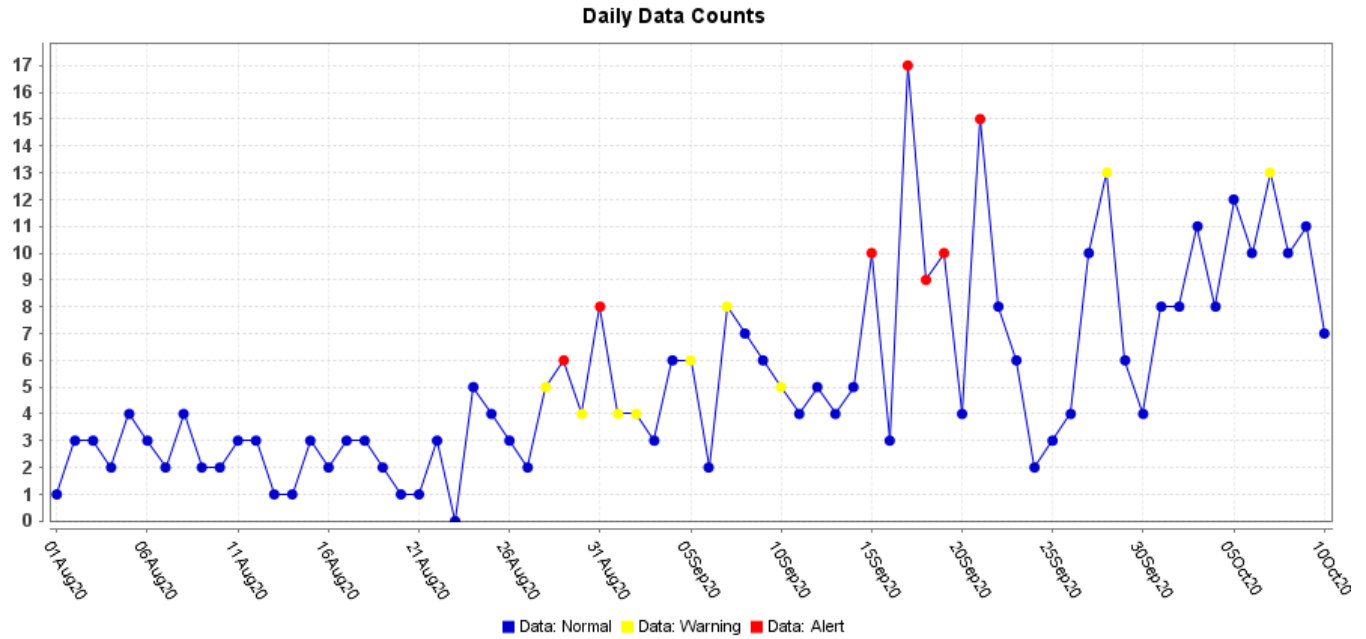
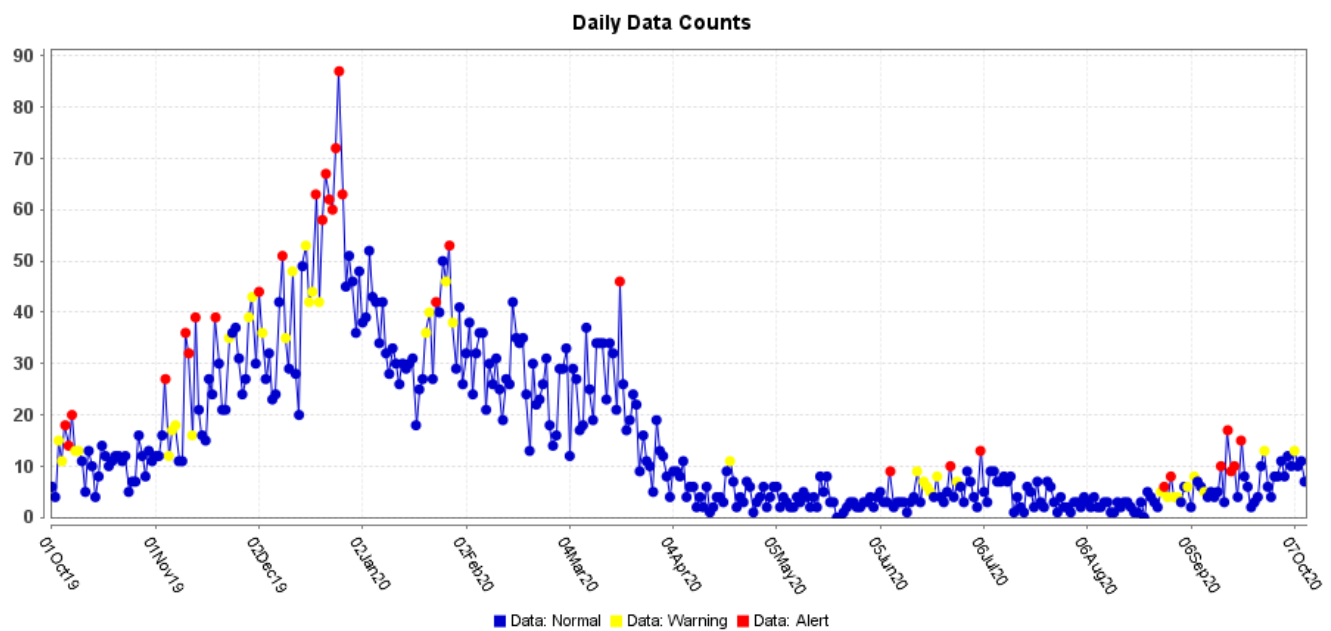


Figure 8. ESSENCE Syndromic Surveillance for Influenza-like Illness: Denton County, October 1, 2019 – October 10, 2020



Data obtained from hospitals participating in the Electronic Surveillance System for the Early Notification of Community-based Epidemics (ESSENCE) from October 2019 through the present. Depicted are the numbers of persons presenting to Emergency Departments according to patient location (Denton region) with self-reported chief complaints of influenza-like illness.

Figure 9. Pneumonia and Influenza Mortality from the National Center for Health Statistics Mortality Surveillance System: Week ending October 10, 2020

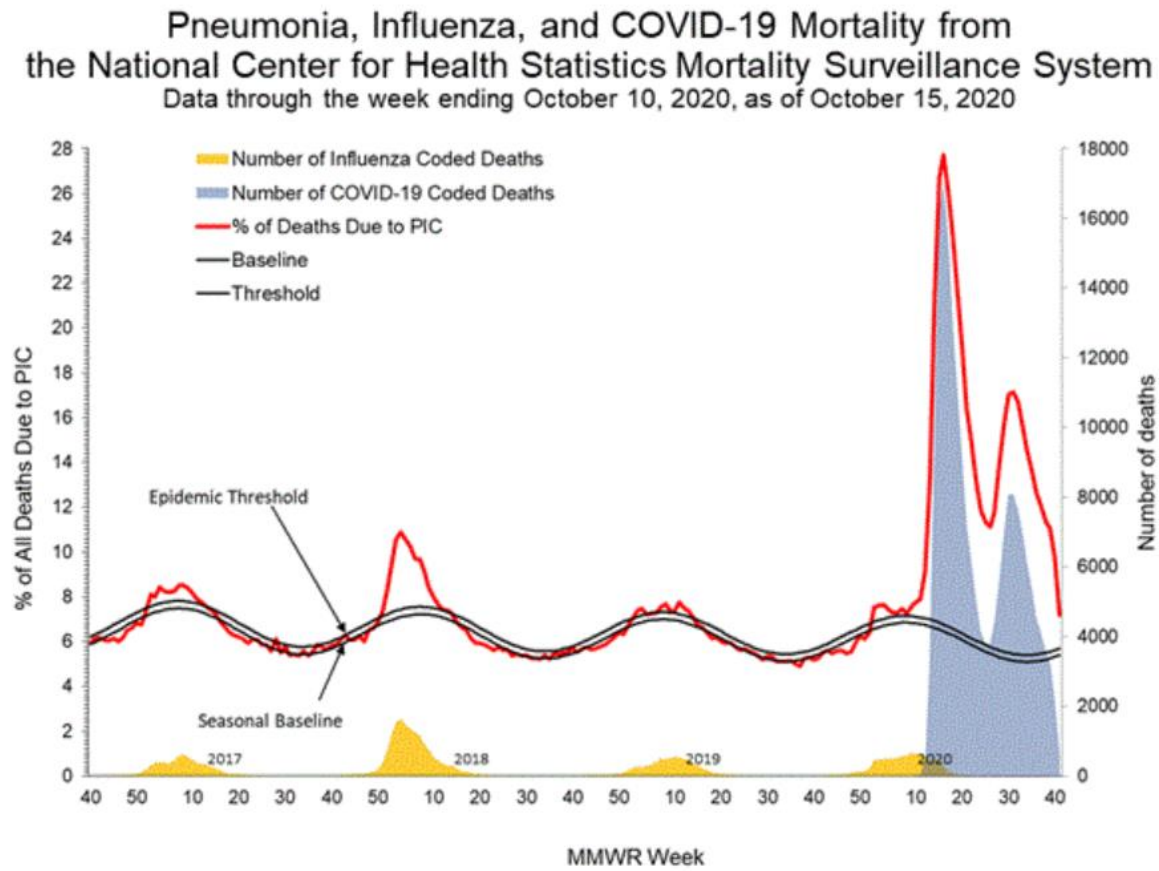


Figure 10. Weekly Influenza Activity Estimates Reported by State and Territorial Epidemiologists: Week 1 - Week Ending October 10, 2020

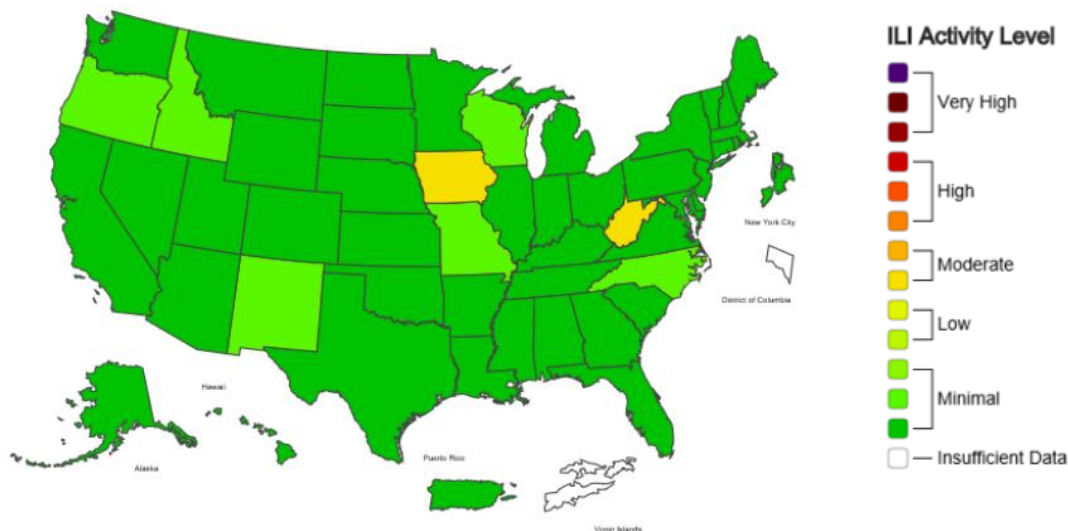
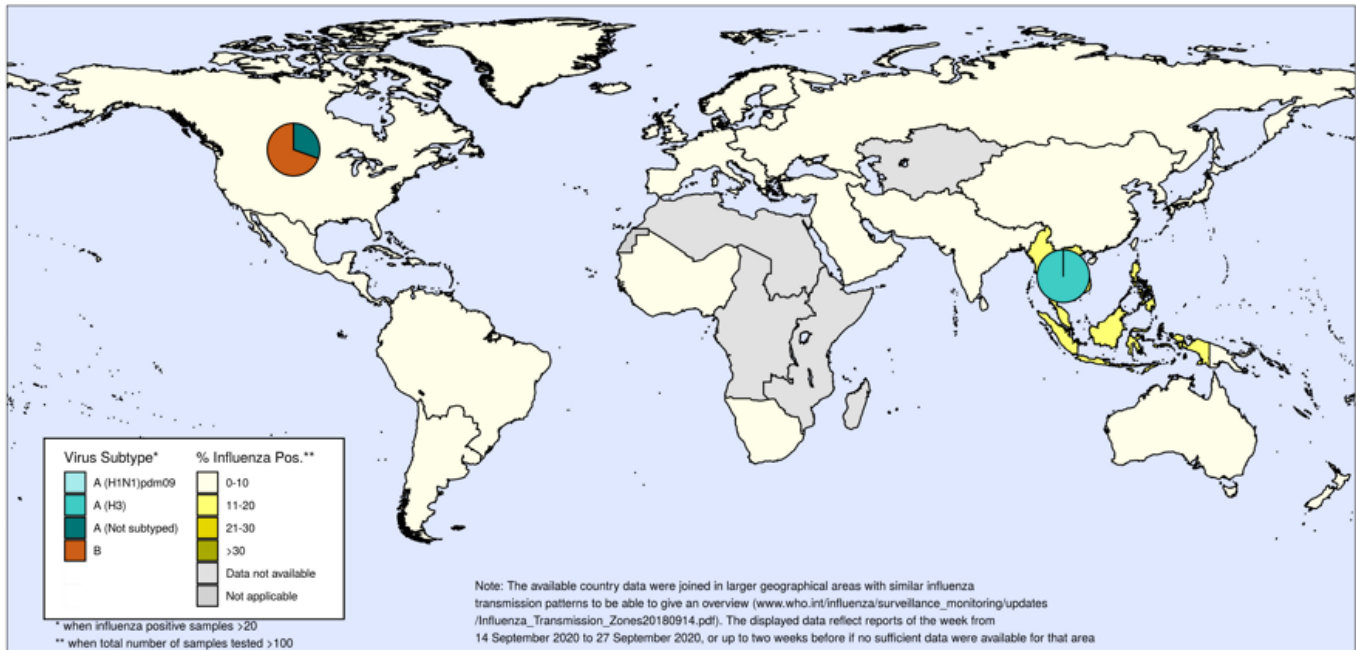


Figure 11. Percentage of Respiratory Specimens that tested Positive for Influenza: WHO, based on data through September 27, 2020



The boundaries and names shown and the designations used on this map do not imply the expression of any opinion whatsoever on the part of the World Health Organization concerning the legal status of any country, territory, city or area or of its authorities, or concerning the delimitation of its frontiers or boundaries. Dotted and dashed lines on maps represent approximate border lines for which there may not yet be full agreement.

Data source: Global Influenza Surveillance and Response System (GISRS), FluNet (www.who.int/flu-net)
 Copyright WHO 2020. All rights reserved.



Please send inquiries to Abigail Shulman, MPH – Epidemiologist
 Denton County Public Health at Abigail.Shulman@dentoncounty.com